

# 2780 COMMERCE DRIVE

MIDDLETOWN, PA 17057



**FOR LEASE**

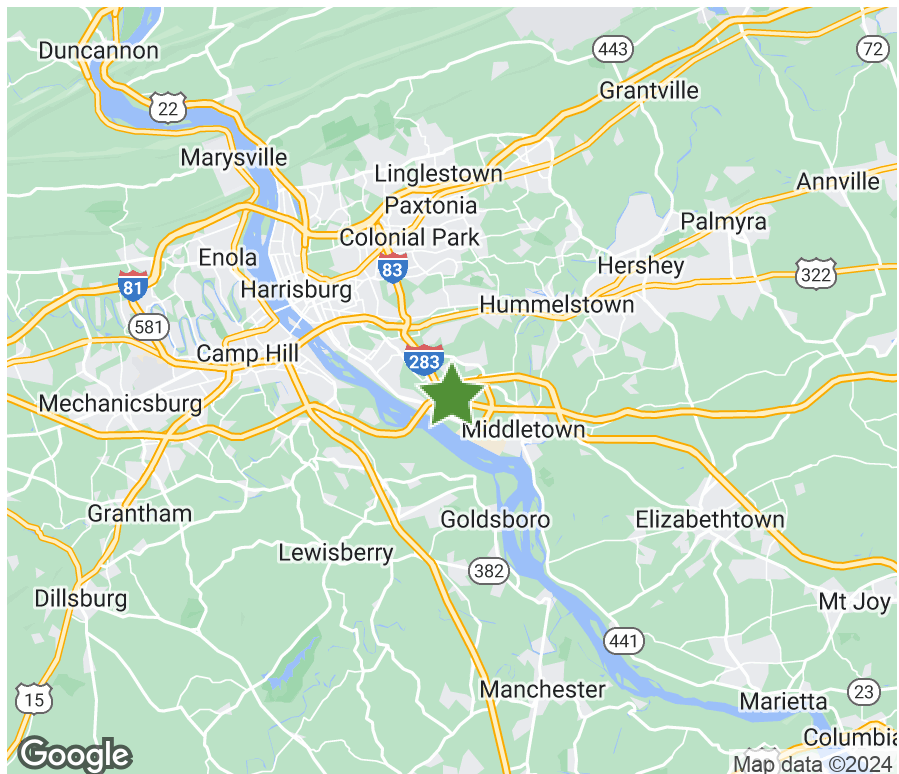
2780 Commerce Drive is well located within the Turnpike Industrial Park, approximately 2 miles from Interstate 283 and the Pennsylvania Turnpike, providing easy access to Interstate 83, Interstate 81 and the Harrisburg International Airport.

## PROPERTY SPECIFICATIONS

Total Building Size:	21,600 SF
Total Available Space:	12,142 SF
	2,092 SF
Warehouse Space:	10,050 SF
Clear Height:	18'
Dock Doors:	3
Drive-Ins	2
Column Spacing::	40' x 40'
Warehouse Lighting:	T-5 Fixtures

## PROPERTY HIGHLIGHTS

- Clean, professional flex/warehouse space
- Great location; many major east coast ports and airports within a half day's drive



# 2780 COMMERCE DRIVE

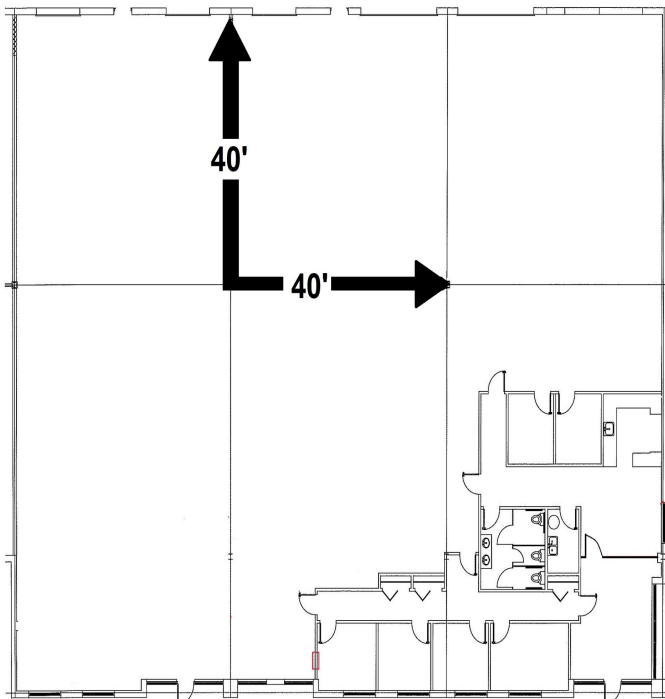
| FOR LEASE



**AVAILABLE**

**12,142 SF**

## FLOOR PLAN



## OWNER CONTACT

**Joe Nassib**

Marketing/Leasing Manager

610.322.5711

[jnassib@firstindustrial.com](mailto:jnassib@firstindustrial.com)



2780 Commerce Drive, Suite 100

Middletown, PA 17057

717.657.0372

All information furnished regarding the property for sale, rental or financing is obtained from sources deemed reliable. No representation is made to the accuracy thereof and is submitted subject to errors, omissions, change of price rental or other conditions, prior sale, lease, or financing, or withdrawal without notice. First Industrial Realty Trust, Inc. represents the Seller in this transaction and as such owes all duties and obligations thereto.