



Shops available at Fry's- anchored shopping center



Join Fry's Food Stores, UFC Gym fitness,
and The Melting Pot



Less than 2-miles from I-10 Fwy & Ray Rd
interchange



One of Metro Phoenix's strongest
submarkets



Ideal area demographics and traffic counts

Get more information

Matt Milinovich

D 480 423 7959

C 602 885 9393

matt.milinovich@avisonyoung.com

James DeCremer

D 480 423 7958

C 602 909 0957

james.decremer@avisonyoung.com

Alec Miller

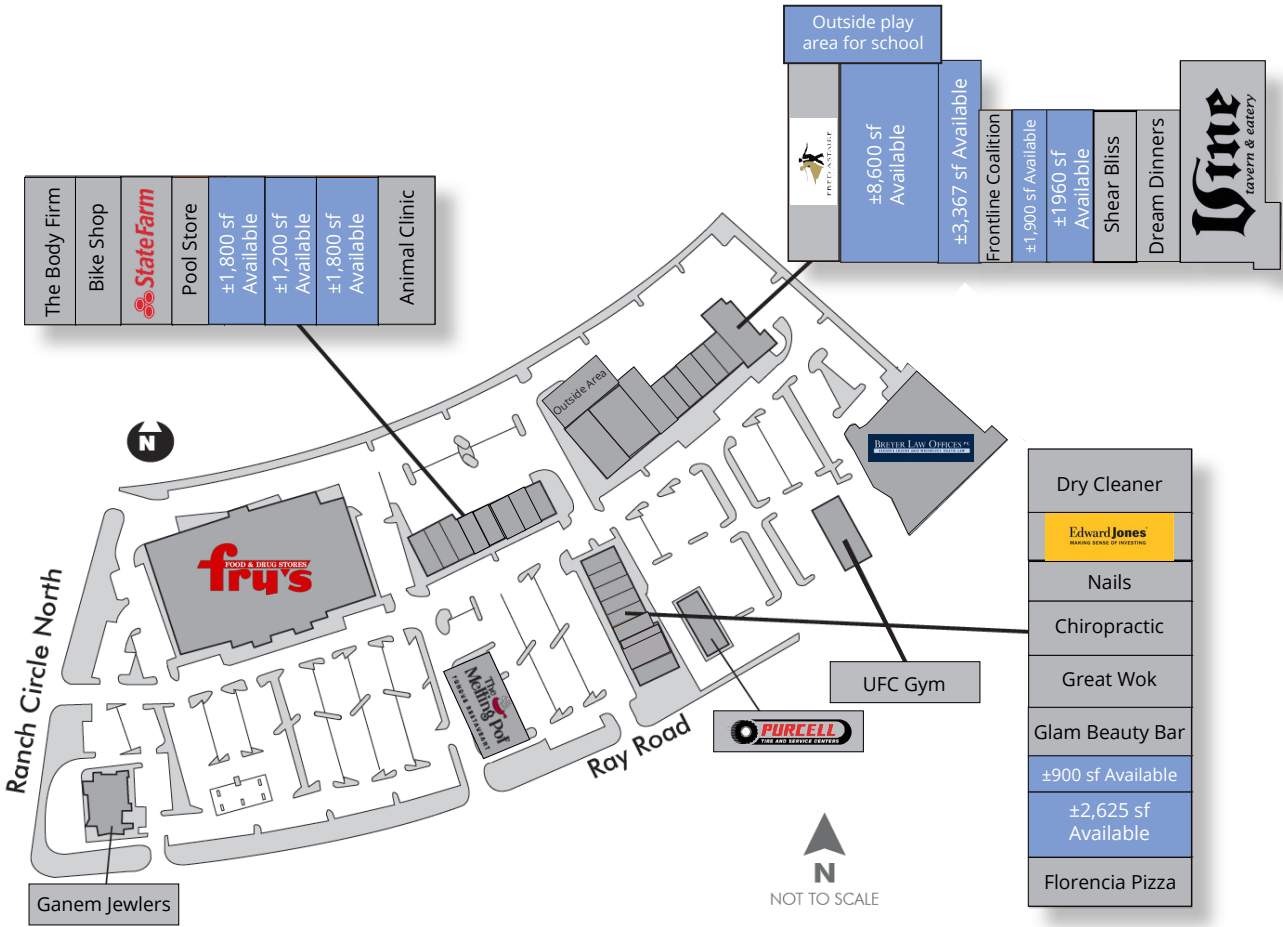
D 480 423 7955

C 480 531 0369

alec.miller@avisonyoung.com

Site plan & availability

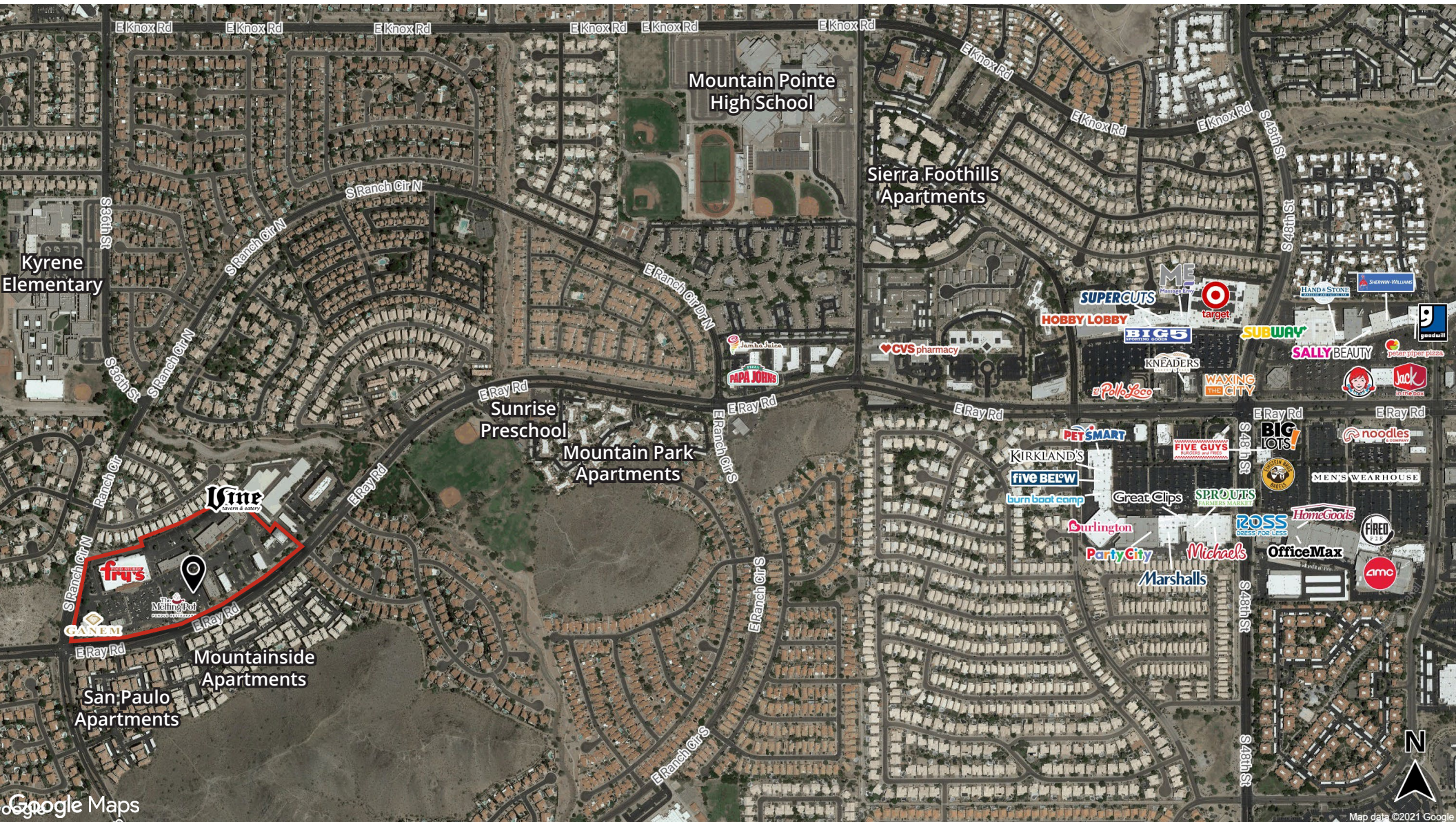
Shop space available NEC Ray Road & Ranch Circle North




Availability	Size
Available	1,800 sf
Available - former insurance office	1,200 sf
Available - former jewelry store	1,800 sf
Available - former school	8,600 sf
Available - former day spa	3,367 sf
Available	1,900 sf
Available - former yoga studio	1,960 sf
Available	900 sf
Available - former dance studio	2,625 sf


Trade area


Shop space available
NEC Ray Road & Ranch Circle North





Demographics

	1-mile	3-miles	5-miles
Population	15,144	70,899	156,729


	1-mile	3-miles	5-miles
Median age	38.3	38.9	37.5

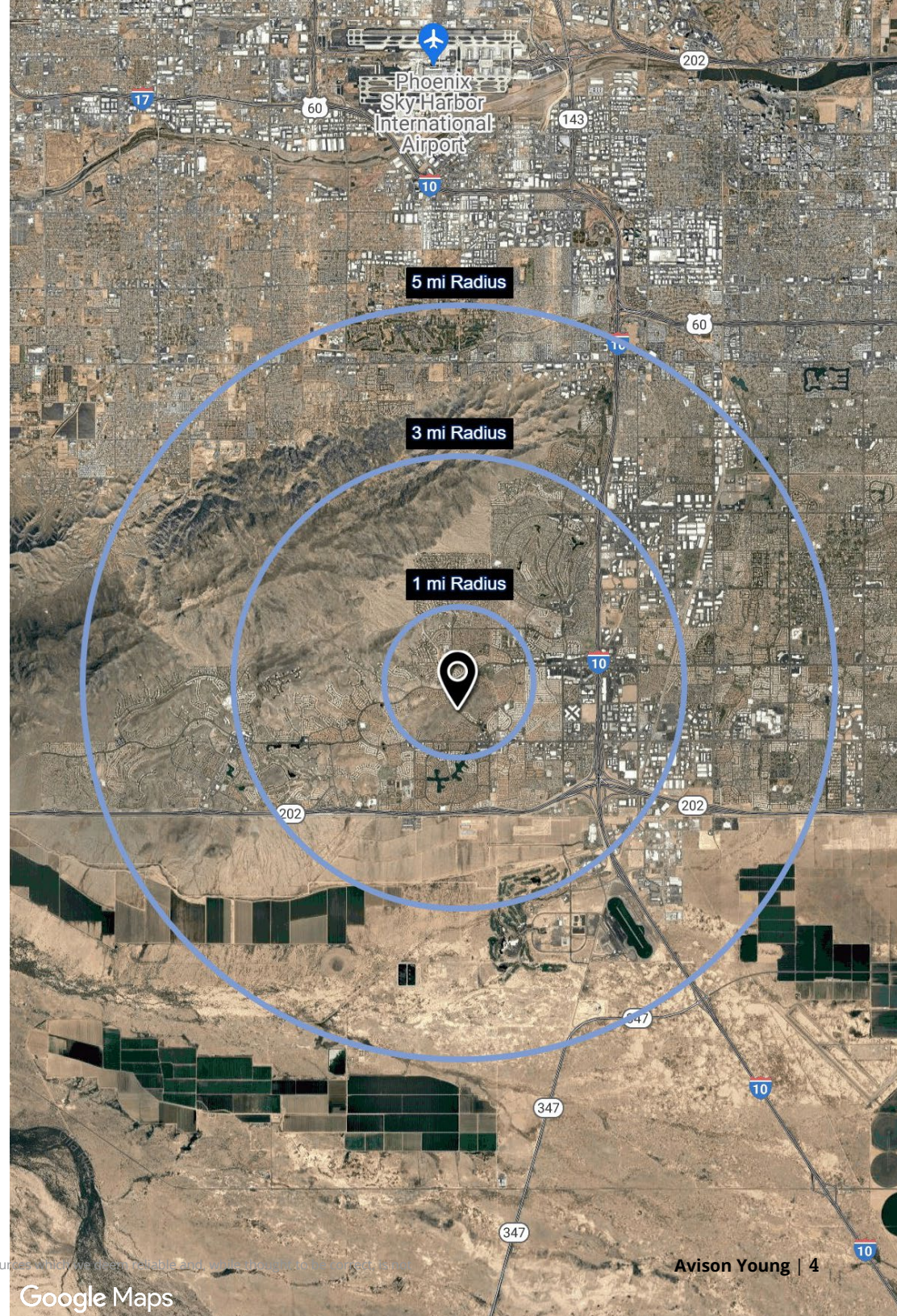
	1-mile	3-miles	5-miles
Daytime employment	3,183	35,370	82,277

	1-mile	3-miles	5-miles
Avg. HH income	\$115,089	\$116,261	\$115,254

	1-mile	3-miles	5-miles
HH units	6,178	29,896	64,271

Traffic counts

	Ranch Circle North	±30,338 cpd
	Ray Road	±59,300 cpd





Visit us online
avisonyoung.com

© 2022 Avison Young - Arizona, Ltd. All rights reserved.

E. & O.E.: The information contained herein was obtained from sources which we deem reliable and, while thought to be correct, is not guaranteed by Avison Young.

2720 E Camelback Road | Suite 150 | Phoenix, AZ 85016 | 480 994 8155

**AVISON
YOUNG**