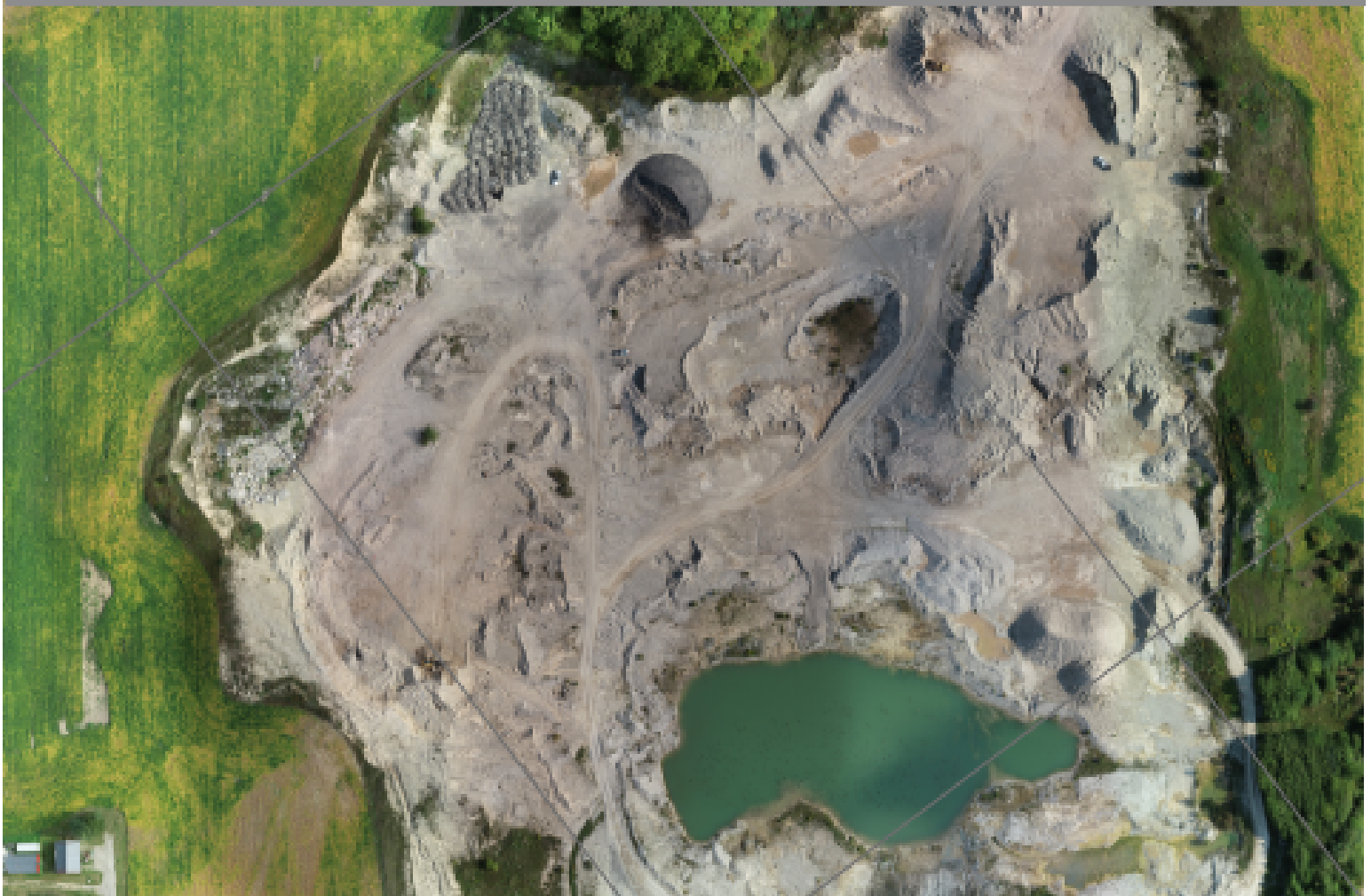


For Sale

Sand and Gravel Pit #4680

168 Bruce Road 3, Mildmay, Bruce County



Details

- Asking price: \$2,500,000.00
- 85.53 AC
- [CLICK](#): SITE PLAN 35 AC licensed -300,000 T
- 50 AC Agricultural - Leased
- Including License (Class A)
- Compliance report from June 2022: [CLICK HERE](#)
- Located along Bruce County Rd 3 and 9
- Drone Volume Report Available: [CLICK HERE](#)
- 10M below water extraction permitted
- [CLICK](#): For Aggregate Pits of Bruce County



Offering includes land and permits



Stock Piles & Reserves



Loader and Scale House


For Sale

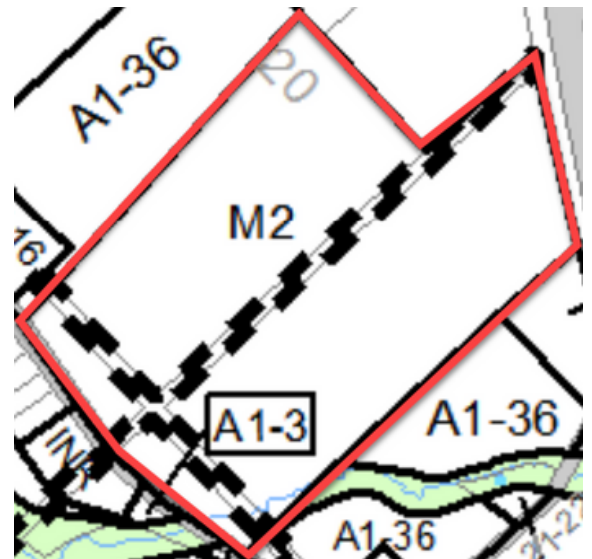
Sand and Gravel Pit #4680

168 Bruce Road 3, Mildmay, Bruce County

Property information



- Estimated 3,722,432 Metric tonnes
- See Volume Report: [CLICK](#) 
- Maximum annual tonnage: 300,000 metric tonnes
- 10M below water extraction permitted
- 5 monitoring wells onsite
- Site to be rehabilitated to recreational and natural habitat after use
- Rehabilitated slopes 3:1 with .15 meters of topsoil
- Shoreline zones shall be irregular, with random boulders above and below water to enhance shoreline diversity

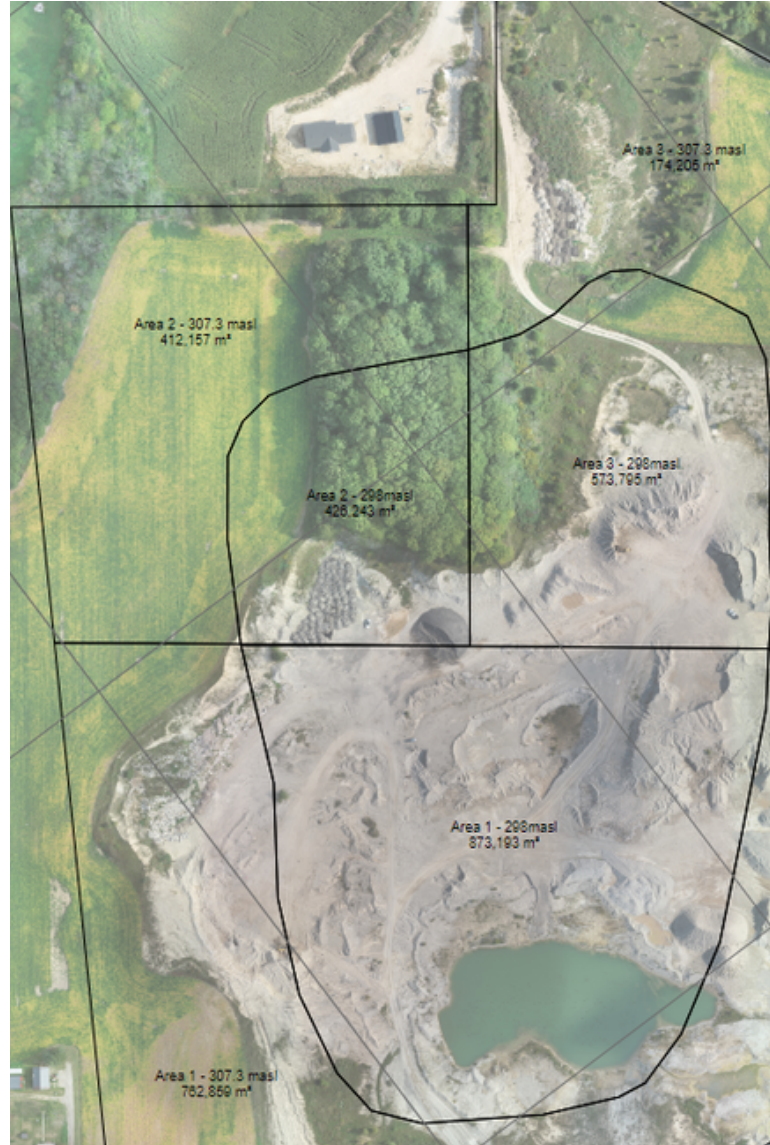
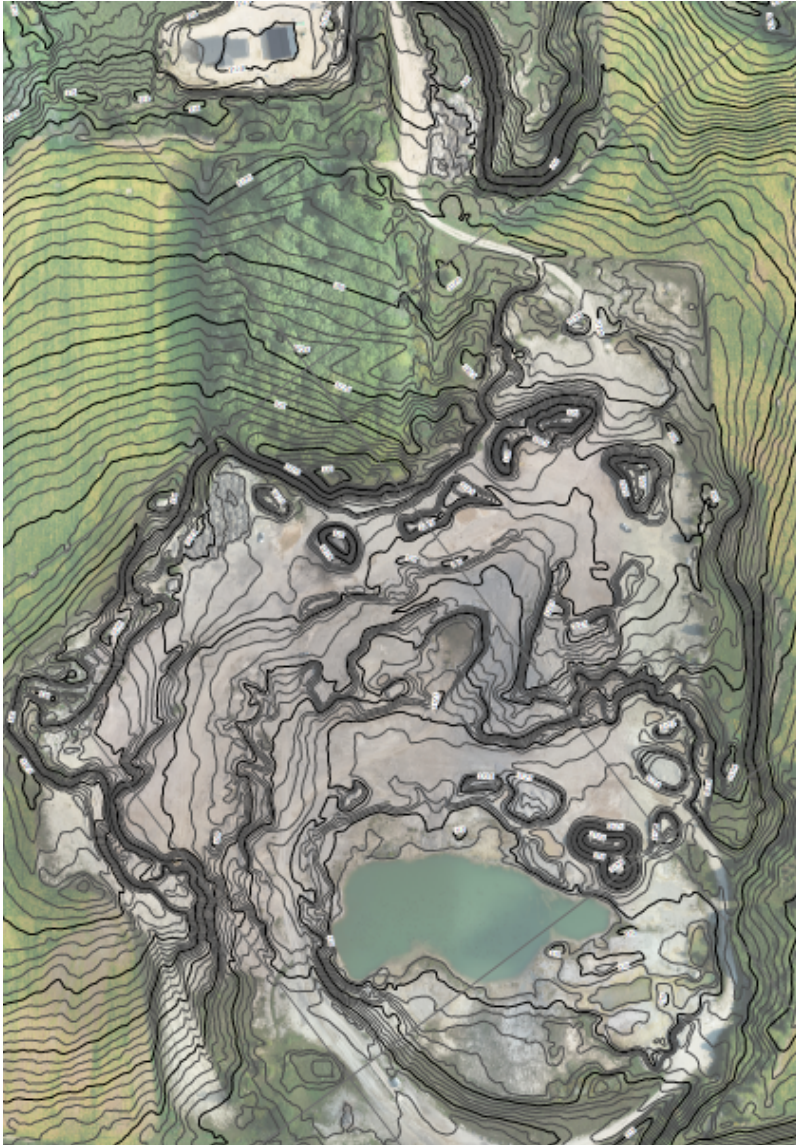


For Sale

Sand and Gravel Pit #4680

168 Bruce Road 3, Mildmay, Bruce County

Volume Calculation and Topography



For more information about the offering [CLICK](#) for additional documents.



For Sale

Sand and Gravel Pit #4680

168 Bruce Road 3, Mildmay, Bruce County

Zoning

Zoning: M2

CLICK: For South Bruce zoning map



SQUAREFOOT COMMERCIAL GROUP



LINDA LOFTUS

Broker
CCIM SIOR CIPS MRICS FEA
linda@squarefoot.ca



SHANNON MACINTYRE

Broker
CCIM SIOR
shannon@squarefoot.ca



ASHLEY POLISCHUIK

Broker
B.Comm CCIM
ashley@squarefoot.ca



BETH LAMBERT

Sales Representative
beth@squarefoot.ca



LAUREN MCNAIR

Sales Representative
B.A.
lauren@squarefoot.ca

Social Media Links



FACEBOOK



INSTAGRAM



YOUTUBE



80 Maple Avenue

Barrie, ON L4N 1R8

Direct: 705-735-2246

Office: 705-739-1300

hello@squarefoot.ca

www.squarefoot.ca



Sutton Group Incentive Realty Inc. Brokerage*

Buyers, Tenants, Sales Representatives and Brokers are encouraged to verify all details, sizes, measurements, etc. and obtain necessary legal and accounting advice.

Sutton Group Incentive Realty Inc. Brokerage has used information believed to be accurate and true and as supplied from reliable sources.

*Sutton Group Incentive Realty Inc. Brokerage is Independently Owned & Operated. This communication and illustration is not intended to solicit those already under contract.

