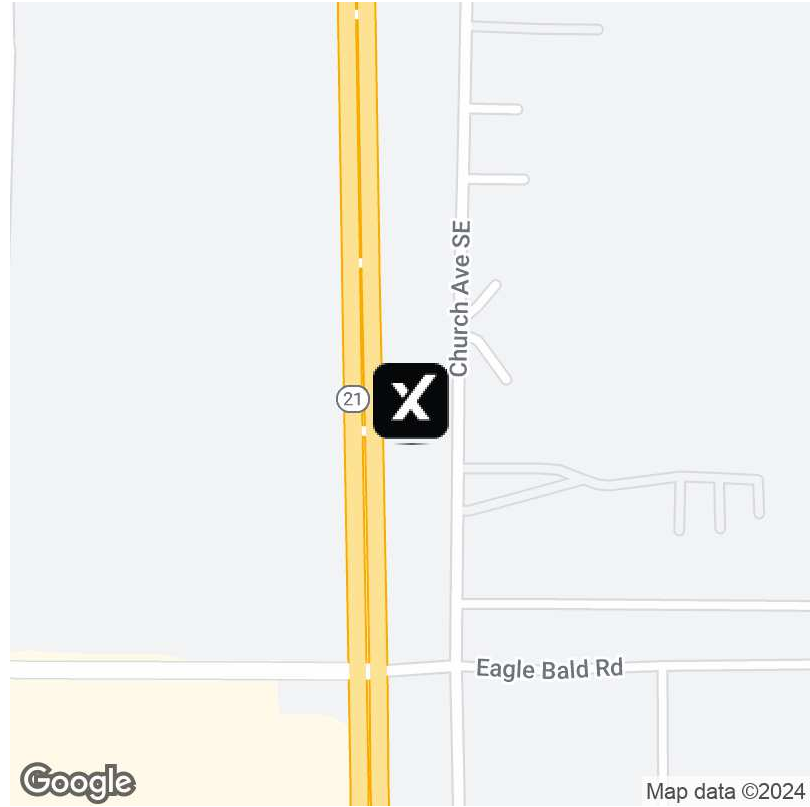


FOR SALE | Signal Intersection @ Walmart near JSU

1550 Pelham Road, Highway 21, Jacksonville, AL 36265



Offering Summary

Building Size:	2,800 SF
Available SF:	
Lot Size:	3 Acres
Price / SF:	\$569.64
Year Built:	1960
Renovated:	2015
Zoning:	B2 Commercial
Market:	Birmingham
Submarket:	Anniston
Traffic Count:	26,300

Property Overview

3+- acres at busiest intersection in Jacksonville, AL. in front of Wal Mart at a signaled intersection.

Jacksonville State University student housing and Nursing Student facility, Apartments, Wal Mart, CV Stores, Medical and more within walking distance to this busy corner.

Property Highlights

Marsha Whisenhunt

256.302.2822

marsha.whisenhunt@expcommercial.com

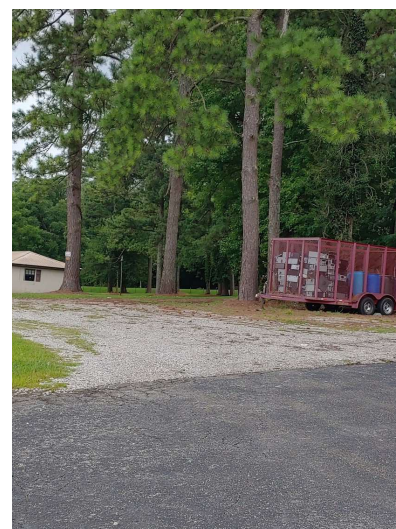
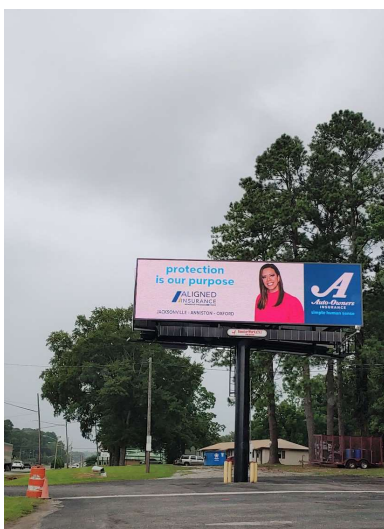
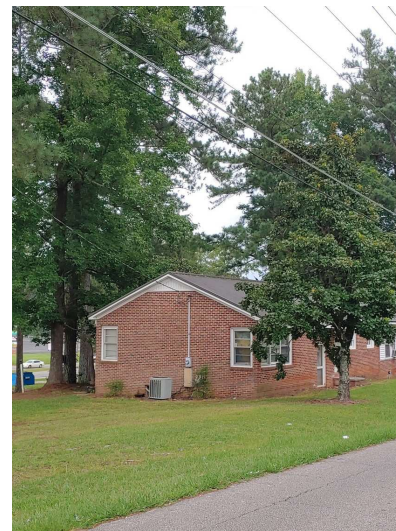


eXp Commercial, LLC, its direct and indirect parents and their subsidiaries (together, "We") obtained the information above from sources believed to be reliable, however, We have not verified its accuracy and make no guarantee, warranty or representation, expressed or implied, about such information. The information contained above is submitted subject to the possibility of errors, omissions, price changes, rental or other conditions, prior sale, lease or financing, or withdrawal without notice. Any projections, opinions, assumptions or estimates of the information contained above or provided in connection therewith, either expressed or implied, are for example only, and they may not represent current or future performance of the subject property. You, together with your tax and legal advisors, should conduct your own thorough investigation of the subject property and potential investment.

FOR SALE

Signal Intersection @ Walmart near JSU

1550 Pelham Road, Highway 21, Jacksonville, AL 36265



Marsha Whisenhunt

256.302.2822

marsha.whisenhunt@expcommercial.com

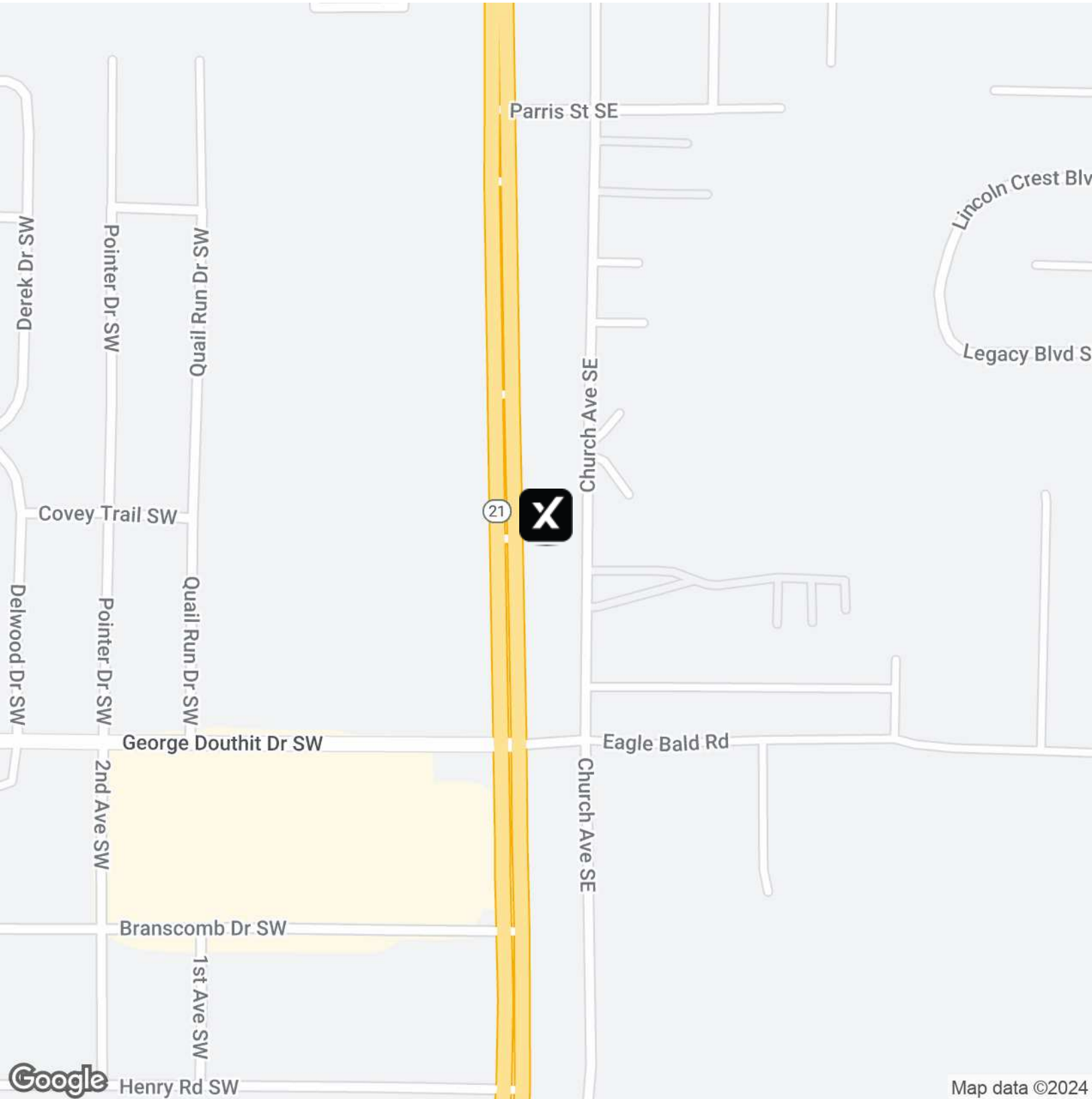
expTM
COMMERCIAL

eXp Commercial, LLC, its direct and indirect parents and their subsidiaries (together, "We") obtained the information above from sources believed to be reliable, however, We have not verified its accuracy and make no guarantee, warranty or representation, expressed or implied, about such information. The information contained above is submitted subject to the possibility of errors, omissions, price changes, rental or other conditions, prior sale, lease or financing, or withdrawal without notice. Any projections, opinions, assumptions or estimates of the information contained above or provided in connection therewith, either expressed or implied, are for example only, and they may not represent current or future performance of the subject property. You, together with your tax and legal advisors, should conduct your own thorough investigation of the subject property and potential investment.

FOR SALE

Signal Intersection @ Walmart near JSU

1550 Pelham Road, Highway 21, Jacksonville, AL 36265



Marsha Whisenhunt

256.302.2822

marsha.whisenhunt@expcommercial.com

expTM
COMMERCIAL

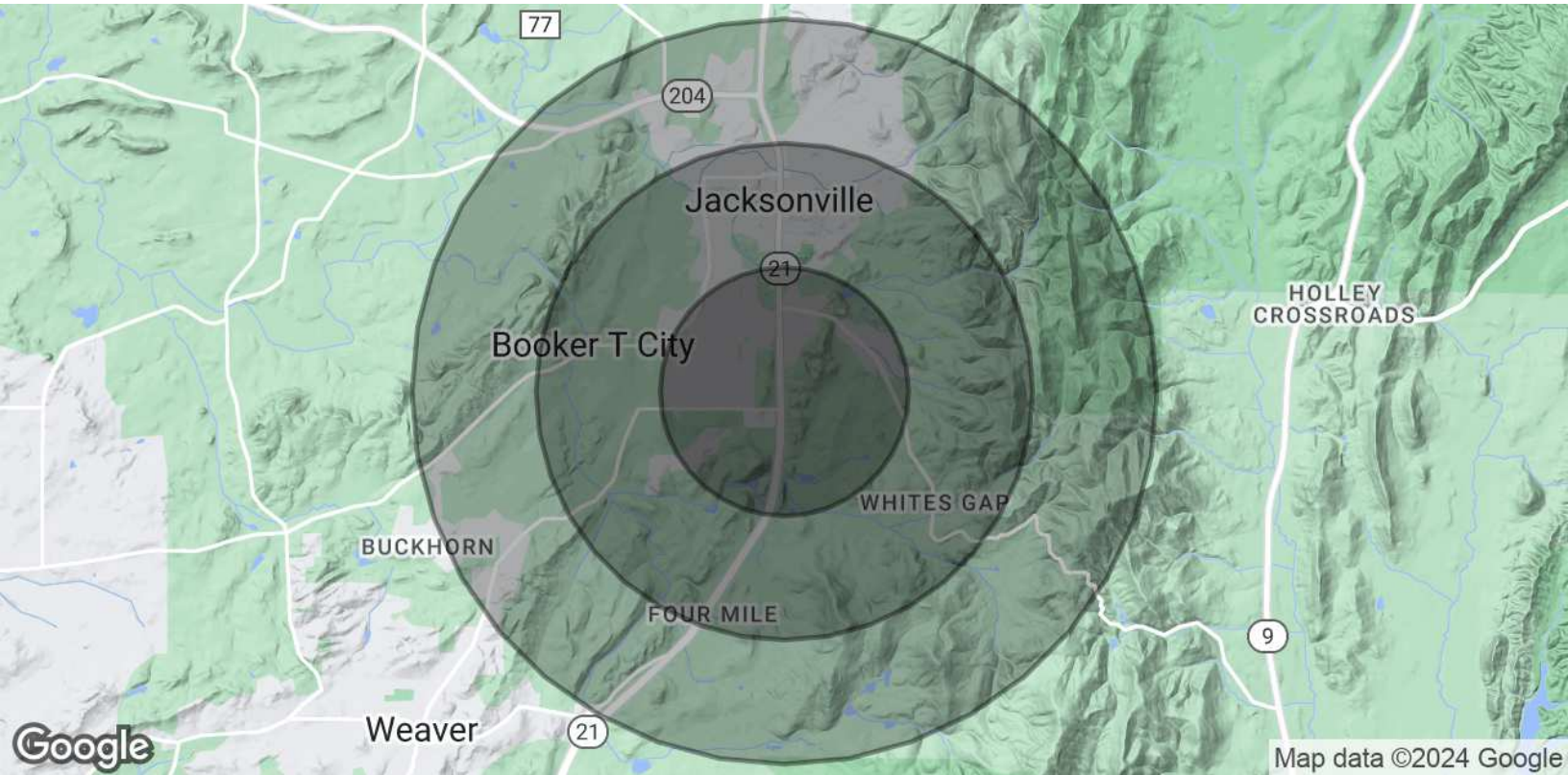
eXp Commercial, LLC, its direct and indirect parents and their subsidiaries (together, "We") obtained the information above from sources believed to be reliable, however, We have not verified its accuracy and make no guarantee, warranty or representation, expressed or implied, about such information. The information contained above is submitted subject to the possibility of errors, omissions, price changes, rental or other conditions, prior sale, lease or financing, or withdrawal without notice. Any projections, opinions, assumptions or estimates of the information contained above or provided in connection therewith, either expressed or implied, are for example only, and they may not represent current or future performance of the subject property. You, together with your tax and legal advisors, should conduct your own thorough investigation of the subject property and potential investment.

FOR SALE

|

Signal Intersection @ Walmart near JSU

1550 Pelham Road, Highway 21, Jacksonville, AL 36265



Population	1 Mile	2 Miles	3 Miles
Total Population	3,150	8,665	14,506
Average Age	32.4	32.8	32.9
Average Age (Male)	30.4	31.9	32.0
Average Age (Female)	34.7	33.9	33.8

Households & Income	1 Mile	2 Miles	3 Miles
Total Households	1,483	4,149	6,538
# of Persons per HH	2.1	2.1	2.2
Average HH Income	\$59,450	\$51,036	\$50,753
Average House Value	\$137,323	\$123,995	\$117,096

* Demographic data derived from 2020 ACS - US Census

Marsha Whisenhunt

256.302.2822

marsha.whisenhunt@expcommercial.com



eXp Commercial, LLC, its direct and indirect parents and their subsidiaries (together, "We") obtained the information above from sources believed to be reliable, however, We have not verified its accuracy and make no guarantee, warranty or representation, expressed or implied, about such information. The information contained above is submitted subject to the possibility of errors, omissions, price changes, rental or other conditions, prior sale, lease or financing, or withdrawal without notice. Any projections, opinions, assumptions or estimates of the information contained above or provided in connection therewith, either expressed or implied, are for example only, and they may not represent current or future performance of the subject property. You, together with your tax and legal advisors, should conduct your own thorough investigation of the subject property and potential investment.