

PROPERTY FOR LEASE

Pembroke James Towne Offices II

37601-37649 Pembroke, Livonia, MI 48152



LIBERTY
PROPERTY & ASSET MANAGEMENT

VIRTUAL TOUR

PROPERTY SUMMARY



Property Highlights

- Fully Renovated Property
- Under New Ownership
- Professionally Managed
- Direct Suite Entry
- Tenant Control Over Heating & Cooling
- Close Proximity to I-275 & I-96
- Aggressive Lease Rates & Improvement Allowance



FOR MORE INFORMATION:

Aaron Smith

Vice President
248.637.3515
asmith@lmcap.com

Michael Elle

Sales Associate
248.637.3526
melle@LMCap.com



CONNECT WITH US

248.637.9700 | www.LMCap.com

Information contained herein was obtained from sources deemed to be reliable but is not guaranteed. Subjects to prior sales, changes of price or withdrawal.

PROPERTY FOR LEASE

Pembroke James Towne Offices II

37601-37649 Pembroke, Livonia, MI 48152



LIBERTY
PROPERTY & ASSET MANAGEMENT

OFFICE PROPERTY DETAILS

Location Information

Street Address	37601-37649 Pembroke
City, State, Zip	Livonia, MI 48152
County	Wayne
Cross-Streets	Pembroke/Newburgh Rd
Nearest Highway	I-275/I-96

Building Information

Building Size	20,000 SF
Building Class	B
Occupancy	Immediate
Number of Floors	1
Year Built	1998
Gross Leasable Area	1,603 SF
Annual Escalations	\$0.50
Partition Allowance	Negotiable
Operating Expenses	Base Year
Signage	Suite Entry

Lease Rate

**\$17.50 SF/yr
+ Utilities**

Property Information

Property Type	Office
Property Subtype	Medical
Zoning	OS
APN #	46-024-99-0062-007

Parking & Transportation

Parking Ratio	4.5/1,000
---------------	-----------

Available Suites

37619 Pembroke - 1,950 SF	\$17.50 + Utilities
---------------------------	---------------------

FOR MORE INFORMATION:

Aaron Smith

Vice President
248.637.3515
asmith@lmcap.com

Michael Elle

Sales Associate
248.637.3526
melle@LMCap.com



CONNECT WITH US

248.637.9700 | www.LMCap.com

Information contained herein was obtained from sources deemed to be reliable but is not guaranteed. Subjects to prior sales, changes of price or withdrawal.

PROPERTY FOR LEASE

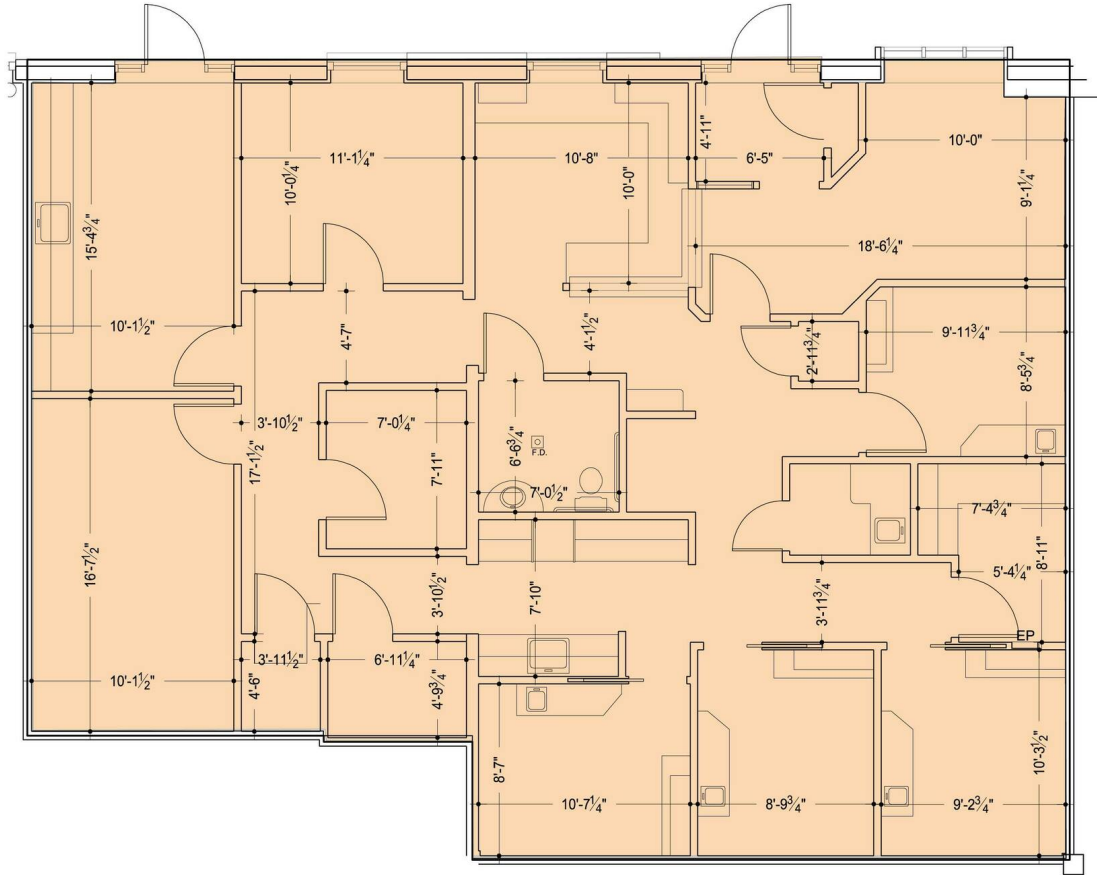
Pembroke James Towne Offices II

37601-37649 Pembroke Livonia, MI 48152



LIBERTY
PROPERTY & ASSET MANAGEMENT

FLOOR PLAN



37619 PEMBROKE

1,950 S.F. 10-23-2023 SCALE: 1/8" = 1'-0"

Available Spaces

Suite	Tenant	Size (SF)	Lease Type	Lease Rate	Video
37619 Pembroke	Available	1,950 SF	+ Utilities	\$17.50 SF/yr	View Here

FOR MORE INFORMATION:

Aaron Smith

Vice President
248.637.3515
asmith@lmcap.com

Michael Elle

Sales Associate
248.637.3526
melle@LMCap.com



CONNECT WITH US

248.637.9700 | www.LMCap.com

Information contained herein was obtained from sources deemed to be reliable but is not guaranteed. Subjects to prior sales, changes of price or withdrawal.