

# FOR SALE

924 Halesworth Drive Cincinnati, OH 45240

**NAI**Bergman

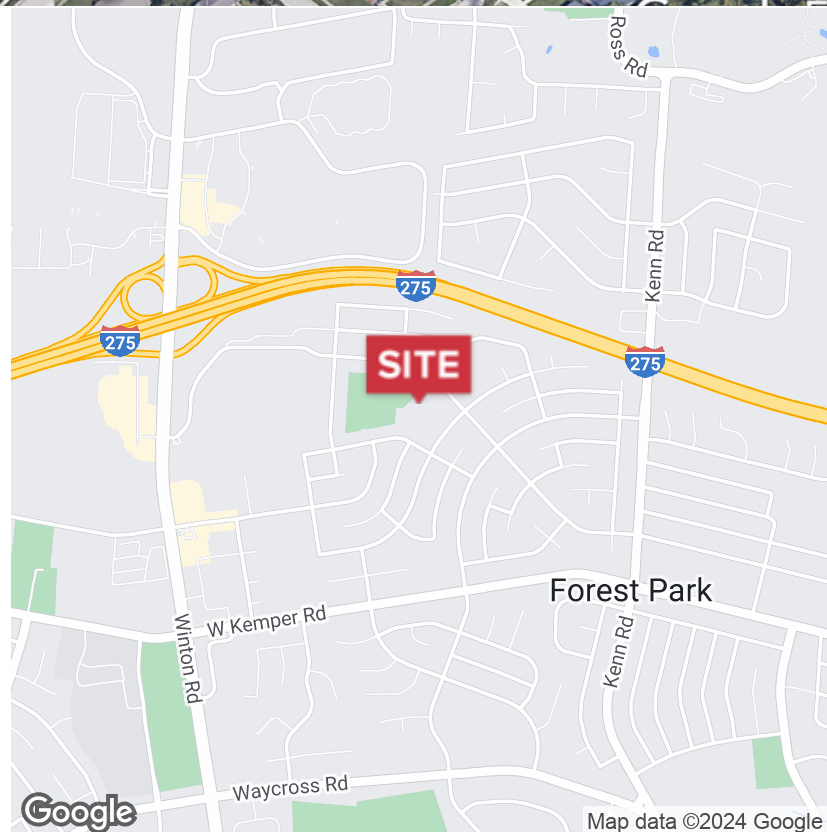


## Land | 11.87 Acres

- Cleared 11.87 acre site
- Former Forest View School Site. Building has been demolished
- Current Zoning: R-2 One-Family Residence (quarter-acre lots)

### DEMOGRAPHICS

STATS	POPULATION	AVG. HH INCOME
1 MILE	10,346	\$76,093
3 MILES	66,339	\$78,300
5 MILES	156,634	\$82,187



**Laurence Bergman**

+1 513 322 6307

[larry@bergman-group.com](mailto:larry@bergman-group.com)

No Warranty Or Representation, Express Or Implied, Is Made As To The Accuracy Of The Information Contained Herein, And The Same Is Submitted Subject To Errors, Omissions, Change Of Price, Rental Or Other Conditions, Prior Sale, Lease Or Financing, Or Withdrawal Without Notice, And Of Any Special Listing Conditions Imposed By Our Principals. No Warranties Or Representations Are Made As To The Condition Of The Property Or Any Hazards Contained Therein Are Any To Be Implied.



**4695 Lake Forest Drive**

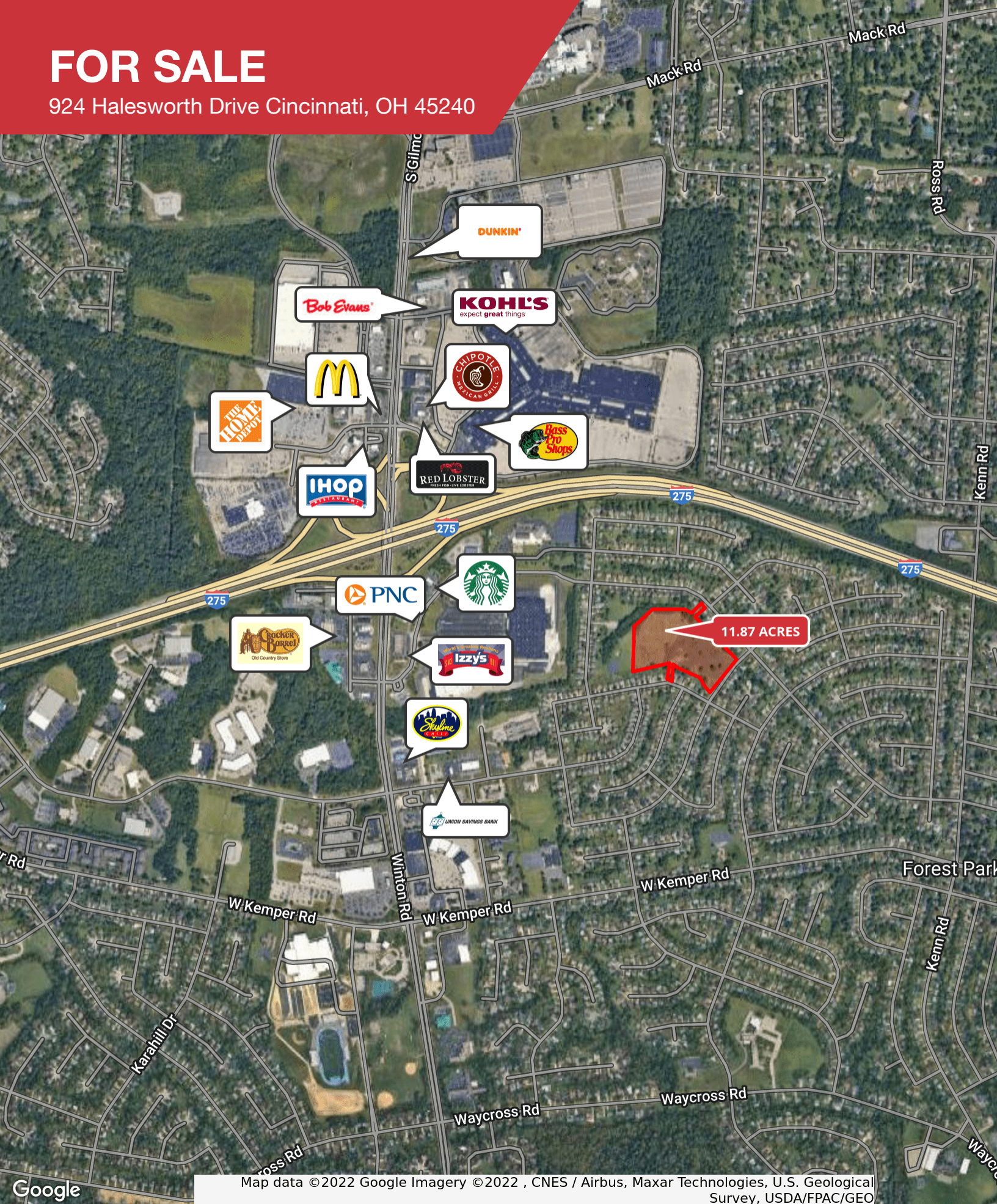
**Cincinnati, OH 45242**

[bergmancommercial.com](http://bergmancommercial.com)



# FOR SALE

924 Halesworth Drive Cincinnati, OH 45240



Map data ©2022 Google Imagery ©2022 , CNES / Airbus, Maxar Technologies, U.S. Geological Survey, USDA/FPAC/GEO

✉ Laurence Bergman  
+1 513 322 6307  
larry@bergman-group.com

No Warranty Or Representation, Express Or Implied, Is Made As To The Accuracy Of The Information Contained Herein, And The Same Is Submitted Subject To Errors, Omissions, Change Of Price, Rental Or Other Conditions, Prior Sale, Lease Or Financing, Or Withdrawal Without Notice, And Of Any Special Listing Conditions Imposed By Our Principals No Warranties Or Representations Are Made As To The Condition Of The Property Or Any Hazards Contained Therein Are Any To Be Implied.

**NABergman**



# FOR SALE

924 Halesworth Drive Cincinnati, OH 45240

924 Halesworth Dr Cincinnati, OH 45240	1 mi radius	3 mi radius	5 mi radius	10 mi radius
<b>Population</b>				
2022 Estimated Population	10,346	66,339	156,634	621,196
2027 Projected Population	10,276	66,281	157,403	627,619
2020 Census Population	10,548	66,481	157,698	624,366
2010 Census Population	9,902	63,754	151,641	599,430
Projected Annual Growth 2022 to 2027	-0.1%	-	-	0.2%
Historical Annual Growth 2010 to 2022	0.4%	0.3%	0.3%	0.3%
2022 Median Age	37.8	38.1	38.4	39.3
<b>Households</b>				
2022 Estimated Households	3,816	26,588	62,042	248,665
2027 Projected Households	3,808	26,763	62,803	252,644
2020 Census Households	3,889	26,617	62,419	249,844
2010 Census Households	3,755	25,891	60,084	239,061
Projected Annual Growth 2022 to 2027	-	0.1%	0.2%	0.3%
Historical Annual Growth 2010 to 2022	0.1%	0.2%	0.3%	0.3%
<b>Race and Ethnicity</b>				
2022 Estimated White	29.3%	45.9%	52.2%	62.2%
2022 Estimated Black or African American	49.5%	34.8%	30.8%	23.5%
2022 Estimated Asian or Pacific Islander	4.1%	5.8%	5.0%	4.4%
2022 Estimated American Indian or Native Alaskan	0.7%	0.5%	0.5%	0.4%
2022 Estimated Other Races	16.5%	13.1%	11.6%	9.6%
2022 Estimated Hispanic	14.0%	10.2%	8.6%	6.2%
<b>Income</b>				
2022 Estimated Average Household Income	\$76,093	\$78,300	\$82,187	\$90,416
2022 Estimated Median Household Income	\$66,142	\$64,690	\$67,036	\$72,178
2022 Estimated Per Capita Income	\$28,174	\$31,477	\$32,650	\$36,326
<b>Education (Age 25+)</b>				
2022 Estimated Elementary (Grade Level 0 to 8)	3.4%	2.7%	2.8%	2.4%
2022 Estimated Some High School (Grade Level 9 to 11)	7.1%	5.5%	5.3%	5.8%
2022 Estimated High School Graduate	32.9%	31.2%	31.9%	29.3%
2022 Estimated Some College	23.1%	21.0%	20.9%	19.6%
2022 Estimated Associates Degree Only	6.8%	8.2%	8.6%	8.0%
2022 Estimated Bachelors Degree Only	18.5%	21.3%	20.4%	22.2%
2022 Estimated Graduate Degree	8.3%	10.1%	10.2%	12.8%
<b>Business</b>				
2022 Estimated Total Businesses	292	3,075	7,323	24,263
2022 Estimated Total Employees	3,370	49,159	112,057	371,590
2022 Estimated Employee Population per Business	11.5	16.0	15.3	15.3
2022 Estimated Residential Population per Business	35.4	21.6	21.4	25.6

©2022, Sites USA, Chandler, Arizona, 480-491-1112 Demographic Source: Applied Geographic Solutions 6/2022, TIGER Geography - RS1

This report was produced using data from private and government sources deemed to be reliable. The information herein is provided without representation or warranty.

page 1 of 1