

2539 LAFAYETTE PLAZA DR
Albany, GA 31707



OFFERING SUMMARY

Available SF: 2,815 SF

Lease Rate: \$18.00 SF/yr (NNN)
OPEX = \$3.43 SF/yr
Includes electric and water

Building Size: 6,640 SF

Video: [Click Here](#)

PROPERTY OVERVIEW

First floor Class A office space available for lease. This space is perfect for accountants, attorneys, architects, realtors, insurance agents, financial planners and other professionals. Equipped with four corner executive offices, three assistant's offices, three recessed office spaces, workspace/file room, spacious kitchen, conference room, lobby and recessed reception. Walking distance to post office, UPS and FedEx drop boxes. Multiple banks, shops, restaurants and gyms nearby. Located off of N Westover Blvd with a VPD over 20,000.

PROPERTY HIGHLIGHTS

- Four executive corner offices
- Prominent road frontage
- Equipped with kitchen, conference room, and lobby.
- 3 assistant and 3 recessed offices
- Handicap accessible

WALTER KELLEY
205.235.0440
walterk@acrerep.com

GRIFFIN CARROLL
205.235.0440
griffinc@acrerep.com

ACRE REAL ESTATE PARTNERS, LLC
4274 Cahaba Heights Ct.
Birmingham, AL 35243
205.235.0440 | acrerep.com

2539 LAFAYETTE PLAZA DR
Albany, GA 31707

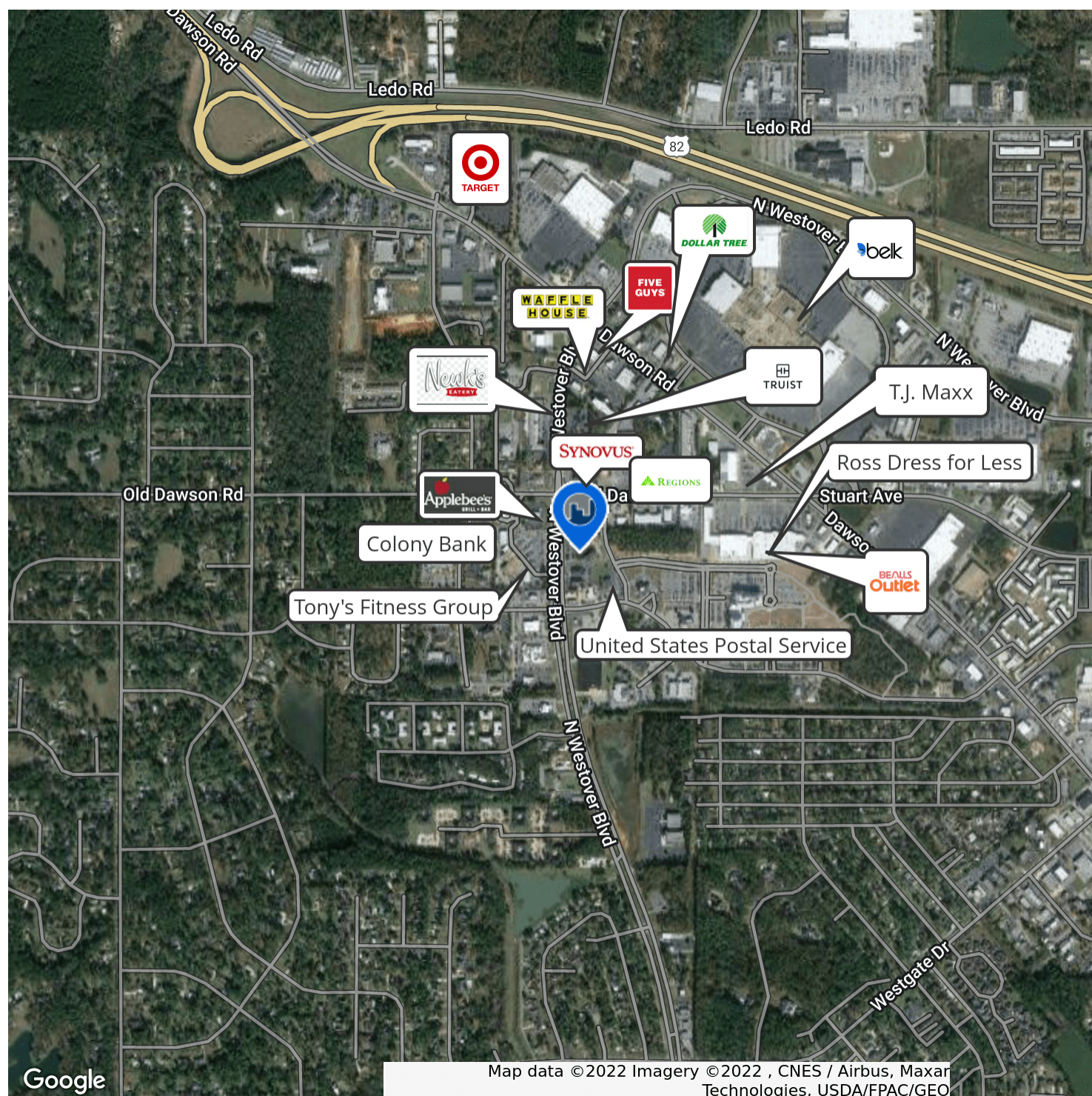


WALTER KELLEY
205.235.0440
walterk@acrerep.com

GRIFFIN CARROLL
205.235.0440
griffinc@acrerep.com

ACRE REAL ESTATE PARTNERS, LLC
4274 Cahaba Heights Ct.
Birmingham, AL 35243
205.235.0440 | acrerep.com

2539 LAFAYETTE PLAZA DR
Albany, GA 31707

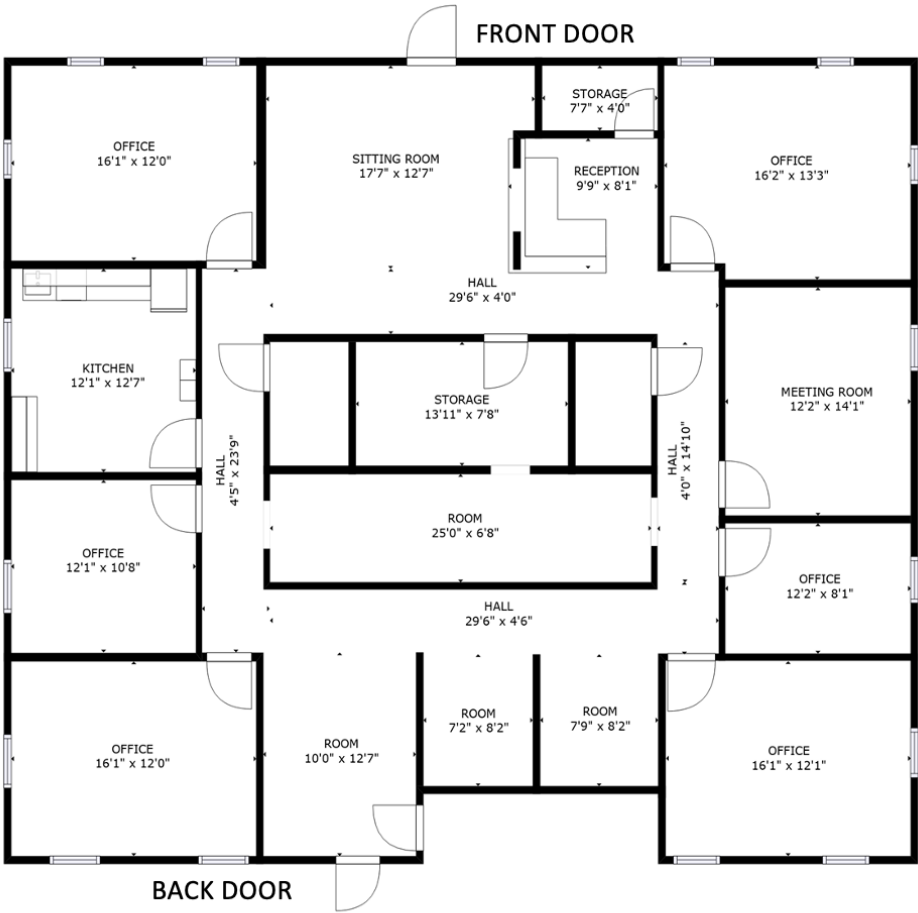


WALTER KELLEY
205.235.0440
walterk@acrerep.com

GRIFFIN CARROLL
205.235.0440
griffinc@acrerep.com

ACRE REAL ESTATE PARTNERS, LLC
4274 Cahaba Heights Ct.
Birmingham, AL 35243
205.235.0440 | acrerep.com

2539 LAFAYETTE PLAZA DR
Albany, GA 31707



GROSS INTERNAL AREA
FLOOR 1: 2815 sq. ft
TOTAL: 2815 sq. ft

SIZES AND DIMENSIONS ARE APPROXIMATE, ACTUAL MAY VARY.

FLOOR 1



WALTER KELLEY
205.235.0440
walterk@acrerep.com

GRIFFIN CARROLL
205.235.0440
griffinc@acrerep.com

ACRE REAL ESTATE PARTNERS, LLC
4274 Cahaba Heights Ct.
Birmingham, AL 35243
205.235.0440 | acrerep.com