



PANTHER PARK LOT 12 & 13

PANTHER PARK SUBDIVISION, BELGRADE, MT 59714

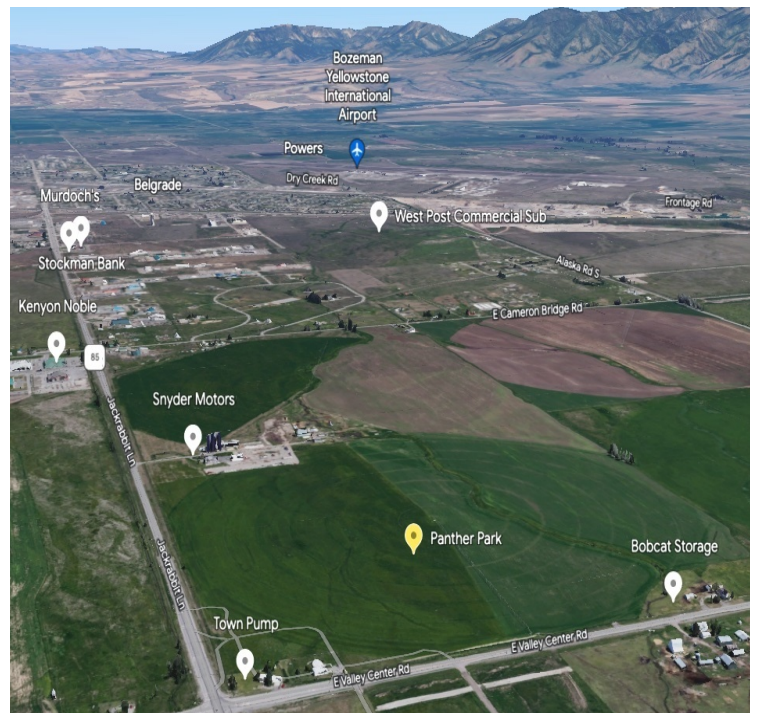


PROPERTY DESCRIPTION

Incredible development opportunity on two adjacent lots in newly established Panther Park Subdivision! These exceptional parcels of commercial land with no zoning offer endless possibilities for your business endeavors. Located just off of Valley Center and east of Jackrabbit Lane, this new subdivision is easily accessible between the thriving Belgrade and Bozeman communities, ensuring that customers can easily reach you. Final plat for Panther Park has been recorded.

OFFERING SUMMARY

Lot 12	5.309 Acres	\$2,775,000
Lot 13	3.952 Acres	\$1,894,000



FOR SALE

SUNNY ODEGARD

broker
406.570.4931
sunny@so-red.com

1276 North 15th Avenue #103 | Bozeman, MT 59715

starncommercial.com

This information has been obtained from sources believed reliable. We have not verified information and make no guarantee, warranty or representation about it. Any projections, opinions, assumptions or estimates used are for example only and do not represent current or future performance. You and your advisors should conduct careful, independent investigation of the property to determine your satisfaction and suitability of the property for your needs.