

SOUTHEAST 17TH STREET OFFICE SPACE

1510 SE 17th Street, Fort Lauderdale, FL 33316

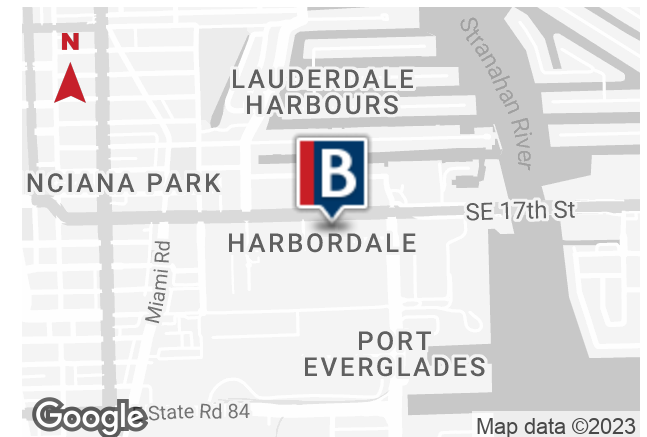


VIDEO TOUR



PROPERTY HIGHLIGHTS

- Full Floor Available - 7,000 +/- executive offices with perimeter offices, open work areas, large conference room, kitchenette, ample storage, floor to ceiling windows allow for natural light.
- Ideal for maritime related businesses and other professionals
- Building features include impact windows, limited covered parking, solar paneled parking structure with excellent visibility, close to everything.
- Located on highly sought after Southeast 17th Street Causeway in the Marine Executive Center
- Minutes to Port Everglades, restaurants, retail, and multiple yachting related businesses



St. George Guardabassi

Senior Vice President

954.652.2032

st.george@bergercommercial.com

Main Office

1600 Southeast 17th Street, Suite 200

Fort Lauderdale, FL 33316

954.358.0900

Palm Beach County Office

2240 Woolbright Road, Suite 300

Boynton Beach, FL 33426

561.613.0900

bergercommercial.com



COMMERCIAL BROKERAGE AND PROPERTY MANAGEMENT

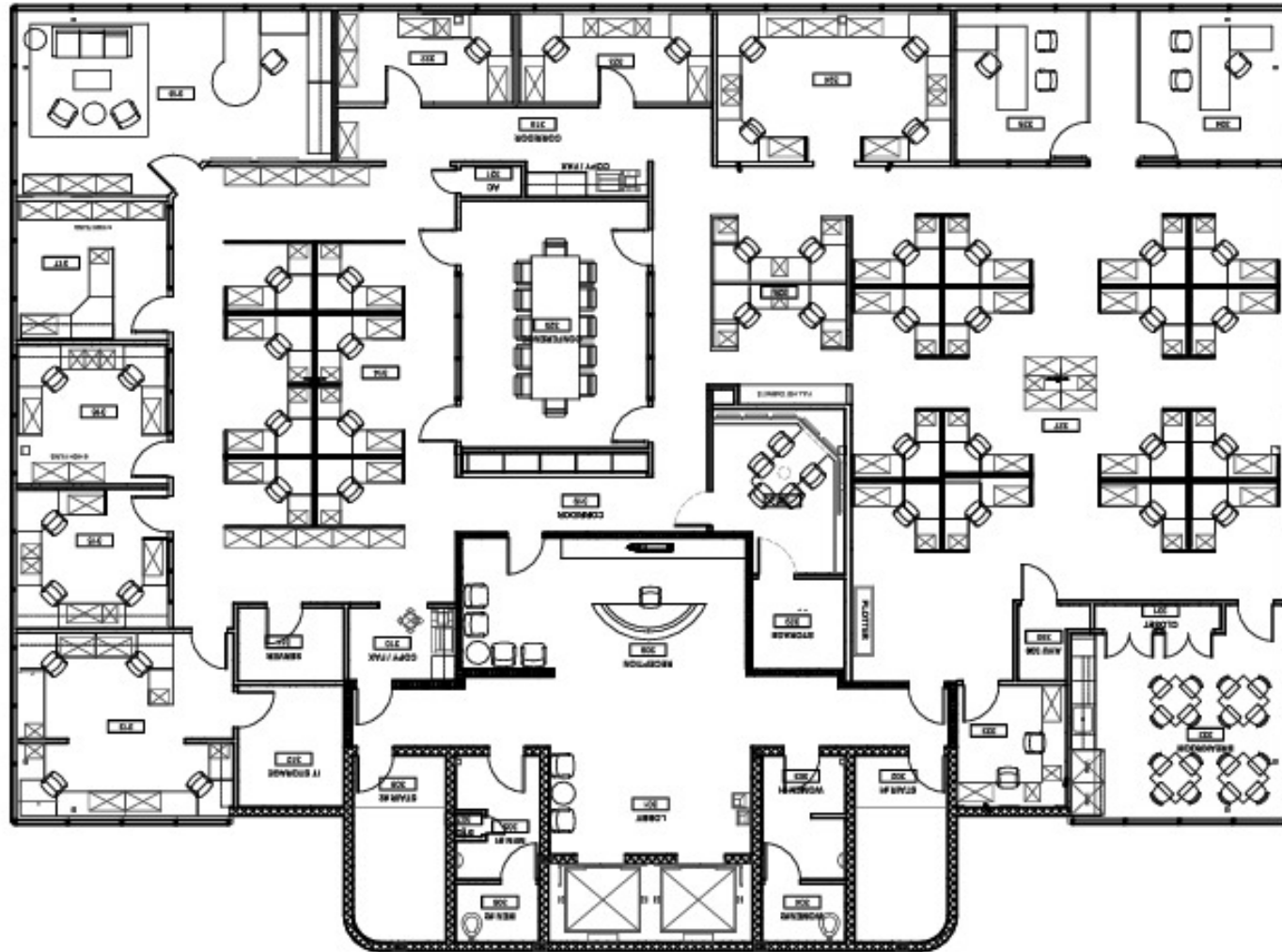


Information furnished regarding this property is from sources deemed reliable, but no warranty or representation as to the accuracy thereof and it is submitted subject to errors, omissions, prior sale, lease or withdrawal without prior notice.

4TH FLOOR PLAN

MARINE EXECUTIVE CENTER

1510 SE 17th Street, Fort Lauderdale, FL 33316



1 4TH FLOOR SPACE PLAN
7,000 +/- SF

ADDITIONAL PHOTOS

MARINE EXECUTIVE CENTER

1510 SE 17th Street, Fort Lauderdale, FL 33316



ADDITIONAL PHOTOS

MARINE EXECUTIVE CENTER

1510 SE 17th Street, Fort Lauderdale, FL 33316

