

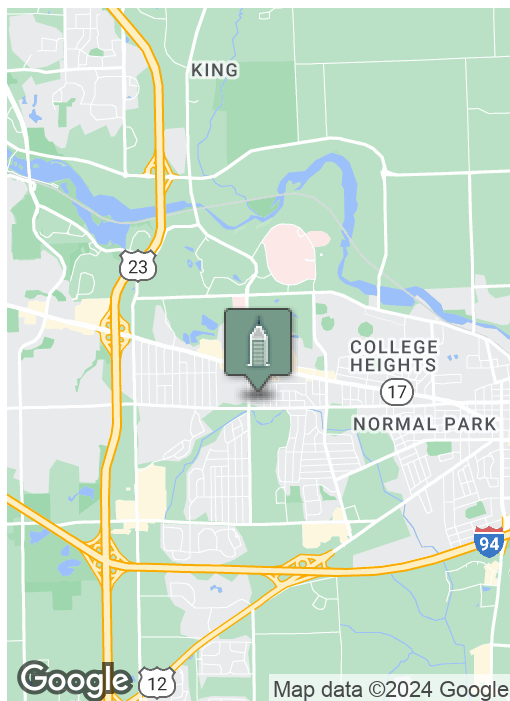
# Mixed Use Office | Medical | Dental

3020 PACKARD, YPSILANTI, MI 48197



**Swisher**  
COMMERCIAL

**FOR LEASE**



## SUMMARY

Suite 2 (990 SF):	\$1,200.00 per month Plus Utilities
Suite 3 (1,200 SF):	\$1,200.00 per month Plus Utilities
Zoning:	NC (NEIGHBORHOOD CORRIDOR)

## PROPERTY OVERVIEW

Ideal space for medical, therapist, massage, spa, professional services or general office. Dental office also possible as each office is plumbed for water. Private entrances for each suite.

Immediate availability. Tenant is responsible for electric, gas, and internet/cable. Ample at the door parking.

Located east of US 23/Carpenter/Golfside, directly across from the Washtenaw Golf Course.

***Building  
relationships.***

208 East Washington Street Ann Arbor, MI 48104

734.663.0501

Joe Palms, CCIM

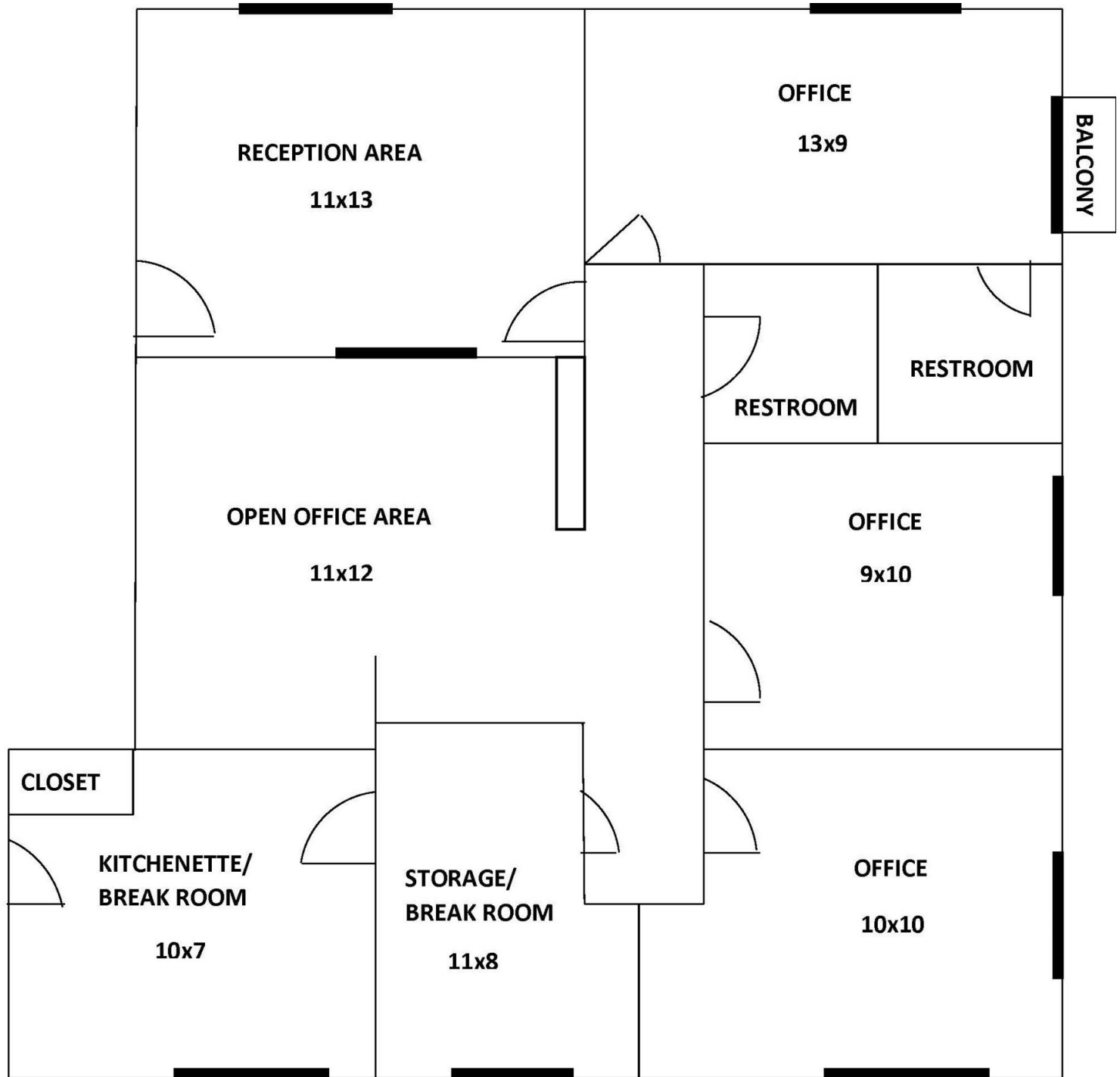
734.662.3676

JPALMS@SWISHERCOMMERCIAL.COM

SWISHERCOMMERCIAL.COM

# Mixed Use Office | Medical | Dental for Lease

3020 PACKARD, STE 2, YPSILANTI, MI 48197



Suite 2 Floor Plan

***Building  
relationships.***

208 East Washington Street Ann Arbor, MI 48104

734.663.0501

Joe Palms, CCIM

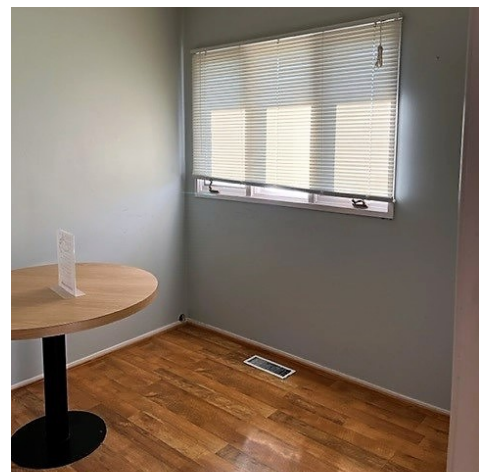
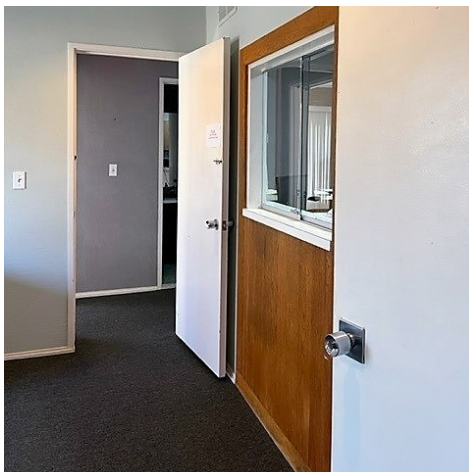
734.662.3676

JPALMS@SWISHERCOMMERCIAL.COM

SWISHERCOMMERCIAL.COM

# Mixed Use Office | Medical | Dental for Lease

3020 PACKARD, STE 2, YPSILANTI, MI 48197



***Building  
relationships.***

208 East Washington Street Ann Arbor, MI 48104

734.663.0501

Joe Palms, CCIM

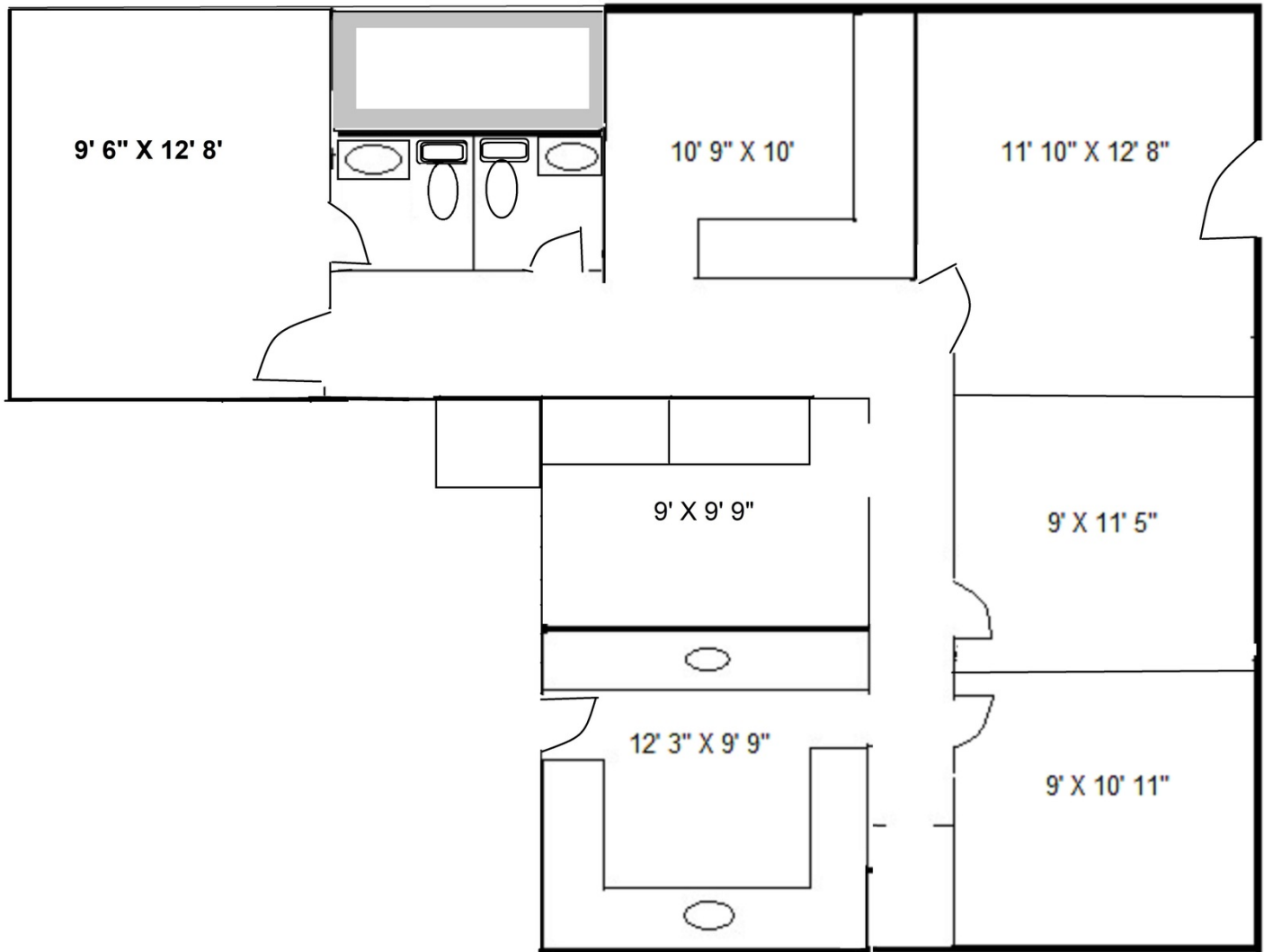
734.662.3676

JPALMS@SWISHERCOMMERCIAL.COM

SWISHERCOMMERCIAL.COM

# Mixed Use Office | Dental | Medical for Lease

3020 PACKARD, STE 3, YPSILANTI, MI 48197



Suite 3 Floor Plan

***Building  
relationships.***

208 East Washington Street Ann Arbor, MI 48104

734.663.0501

Joe Palms, CCIM

734.662.3676

JPALMS@SWISHERCOMMERCIAL.COM

SWISHERCOMMERCIAL.COM

# Mixed Use Office | Medical | Dental for Lease

3020 PACKARD, STE 3, YPSILANTI, MI 48197



***Building  
relationships.***

208 East Washington Street Ann Arbor, MI 48104

734.663.0501

Joe Palms, CCIM

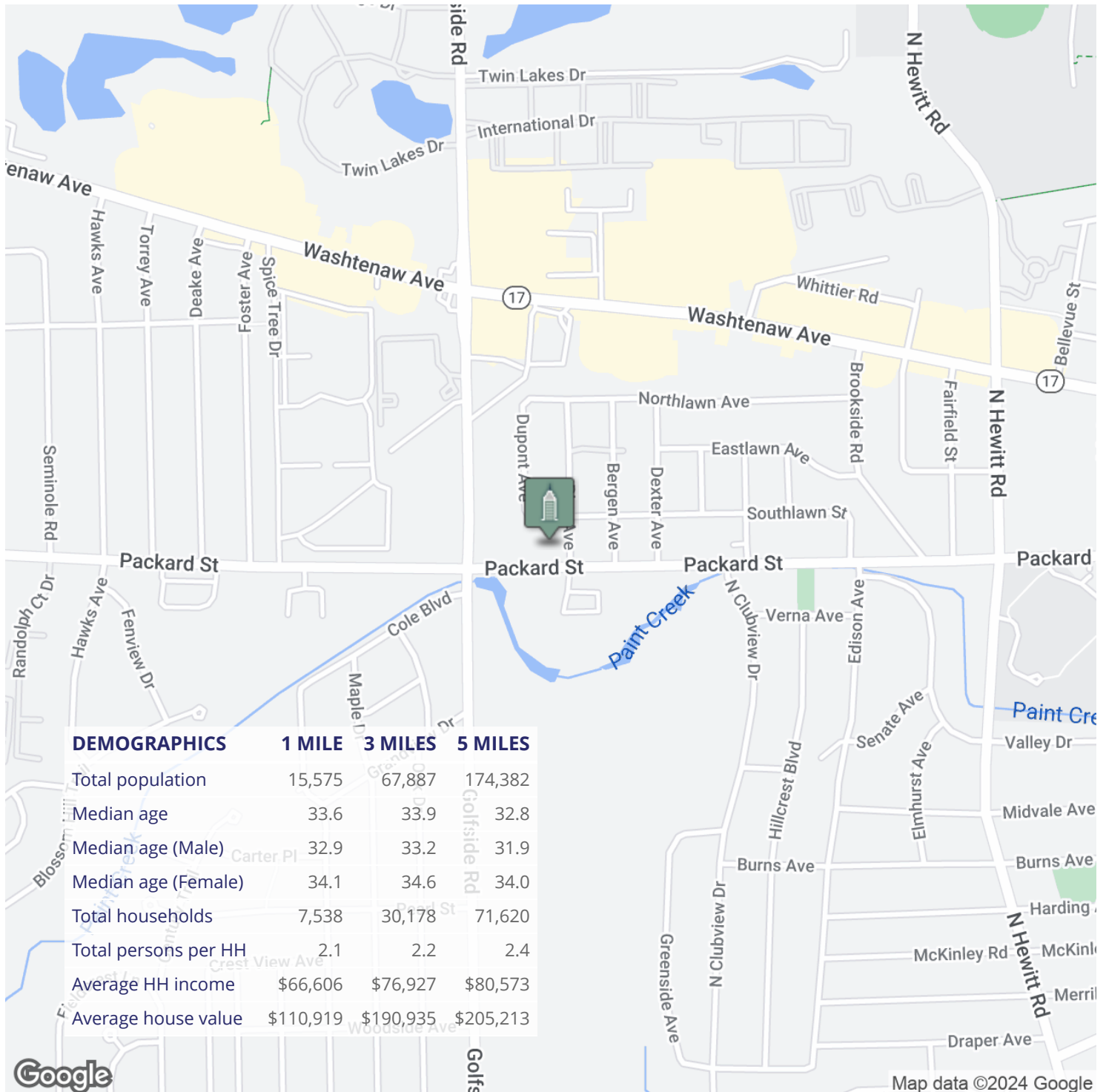
734.662.3676

JPALMS@SWISHERCOMMERCIAL.COM

SWISHERCOMMERCIAL.COM

# Mixed Use Office | Medical | Dental for Lease

3020 PACKARD, YPSILANTI, MI 48197



**Building  
relationships.**

208 East Washington Street Ann Arbor, MI 48104

734.663.0501

Joe Palms, CCIM

734.662.3676

JPALMS@SWISHERCOMMERCIAL.COM

SWISHERCOMMERCIAL.COM