

welltower

MEDICAL OFFICE SPACE
FOR LEASE

Click or Scan Below



For Information:

GARY GAGNE

Director of Leasing

561.339.3191

ggagne@welltower.com

Abacoa Professional Center II

600 HERITAGE DRIVE | JUPITER, FL

medicaloffice.welltower.com

EXECUTIVE SUMMARY



GARY GAGNE
Director of Leasing
561.339.3191
ggagne@welltower.com

Location Description

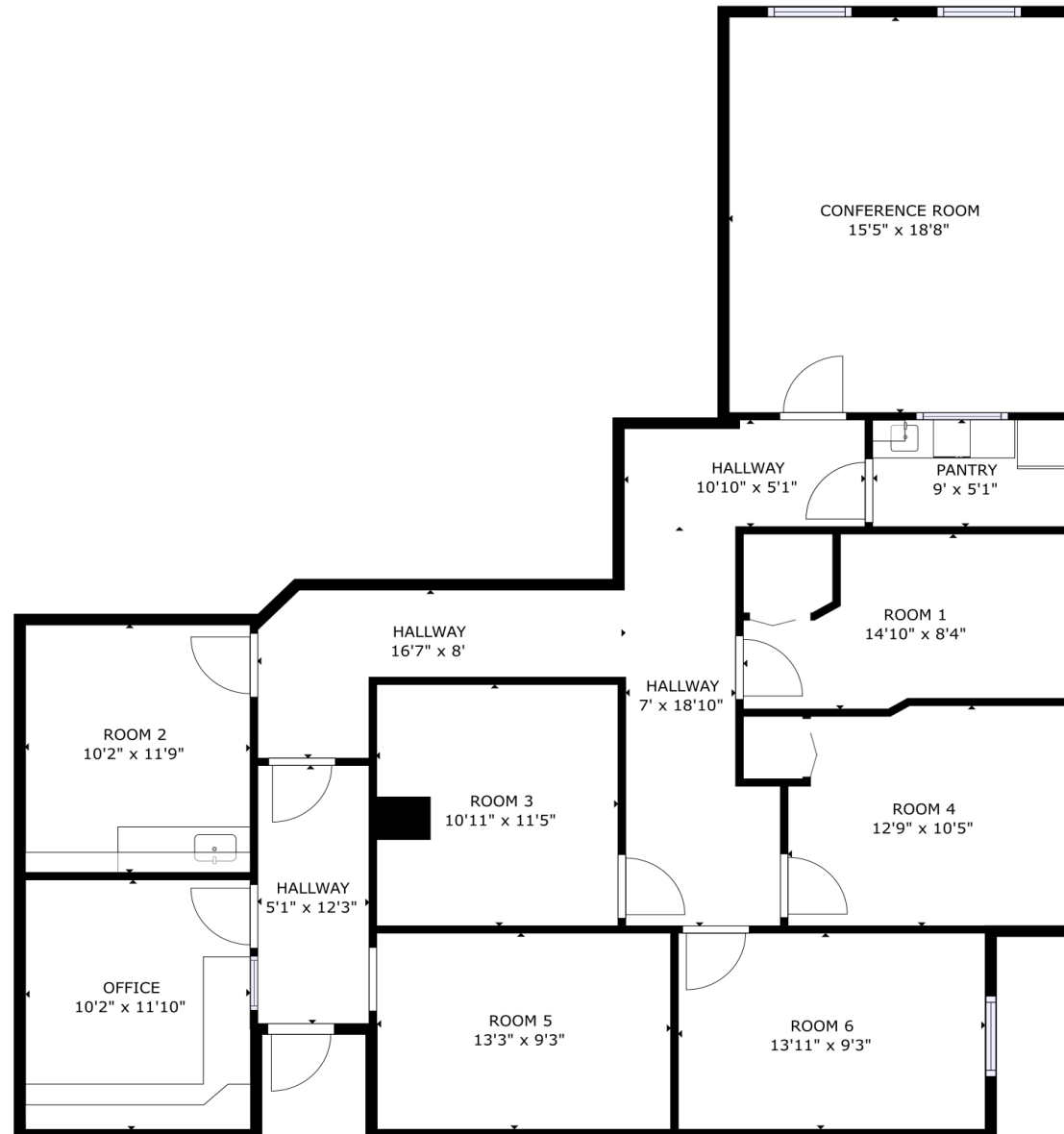
The Abacoa buildings are located at the southwest corner of Military Trail and Heritage Drive.

Property Highlights

- Practices within the building include dermatology, ophthalmology, OB/GYN and family practice
- Conveniently located off of Military Trail and Donald Ross with convenient access to I-95
- Competitive lease rates and terms
- Nearby Hospitals: Jupiter Medical Center, Palm Beach Gardens Medical Center

SUITE 130 | 2,016 RSF

welltower



DEMOGRAPHICS MAP & REPORT



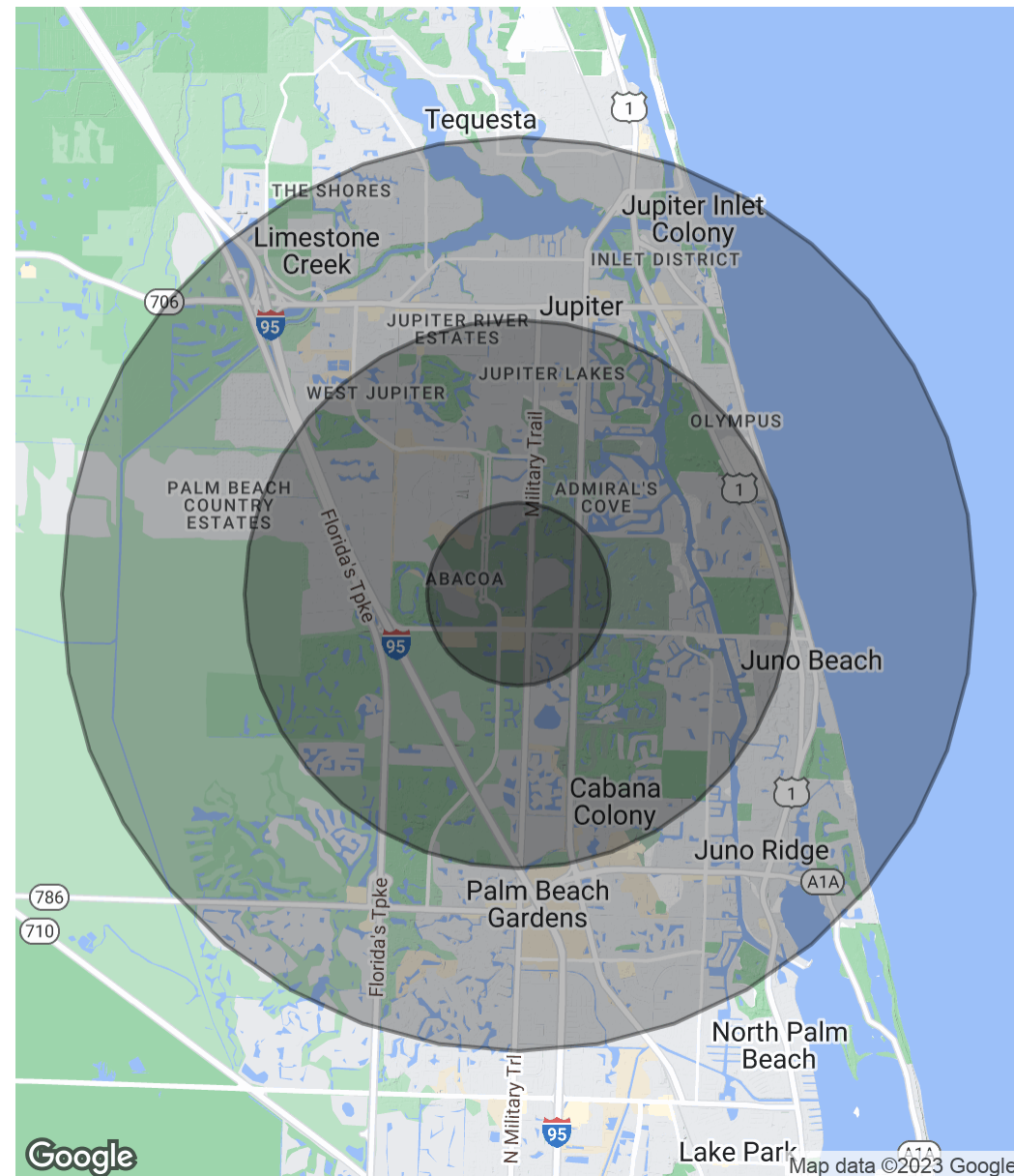
Population

	1 Mile	3 Miles	5 Miles
Total Population	6,904	54,955	125,505
Average Age	35.9	43.0	45.1
Average Age (Male)	36.2	43.6	45.2
Average Age (Female)	36.7	43.2	45.5

Households & Income

	1 Mile	3 Miles	5 Miles
Total Households	2,623	22,882	54,511
# of Persons per HH	2.6	2.4	2.3
Average HH Income	\$106,059	\$113,800	\$106,833
Average House Value	\$456,923	\$455,144	\$456,921

* Demographic data derived from 2020 ACS - US Census



GARY GAGNE

Director of Leasing

561.339.3191

ggagne@welltower.com