

welltower

MEDICAL OFFICE SPACE  
**FOR LEASE**

Click or Scan Below



*For Information:*

**WELLTOWER LEASING**  
833.275.9355  
[leasing@welltower.com](mailto:leasing@welltower.com)

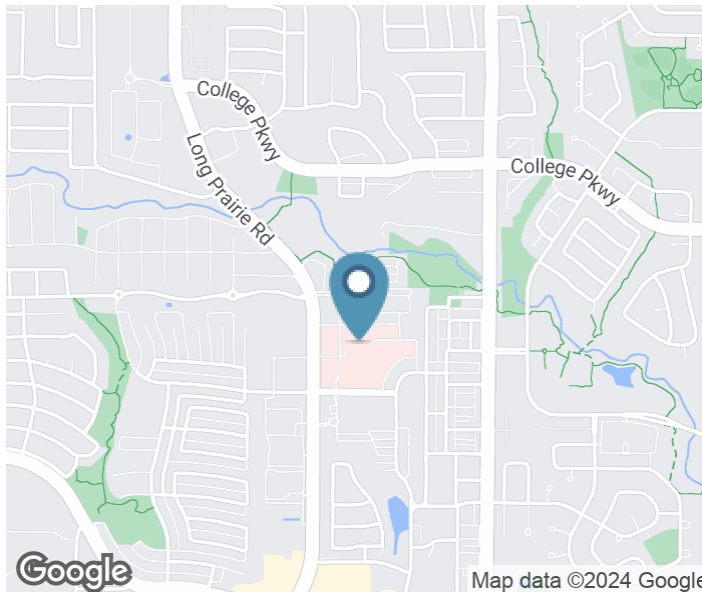
**River Walk Medical Park III**

4370 MEDICAL ARTS DRIVE | FLOWER MOUND, TX

[medicaloffice.welltower.com](http://medicaloffice.welltower.com)



# EXECUTIVE SUMMARY



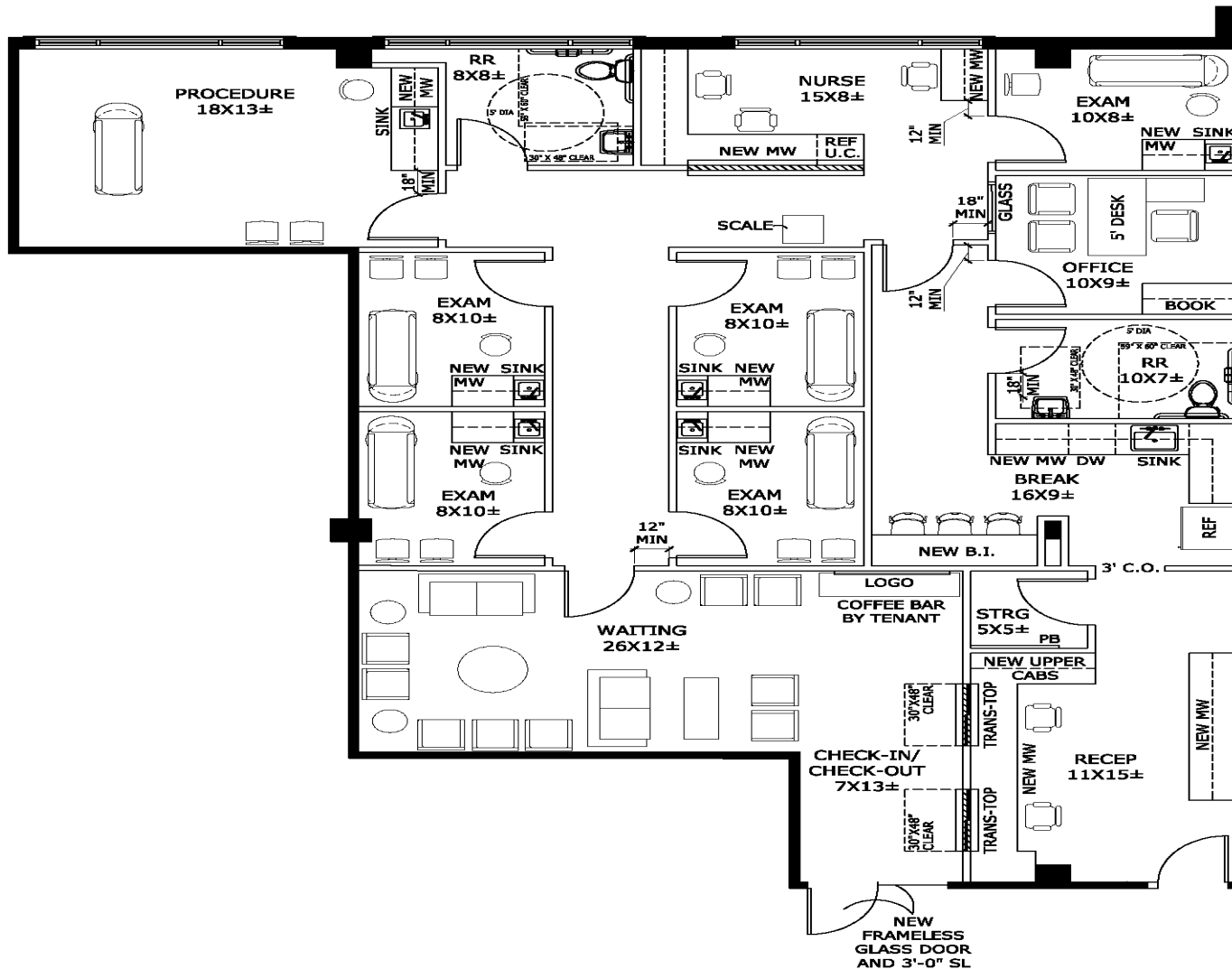
## Location Description

River Walk III is attached to the Texas Health Presbyterian Hospital in Flower Mound, Texas located on Medical Arts Drive, just Northeast of the intersection of Long Prairie Rd (2499) and Windsor Dr./ Central Park Ave.

## Property Highlights

- 83,000 square foot, Class A medical office building located in the new River Walk Professional Park
- Directly attached to the new Texas Health Presbyterian Hospital Flower Mound
- Anchored by Texas Oncology
- Medical office suites ready to be designed to your specifications

**welltower**



**WELLTOWER LEASING**  
833.275.9355  
leasing@welltower.com

# FLOOR PLANS

welltower



255

5,420 RSF

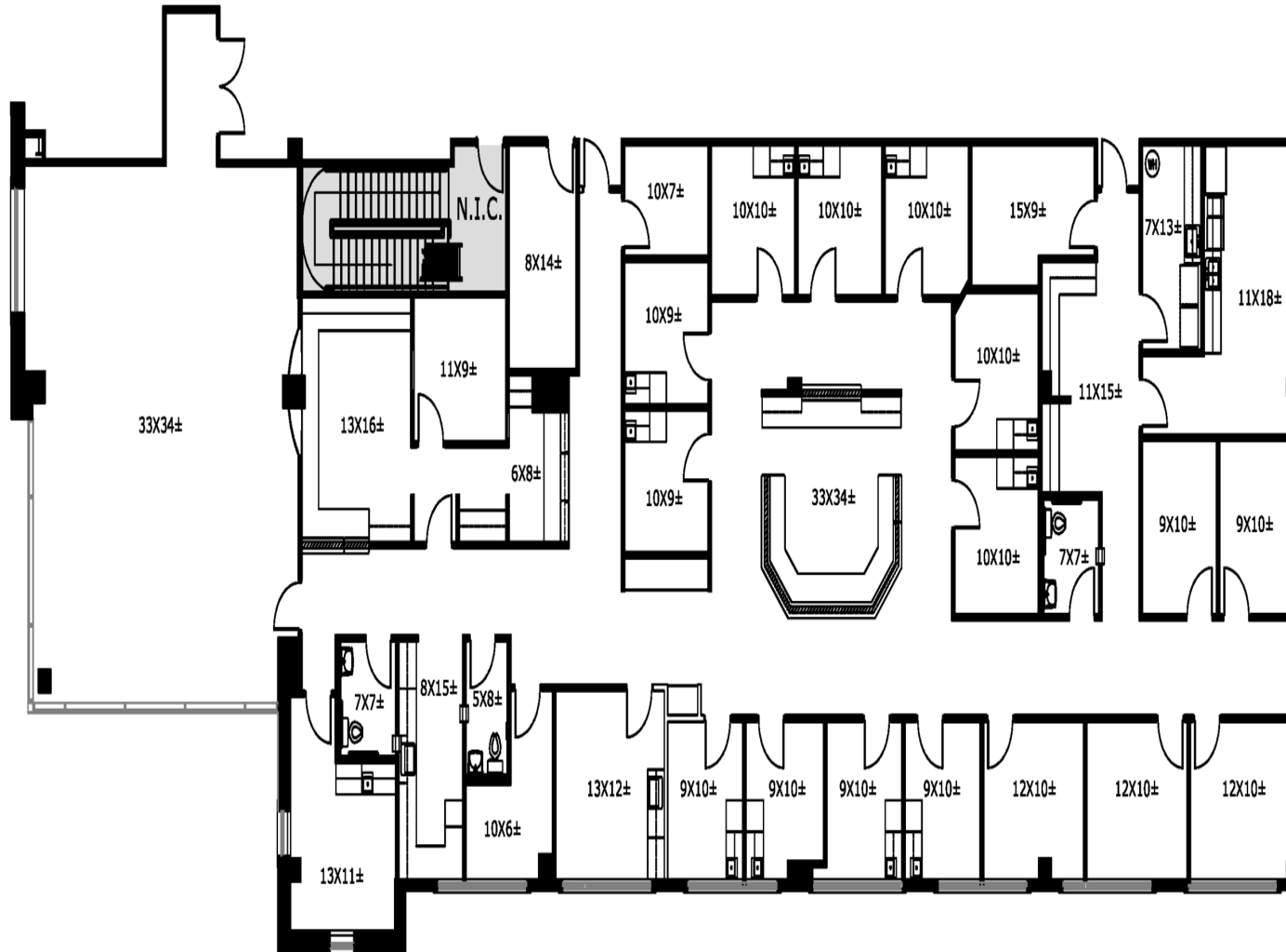
**WELLTOWER LEASING**  
833.275.9355  
leasing@welltower.com





# FLOOR PLANS

welltower



300

2,697 RSF

**WELLTOWER LEASING**  
833.275.9355  
leasing@welltower.com

# FLOOR PLANS

welltower



310

Floor Plan Information

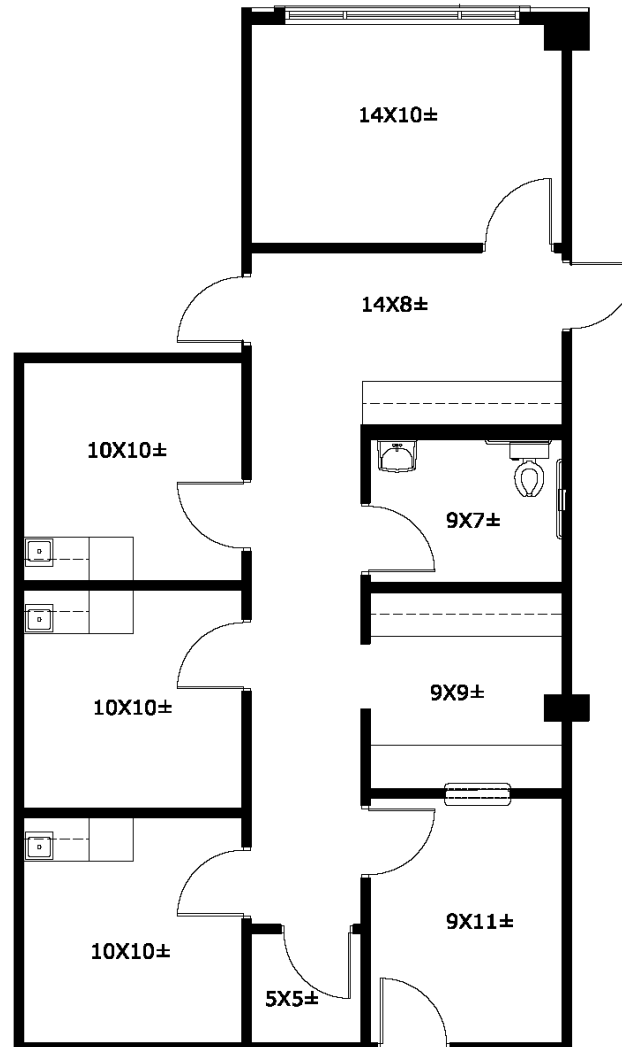
**WELLTOWER LEASING**

833.275.9355

leasing@welltower.com

# FLOOR PLANS

welltower



340

Floor Plan Information

**WELLTOWER LEASING**

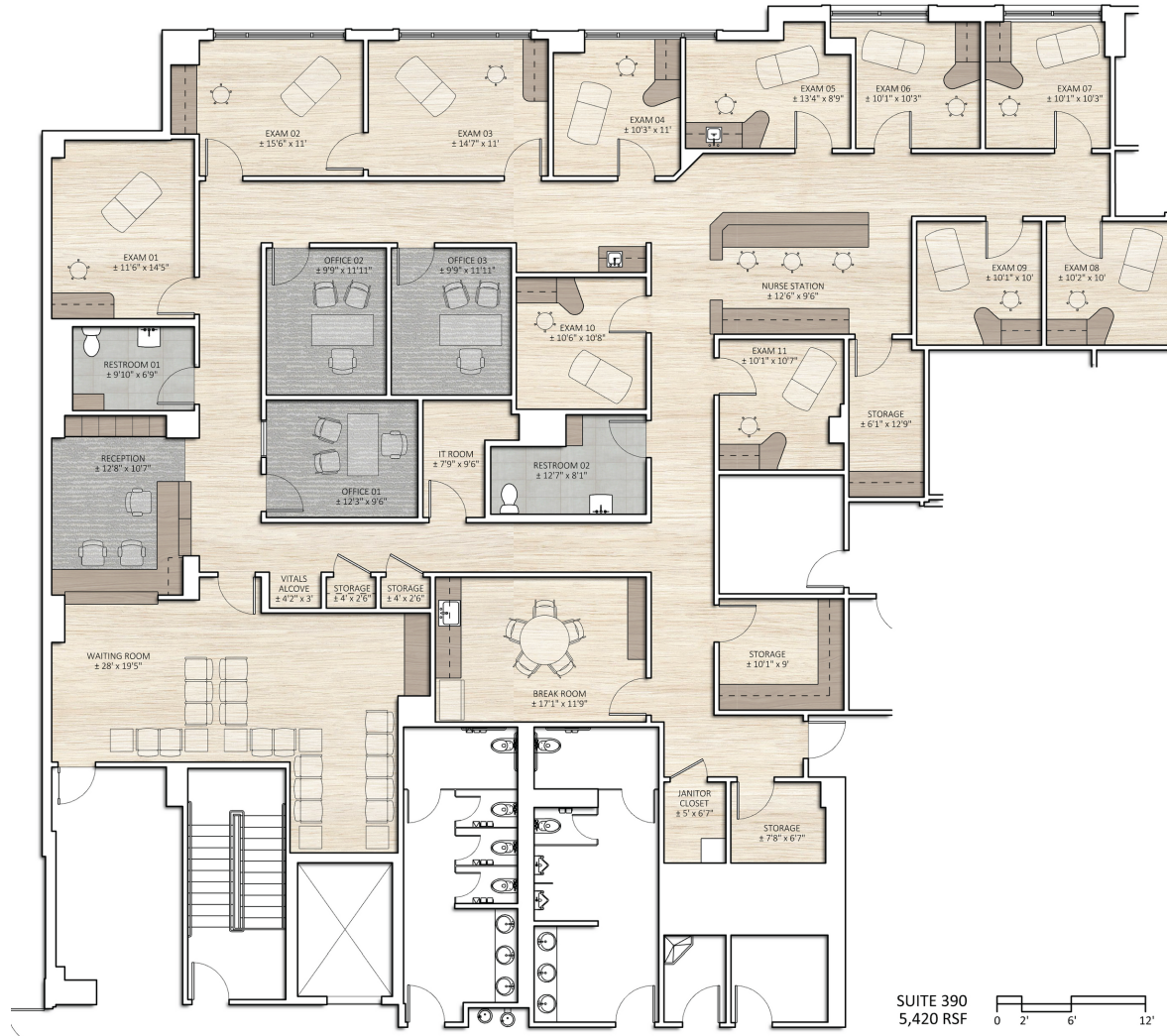
833.275.9355

leasing@welltower.com



# FLOOR PLANS

welltower



390

Floor Plan Information

**WELLTOWER LEASING**

833.275.9355

leasing@welltower.com

# FLOOR PLANS

welltower



## EXTRA

Floor Plan Information

**WELLTOWER LEASING**

833.275.9355

[leasing@welltower.com](mailto:leasing@welltower.com)