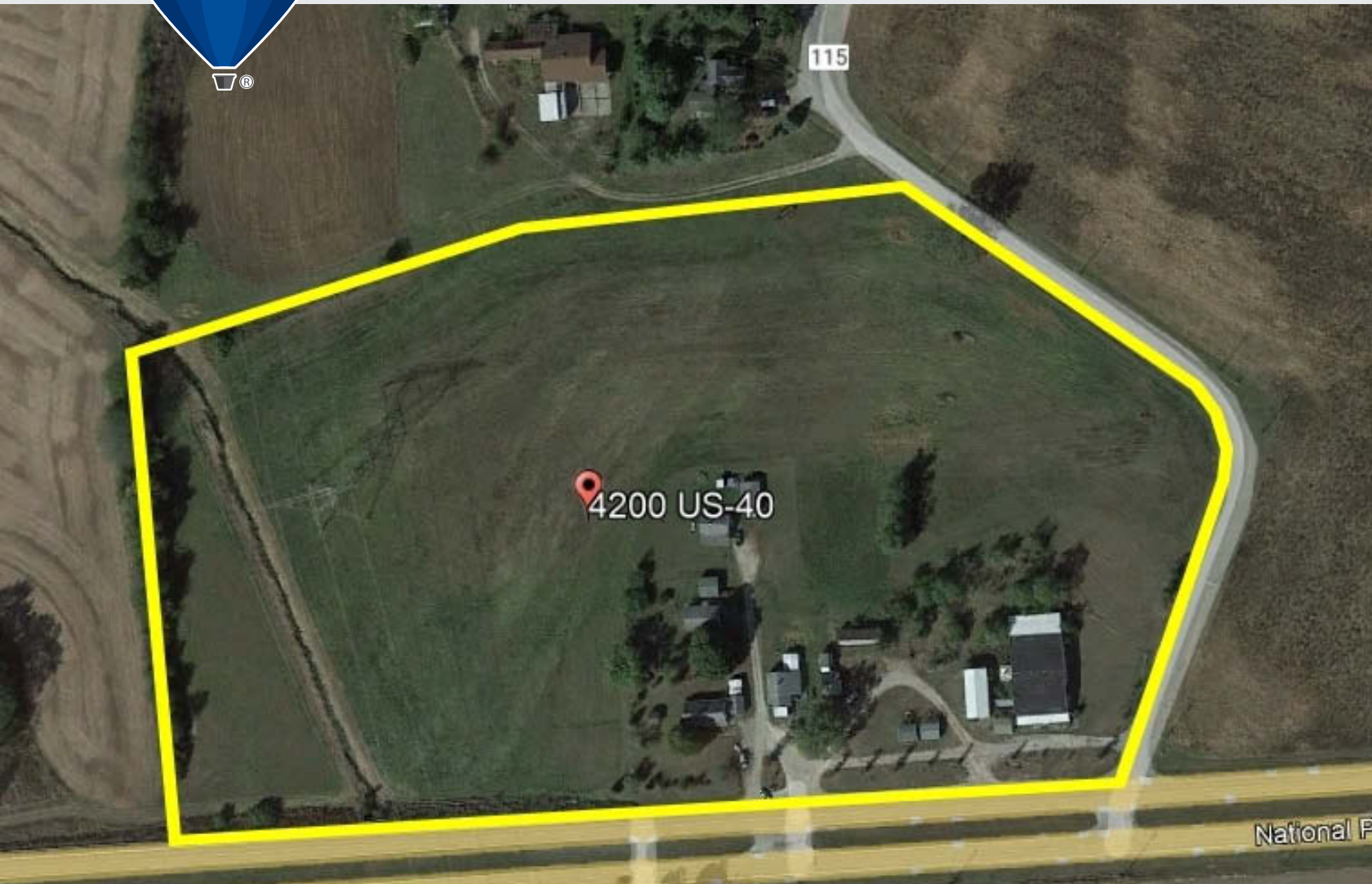




Commercial Development Opportunity!

4200-4280 US 40 NE, London, Ohio 43140 | **\$1,250,000**



17.7 ac with over 1,000' frontage on US 40

- 17.7 ac
- 1,082' frontage on US 40
- Zoned A1/C2 (Ag/Comm)
- Located at Byerly Road
- Parcel # 05-00270.000
- Parcel # 05-00270.001
- 4 miles to I-70
- 17 miles to I-70 / I-270
- 30 min to Port Columbus
- 40 min to Rickenbacker Int
- Possible tax abatement
- 4,110 AADT (2020 ODOT)

Prime development opportunity located next to the I-70 Logistics Center at West Jefferson! 17.7 acres with 1,082' frontage on US 40. Potential to straighten and cure the functional obsolescence of the current route of Byerly Road around the subject property.

Liz Finchum / Kirk Douglass, Broker / Realtor®

(614) 314-5727 Kirk
(614) 949-1366 Liz
kirk@dgremax.com
Lizsellslondon@gmail.com



RE/MAX LEADING EDGE



©2021 RE/MAX, LLC. Each Office Independently Owned and Operated.

117 W High St, Suite 101, London, OH 43140
(740) 852-3555

