

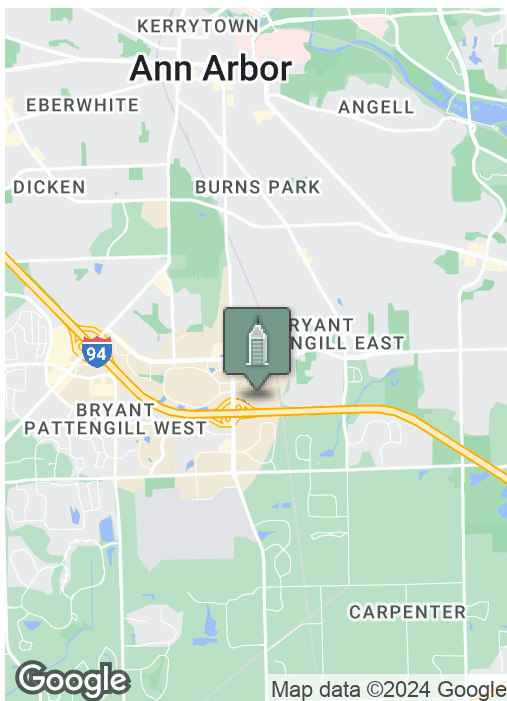
Ann Arbor Office for Sublease

900 VICTORS WAY, ANN ARBOR, MI 48108



Swisher
COMMERCIAL

**FOR
SUBLEASE**



SUMMARY

Lease Rate:

\$14.00 SF/yr
Plus Utilities

Available SF:

Building Size:

72,300 SF

Zoning:

Office

PROPERTY OVERVIEW

Nice third floor office suite with 7 private offices, conference room and kitchenette. Windows on three sides of the suite. Ample free parking.

Located on south side of Ann Arbor immediately off the I-94 - State Street interchange, between I-94 and Eisenhower Parkway. Across from Briarwood Mall and adjacent to business, hospitality and office areas.

***Building
relationships.***

208 East Washington Street Ann Arbor, MI 48104

734.663.0501

Randy Maas

734.222.7525

RMAAS@SWISHERCOMMERCIAL.COM

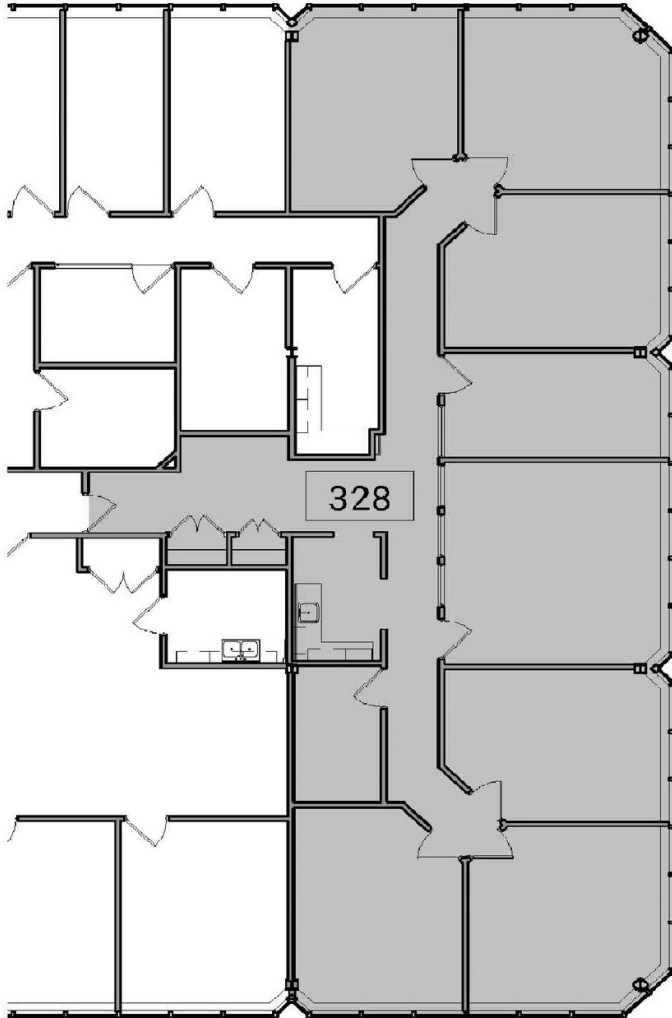
SWISHERCOMMERCIAL.COM

Ann Arbor Office for Sublease

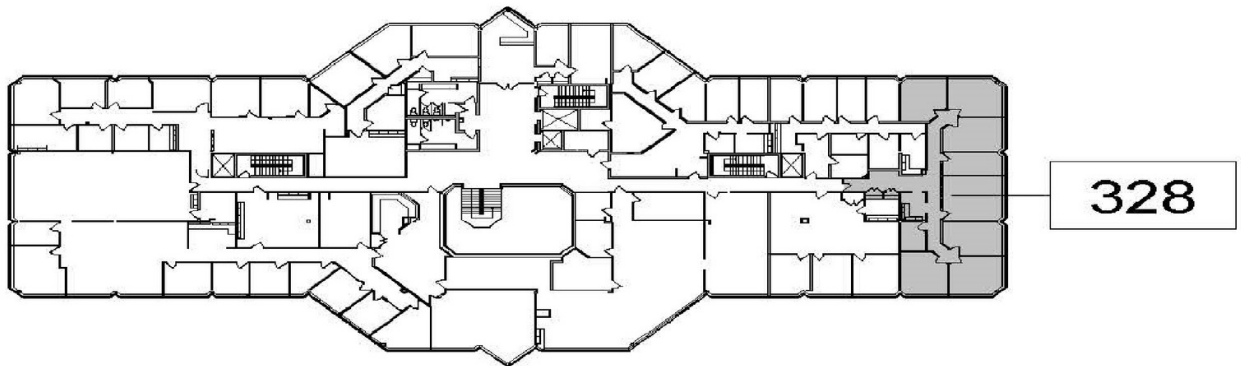
900 VICTORS WAY, ANN ARBOR, MI 48108



Swisher
COMMERCIAL



**900 Victors Way
Suite 328
Ann Arbor
2,532 SF**



***Building
relationships.***

208 East Washington Street Ann Arbor, MI 48104

734.663.0501

Randy Maas

734.222.7525

RMAAS@SWISHERCOMMERCIAL.COM

SWISHERCOMMERCIAL.COM

Ann Arbor Office for Sublease

900 VICTORS WAY, ANN ARBOR, MI 48108



***Building
relationships.***

208 East Washington Street Ann Arbor, MI 48104

734.663.0501

Randy Maas

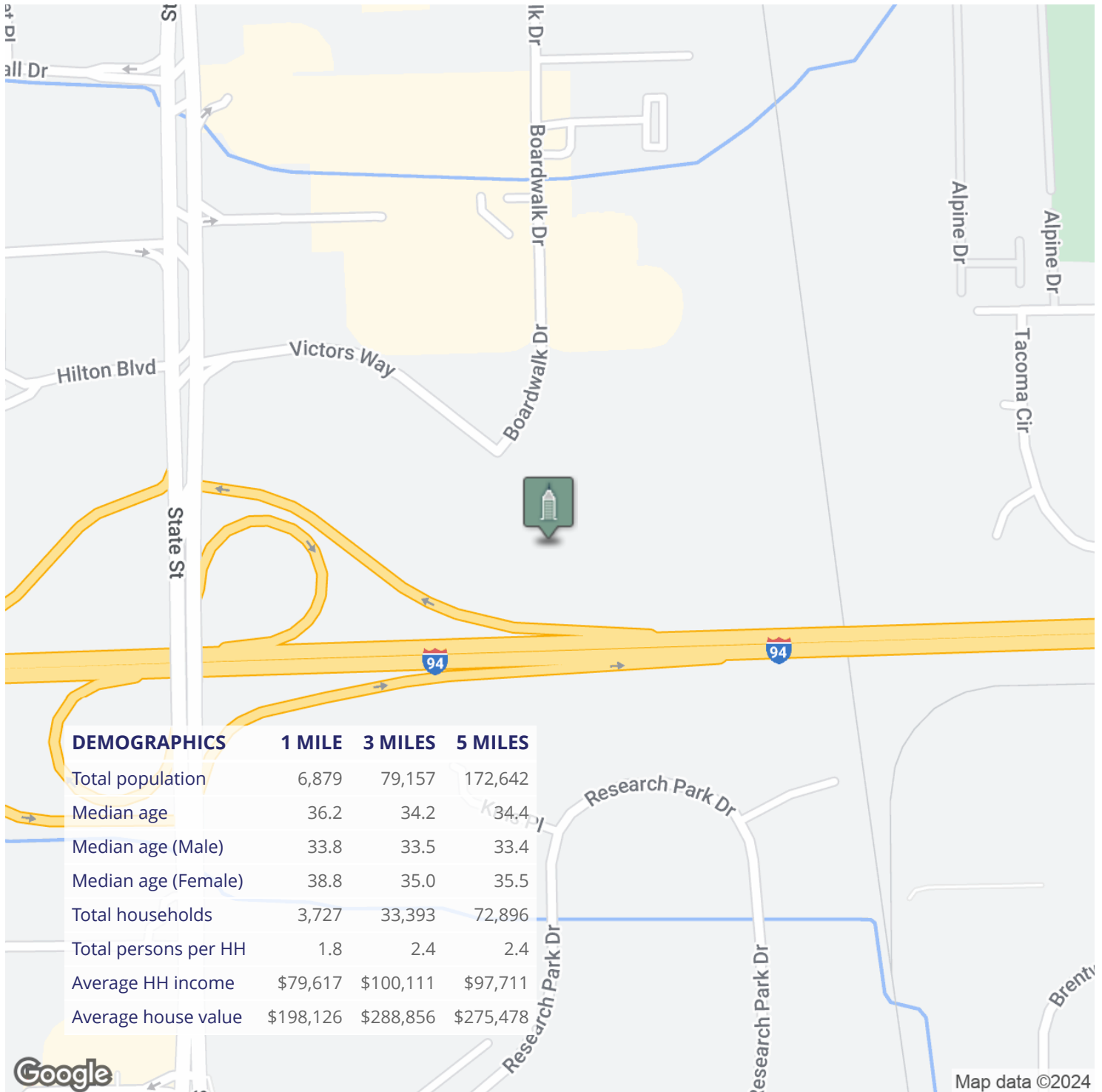
734.222.7525

RMAAS@SWISHERCOMMERCIAL.COM

SWISHERCOMMERCIAL.COM

Ann Arbor Office for Sublease

900 VICTORS WAY, ANN ARBOR, MI 48108



***Building
relationships.***

208 East Washington Street Ann Arbor, MI 48104

734.663.0501

Randy Maas

734.222.7525

RMAAS@SWISHERCOMMERCIAL.COM

SWISHERCOMMERCIAL.COM