

**welltower**

MEDICAL OFFICE SPACE  
**FOR LEASE**

Click or Scan Below



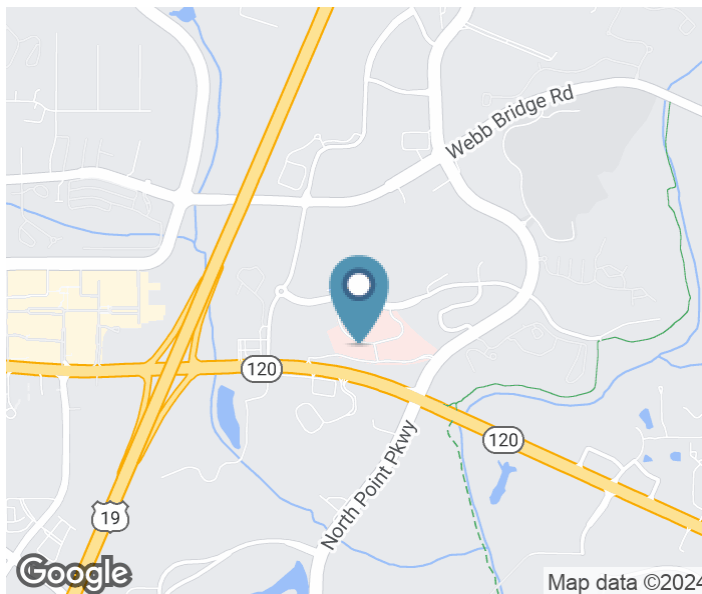
*For Information:*

**WELLTOWER LEASING**  
833.275.9355  
[leasing@welltower.com](mailto:leasing@welltower.com)

**Northside Alpharetta II**  
3400-C OLD MILTON PARKWAY | ALPHARETTA, GA

[medicaloffice.welltower.com](http://medicaloffice.welltower.com)

# EXECUTIVE SUMMARY



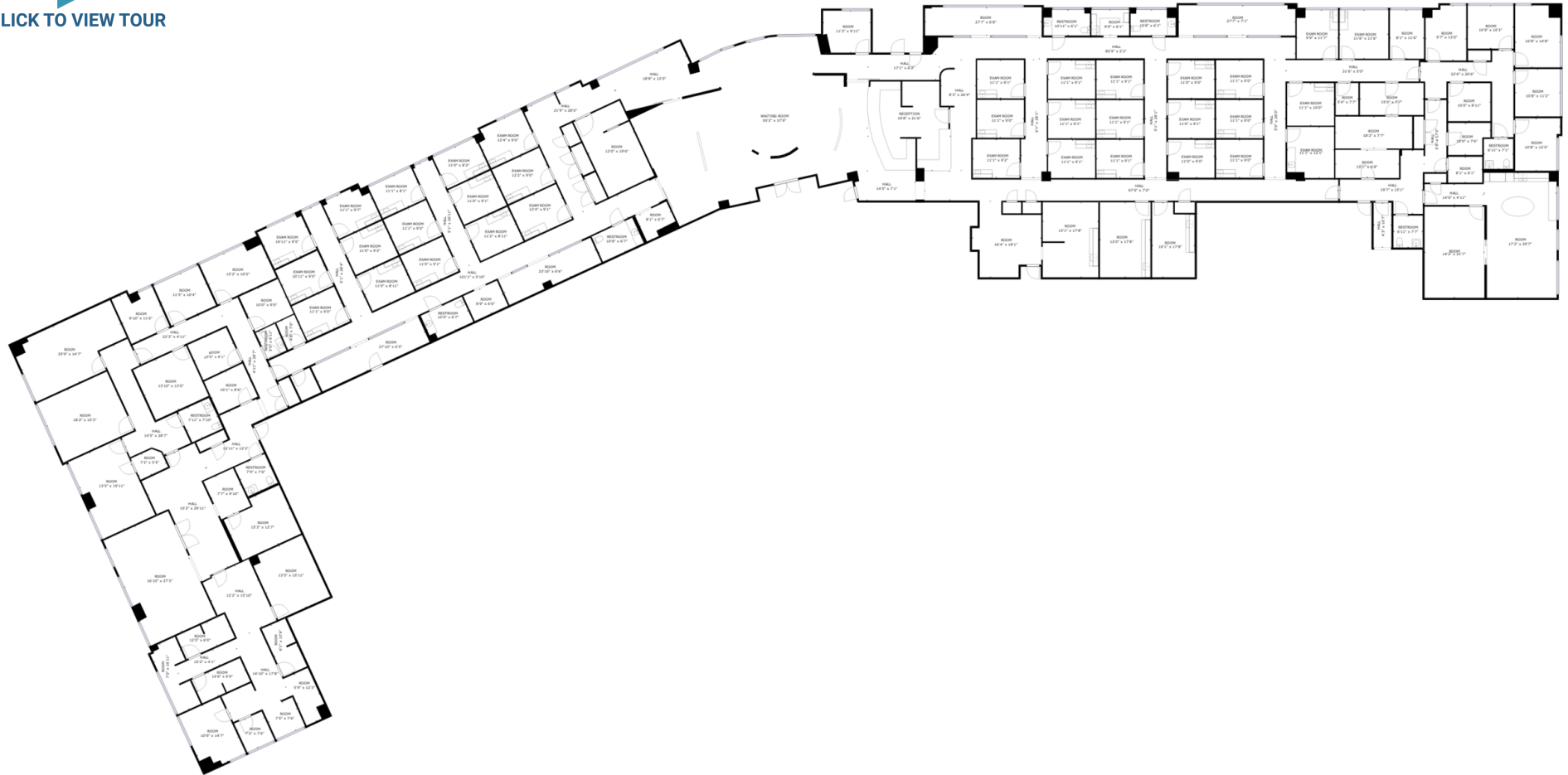
## Location Description

Conveniently located just east of Georgia State Route 400.

## Property Highlights

- Home to Northside Hospital's outpatient imaging center and several Northside Hospital multi-specialty groups
- Current tenant mix includes family practice, gastroenterology, pediatrics, dermatology, orthopedics, OB/GYN, oral and facial surgery and urology
- On-site property management

**welltower**



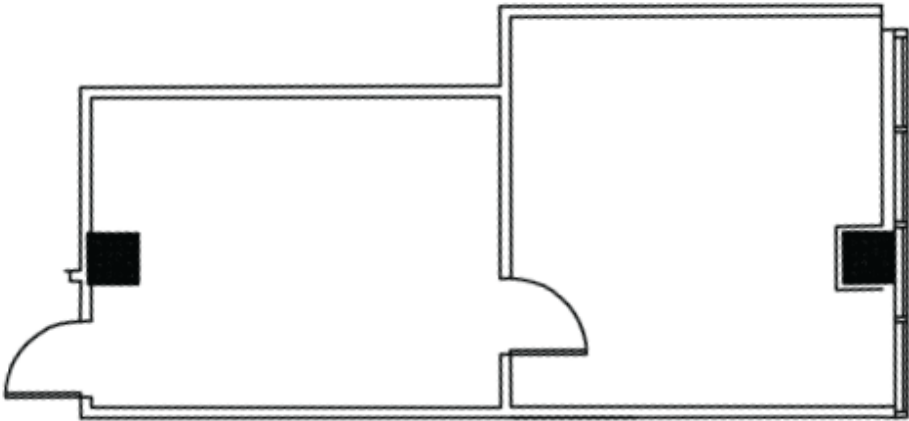
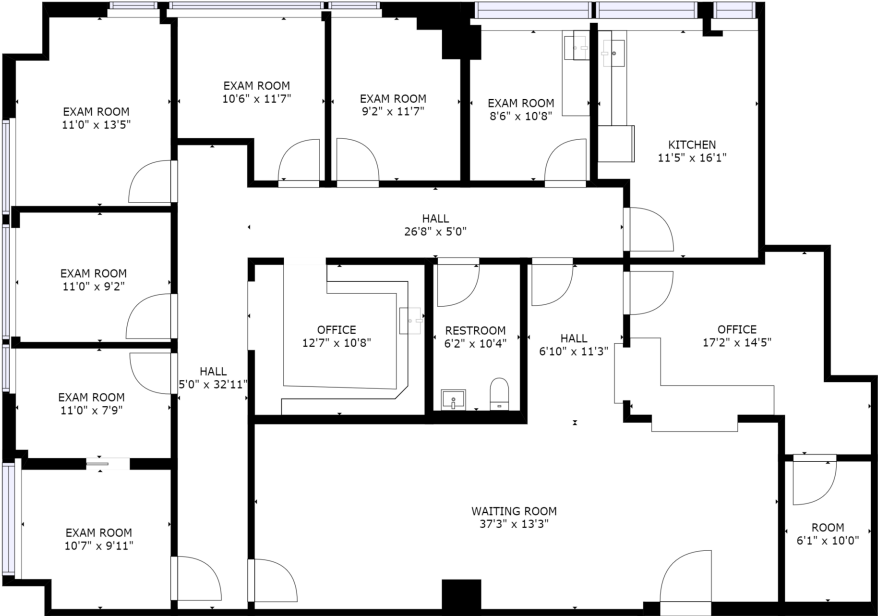
**WELLTOWER LEASING**  
833.275.9355  
leasing@welltower.com





# FLOOR PLANS

welltower



285

2,600 RSF

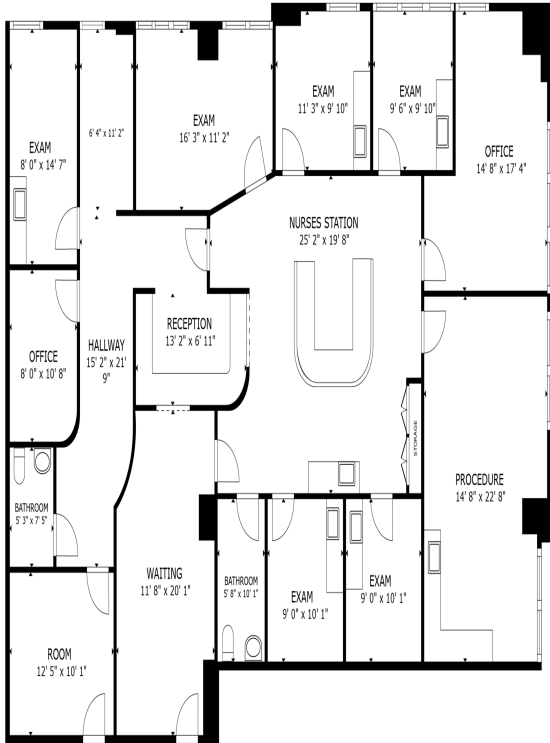
WELLTOWER LEASING  
833.275.9355  
leasing@welltower.com

315

790 RSF

# FLOOR PLANS

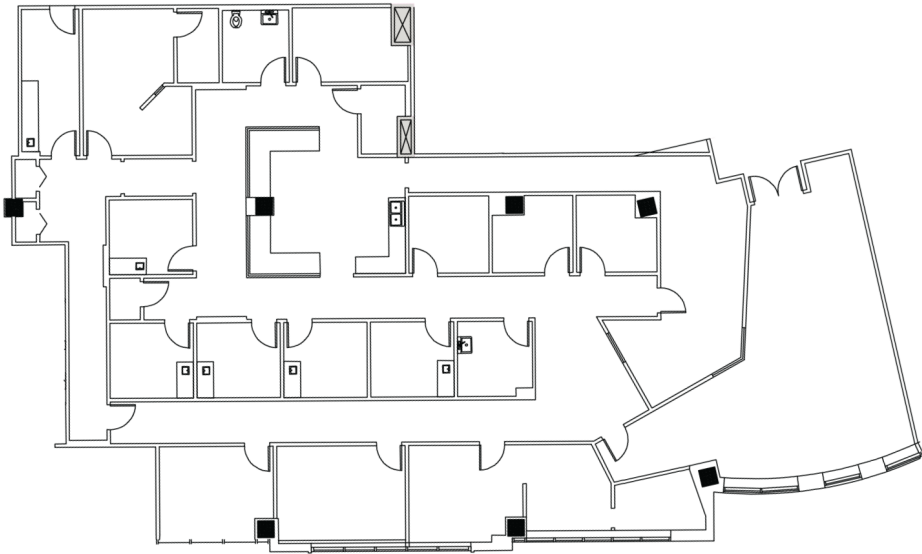
welltower



325

3,130 RSF

WELLTOWER LEASING  
833.275.9355  
leasing@welltower.com



345

5,898 RSF

WELLTOWER LEASING  
833.275.9355  
leasing@welltower.com

# FLOOR PLANS

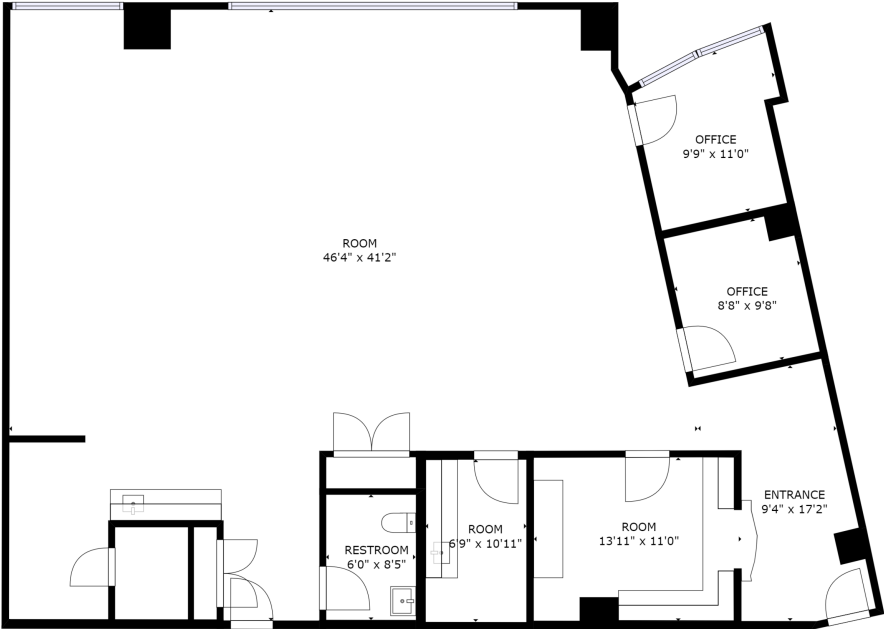
welltower



370

2,130 RSF

**WELLTOWER LEASING**  
833.275.9355  
leasing@welltower.com

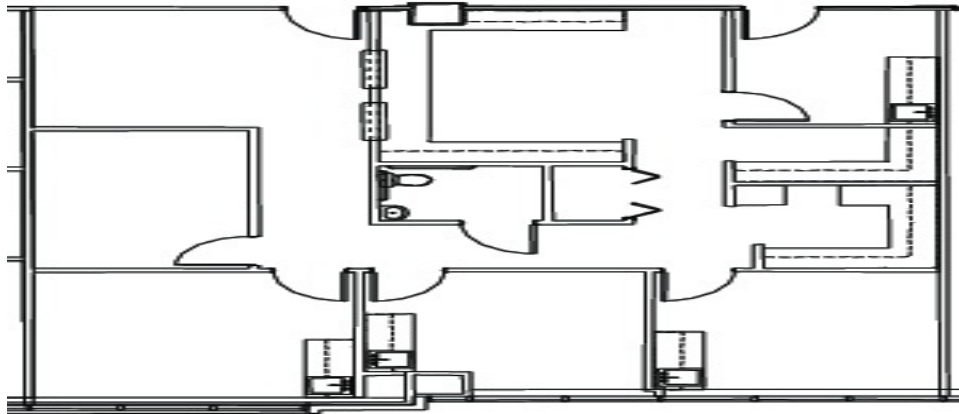


390

1,776 RSF

# FLOOR PLANS

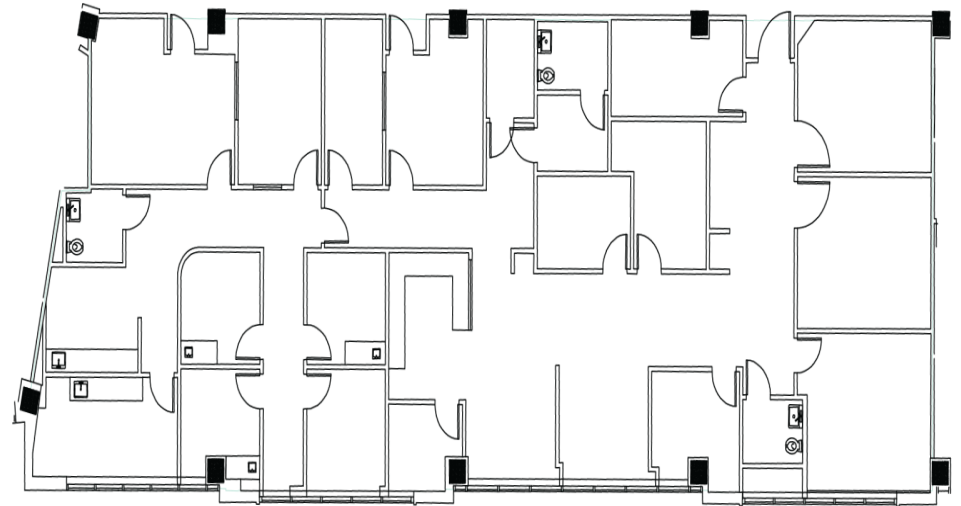
welltower



435

5,104 RSF


**WELLTOWER LEASING**  
833.275.9355  
leasing@welltower.com



535

6,567 RSF

**360°**  
CLICK TO VIEW TOUR



360°  
CLICK TO VIEW TOUR





# DEMOGRAPHICS MAP & REPORT



Population	1 Mile	3 Miles	5 Miles
Total Population	6,500	63,902	158,705
Average Age	32.6	35.1	35.3
Average Age (Male)	31.2	34.1	34.5
Average Age (Female)	33.5	35.6	35.9

Households & Income	1 Mile	3 Miles	5 Miles
Total Households	2,453	24,580	58,626
# of Persons per HH	2.6	2.6	2.7
Average HH Income	\$118,464	\$112,270	\$113,955
Average House Value	\$434,776	\$385,472	\$356,333

\* Demographic data derived from 2020 ACS - US Census

