

OFFICE PROPERTY // FOR LEASE

## PROFESSIONAL OFFICE SUITE IN DOWNTOWN NORTHVILLE

115 NORTH CENTER STREET  
NORTHVILLE, MI 48167



- Suite has 4 private offices, 1 conference room, small kitchenette and a lobby
- Charming historic architecture with exposed brick accents
- Easy and accessible building entrances
- Abundance of natural light for a welcoming and bright ambiance
- Cooperative marketing effort via the Downtown Development Authority
- Rear public parking lot
- Exterior signage available

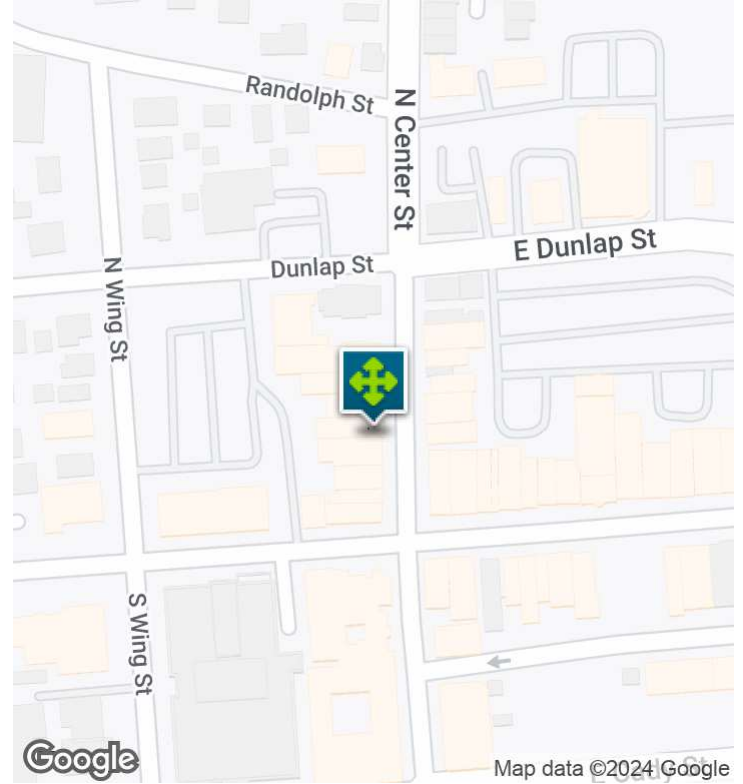


**P.A. COMMERCIAL**  
Corporate & Investment Real Estate

26555 Evergreen Road, Suite 1500  
Southfield, MI 48076  
248.358.0100  
[pacommercial.com](http://pacommercial.com)

We obtained the information above from sources we believe to be reliable. However, we have not verified its accuracy and make no guarantee, warranty or representation about it. It is submitted subject to the possibility of errors, omissions, change of price, rental or other conditions, prior sale, lease or financing, or withdrawal without notice. We include projections, opinions, assumptions or estimates for example only, and they may not represent current, past or future performance of the property. You and your tax and legal advisors should conduct your own investigation of the property and transaction.

## EXECUTIVE SUMMARY



### OFFERING SUMMARY

<b>Lease Rate:</b>	\$20.00 SF/yr (NNN)
<b>Building Size:</b>	13,600 SF
<b>Available SF:</b>	1,771 SF
<b>Lot Size:</b>	0.2 Acres
<b>Year Built:</b>	1940
<b>Zoning:</b>	CBD
<b>Market:</b>	Detroit
<b>Submarket:</b>	Southern I-275 Corridor
<b>Traffic Count:</b>	8,093

### PROPERTY OVERVIEW

A charming historic building with exposed brick in Downtown Northville currently has 1,771 SF available. The suite consists of 4 private offices, 1 conference room, small kitchenette and a reception/lobby area. The building can be accessed from either N Center St. or the rear public parking lot with exterior signage available.

### LOCATION OVERVIEW

Ideally situated in the bustling heart of Northville, MI, The Veranda Center offers a prime location for businesses seeking a vibrant and dynamic environment. Surrounded by a mix of trendy boutiques, cafes, and restaurants, tenants will find an array of options for dining and entertainment just steps away.

### PROPERTY HIGHLIGHTS

- Charming historic architecture with exposed brick accents
- Abundance of natural light for a welcoming and bright ambiance
- Cooperative marketing effort via the Downtown Development Authority
- Rear public parking lot
- Exterior signage available



**P.A. COMMERCIAL**  
Corporate & Investment Real Estate

**Matthew Schiffman** CEO/MANAGING MEMBER  
D: 248.281.9907 | C: 248.281.9907  
matt@pacommercial.com

**Mike Gunn** SENIOR ASSOCIATE  
D: 248.331.0202 | C: 248.924.7499  
mike@pacommercial.com

115 NORTH CENTER STREET, NORTHVILLE, MI 48167 // FOR LEASE

## LEASE SPACES



### LEASE INFORMATION

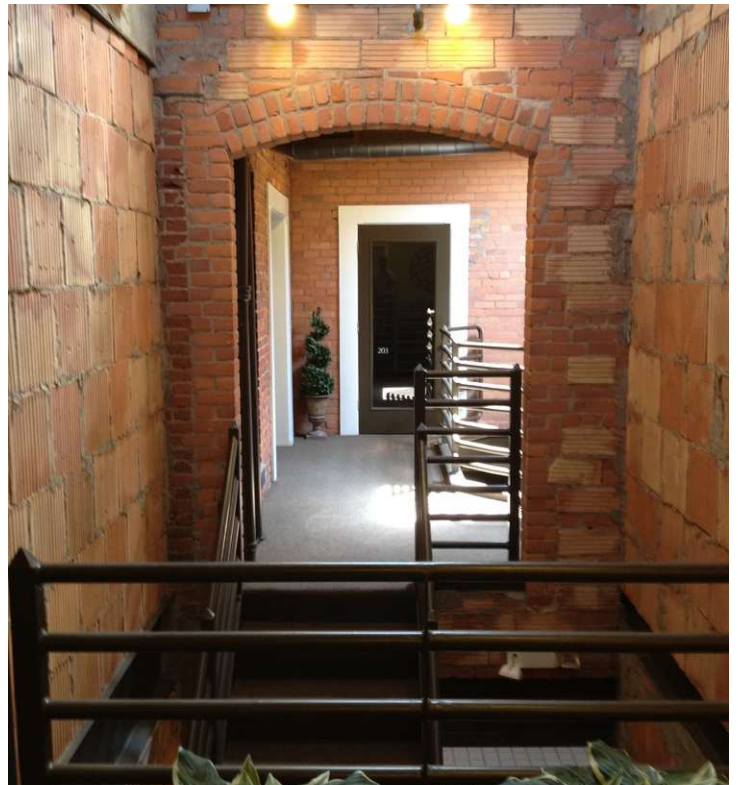
Lease Type:	NNN	Lease Term:	Negotiable
Total Space:	1,771 SF	Lease Rate:	\$20.00 SF/yr

### AVAILABLE SPACES

SUITE	TENANT	SIZE (SF)	LEASE TYPE	LEASE RATE	DESCRIPTION
115 N Center St, Suite 200	Available	1,771 SF	NNN	\$20.00 SF/yr	-

115 NORTH CENTER STREET, NORTHVILLE, MI 48167 // FOR LEASE

## ADDITIONAL PHOTOS



**P.A. COMMERCIAL**  
Corporate & Investment Real Estate

**Matthew Schiffman** CEO/MANAGING MEMBER  
D: 248.281.9907 | C: 248.281.9907  
matt@pacommercial.com

**Mike Gunn** SENIOR ASSOCIATE  
D: 248.331.0202 | C: 248.924.7499  
mike@pacommercial.com

We obtained the information above from sources we believe to be reliable. However, we have not verified its accuracy and make no guarantee, warranty or representation about it. It is submitted subject to the possibility of errors, omissions, change of price, rental or other conditions, prior sale, lease or financing, or withdrawal without notice. We include projections, opinions, assumptions or estimates for example only, and they may not represent current, past or future performance of the property. You and your tax and legal advisors should conduct your own investigation of the property and transaction.

115 NORTH CENTER STREET, NORTHVILLE, MI 48167 // FOR LEASE

## RETAILER MAP



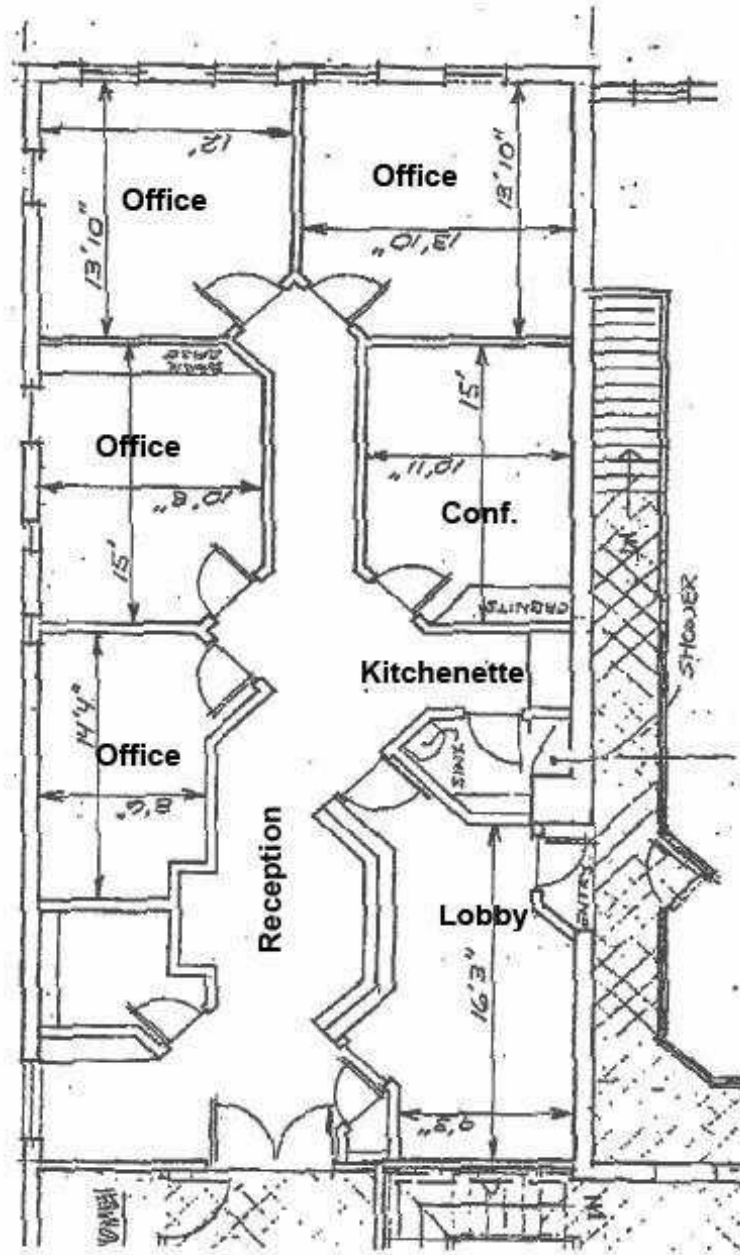
**Matthew Schiffman** CEO/MANAGING MEMBER  
D: 248.281.9907 | C: 248.281.9907  
matt@pacommercial.com

**Mike Gunn** SENIOR ASSOCIATE  
D: 248.331.0202 | C: 248.924.7499  
mike@pacommercial.com

We obtained the information above from sources we believe to be reliable. However, we have not verified its accuracy and make no guarantee, warranty or representation about it. It is submitted subject to the possibility of errors, omissions, change of price, rental or other conditions, prior sale, lease or financing, or withdrawal without notice. We include projections, opinions, assumptions or estimates for example only, and they may not represent current, past or future performance of the property. You and your tax and legal advisors should conduct your own investigation of the property and transaction.

115 NORTH CENTER STREET, NORTHVILLE, MI 48167 // FOR LEASE

## FLOOR PLANS



**P.A. COMMERCIAL**  
Corporate & Investment Real Estate

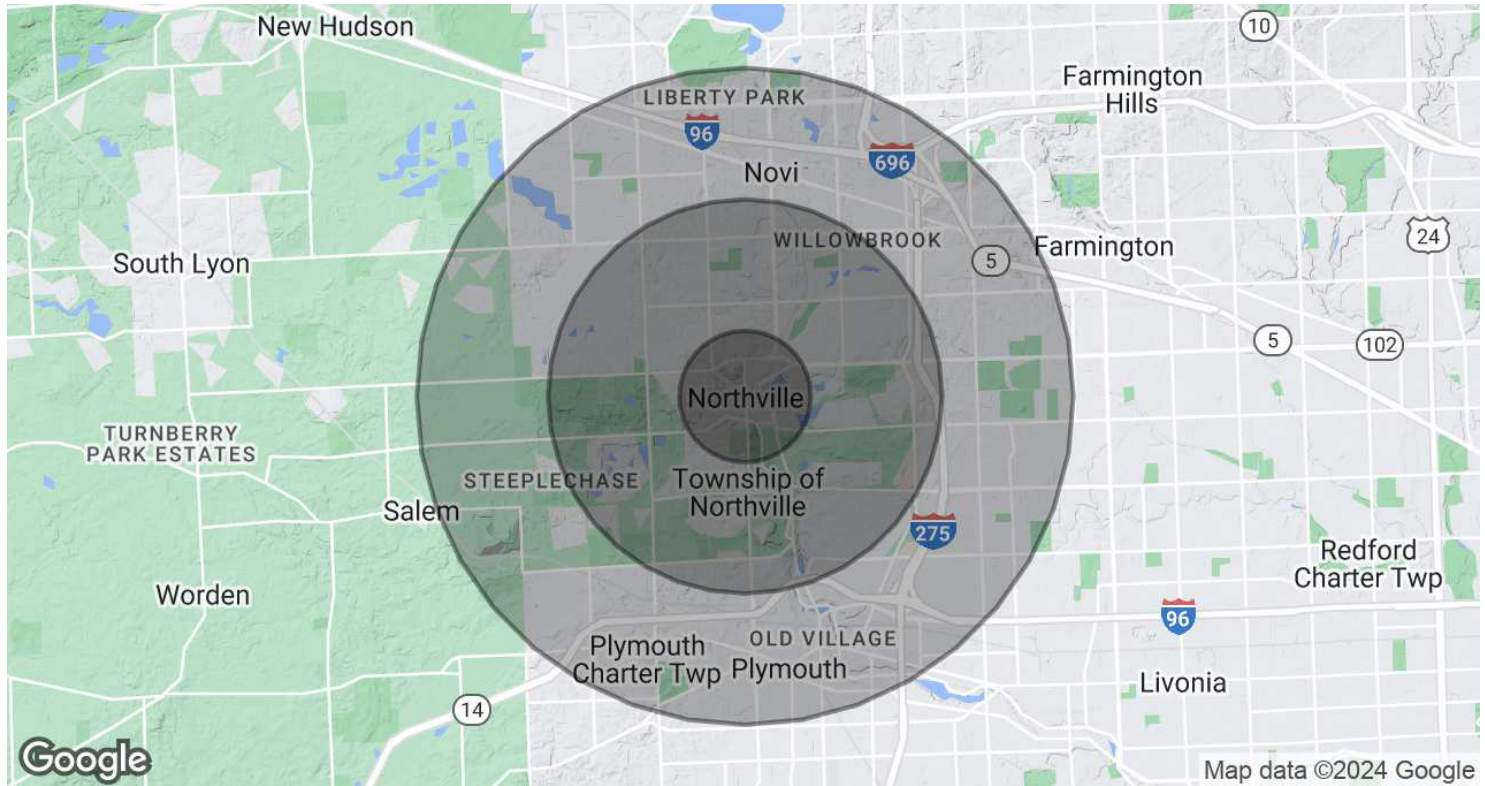
**Matthew Schiffman** CEO/MANAGING MEMBER  
D: 248.281.9907 | C: 248.281.9907  
matt@pacommercial.com

**Mike Gunn** SENIOR ASSOCIATE  
D: 248.331.0202 | C: 248.924.7499  
mike@pacommercial.com

We obtained the information above from sources we believe to be reliable. However, we have not verified its accuracy and make no guarantee, warranty or representation about it. It is submitted subject to the possibility of errors, omissions, change of price, rental or other conditions, prior sale, lease or financing, or withdrawal without notice. We include projections, opinions, assumptions or estimates for example only, and they may not represent current, past or future performance of the property. You and your tax and legal advisors should conduct your own investigation of the property and transaction.

115 NORTH CENTER STREET, NORTHVILLE, MI 48167 // FOR LEASE

## DEMOGRAPHICS MAP & REPORT



POPULATION	1 MILE	3 MILES	5 MILES
Total Population	8,060	55,590	140,600
Average Age	44.2	41.5	41.3
Average Age (Male)	41.3	39.8	39.7
Average Age (Female)	46.1	43.0	42.7

HOUSEHOLDS & INCOME	1 MILE	3 MILES	5 MILES
Total Households	3,454	21,604	54,839
# of Persons per HH	2.3	2.6	2.6
Average HH Income	\$110,719	\$121,647	\$111,905
Average House Value	\$343,617	\$362,335	\$319,159

\* Demographic data derived from 2020 ACS - US Census

115 NORTH CENTER STREET, NORTHVILLE, MI 48167 // FOR LEASE

CONTACT US



FOR MORE INFORMATION, PLEASE CONTACT:



**Matthew Schiffman**  
CEO/MANAGING MEMBER

**D:** 248.281.9907  
**C:** 248.281.9907  
matt@pacommercial.com



**Mike Gunn**  
SENIOR ASSOCIATE

**D:** 248.331.0202  
**C:** 248.924.7499  
mike@pacommercial.com

**P.A. Commercial**

26555 Evergreen Road, Suite 1500  
Southfield, MI 48076

**P:** 248.358.0100

**F:** 248.358.5300

[pacommercial.com](http://pacommercial.com)

Follow Us!



**P.A. COMMERCIAL**  
Corporate & Investment Real Estate

We obtained the information above from sources we believe to be reliable. However, we have not verified its accuracy and make no guarantee, warranty or representation about it. It is submitted subject to the possibility of errors, omissions, change of price, rental or other conditions, prior sale, lease or financing, or withdrawal without notice. We include projections, opinions, assumptions or estimates for example only, and they may not represent current, past or future performance of the property. You and your tax and legal advisors should conduct your own investigation of the property and transaction.