

25420 SW Grahams Ferry Road
SHERWOOD, OR 97140

Yard 7

Yard 9

Tyler Dean
503.972.7278
tyler@macadamforbes.com
Licensed in OR

2 Centerpointe Drive, Suite 500 | Lake Oswego, OR 97035 | WWW.MACADAMFORBES.COM | 503.227.2500

All of the information contained herein was obtained either from the owner or other parties we consider reliable. We have no reason to doubt its accuracy, however we do not guarantee it.

FOR LEASE

 **MACADAM
FORBES**
COMMERCIAL REAL ESTATE SERVICES

FOR LEASE

25420 SW Grahams Ferry Road, Sherwood, OR 97140



PROPERTY DESCRIPTION

Combination of up to 1.75 acres fenced, graveled yard and a 2,800 SF shop including 500 SF of office space.

LOCATION DESCRIPTION

Located one mile west of the North Wilsonville Exit off Interstate 5.

PROPERTY HIGHLIGHTS

- Great contractor yard
- 5-bay shop
- Close proximity to I-5
- Water and power on site
- New gravel throughout site

OFFERING SUMMARY

Lease Rate:	\$3,450.00 - 8,250.00 per month (NNN)
Available Building SF:	2,800
Yard 7 Total Land:	55,000 SF
Yard 9 Total Land:	23,000 SF
Zoning:	FD-20

SPACES

	LEASE RATE	SPACE SIZE
25420 SW Grahams Ferry Rd (Yard 7)	\$8,250 per month	2,800 SF
25420 SW Grahams Ferry Rd (Yard 9)	\$3,450 per month	23,000 SF



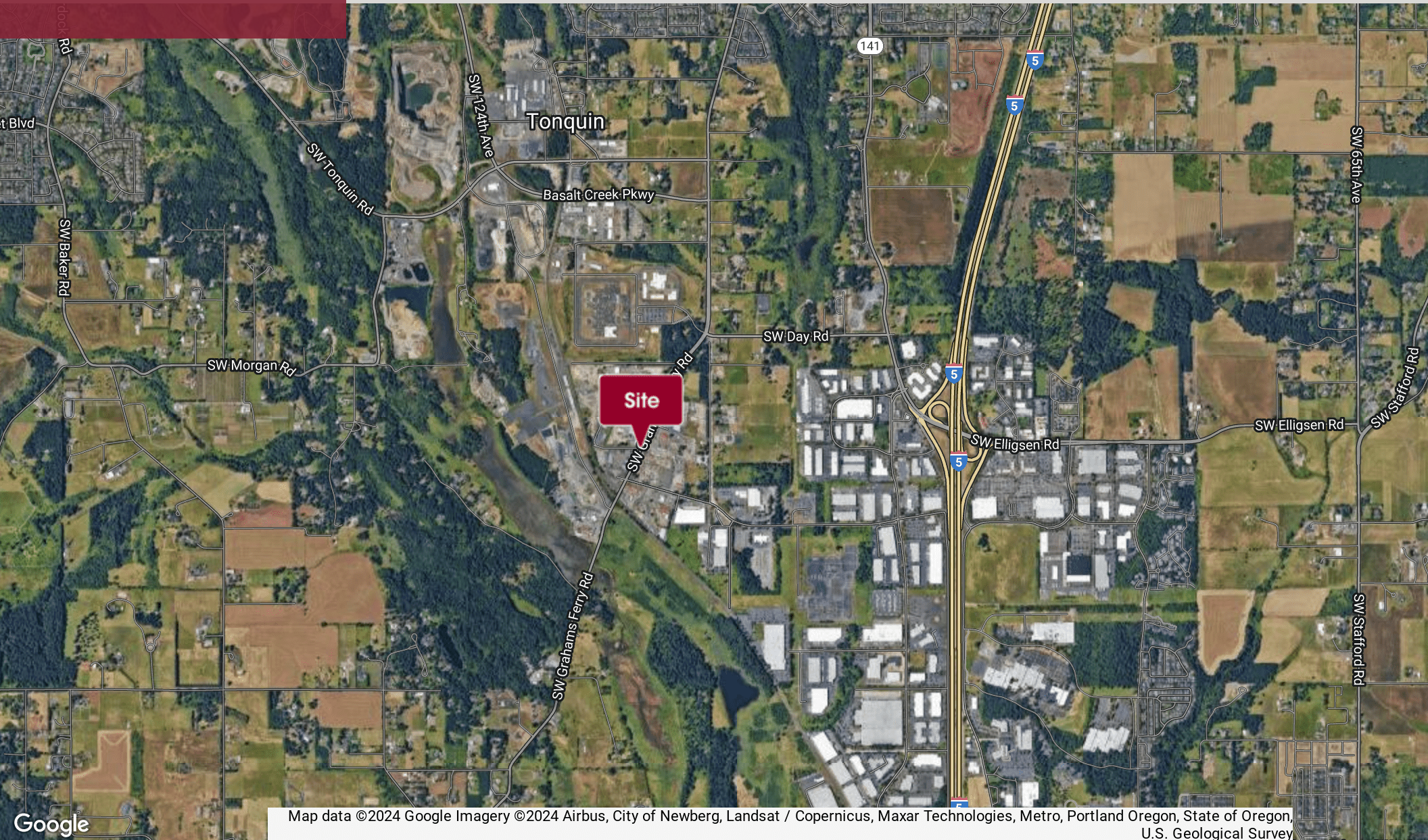
Tyler Dean
503.972.7278
tyler@macadamforbes.com
Licensed in OR

All of the information contained herein was obtained either from the owner or other parties we consider reliable. We have no reason to doubt its accuracy, however we do not guarantee it.

MACADAMFORBES.COM | 503.227.2500

FOR LEASE

25420 SW Grahams Ferry Road, Sherwood, OR 97140



Tyler Dean
503.972.7278
tyler@macadamforbes.com
Licensed in OR

All of the information contained herein was obtained either from the owner or other parties we consider reliable. We have no reason to doubt its accuracy, however we do not guarantee it.

MACADAMFORBES.COM | 503.227.2500