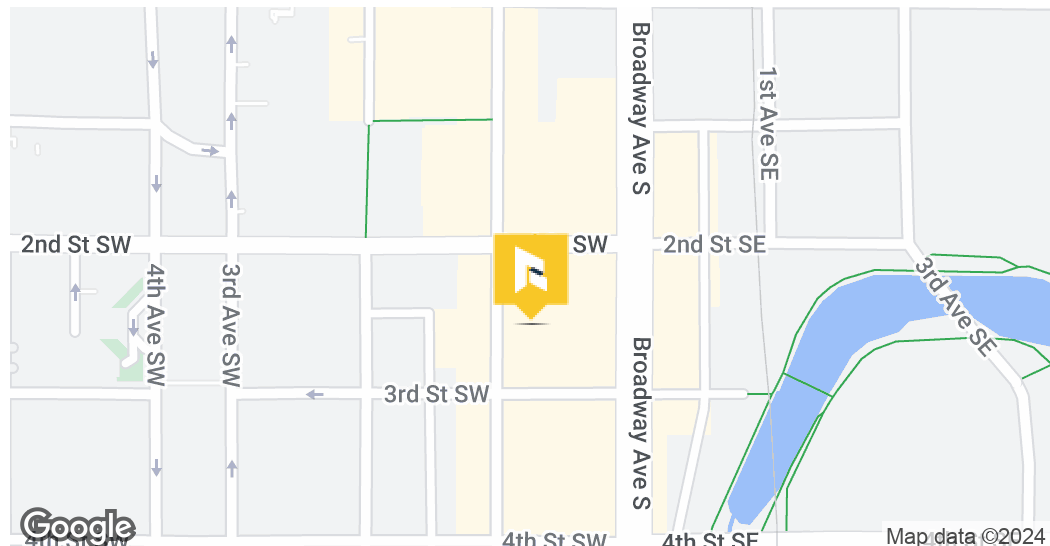


218 1ST AVE SW

Coworking / Executive Offices in Downtown Rochester



Lease Rate

\$800.00 PER MONTH

OFFERING SUMMARY

Building Size:	7,920 SF
Available SF:	100 - 2,670 SF
Lot Size:	2,867 SF
Number of Units:	6
Year Built:	1917
Renovated:	2019
Zoning:	Commercial/Industrial
Market:	Downtown

PROPERTY OVERVIEW

Discover creativity in this office space just blocks from Downtown Rochester. Private offices, a conference room, and a spacious open area feature elegant hardwood floors, a convenient kitchenette, lofty ceilings, and unique lighting fixtures. Parking options include metered or ramp parking, with the potential for reserved spaces upon lease signing. Benefit from flexible leasing options and monthly rates, creating a workspace that seamlessly blends functionality and style. Elevate your work environment in a location that offers both inspiration and convenience.

PROPERTY HIGHLIGHTS

- Creative Space, Private offices available, within blocks of Downtown, conference room, large open shared space, hardwood floors, Kitchenette access, tall ceilings, industrial fixtures, recessed lighting along with unique lighting fixtures throughout, ample metered or ramp parking, reserved parking may be available with a signed lease.

BUCKY BEEMAN

507.951.7130

bucky@rgi-group.com

MATT GOVE

507.951.1147

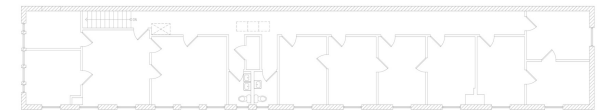
matt@rgi-group.com

416 SOUTH BROADWAY, SUITE #1 | 507.951.7130 | [RGI-GROUP.COM](http://rgi-group.com)



218 1ST AVE SW

Coworking / Executive Offices in Downtown Rochester



BUCKY BEEMAN

507.951.7130

ucky@rgi-group.com

MATT GOVE

507.951.1147

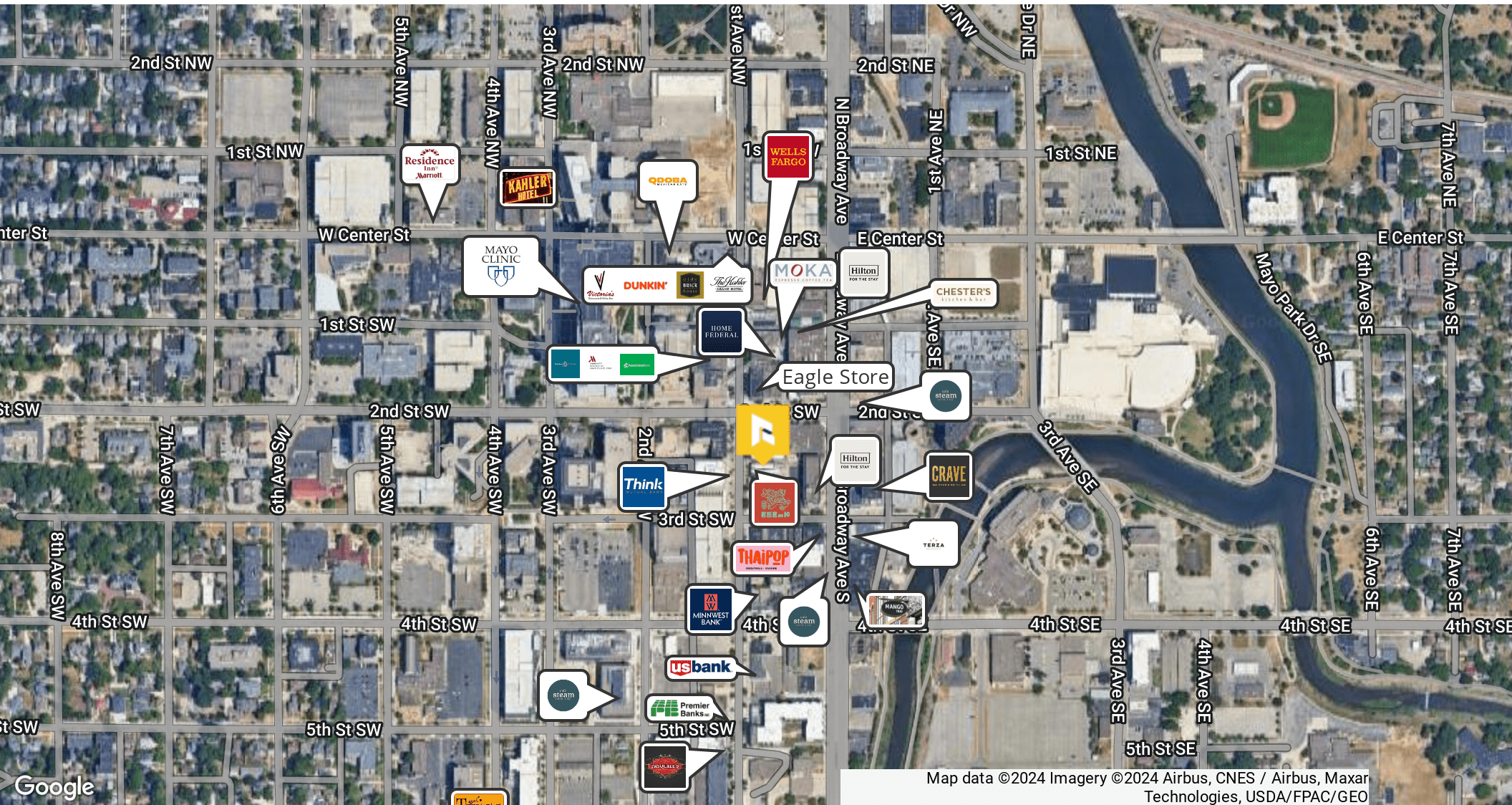
matt@rgi-group.com

416 SOUTH BROADWAY, SUITE #1 | 507.951.7130 | RGI-GROUP.COM



218 1ST AVE SW

Coworking / Executive Offices in Downtown Rochester



BUCKY BEEMAN

507.951.7130

bucky@rgi-group.com

MATT GOVE

507.951.1147

matt@rgi-group.com

416 SOUTH BROADWAY, SUITE #1 | 507.951.7130 | RGI-GROUP.COM



218 1ST AVE SW

Coworking / Executive Offices in Downtown Rochester



BUCKY BEEMAN

Realtor-Developer-Partner

C: 507.951.7130

bucky@rgi-group.com

MN #40149580



MATT GOVE

Agent

C: 507.951.1147

matt@rgi-group.com

MN #40779556

BUCKY BEEMAN

507.951.7130

bucky@rgi-group.com

MATT GOVE

507.951.1147

matt@rgi-group.com