



**FOR SALE
LAND
\$199,500**

19+/- ACRES FUTURE HOMESITE HOUSTON COUNTY, AL

00 MIDDLETON RD, DOTHAN, AL 36301



**CLAY@CROSBYDIRT.COM
CLAY PATRICK
850.693.6610**



**CROSBYDIRT.COM
CORPORATE OFFICE
141 5TH ST. NW SUITE 202
WINTER HAVEN, FL 33881**



PROPERTY DESCRIPTION

If you're looking for a gorgeous piece of property with potential in the highly sought-after Rehobeth School District, then this 18.51 acres could be just what you need! Located on Houston County, there is water available on site and boasting road frontage to boot, it's ideal for building your dream home or even as an opportunity for development. Site built homes only—mobile homes not allowed here!

PROPERTY HIGHLIGHTS

OFFERING SUMMARY

| | |
|-------------|-------------|
| Sale Price: | \$199,500 |
| Lot Size: | 18.51 Acres |

| DEMOGRAPHICS | 1 MILE | 3 MILES | 5 MILES |
|-------------------|----------|----------|----------|
| Total Households | 231 | 3,701 | 14,219 |
| Total Population | 555 | 7,795 | 31,236 |
| Average HH Income | \$49,456 | \$55,034 | \$50,714 |

ID#: 1154030



ID#: 1154030



ID#: 1154030

Clay Patrick
Broker Associate
clay@crosbydirt.com
850.693.6610



crosbydirt.com
Corporate Office
141 5th St. NW Suite 202
Winter Haven, FL 33881

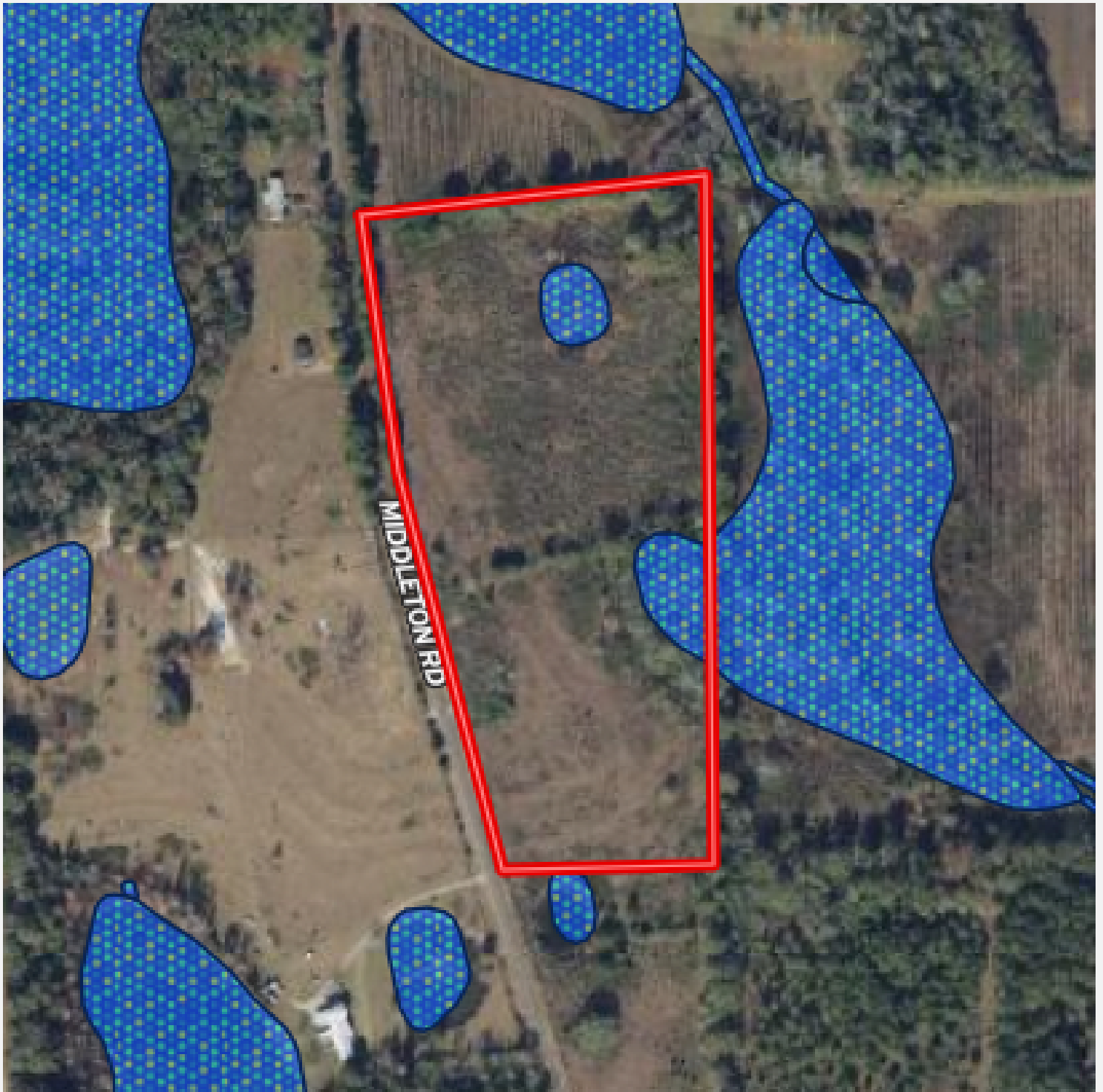


ID#: 1154030

Clay Patrick
Broker Associate
clay@crosbydirt.com
850.693.6610



crosbydirt.com
Corporate Office
141 5th St. NW Suite 202
Winter Haven, FL 33881

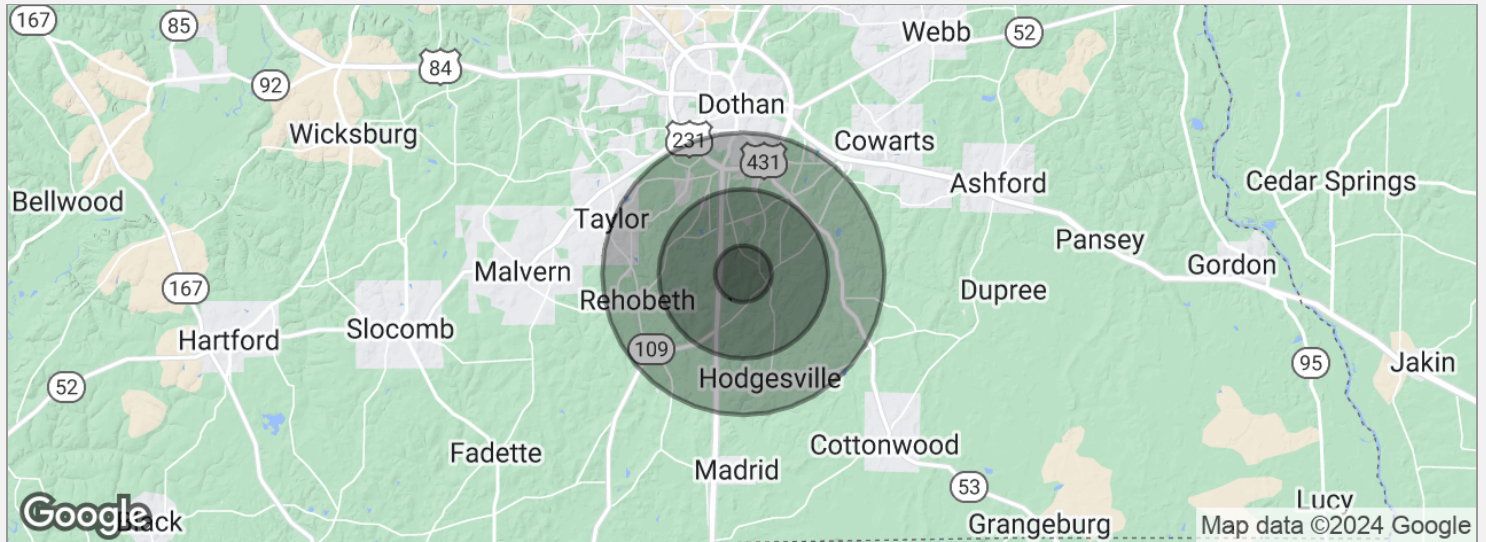


ID#: 1154030

| CODE | DESCRIPTION | ACRES | % | CPI | NCCPI | CAP ? |
|------------|---|-------|--------|-----|-------|-------|
| DoB | Dothan loamy sand, 2 to 5 percent slopes | 7.21 | 40.14% | - | 59 | 2e ? |
| DsA | Dunbar-Goldsboro complex, 0 to 2 percent slopes | 5.02 | 27.95% | - | 68 | 2w ? |
| OrB | Orangeburg sandy loam, 2 to 5 percent slopes | 4.79 | 26.67% | - | 67 | 2e ? |
| MIA | Mantachie, luka, and Kinston soils, 0 to 1 percent slopes, frequently flooded | 0.76 | 4.23% | - | 63 | 5w ? |
| DoA | Dothan loamy sand, 0 to 2 percent slopes | 0.18 | 1% | - | 60 | 2e ? |



ID#: 1154030



POPULATION

| | 1 MILE | 3 MILES | 5 MILES |
|---------------------|--------|---------|---------|
| Total population | 555 | 7,795 | 31,236 |
| Median age | 40.7 | 40.9 | 39.9 |
| Median age (male) | 39.7 | 40.7 | 37.8 |
| Median age (Female) | 41.8 | 41.1 | 41.2 |

HOUSEHOLDS & INCOME

| | 1 MILE | 3 MILES | 5 MILES |
|---------------------|-----------|-----------|-----------|
| Total households | 231 | 3,701 | 14,219 |
| # of persons per HH | 2.4 | 2.1 | 2.2 |
| Average HH income | \$49,456 | \$55,034 | \$50,714 |
| Average house value | \$115,739 | \$134,321 | \$118,434 |

* Demographic data derived from 2020 ACS - US Census

ID#: 1154030