

# 47 Acres in Daphne, AL

CO RD 13 & US-90 DAPHNE, AL 36526

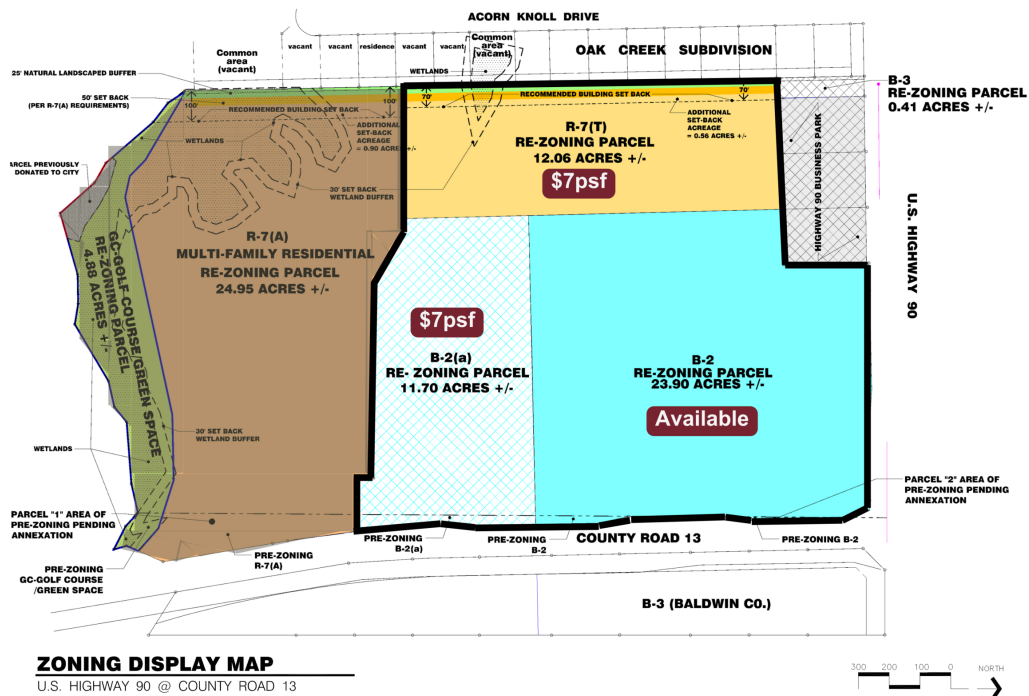
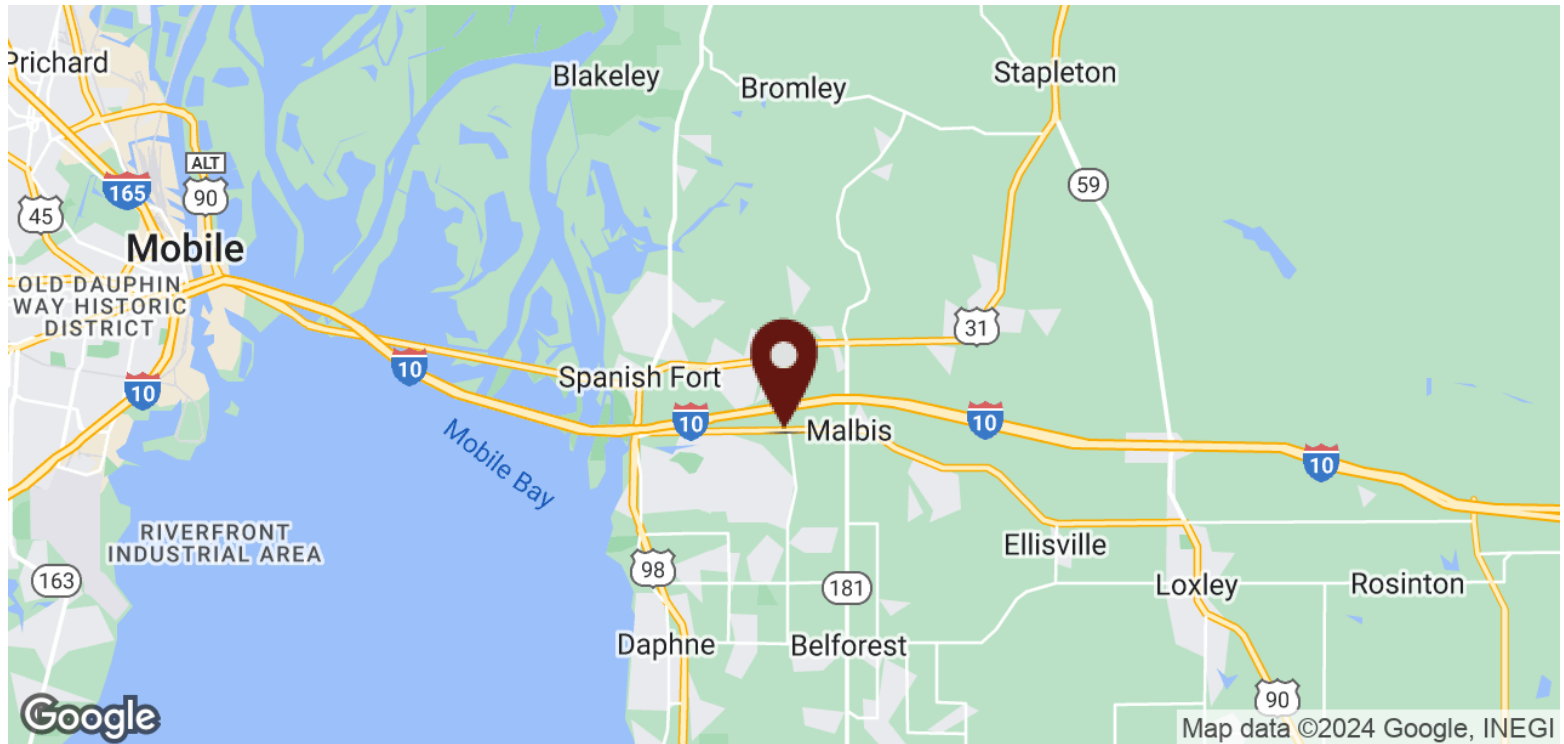


**Matt White**

251.377.3033

[matt@white-spunnerrealty.com](mailto:matt@white-spunnerrealty.com)





# Matt White

251.377.3033

[matt@white-spinnerrealty.com](mailto:matt@white-spinnerrealty.com)

White-Spunner has obtained the information from sources it believes to be reliable and believes the information to be correct. No representation or warranties, expressed or implied are made as to the accuracy or reliability of this information. The recipient bears responsibility for verification of the information contained herein and bears all risk for any accuracy.



**Southeast Corner Of US-90 & CR 13**



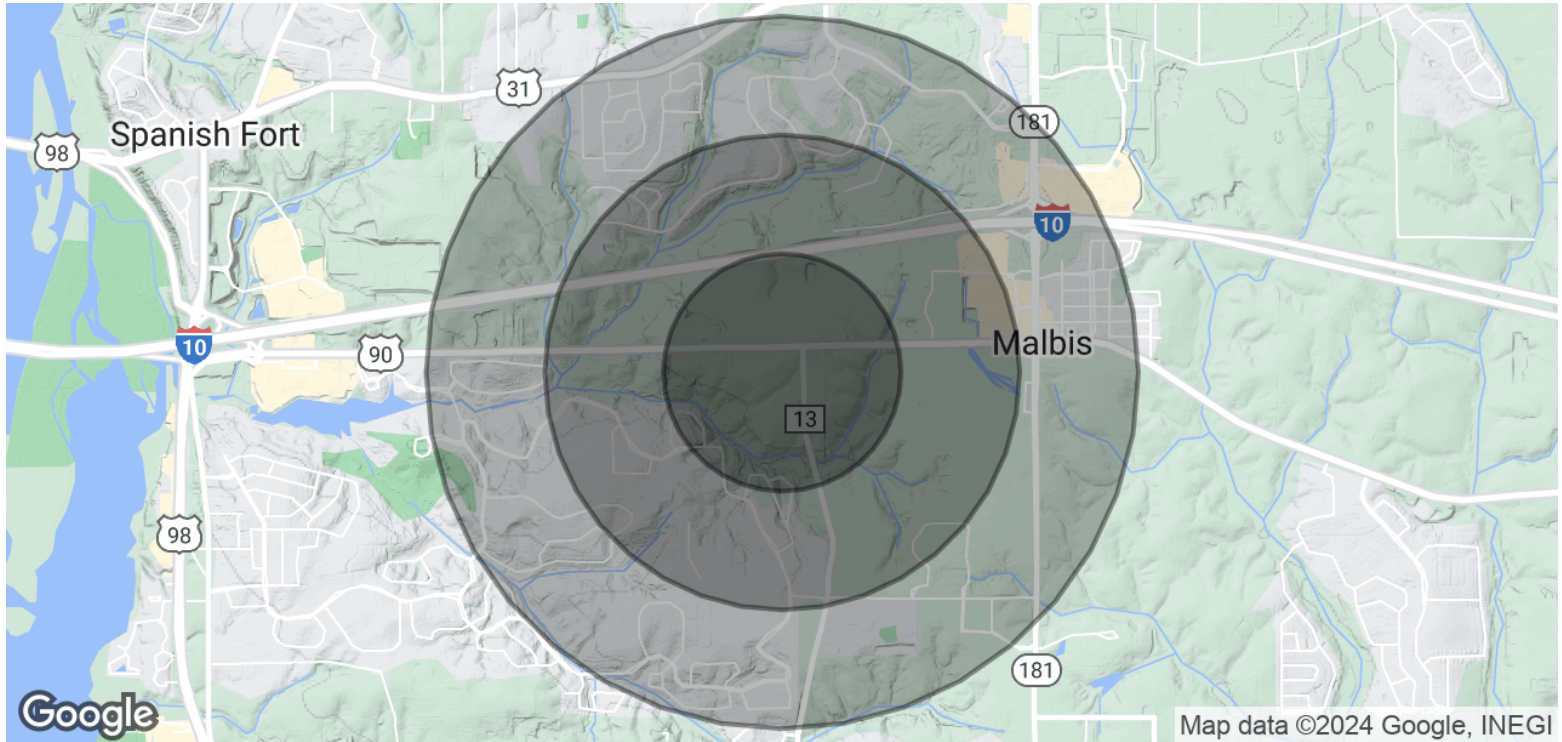
**Matt White**

251.377.3033

[matt@white-spunnerrealty.com](mailto:matt@white-spunnerrealty.com)

White-Spunner has obtained the information from sources it believes to be reliable and believes the information to be correct. No representation or warranties, expressed or implied are made as to the accuracy or reliability of this information. The recipient bears responsibility for verification of the information contained herein and bears all risk for any accuracy.





POPULATION	0.5 MILES	1 MILE	1.5 MILES
Total Population	876	3,818	8,732
Average Age	42	42	42
Average Age (Male)	40	41	41
Average Age (Female)	43	44	44

HOUSEHOLDS & INCOME	0.5 MILES	1 MILE	1.5 MILES
Total Households	348	1,486	3,362
# of Persons per HH	2.5	2.6	2.6
Average HH Income	\$99,486	\$106,796	\$107,594
Average House Value	\$290,852	\$334,298	\$347,525

\* Demographic data derived from 2020 ACS - US Census

**Matt White**

251.377.3033

matt@white-spunnerrealty.com

White-Spunner has obtained the information from sources it believes to be reliable and believes the information to be correct. No representation or warranties, expressed or implied are made as to the accuracy or reliability of this information. The recipient bears responsibility for verification of the information contained herein and bears all risk for any accuracy.

