

# LAKES/MOUNTAINS REGION LARGE ACREAGE LAND

140 Chickville Road , Ossipee, NH 03864



## PROPERTY DESCRIPTION

Available now ! Drastically Reduced pricing !!! Eight lots of record, providing many forms of opportunity. This is a bulk sale of the remainder of the lots, excepting lot 7, which the seller will retain. Lots to be included are lots 1-6, 8 and 9. The property has three high points overlooking Dan Hole Pond. From the top there are views that approach 360 degrees.

This acreage sits on a class 5 highway and has a gravel access roadway already in place, with future improvements to be made as part of the access road. There are also some logging roads already on site.

## PROPERTY HIGHLIGHTS

- Permitted residential uses for this site include: Single & Two family dwellings
- PRICING DECREASED! WAS ORIGINALLY \$4,238 per acre
- Off-grid hunting cabins - woodland hideaway

## OFFERING SUMMARY

Sale Price:	\$1,848,455
Lot Size:	770 Acres

DEMOGRAPHICS	1 MILE	5 MILES	10 MILES
Total Households	70	1,923	7,783
Total Population	181	4,821	18,923
Average HH Income	\$50,695	\$58,558	\$65,786

We obtained the information above from sources we believe to be reliable. However, we have not verified its accuracy and make no guarantee, warranty or representation about it. It is submitted subject to the possibility of errors, omissions, change of price, rental or other conditions, prior sale, lease or financing, or withdrawal without notice. We include projections, opinions, assumptions or estimates for example only, and they may not represent current or future performance of the property. You and your tax and legal advisors should conduct your own investigation of the property and transaction.

**DAVE GARVEY**  
Managing Director  
O: 603.610.8523  
C: 603.491.2854  
davegarvey@kwcommercial.com  
NH #004637

**VIKTORIA ALKOVA**  
Commercial Real Estate Agent, MiCP  
O: 603.610.8500  
C: 646.577.1194  
viktoria@kwclcg.com  
NH #074657

**ETHAN ASH**  
Commercial & Investment Specialist, MiCP  
O: +16036108500 X1430  
C: 603.707.2319  
ethan.ash@kw.com  
NH #071469

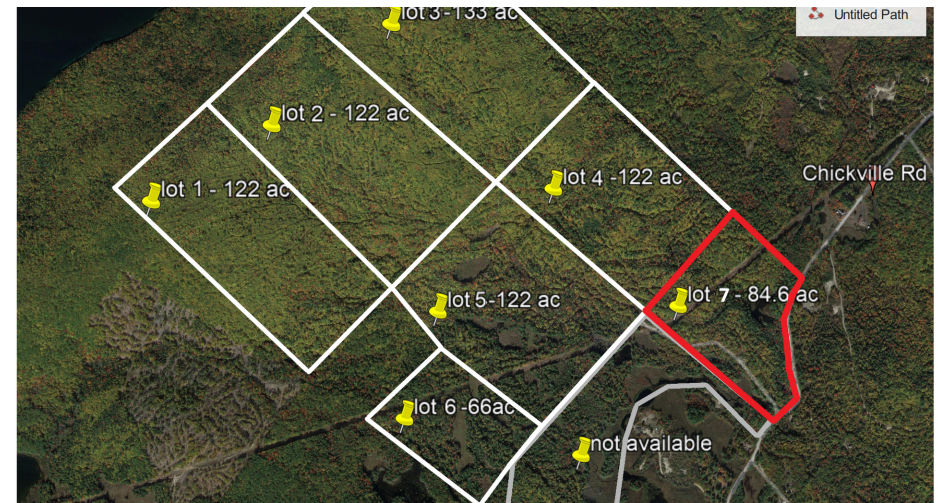
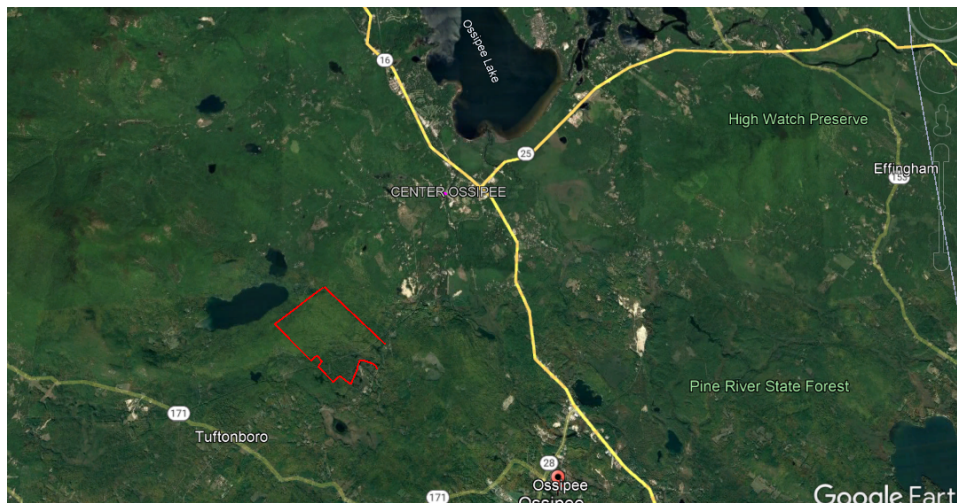
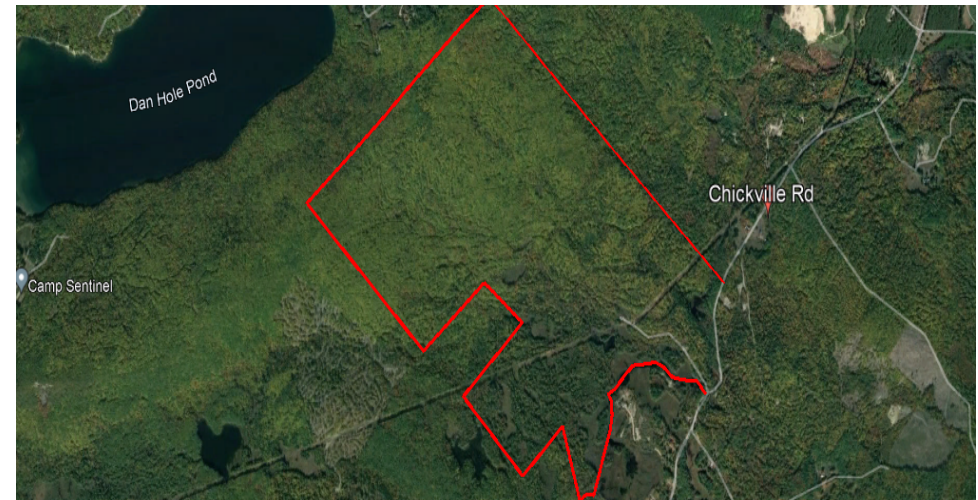
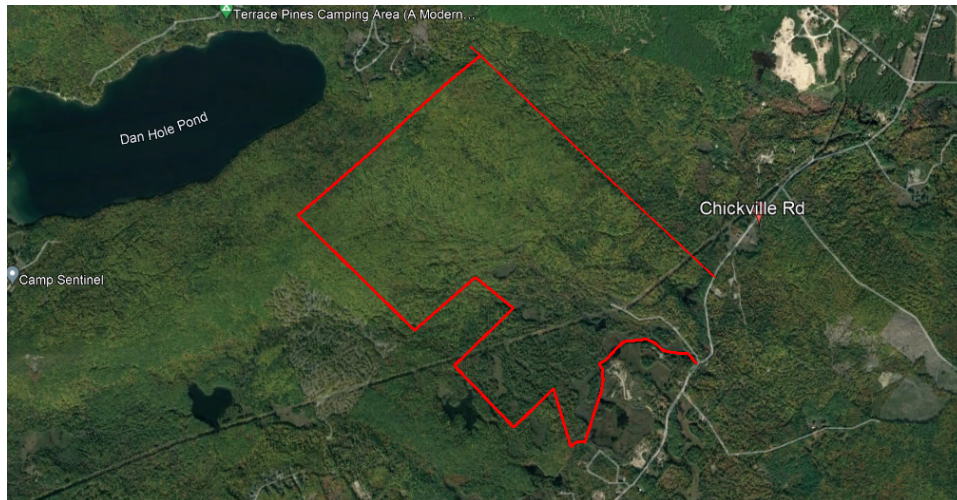
**KELLER WILLIAMS COASTAL REALTY**  
603.610.8500  
750 Lafayette Rd.  
Suite 201 - Coastal Land & Commercial Group  
Portsmouth, NH 03801



## LAND FOR SALE

# LAKES/MOUNTAINS REGION LARGE ACREAGE LAND

140 Chickville Road , Ossipee, NH 03864



We obtained the information above from sources we believe to be reliable. However, we have not verified its accuracy and make no guarantee, warranty or representation about it. It is submitted subject to the possibility of errors, omissions, change of price, rental or other conditions, prior sale, lease or financing, or withdrawal without notice. We include projections, opinions, assumptions or estimates for example only, and they may not represent current or future performance of the property. You and your tax and legal advisors should conduct your own investigation of the property and transaction.

**DAVE GARVEY**  
Managing Director  
O: 603.610.8523  
C: 603.491.2854  
davegarvey@kwcommercial.com  
NH #004637

**VIKTORIA ALKOVA**  
Commercial Real Estate Agent, MiCP  
O: 603.610.8500  
C: 646.577.1194  
viktoria@kwclcg.com  
NH #074657

**ETHAN ASH**  
Commercial & Investment Specialist, MiCP  
O: +16036108500 X1430  
C: 603.707.2319  
ethan.ash@kw.com  
NH #071469

**KELLER WILLIAMS COASTAL REALTY**  
603.610.8500  
750 Lafayette Rd.  
Suite 201 - Coastal Land & Commercial Group  
Portsmouth, NH 03801

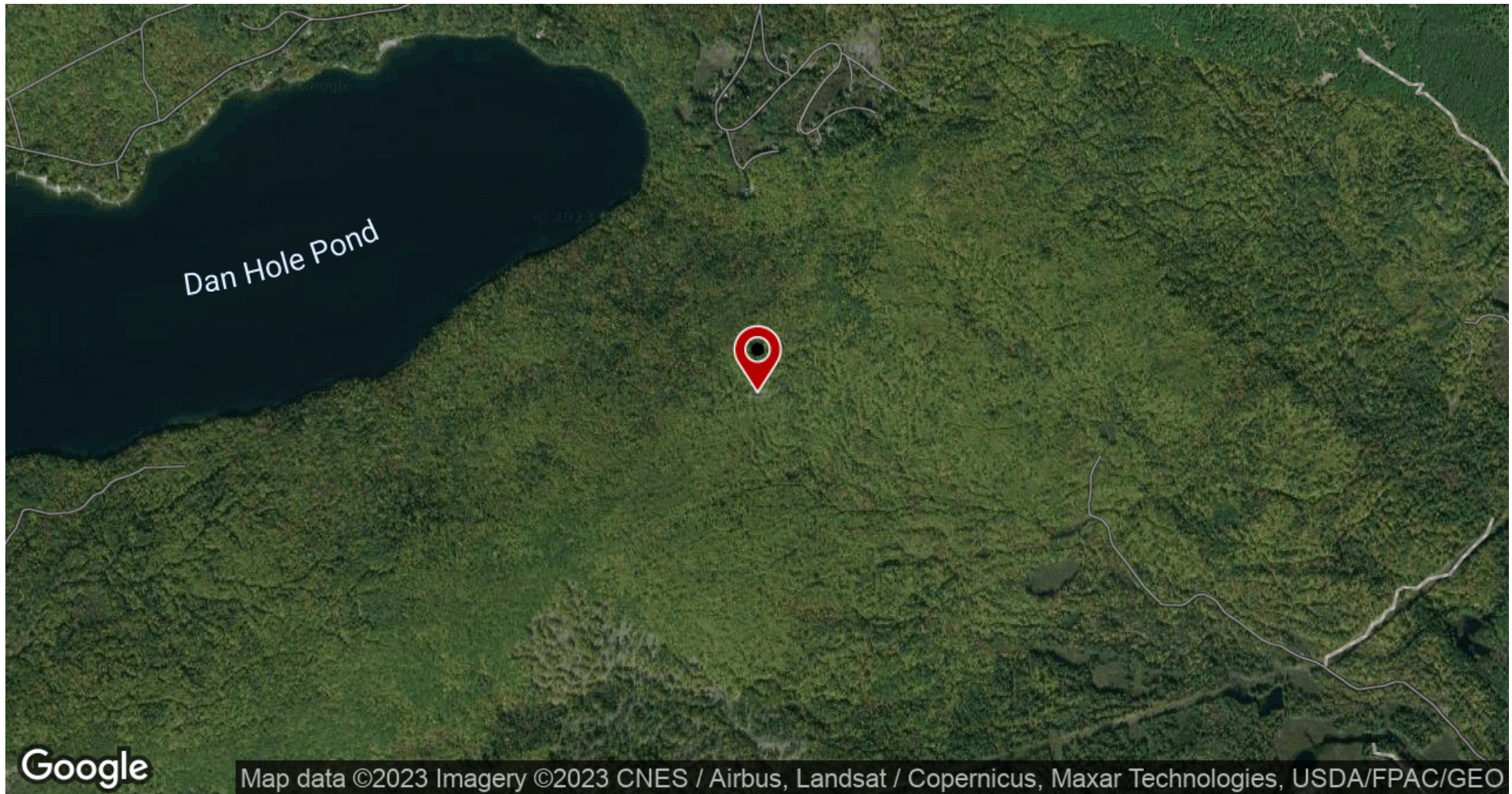
Each Office Independently Owned and Operated [kwclcg.com](http://kwclcg.com)



**LAND FOR SALE**

# LAKES/MOUNTAINS REGION LARGE ACREAGE LAND

140 Chickville Road , Ossipee, NH 03864



We obtained the information above from sources we believe to be reliable. However, we have not verified its accuracy and make no guarantee, warranty or representation about it. It is submitted subject to the possibility of errors, omissions, change of price, rental or other conditions, prior sale, lease or financing, or withdrawal without notice. We include projections, opinions, assumptions or estimates for example only, and they may not represent current or future performance of the property. You and your tax and legal advisors should conduct your own investigation of the property and transaction.

**DAVE GARVEY**  
Managing Director  
O: 603.610.8523  
C: 603.491.2854  
davegarvey@kwcommercial.com  
NH #004637

**VIKTORIA ALKOVA**  
Commercial Real Estate Agent, MiCP  
O: 603.610.8500  
C: 646.577.1194  
viktorija@kwclcg.com  
NH #074657

**ETHAN ASH**  
Commercial & Investment Specialist, MiCP  
O: +16036108500 X1430  
C: 603.707.2319  
ethan.ash@kw.com  
NH #071469

**KELLER WILLIAMS COASTAL REALTY**  
603.610.8500  
750 Lafayette Rd.  
Suite 201 - Coastal Land & Commercial Group  
Portsmouth, NH 03801

Each Office Independently Owned and Operated [kwclcg.com](http://kwclcg.com)



## LAND FOR SALE

# LAKES/MOUNTAINS REGION LARGE ACREAGE LAND

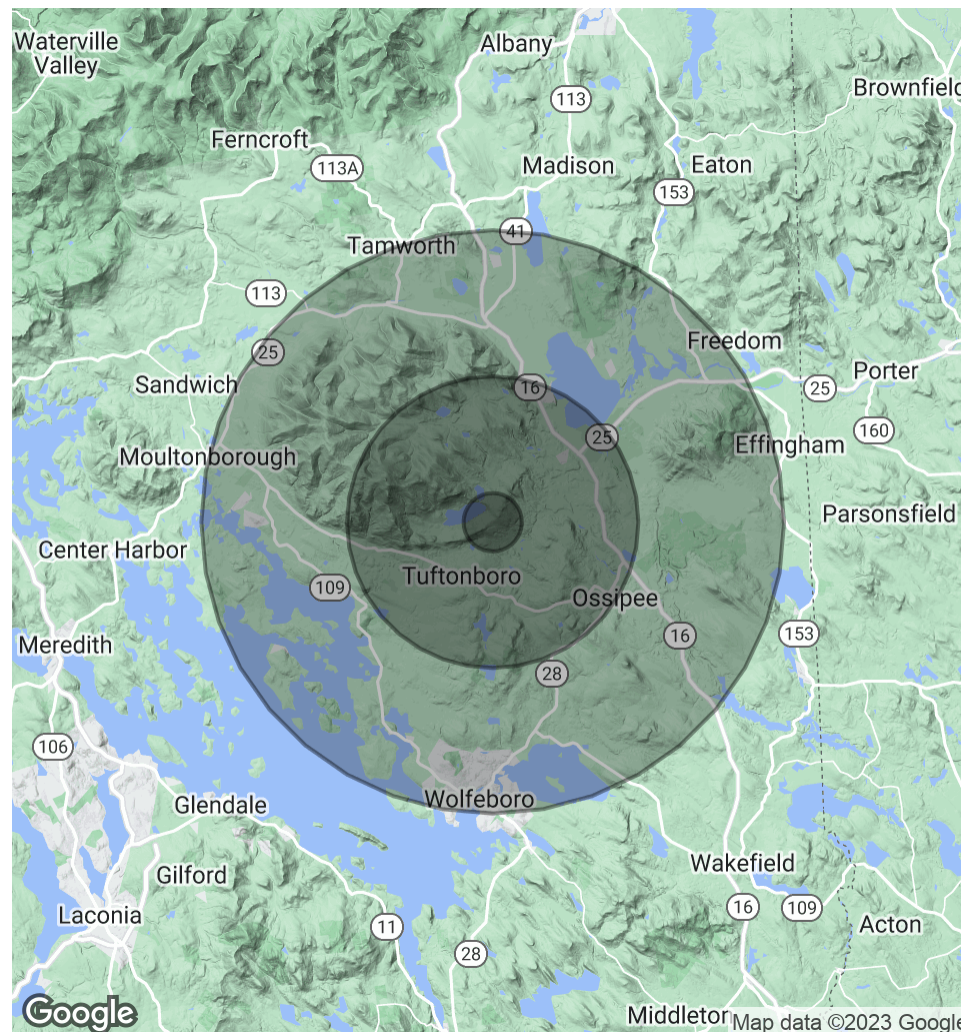
140 Chickville Road , Ossipee, NH 03864



POPULATION	1 MILE	5 MILES	10 MILES
Total Population	181	4,821	18,923
Average Age	41.4	44.9	48.0
Average Age (Male)	40.8	43.3	46.2
Average Age (Female)	44.4	47.4	49.5

HOUSEHOLDS & INCOME	1 MILE	5 MILES	10 MILES
Total Households	70	1,923	7,783
# of Persons per HH	2.6	2.5	2.4
Average HH Income	\$50,695	\$58,558	\$65,786
Average House Value		\$349,627	\$346,499

\* Demographic data derived from 2020 ACS - US Census



We obtained the information above from sources we believe to be reliable. However, we have not verified its accuracy and make no guarantee, warranty or representation about it. It is submitted subject to the possibility of errors, omissions, change of price, rental or other conditions, prior sale, lease or financing, or withdrawal without notice. We include projections, opinions, assumptions or estimates for example only, and they may not represent current or future performance of the property. You and your tax and legal advisors should conduct your own investigation of the property and transaction.

**DAVE GARVEY**  
Managing Director  
O: 603.610.8523  
C: 603.491.2854  
davegarvey@kwcommercial.com  
NH #004637

**VIKTORIA ALKOVA**  
Commercial Real Estate Agent, MiCP  
O: 603.610.8500  
C: 646.577.1194  
viktorija@kwclcg.com  
NH #074657

**ETHAN ASH**  
Commercial & Investment Specialist, MiCP  
O: +16036108500 X1430  
C: 603.707.2319  
ethan.ash@kw.com  
NH #071469

**KELLER WILLIAMS COASTAL REALTY**  
603.610.8500  
750 Lafayette Rd.  
Suite 201 - Coastal Land & Commercial Group  
Portsmouth, NH 03801

Each Office Independently Owned and Operated [kwclcg.com](http://kwclcg.com)