

For Lease

LAKESIDE BUSINESS CENTER - 2821



2821 Bolton Rd Orange Park, FL 32073



Offering Summary

Lease Rate:	\$950.00 per month (NNN)
Building Size:	2,880 SF
Available SF:	720 SF
Year Built:	1981
Renovated:	2022
Zoning:	BA

Property Overview

Addison Commercial Real Estate is proud to exclusively represent the Landlord at Lakeside Business Center in Orange Park. Located immediately off of Blanding near one of the major shopping centers in the area. Recently renovated office suites with Starbucks within walking distance.

Property Highlights

- Move-in Ready Renovated Office Suites
- Build-To-Suit Opportunity
- Starbucks Within Walking Distance
- Immediately Off Blanding Blvd

CONTACT

Advisors

Jake Ammon, CCIM
904.354.1789 x213
jake@acrei.com

Office

Addison Commercial Real Estate, Inc.
7400 Baymeadows Way, Ste. 320
904.354.1789 | www.acrei.com



For Lease

LAKE SIDE BUSINESS CENTER | 2821



2821 Bolton Rd Orange Park, FL 32073



CONTACT

Advisors

Jake Ammon, CCIM
904.354.1789 x213
jake@acrei.com

Office

Addison Commercial Real Estate, Inc.
7400 Baymeadows Way, Ste. 320
904.354.1789 | www.acrei.com

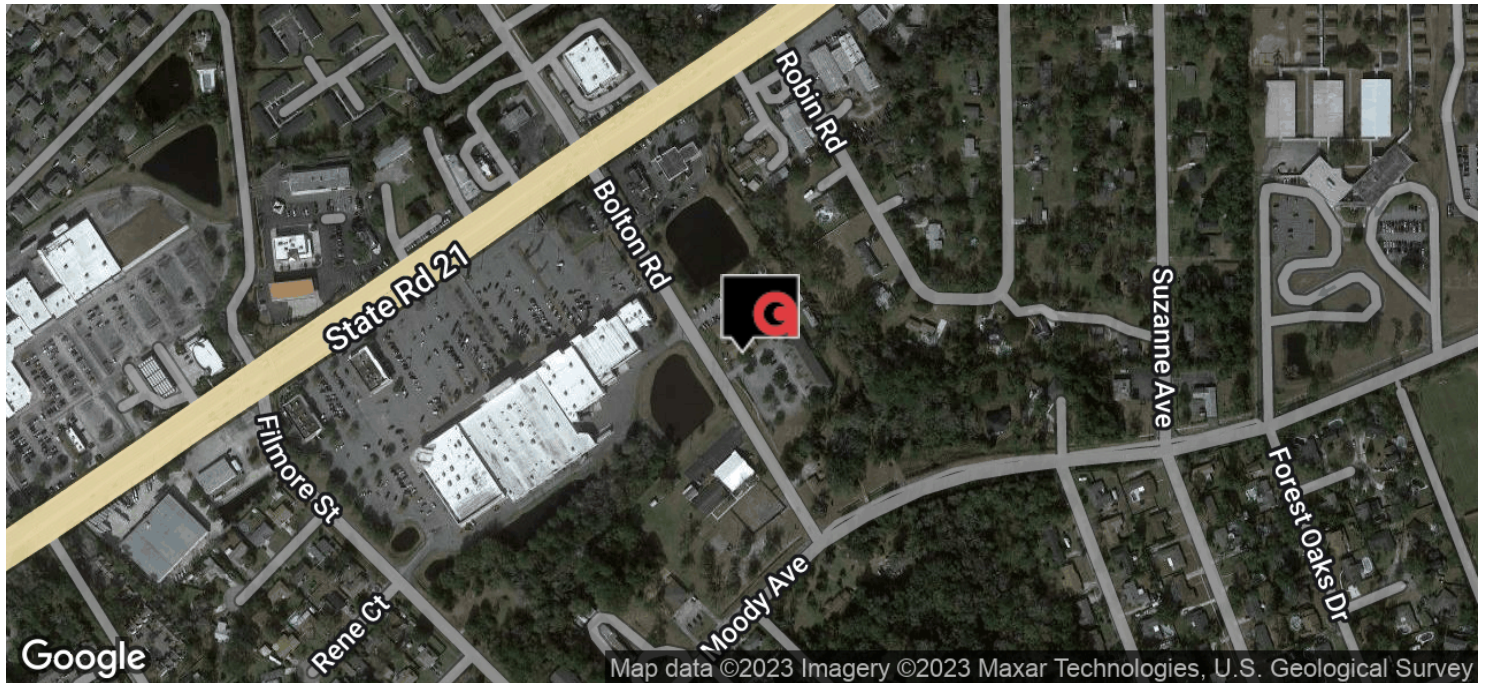


For Lease

LAKESIDE BUSINESS CENTER | 2821



2821 Bolton Rd Orange Park, FL 32073



CONTACT

Advisors

Jake Ammon, CCIM
904.354.1789 x213
jake@acrei.com

Office

Addison Commercial Real Estate, Inc.
7400 Baymeadows Way, Ste. 320
904.354.1789 | www.acrei.com

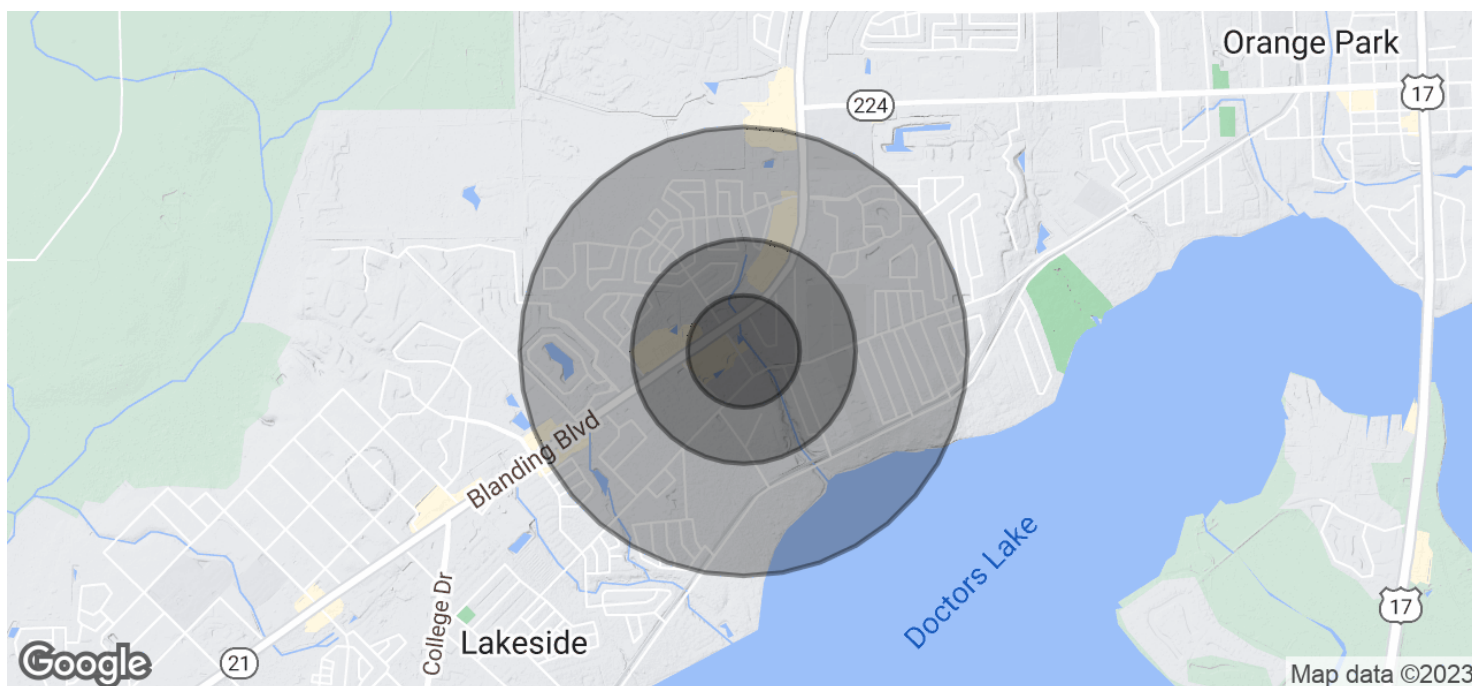


For Lease

LAKESIDE BUSINESS CENTER | 2821



2821 Bolton Rd Orange Park, FL 32073



Population	0.25 Miles	0.5 Miles	1 Mile
Total Population	481	1,982	7,496
Average Age	39.2	41.1	41.6
Average Age (Male)	37.0	38.5	39.4
Average Age (Female)	45.2	45.3	44.6

Households & Income	0.25 Miles	0.5 Miles	1 Mile
Total Households	194	799	2,984
# of Persons per HH	2.5	2.5	2.5
Average HH Income	\$83,508	\$87,623	\$84,984
Average House Value	\$185,178	\$184,150	\$185,933

* Demographic data derived from 2020 ACS - US Census

CONTACT

Advisors

Jake Ammon, CCIM
904.354.1789 x213
jake@acrei.com

Office

Addison Commercial Real Estate, Inc.
7400 Baymeadows Way, Ste. 320
904.354.1789 | www.acrei.com

