

Ground-Floor Office at Millikan Pointe

14725 SW MILLIKAN WAY | BEAVERTON, OR 97003



Seth Platsman
503.416.0091
seth@macadamforbes.com
Licensed in OR

2 Centerpointe Drive, Suite 500 | Lake Oswego, OR 97035 | WWW.MACADAMFORBES.COM | 503.227.2500

All of the information contained herein was obtained either from the owner or other parties we consider reliable. We have no reason to doubt its accuracy, however we do not guarantee it.

FOR LEASE



FOR LEASE

14725 SW Millikan Way, Beaverton, OR 97003



PROPERTY DESCRIPTION

Millikan Pointe is a professional office park located in Beaverton, Oregon, offering premium office spaces for lease. This property boasts modern amenities and a convenient location, making it the perfect choice for any business looking for a prestigious business address.

The subject space features an excellent blend of private offices, conference rooms, and open work area. The space overlooks the Beaverton Creek natural area.

PROPERTY HIGHLIGHTS

- Polished concrete floors
- High ceilings
- Large breakroom
- Private bathrooms

OFFERING SUMMARY

Lease Rate:	\$26.50 SF/yr (Full Service)
Available SF:	2,610 SF
Building Size:	2,610 SF



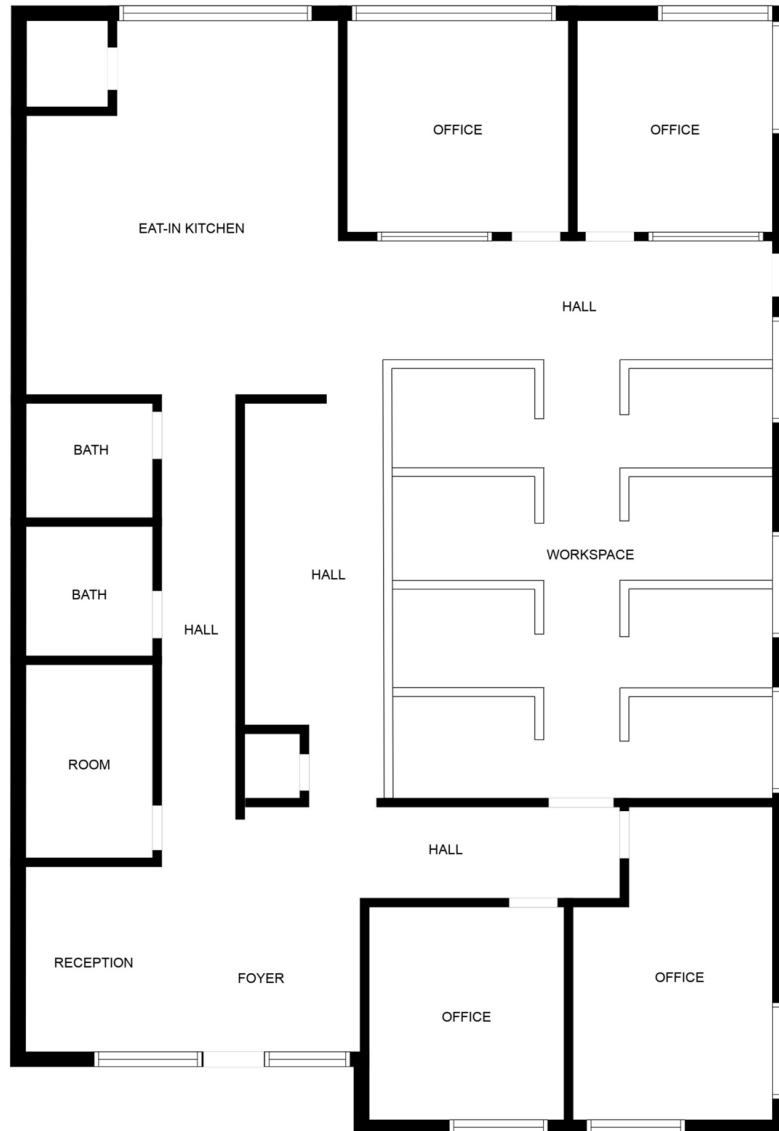
Seth Platsman
503.416.0091
seth@macadamforbes.com
Licensed in OR

All of the information contained herein was obtained either from the owner or other parties we consider reliable. We have no reason to doubt its accuracy, however we do not guarantee it.

MACADAMFORBES.COM | 503.227.2500

FOR LEASE

14725 SW Millikan Way, Beaverton, OR 97003



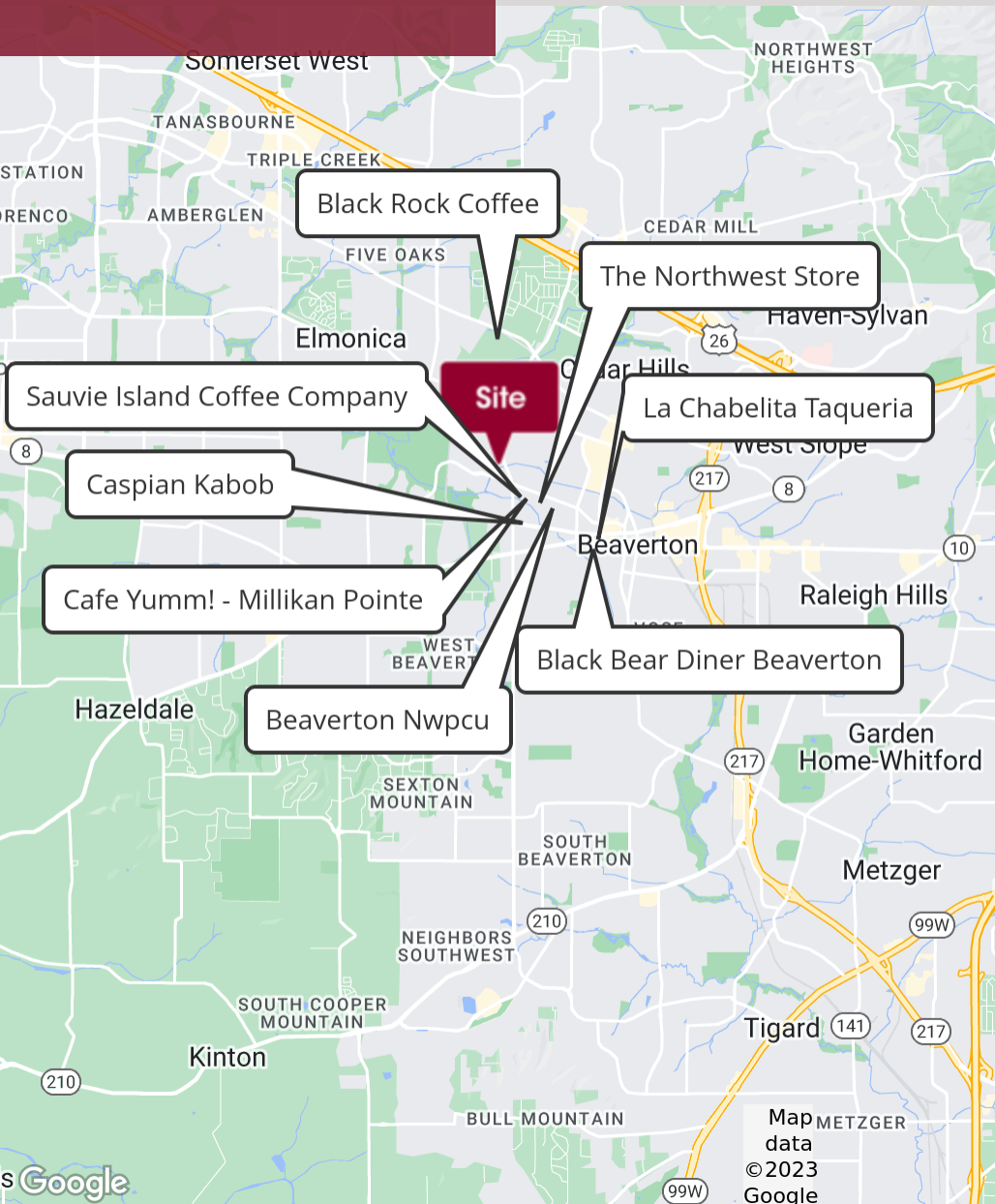
Seth Platsman
503.416.0091
seth@macadamforbes.com
Licensed in OR

All of the information contained herein was obtained either from the owner or other parties we consider reliable. We have no reason to doubt its accuracy, however we do not guarantee it.

MACADAMFORBES.COM | 503.227.2500

FOR LEASE

14725 SW Millikan Way, Beaverton, OR 97003



DEMOGRAPHICS

	0.5 MILES	1 MILE	1.5 MILES
Total population	1,473	14,532	39,051
Median age	32.9	34.0	35.3
Median age (Male)	30.6	32.0	33.5
Median age (Female)	35.4	37.6	37.9
Total households	684	6,107	16,098
Total persons per HH	2.2	2.4	2.4
Average HH income	\$79,968	\$73,985	\$79,049
Average house value	\$4,880	\$196,982	\$286,579

LOCATION OVERVIEW

Millikan Pointe is a 10 building mixed-use development within Beaverton. The development offers convenient retail providers along with professional service office firms. The subject property has close proximity to major corporate offices such as Nike, Intel, and Columbia. The property and tenants are subject to friendly Washington County business taxes.



Seth Platsman

503.416.0091

seth@macadamforbes.com

Licensed in OR

All of the information contained herein was obtained either from the owner or other parties we consider reliable. We have no reason to doubt its accuracy, however we do not guarantee it.

MACADAMFORBES.COM | 503.227.2500