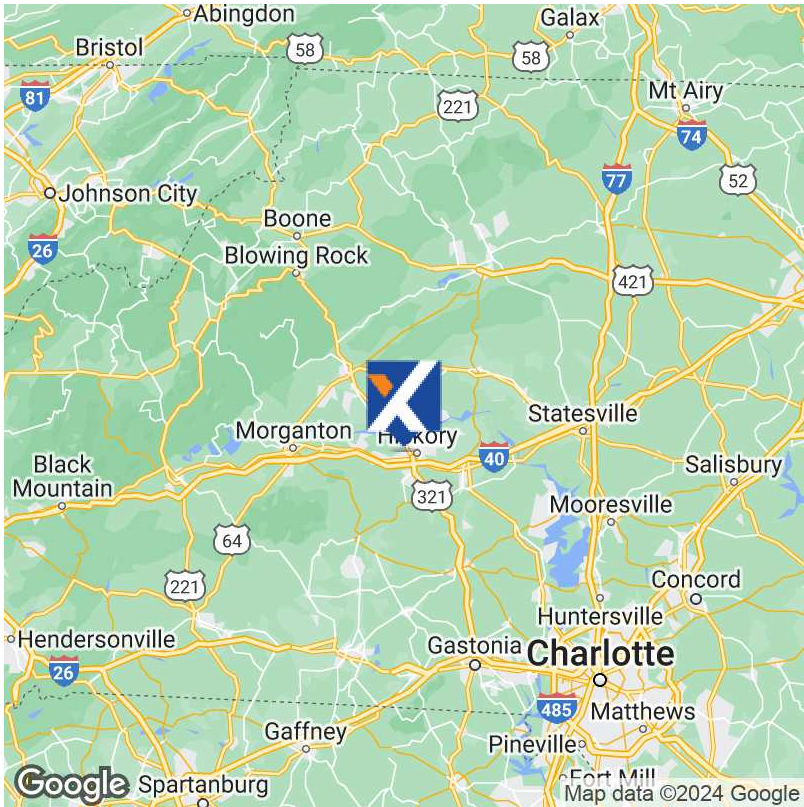


# FOR SALE | 2408 1st Ave SW - Retail



## OFFERING SUMMARY

Sale Price:	Contact Listing Agent
Building Size:	475 SF
Available SF:	
Lot Size:	0.3 Acres
Price / SF:	\$421.05
Year Built:	1963
Zoning:	C-4

## PROPERTY OVERVIEW

Currently used as an auto sale business with two office spaces. Primary office has a bathroom and storage room. 30+ Parking spots currently being used. Next door to Long View Police Department and Town Hall. Zoning approves many uses, reach out to the listing agent for use table. Inventory may be negotiable at additional cost.

## PROPERTY HIGHLIGHTS

- Two Office Buildings
- Lots of Parking
- Zoning allows for many uses
- Frontage on 1st Ave SW
- Carport

**Scott Linderer**

336.454.9368  
scottpgnc@gmail.com  
NC #317699

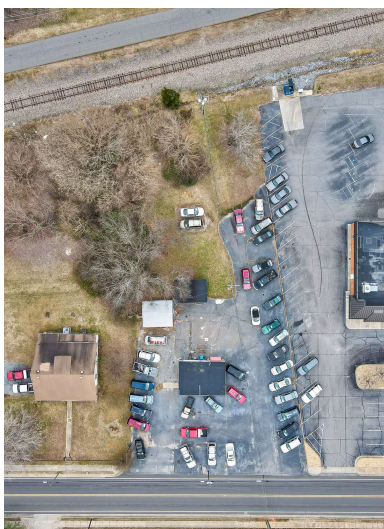
eXp Commercial, LLC, its direct and indirect parents and their subsidiaries (together, "We") obtained the information above from sources believed to be reliable, however, We have not verified its accuracy and make no guarantee, warranty or representation, expressed or implied, about such information. The information contained above is submitted subject to the possibility of errors, omissions, price changes, rental or other conditions, prior sale, lease or financing, or withdrawal without notice. Any projections, opinions, assumptions or estimates of the information contained above or provided in connection therewith, either expressed or implied, are for example only, and they may not represent current or future performance of the subject property. You, together with your tax and legal advisors, should conduct your own thorough investigation of the subject property and potential investment.

**exp**<sup>TM</sup>  
COMMERCIAL

**PREMIERE**  
GROUP



# FOR SALE | 2408 1st Ave SW - Retail



**Scott Linderer**

336.454.9368  
scottpgnc@gmail.com  
NC #317699

eXp Commercial, LLC, its direct and indirect parents and their subsidiaries (together, "We") obtained the information above from sources believed to be reliable, however, We have not verified its accuracy and make no guarantee, warranty or representation, expressed or implied, about such information. The information contained above is submitted subject to the possibility of errors, omissions, price changes, rental or other conditions, prior sale, lease or financing, or withdrawal without notice. Any projections, opinions, assumptions or estimates of the information contained above or provided in connection therewith, either expressed or implied, are for example only, and they may not represent current or future performance of the subject property. You, together with your tax and legal advisors, should conduct your own thorough investigation of the subject property and potential investment.

**exp**<sup>TM</sup>  
COMMERCIAL

**PREMIERE**  
GROUP



# FOR SALE | 2408 1st Ave SW - Retail



Map data ©2023 Imagery ©2023, Alexander County, Burke County, CNES / Airbus, Landsat / Copernicus, Maxar Technologies, Orbis Inc, U.S. Geological Survey, USDA/FPAC/GEO

**Scott Linderer**

336.454.9368  
scottpgnc@gmail.com  
NC #317699

eXp Commercial, LLC, its direct and indirect parents and their subsidiaries (together, "We") obtained the information above from sources believed to be reliable, however, We have not verified its accuracy and make no guarantee, warranty or representation, expressed or implied, about such information. The information contained above is submitted subject to the possibility of errors, omissions, price changes, rental or other conditions, prior sale, lease or financing, or withdrawal without notice. Any projections, opinions, assumptions or estimates of the information contained above or provided in connection therewith, either expressed or implied, are for example only, and they may not represent current or future performance of the subject property. You, together with your tax and legal advisors, should conduct your own thorough investigation of the subject property and potential investment.

**exp**<sup>TM</sup>  
COMMERCIAL

**PREMIERE**  
GROUP