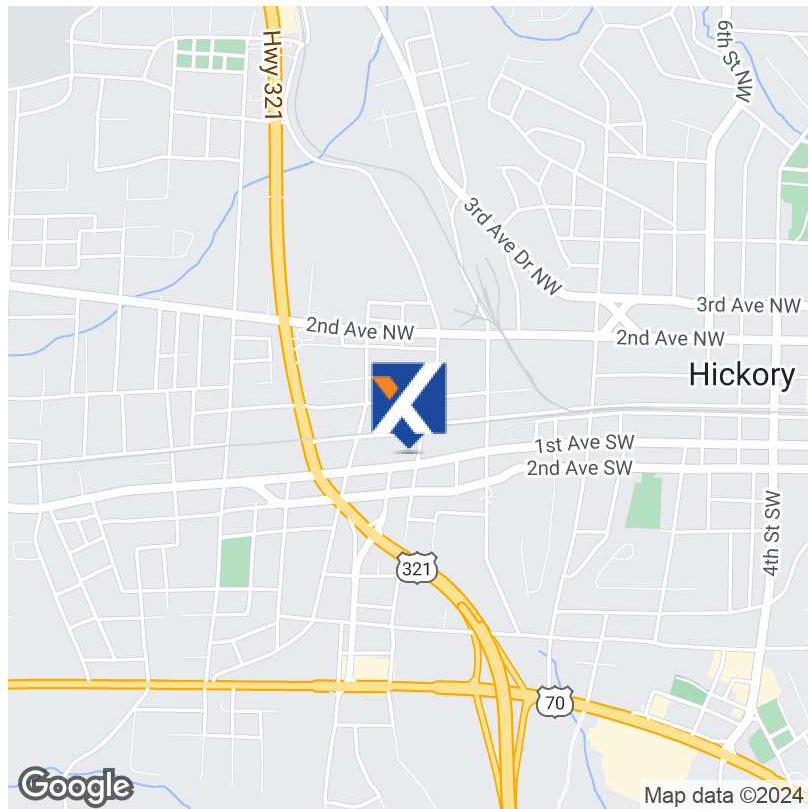


# FOR SALE | 1210 1st Ave SW - Retail



## OFFERING SUMMARY

|                |            |
|----------------|------------|
| Sale Price:    | \$179,000  |
| Building Size: | 760 SF     |
| Available SF:  |            |
| Lot Size:      | 0.41 Acres |
| Price / SF:    | \$235.53   |
| Year Built:    | 1964       |
| Renovated:     | 2006       |
| Zoning:        | C-2        |

## PROPERTY OVERVIEW

CORNER LOT with TWO BUILDINGS totaling around 760 sqft. Full Kitchenette with bathroom in one and another bath in the other. Garage, plus large shed, plus large carport! Lots of options with commercial zoning. Including leasing multiple units. Was previously used as a successful used auto sales location with millions in gross sales. OWNER FINANCING AVAILABLE - For Sale or Lease!

Third parcel may be available at additional cost, property next door 1240 1st Ave SW is also for sale with listing agent.

## PROPERTY HIGHLIGHTS

- Corner Lot (2 parcels)
- Two Buildings
- Full Kitchenette
- 2 Bathrooms
- Garage
- Large Shed
- Large Carport
- Lots of options with zoning

### Scott Linderer

336.454.9368  
scottpgnc@gmail.com  
NC #317699

eXp Commercial, LLC, its direct and indirect parents and their subsidiaries (together, "We") obtained the information above from sources believed to be reliable, however, We have not verified its accuracy and make no guarantee, warranty or representation, expressed or implied, about such information. The information contained above is submitted subject to the possibility of errors, omissions, price changes, rental or other conditions, prior sale, lease or financing, or withdrawal without notice. Any projections, opinions, assumptions or estimates of the information contained above or provided in connection therewith, either expressed or implied, are for example only, and they may not represent current or future performance of the subject property. You, together with your tax and legal advisors, should conduct your own thorough investigation of the subject property and potential investment.

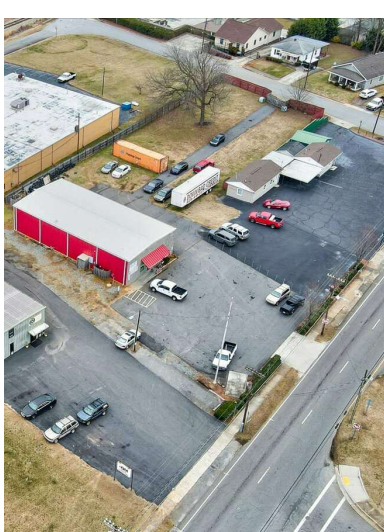
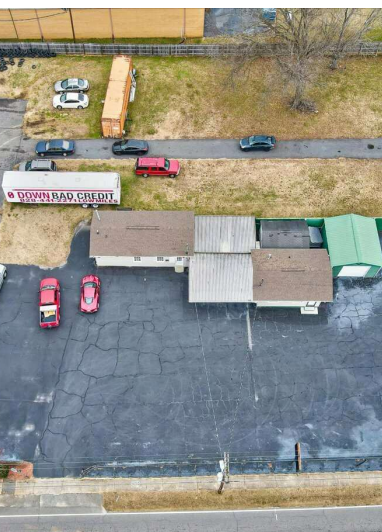
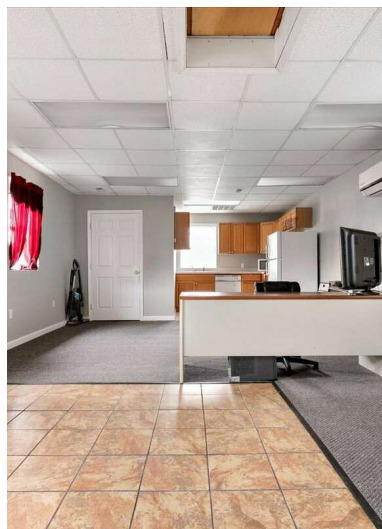
**exp**<sup>TM</sup>  
COMMERCIAL



**PREMIERE GROUP**  
Brokered by eXp Commercial



# FOR SALE | 1210 1st Ave SW - Retail



**Scott Linderer**

336.454.9368  
scottpgnc@gmail.com  
NC #317699

eXp Commercial, LLC, its direct and indirect parents and their subsidiaries (together, "We") obtained the information above from sources believed to be reliable, however, We have not verified its accuracy and make no guarantee, warranty or representation, expressed or implied, about such information. The information contained above is submitted subject to the possibility of errors, omissions, price changes, rental or other conditions, prior sale, lease or financing, or withdrawal without notice. Any projections, opinions, assumptions or estimates of the information contained above or provided in connection therewith, either expressed or implied, are for example only, and they may not represent current or future performance of the subject property. You, together with your tax and legal advisors, should conduct your own thorough investigation of the subject property and potential investment.

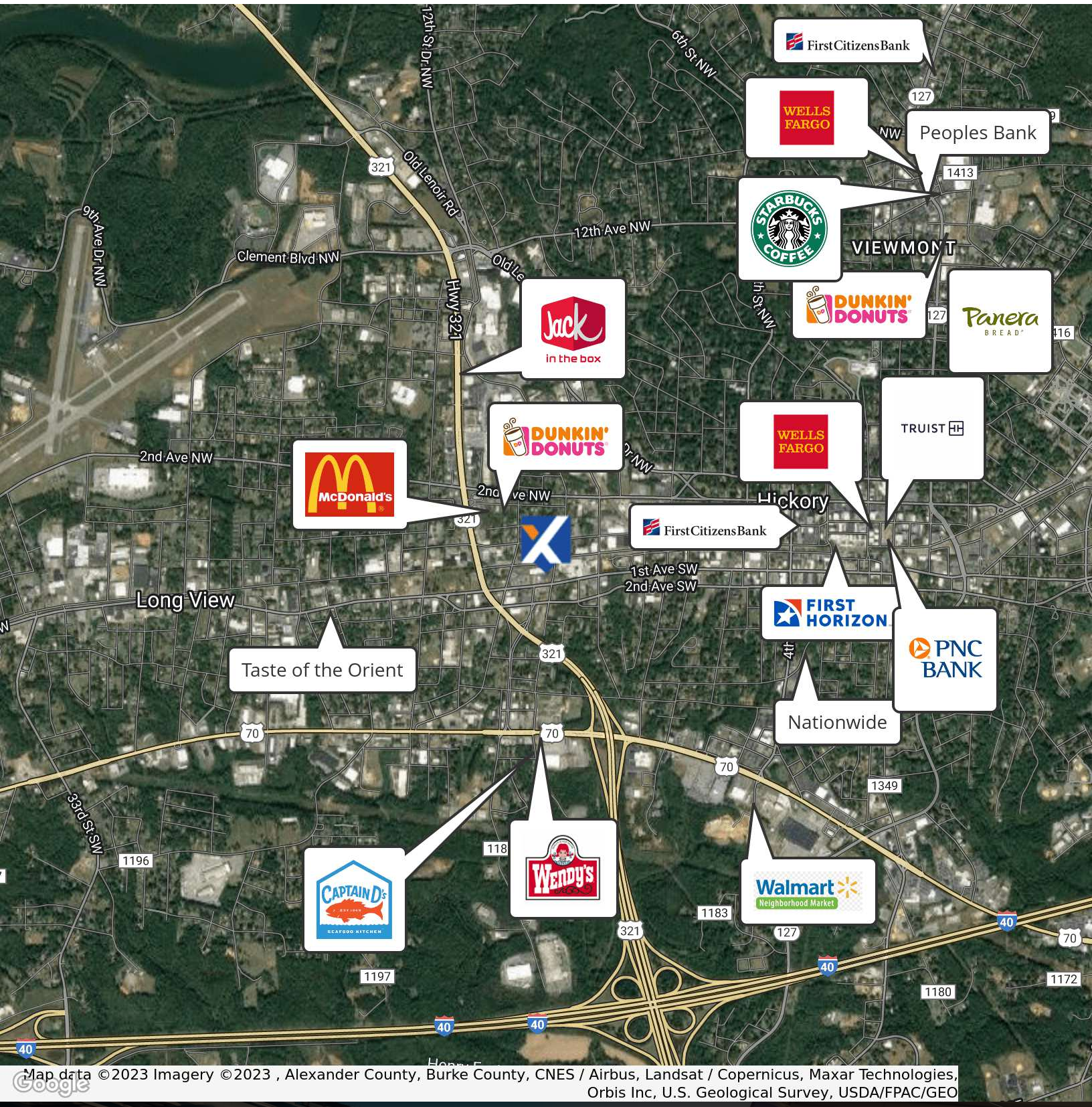
**exp**<sup>TM</sup>  
COMMERCIAL



**PREMIERE GROUP**  
Brokered by eXp Commercial



# FOR SALE | 1210 1st Ave SW - Retail



Map data ©2023 Imagery ©2023, Alexander County, Burke County, CNES / Airbus, Landsat / Copernicus, Maxar Technologies, Orbis Inc, U.S. Geological Survey, USDA/FPAC/GEO

**Scott Linderer**

336.454.9368  
scottpgnc@gmail.com  
NC #317699

eXp Commercial, LLC, its direct and indirect parents and their subsidiaries (together, "We") obtained the information above from sources believed to be reliable, however, We have not verified its accuracy and make no guarantee, warranty or representation, expressed or implied, about such information. The information contained above is submitted subject to the possibility of errors, omissions, price changes, rental or other conditions, prior sale, lease or financing, or withdrawal without notice. Any projections, opinions, assumptions or estimates of the information contained above or provided in connection therewith, either expressed or implied, are for example only, and they may not represent current or future performance of the subject property. You, together with your tax and legal advisors, should conduct your own thorough investigation of the subject property and potential investment.

**exp**<sup>TM</sup>  
COMMERCIAL



**PREMIERE GROUP**  
Brokered by eXp Commercial