

High Visibility Central Point Retail/Commercial Site

1874 E PINE STREET | CENTRAL POINT, OR 97502



Skip Rotticci, CCIM
503.972.7284
skip@macadamforbes.com
Licensed in OR

2 Centerpointe Drive, Suite 500 | Lake Oswego, OR 97035 | WWW.MACADAMFORBES.COM | 503.227.2500

All of the information contained herein was obtained either from the owner or other parties we consider reliable. We have no reason to doubt its accuracy, however, we do not guarantee it.

FOR SALE

**MACADAM
FORBES**
COMMERCIAL REAL ESTATE SERVICES

FOR SALE

1874 E Pine Street, Central Point, OR 97502



PROPERTY DESCRIPTION

A 7.71 acre commercial development site on East Pine Street with easy access to Interstate 5. The City of Central Point is installing a new traffic signal at the planned intersection of East Pine Street and Gebhart Road. The location is a fantastic site for a car wash, QSR, Fast Food drive-through, Convenience store, market, hotel, motel, Barber and beauty shops, sit-down restaurants, and community shopping centers.

LOCATION DESCRIPTION

East Pine Street and Hamrick Road in Central Point, Oregon is an area filled with lush green tree-lined streets and beautiful mountain views. It's the perfect spot for a peaceful stroll, with plenty of parks and trails nearby for a leisurely afternoon. The site is just east of Interstate 5 on East Pine Street at Hamrick Road in Central Point, Oregon.co

PROPERTY HIGHLIGHTS

- Zoning is C-4 Commercial Tourist and Office
- Flat Site
- Signalized Intersection
- Easy access to Interstate 5
- City Sewer
- City Water

OFFERING SUMMARY

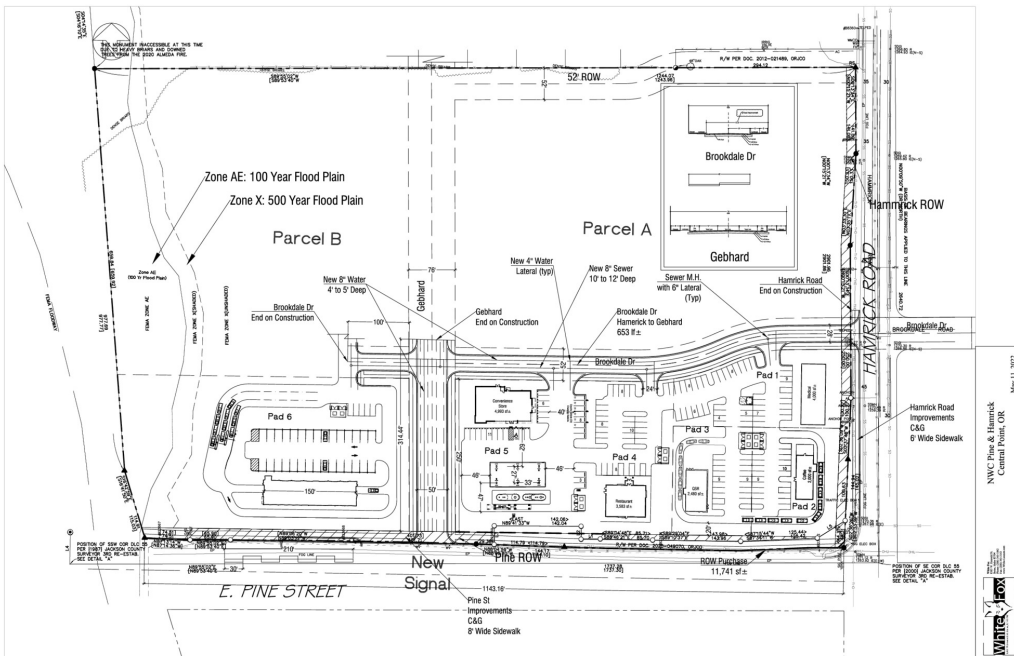
Sale Price:	\$4,500,000
Lot Size:	7.71 Acres



Skip Rotticci, CCIM
503.972.7284
skip@macadamforbes.com
Licensed in OR

FOR SALE

1874 E Pine Street, Central Point, OR 97502



Skip Rotticci, CCIM
 503.972.7284
 skip@macadamforbes.com
 Licensed in OR

All of the information contained herein was obtained either from the owner or other parties we consider reliable. We have no reason to doubt its accuracy, however we do not guarantee it.

MACADAMFORBES.COM | 503.227.2500