

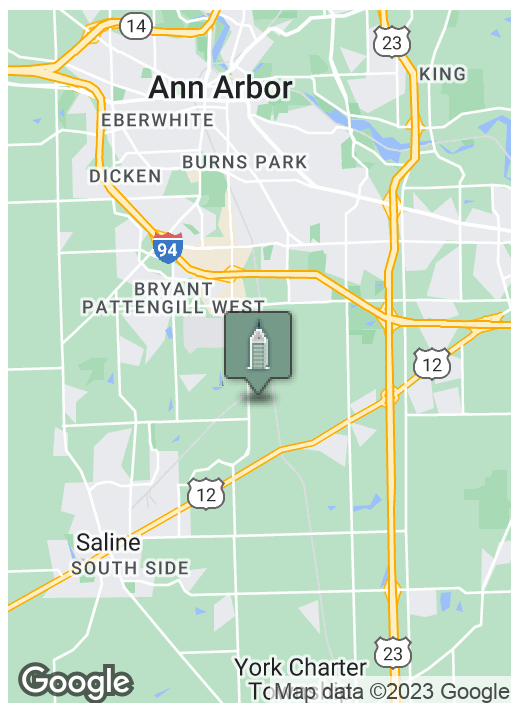
# Flex / Office / Lab / High Tech Building

5777 HINES, ANN ARBOR, MI 48108



**Swisher**  
COMMERCIAL

## SHORT LEASE



### SUMMARY

Short Term Lease Rate:

\$6.00 PSF  
Plus Utilities & Maintenance

\* See Broker For Details

Lot Size:

3.5 Acres

Building Size:

26,820 SF

### PROPERTY HIGHLIGHTS

- Single story facility in State Street Business Park
- Currently has 9' and 12' drop ceilings. Building height of 19' to deck, 16' clear
- Includes office, wet lab infrastructure, data room, assembly and shipping/ receiving functions, and two grade level overhead doors
- 121 parking spaces
- 250 kw Kohler generator

***Building  
relationships.***

208 East Washington Street Ann Arbor, MI 48104

734.663.0501

**Bart Wise**

734.358.0354

BARTW@SWISHERCOMMERCIAL.COM

SWISHERCOMMERCIAL.COM



# Flex / Office / Lab / High Tech Building

5777 HINES, ANN ARBOR, MI 48108



***Building  
relationships.***

208 East Washington Street Ann Arbor, MI 48104

734.663.0501

Bart Wise

734.358.0354

BARTW@SWISHERCOMMERCIAL.COM

SWISHERCOMMERCIAL.COM



# Flex / Office / Lab / High Tech Building

5777 HINES, ANN ARBOR, MI 48108



***Building  
relationships.***

208 East Washington Street Ann Arbor, MI 48104

734.663.0501

Bart Wise

734.358.0354

BARTW@SWISHERCOMMERCIAL.COM

SWISHERCOMMERCIAL.COM

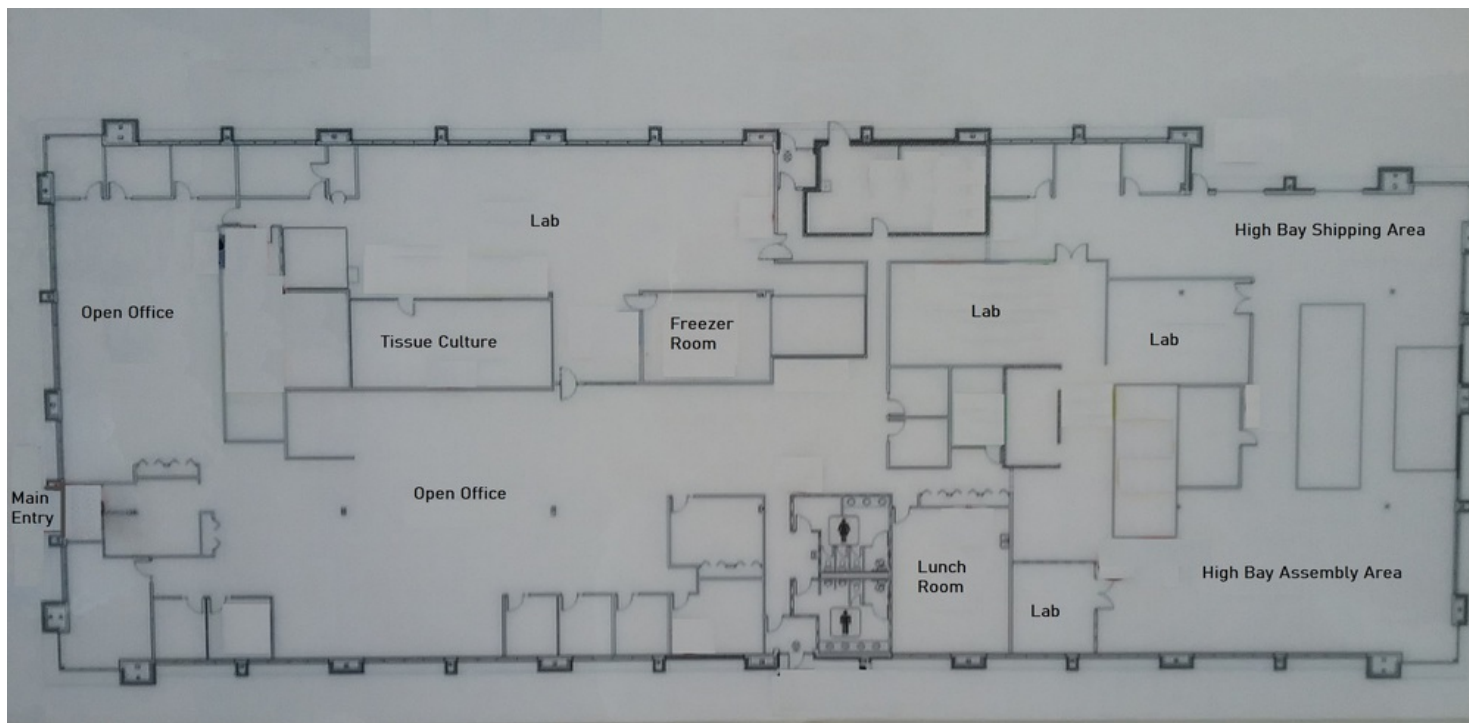


# Flex / Office / Lab / High Tech Building

5777 HINES, ANN ARBOR, MI 48108



**Swisher**  
COMMERCIAL



***Building  
relationships.***

208 East Washington Street Ann Arbor, MI 48104

734.663.0501

Bart Wise

734.358.0354

BARTW@SWISHERCOMMERCIAL.COM

SWISHERCOMMERCIAL.COM