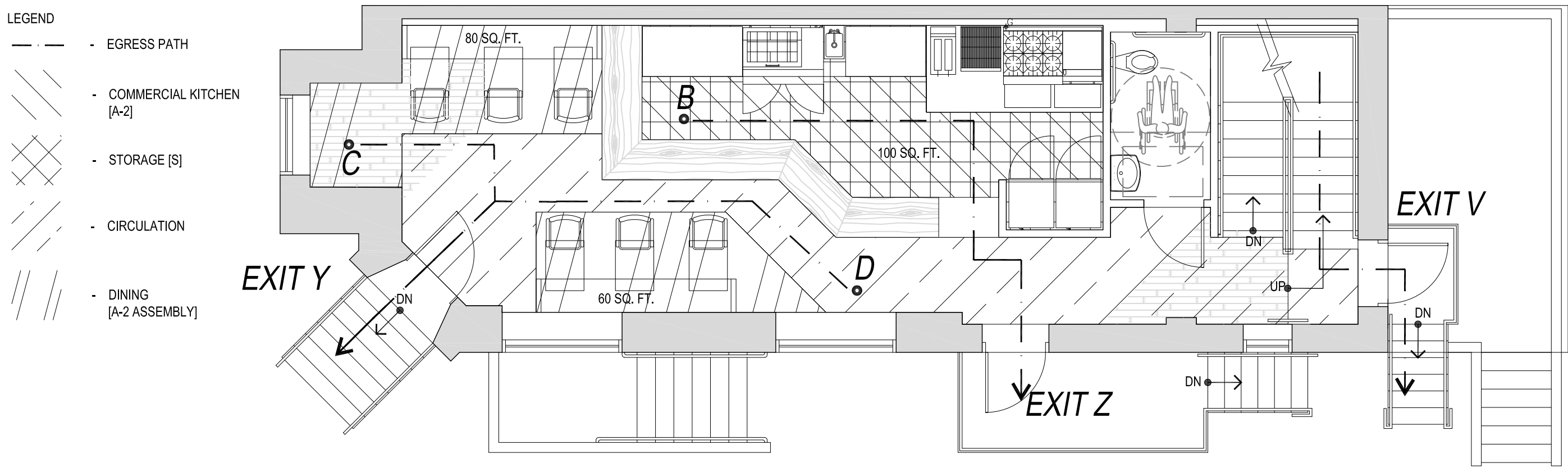
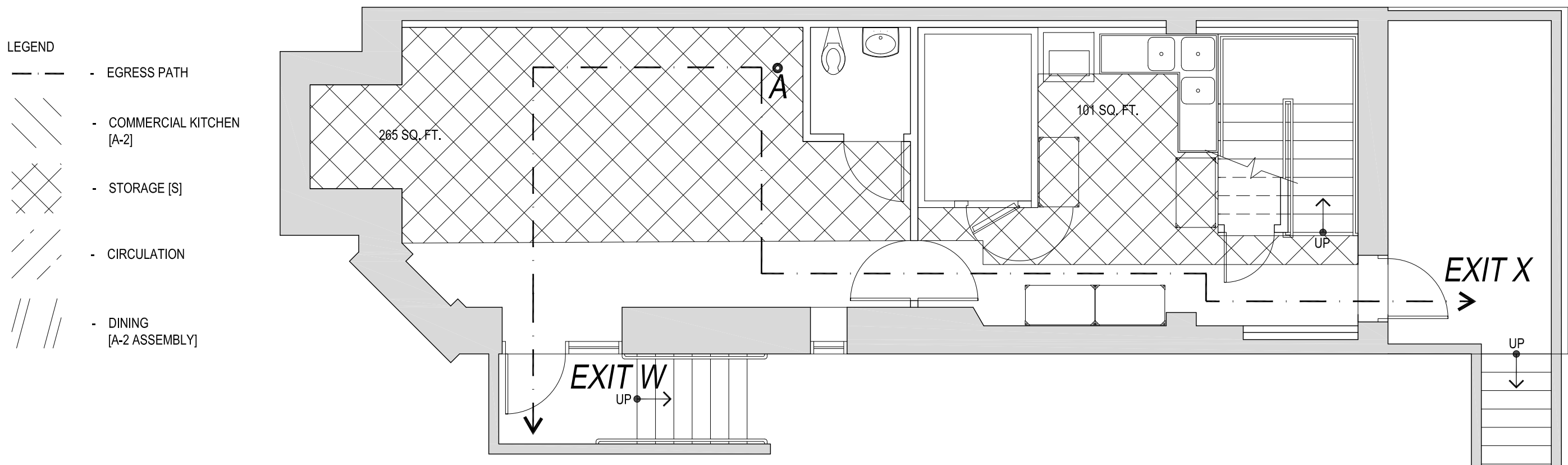


3 SECOND FLOOR EGRESS PLAN
3/16" = 1'-0"



2 FIRST FLOOR EGRESS PLAN
3/16" = 1'-0"



1 CELLAR EGRESS PLAN
3/16" = 1'-0"

OCCUPANT LOAD + EXIT CAPACITY [IBC 1004 + 1005]

CLASS/USE	SQUARE FEET PER PERSON	TOTAL SQUARE FEET	TOTAL OCCUPANCY	NOTES
COMMERCIAL KITCHEN	200 GROSS SQ FT PER PERSON	100 SQ. FT.	1 PERSON	
STORAGE	300 GROSS SQ FT PER PERSON	366 SQ. FT.	1 PERSON	
A-2 ASSEMBLY	15 GROSS SQ FT PER PERSON	150 SQ. FT. + 540 SQ. FT.	46 PEOPLE	
		TOTAL	48 PEOPLE	
TWO (5) EXITS - 36" WIDE			9 PEOPLE PER EXIT	MAX EXIT DOOR LOAD OF 180 PEOPLE PER EXIT

DISTANCE TO EXIT [IBC 1016]

STARTING POINT	EXIT	DISTANCE [natural and unobstructed path]
A	EXIT W	27'-2"
A	EXIT X	43'-10"
B	EXIT Y	53'-4"
B	EXIT Z	28'-5"
C	EXIT Y	14'-0"
D	EXIT Y	22'-3"
D	EXIT Z	15'-10"
E	EXIT V	61'-6"

MINIMUM NUMBER OF REQ'D PLUMBING FIXTURES [IBC 2902]

CLASS.	OCC.	WATER CLOSETS		LAVATORIES		DRINKING FOUNTAIN	OTHER	
		M	F	M	F			
COMM. KITCHEN	1	1 PER 100	1 PER 100	1 PER 100		N.A.		
STORAGE	1	1 PER 100	1 PER 100	1 PER 100		N.A.		
A-2 ASSEMBLY	38	1 PER 75	1 PER 75	1 PER 200		N.A.		
TOTAL REQUIRED		1	1	2		N.A.		
TOTAL PROVIDED		1.5	1.5	3		N.A.	1 SERVICE SINK	

DOOR SCHEDULE

OPENING NUMBER	D O O R					F R A M E				REMARKS	
	MATERIAL	TYPE	SIZE			MATERIAL	DETAILS				HARDWARE SET
			W	H	THK		HEAD	JAMB	THR		
1	NOT USED										
2	METAL	TYPE 1	3'-0"	7'-0"	1-3/4"		4/A002	4/A002	-	LOCKSET, CLOSER	
3	NOT USED										
4	METAL	TYPE 1	3'-0"	7'-0"	1-3/4"		4/A002	4/A002	-	PUSH/PULL, KICKPLATE, CLOSER	
5	NOT USED										
6	METAL	TYPE 1	3'-0"	7'-0"	1-3/4"		4/A002	4/A002	-	PUSH/PULL, KICKPLATE, CLOSER	
7	NOT USED										
8	NOT USED										
9	METAL	TYPE 1	3'-0"	7'-0"	1-3/4"		4/A002	4/A002	-	PUSH/PULL, KICKPLATE, CLOSER	

HARDWARE SETS

Set No. 1		
hinges	Stanley	Spring Hinge 521, satin chrome
latchset - privacy function	Taymor	Bergen
stop	Ives	FS13
kickplate	Hager	190S - 8" High, Typ, Ath Both Sides, US28
Note: All hardware to be US26 U.N.O.		
Set No. 2		
hinges	Hager	Hager 130S, US28D
push plate	Hager	Hager 30S (4" x 16"), US28
kickplate	Hager	190S - 8" High, Typ, Ath Both Sides, US28
Note: All hardware to be US26 U.N.O.		
Set No. 3		
hinges	Stanley	Spring Hinge 521, satin chrome
half dummy latchset		
latch guard	don-jo latch protector	sl
kickplate	Hager	190S - 8" High, Typ, Ath Both Sides, US28
Note: All hardware to be US26 U.N.O.		

DOOR DETAILS

4	JAMB / HEAD DETAIL 1 1/2" = 1'-0"

DOOR TYPES

TYPE 1	
TYPE 2	

//3877

3333 K STREET NW, SUITE 60
WASHINGTON, DC 20007
[T] 202.350.4244
[F] 202.350.4245
[W] WWW.3877.DESIGN

Copyright Notice

STUDIO3877 expressly reserves its common law copyright and other property rights to these plans. these plans are not to be reproduced, changed, or copied in any form or manner whatsoever, nor are they to be assigned to any third party, without first obtaining the express written permission and consent of STUDIO3877.

Consultants

DRAWING DATA

PROJECT: SECOND COUSIN LLC
ADDRESS: 786 HARVARD STREET NW
WASHINGTON, DC 20001

REVISION NO: ISSUED DATE:
.01 ISSUED FOR REVIEW - 05.04.16
.02 ISSUED FOR REVISION - 11.10.16

SEAL & SIGNATURE:



DRAWING: EGRESS INFORMATION | SCHEDULES
PROJECT NO: 2016.46
DATE: 04 MAY 2016
SCALE: AS NOTED

A.0002