

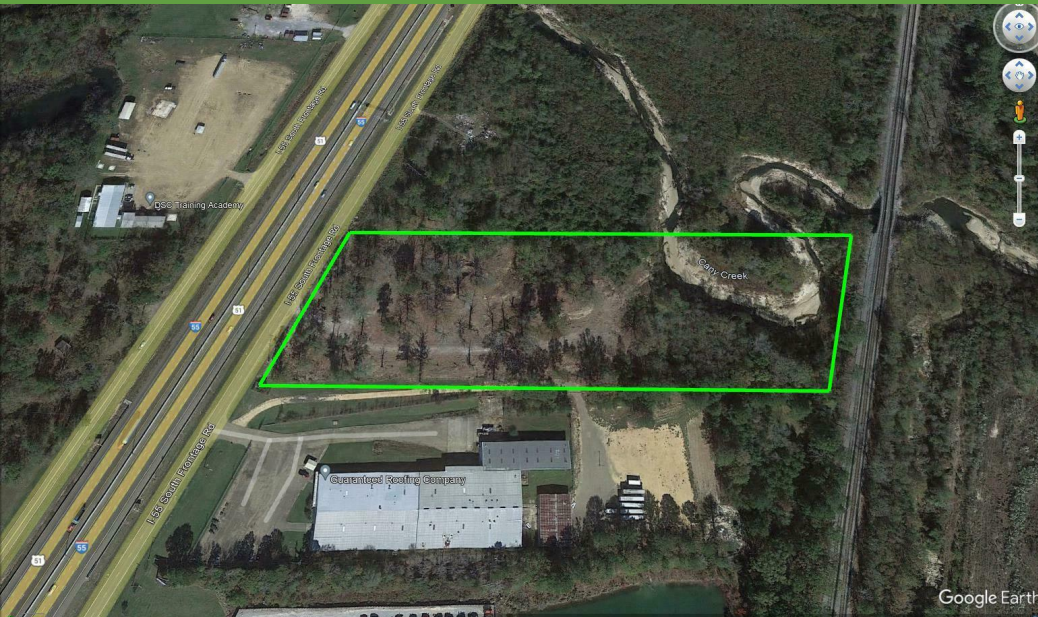
I-55 South Frontage Road Commercial / Industrial / Mobile Home Park Land

3542 I-55 FRONTAGE ROAD, JACKSON, MS 39212

FOR SALE
\$750,000
Land

PROPERTY FEATURES

Ten acre parcel with great interstate visibility. 400' Frontage on I-55 South Frontage road, with Annual Average Daily Traffic (AADT) of 55,000 vehicles daily. The property is currently zoned for a manufactured home community and was previously used as a mobile home park. Industrial properties are adjacent to this parcel which make industrial rezoning approval probable. The northeast portion of the property is bounded by Caney Creek with some flood plain. Plenty of usable/buildable property along the frontage.



JD JOHNSON REALTY

www.SperryCGA.com

Jon-David Johnson, CCIM

COMMERCIAL/INVESTMENT REAL ESTATE ADVISOR

601.707.5555

jondavid.johnson@sperrycga.com

MS #B-17543

Each office independently owned and operated.

We obtained the information above from sources we believe to be reliable. However, we have not verified its accuracy and make no guarantee, warranty or representation about it. It is submitted subject to the possibility of errors, omissions, change of price, rental or other conditions, prior sale, lease or financing, or withdrawal without notice. We include projections, opinions, assumptions or estimates for example only, and they may not represent current or future performance of the property. You and your tax and legal advisors should conduct your own investigation of the property and transaction.