



FOR LEASE

BAYMEADOWS PROFESSIONAL CENTER

4201-4217 BAYMEADOWS ROAD
JACKSONVILLE, FLORIDA 32217



FOR LEASE

BAYMEADOWS PROFESSIONAL CENTER

4201 - 4217 BAYMEADOWS ROAD • JACKSONVILLE, FLORIDA 32217

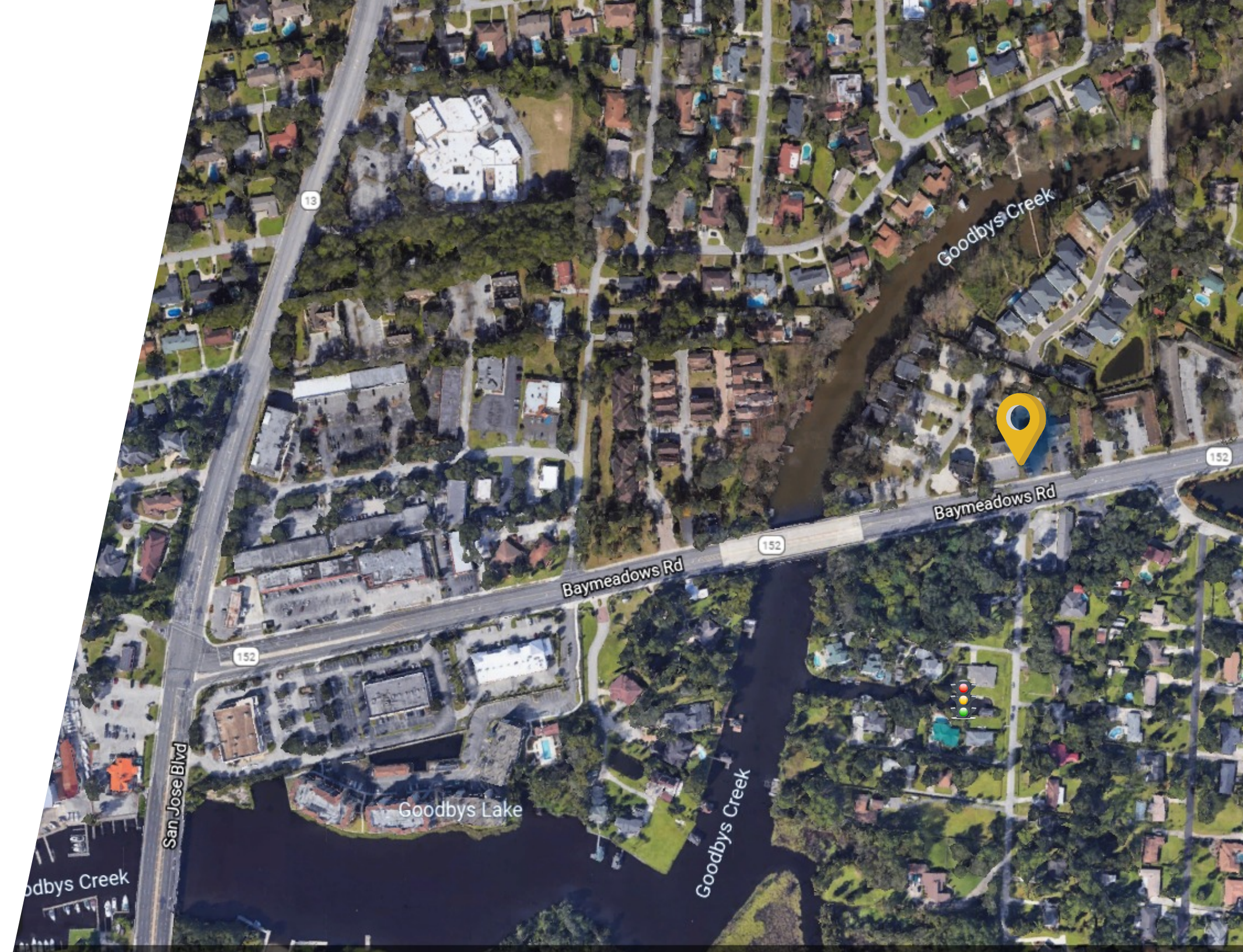


BUILDING AMENITIES

- Excellent visibility on Baymeadows Road, prominent signage available
- Ample parking for staff, clients and customers
- Efficient layouts for small businesses and startups featuring private offices, reception area, restrooms and break area.

PROPERTY HIGHLIGHTS

- Prime Commercial area near Mandarin and San Marco
- Monument signage on busy Baymeadows Road
- Property management staff nearby

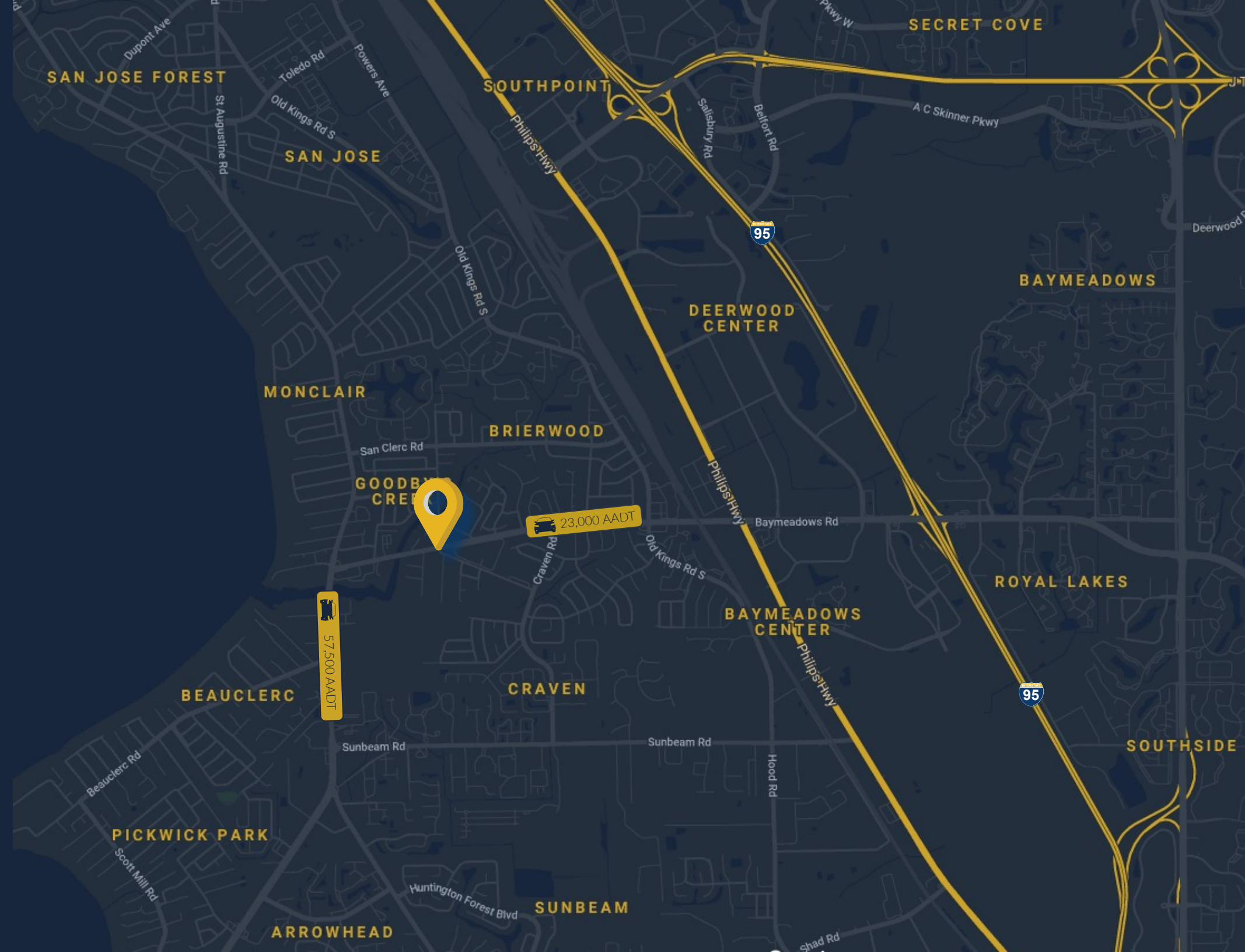




BAYMEADOWS PROFESSIONAL CENTER

BUILDING FEATURES	
TOTAL SQ. FT.	14,043 SF
TOTAL AVAILABLE	+ 2,253 SF
LEASE RATE	Negotiable
ZONING	CO

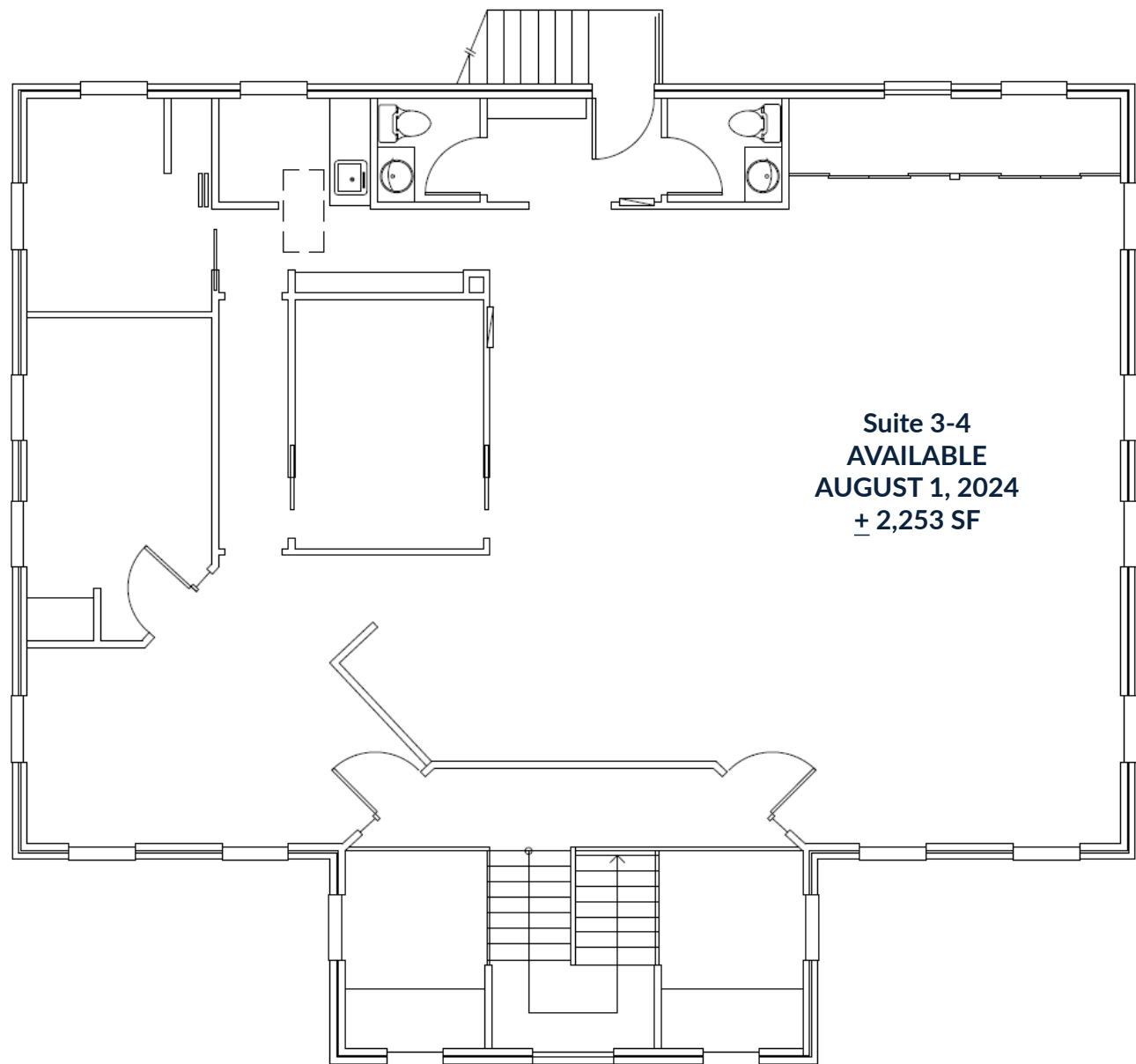
DEMOGRAPHICS	1 MILE	3 MILES	5 MILES
POPULATION	12,011	62,712	160,394
HOUSEHOLDS	5,355	28,086	68,615
MEDIAN HH INCOME	\$55,893	\$54,696	\$60,188
AVERAGE HH INCOME	\$80,893	\$75,269	\$81,833



FOR LEASE

BAYMEADOWS PROFESSIONAL CENTER

4217 BAYMEADOWS ROAD • JACKSONVILLE, FLORIDA 32217



Suite 3-4
AVAILABLE
AUGUST 1, 2024
± 2,253 SF

2ND FLOOR





John Hodges, Director of Real Estate Services

leasing@imc-jax.com

7915 Baymeadows Way
Suite 400
Jacksonville, FL 32256

T: 904.737.8846

www.imc-jax.com

