

3,000 - 18,579 SF
OFFICE SPACE



FOR SUBLEASE



ASKING RATE \$11.95 PSF GROSS

Bingham Office Center

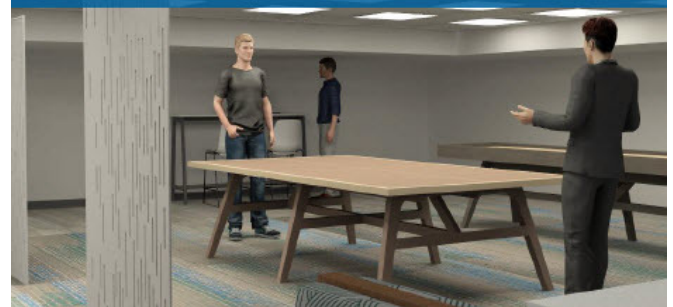
30800 Telegraph Rd, Suite 3800
Bingham Farms, Michigan 48025

Property Highlights

- Aggressive Lease Rates
- Furnished Sublease / Bingham Farms Office Center
- 3,000-18,000 RSF on Third Floor, Can be Divided
- Lease Runs Through 2027
- Turnkey Renovations – Two Kitchenettes, Dozen Offices, Large Open Area, Conference Room
- Prime Telegraph Bingham Farms Location
- Surrounded by a Variety of Restaurants, Hotels and Other Service Businesses



BUILDING LOUNGE AND BREAKROOM!



Commercial Real Estate Services, Worldwide.

www.naifarbman.com

Wendy Acho

Leasing and Sales Associate | 248.563.0739
acho@farbman.com

Sheila Fogarty

Senior Vice President | 248.798.9813
fogarty@farbman.com

NO WARRANTY, EXPRESS OR IMPLIED, IS MADE AS TO THE ACCURACY OF THE INFORMATION CONTAINED HEREIN. THIS INFORMATION IS SUBMITTED SUBJECT TO ERRORS, OMISSIONS, CHANGE OF PRICE, RENTAL OR OTHER CONDITIONS, WITHDRAWAL WITHOUT NOTICE, AND IS SUBJECT TO ANY SPECIAL LISTING CONDITIONS IMPOSED BY OUR PRINCIPALS. COOPERATING BROKERS, BUYERS, TENANTS AND OTHER PARTIES WHO RECEIVE THIS DOCUMENT SHOULD NOT RELY ON IT, BUT SHOULD USE IT AS A STARTING POINT OF ANALYSIS, AND SHOULD INDEPENDENTLY CONFIRM THE ACCURACY OF THE INFORMATION CONTAINED HEREIN THROUGH A DUE DILIGENCE REVIEW OF THE BOOKS, RECORDS, FILES AND DOCUMENTS THAT CONSTITUTE RELIABLE SOURCES OF THE INFORMATION DESCRIBED HEREIN. LOGOS ARE FOR IDENTIFICATION PURPOSES ONLY AND MAY BE TRADEMARKS OF THEIR RESPECTIVE COMPANIES. NAI Farbman, INC. CA BRE LIC. #01990696.

3,000 - 18,579 SF
OFFICE SPACE



FOR SUBLEASE



NAI Farbman

Commercial Real Estate Services, Worldwide.

www.naifarbman.com

Wendy Acho

Leasing and Sales Associate | 248.563.0739
acho@farbman.com

Sheila Fogarty

Senior Vice President | 248.798.9813
fogarty@farbman.com

NO WARRANTY, EXPRESS OR IMPLIED, IS MADE AS TO THE ACCURACY OF THE INFORMATION CONTAINED HEREIN. THIS INFORMATION IS SUBMITTED SUBJECT TO ERRORS, OMISSIONS, CHANGE OF PRICE, RENTAL OR OTHER CONDITIONS, WITHDRAWAL WITHOUT NOTICE, AND IS SUBJECT TO ANY SPECIAL LISTING CONDITIONS IMPOSED BY OUR PRINCIPALS. COOPERATING BROKERS, BUYERS, TENANTS AND OTHER PARTIES WHO RECEIVE THIS DOCUMENT SHOULD NOT RELY ON IT, BUT SHOULD USE IT AS A STARTING POINT OF ANALYSIS, AND SHOULD INDEPENDENTLY CONFIRM THE ACCURACY OF THE INFORMATION CONTAINED HEREIN THROUGH A DUE DILIGENCE REVIEW OF THE BOOKS, RECORDS, FILES AND DOCUMENTS THAT CONSTITUTE RELIABLE SOURCES OF THE INFORMATION DESCRIBED HEREIN. LOGOS ARE FOR IDENTIFICATION PURPOSES ONLY AND MAY BE TRADEMARKS OF THEIR RESPECTIVE COMPANIES. NAI Farbman, INC. CA BRE LIC. #01990696.

3,000 - 18,579 SF
OFFICE SPACE



FOR SUBLEASE



NAI Farbman

Commercial Real Estate Services, Worldwide.
www.naifarbman.com

Wendy Acho

Leasing and Sales Associate | 248.563.0739
acho@farbman.com

Sheila Fogarty

Senior Vice President | 248.798.9813
fogarty@farbman.com

NO WARRANTY, EXPRESS OR IMPLIED, IS MADE AS TO THE ACCURACY OF THE INFORMATION CONTAINED HEREIN. THIS INFORMATION IS SUBMITTED SUBJECT TO ERRORS, OMISSIONS, CHANGE OF PRICE, RENTAL OR OTHER CONDITIONS, WITHDRAWAL WITHOUT NOTICE, AND IS SUBJECT TO ANY SPECIAL LISTING CONDITIONS IMPOSED BY OUR PRINCIPALS. COOPERATING BROKERS, BUYERS, TENANTS AND OTHER PARTIES WHO RECEIVE THIS DOCUMENT SHOULD NOT RELY ON IT, BUT SHOULD USE IT AS A STARTING POINT OF ANALYSIS, AND SHOULD INDEPENDENTLY CONFIRM THE ACCURACY OF THE INFORMATION CONTAINED HEREIN THROUGH A DUE DILIGENCE REVIEW OF THE BOOKS, RECORDS, FILES AND DOCUMENTS THAT CONSTITUTE RELIABLE SOURCES OF THE INFORMATION DESCRIBED HEREIN. LOGOS ARE FOR IDENTIFICATION PURPOSES ONLY AND MAY BE TRADEMARKS OF THEIR RESPECTIVE COMPANIES. NAI Farbman, INC. CA BRE LIC. #01990696.

3,000 - 18,579 SF OFFICE SPACE



FOR SUBLEASE



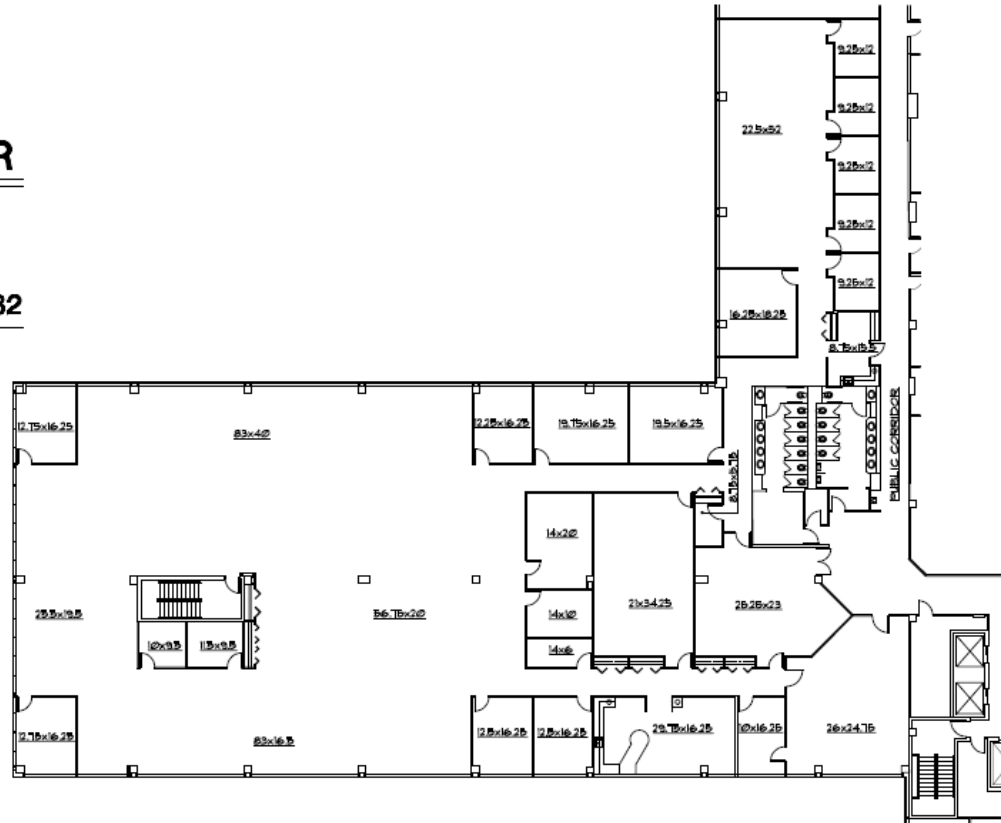
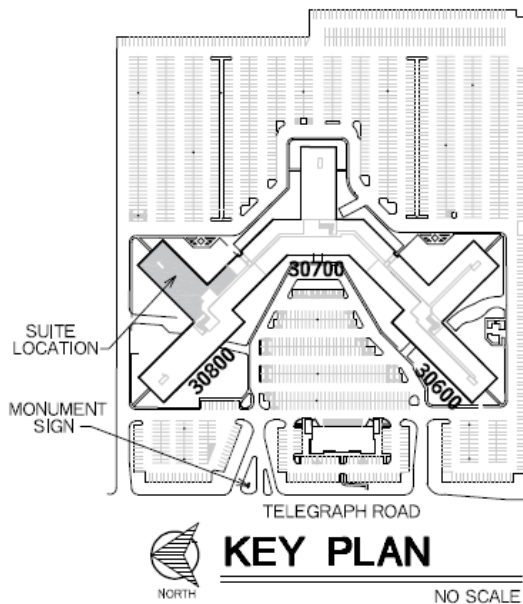
BINGHAM OFFICE CENTER

BINGHAM FARMS, MI 48025

CONTACT:

SHEILA FOGARTY (248) 686-5982

- * Newly renovated complex
- * 24 hour security system
- * After hours security guard on site
- * Cafe, Sundry shop and ATM
- * Professional on site management and maintenance
- * Efficient energy management system
- * Ample parking
- * Easy access to all major thoroughfares



SUITE 3800

18,579 R.S.F. SCALE: 1/32" = 1'-0"

NAI Farberman
Commercial Real Estate Services, Worldwide.

NAI Farberman

Commercial Real Estate Services, Worldwide.

www.naifarberman.com

Wendy Acho

Leasing and Sales Associate | 248.563.0739
acho@farberman.com

Sheila Fogarty

Senior Vice President | 248.798.9813
fogarty@farberman.com

NO WARRANTY, EXPRESS OR IMPLIED, IS MADE AS TO THE ACCURACY OF THE INFORMATION CONTAINED HEREIN. THIS INFORMATION IS SUBMITTED SUBJECT TO ERRORS, OMISSIONS, CHANGE OF PRICE, RENTAL OR OTHER CONDITIONS, WITHDRAWAL WITHOUT NOTICE, AND IS SUBJECT TO ANY SPECIAL LISTING CONDITIONS IMPOSED BY OUR PRINCIPALS. COOPERATING BROKERS, BUYERS, TENANTS AND OTHER PARTIES WHO RECEIVE THIS DOCUMENT SHOULD NOT RELY ON IT, BUT SHOULD USE IT AS A STARTING POINT OF ANALYSIS, AND SHOULD INDEPENDENTLY CONFIRM THE ACCURACY OF THE INFORMATION CONTAINED HEREIN THROUGH A DUE DILIGENCE REVIEW OF THE BOOKS, RECORDS, FILES AND DOCUMENTS THAT CONSTITUTE RELIABLE SOURCES OF THE INFORMATION DESCRIBED HEREIN. LOGOS ARE FOR IDENTIFICATION PURPOSES ONLY AND MAY BE TRADEMARKS OF THEIR RESPECTIVE COMPANIES. NAI Farberman, INC. CA BRE LIC. #01990696.