



4550 King Avenue E
Lot 6A-1 1.00 Acres
 Billings, Montana 59101

Property Highlights

- SOUTH BILLINGS TOWN CENTER
- Sam's Club & Cabela's Anchored Center
- I-90 and South Billings Blvd Interchange
- 1.0 Acre pad site
- Sale price: \$784,080

Property Description

Development land available for Sale in the South Billings Town Center located off of King Avenue East next to Cabela's. Excellent location for your business near Interstate 90 and South Billings Boulevard. All businesses have a great exposure rate with thousands of vehicles traveling this way every day.

OFFERING SUMMARY

Sale Price:	\$18.00 / SF
Lot Size:	1.00 Acres

DEMOGRAPHICS

	1 MILE	2 MILES	3 MILES
Total Households	2,690	10,305	20,958
Total Population	6,265	22,490	43,150
Average HH Income	\$56,345	\$57,311	\$58,629

Brian McDonald
 Broker/Principal | 406.294.6303
 bmcDonald@naibusinessproperties.com





Google

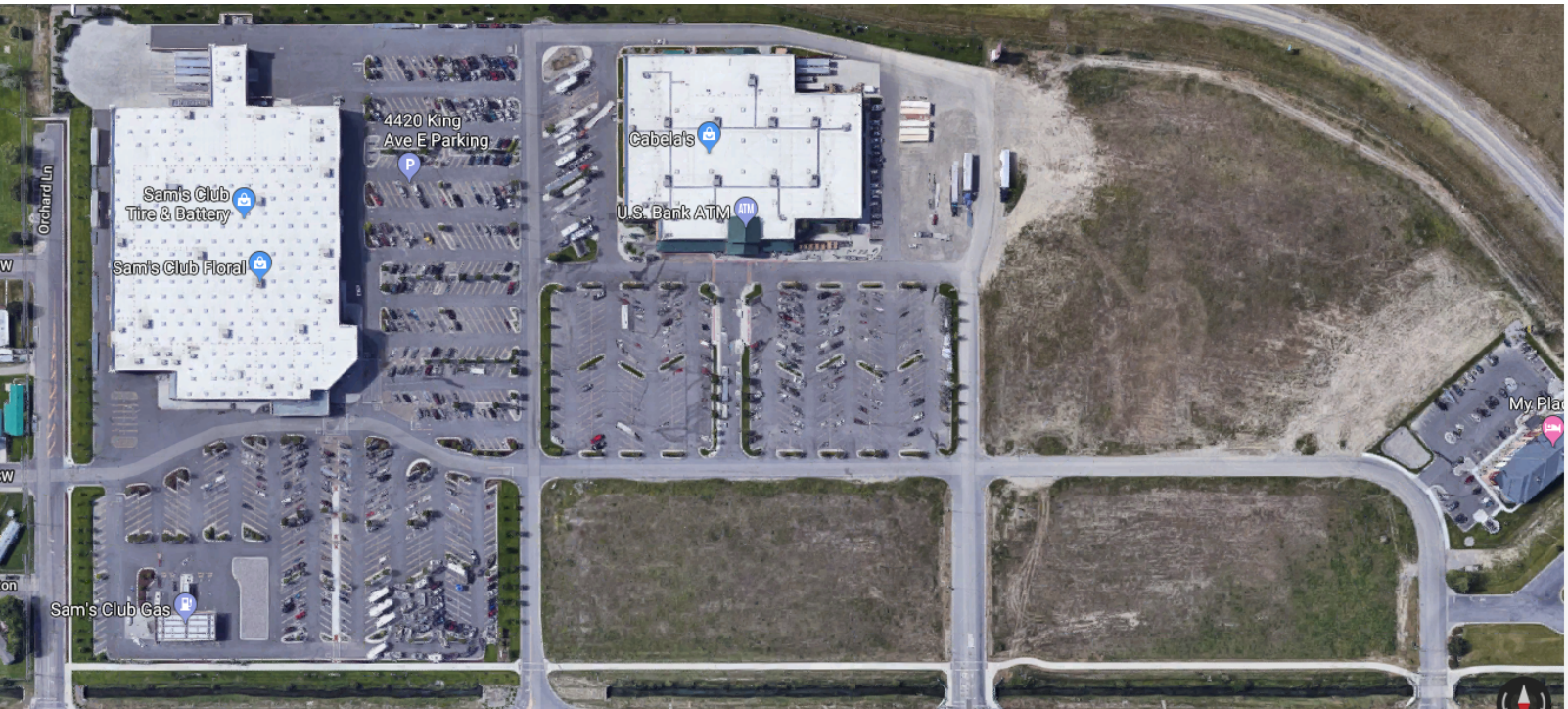
Imagery ©2023 , Airbus, CNES / Airbus, Maxar Technologies, USDA/FPAC/GEO

Brian McDonald
 Broker/Principal | 406.294.6303
 bmcDonald@naibusinessproperties.com



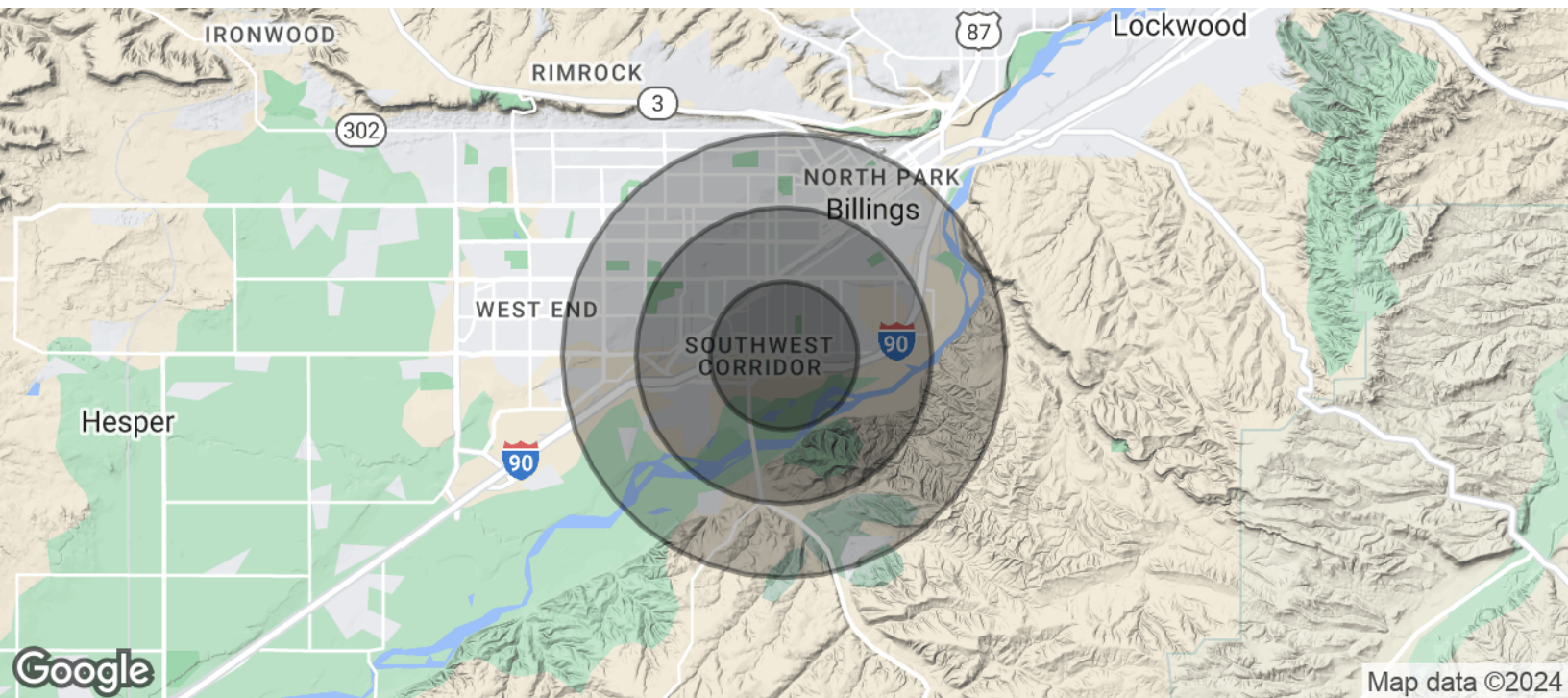
<https://www.naibusinessproperties.com>

NO WARRANTY OR REPRESENTATION, EXPRESS OR IMPLIED, IS MADE AS TO THE ACCURACY OF THE INFORMATION CONTAINED HEREIN, AND THE SAME IS SUBMITTED SUBJECT TO ERRORS, OMISSIONS, CHANGE OF PRICE, RENTAL OR OTHER CONDITIONS, PRIOR SALE, LEASE OR FINANCING, OR WITHDRAWAL WITHOUT NOTICE, AND OF ANY SPECIAL LISTING CONDITIONS IMPOSED BY OUR PRINCIPALS NO WARRANTIES OR REPRESENTATIONS ARE MADE AS TO THE CONDITION OF THE PROPERTY OR ANY HAZARDS CONTAINED THEREIN ARE ANY TO BE IMPLIED.



Brian McDonald
 Broker/Principal | 406.294.6303
 bmcDonald@naibusinessproperties.com





Map data ©2024

POPULATION	1 MILE	2 MILES	3 MILES
Total Population	6,265	22,490	43,150
Average age	36.8	36.1	36.7
Average age (Male)	36.9	34.3	34.3
Average age (Female)	39.0	38.9	39.4
HOUSEHOLDS & INCOME	1 MILE	2 MILES	3 MILES
Total households	2,690	10,305	20,958
# of persons per HH	2.3	2.2	2.1
Average HH income	\$56,345	\$57,311	\$58,629
Average house value	\$167,801	\$174,391	\$187,795

* Demographic data derived from 2020 ACS - US Census

Brian McDonald
 Broker/Principal | 406.294.6303
 bmcdonald@naibusinessproperties.com

