

# Flex Space in Washington County

9953 SW ARCTIC DRIVE | BEAVERTON, OR 97005



Skip Rotticci, CCIM  
503.972.7284  
skip@macadamforbes.com  
Licensed in OR

2 Centerpointe Drive, Suite 500 | Lake Oswego, OR 97035 | [WWW.MACADAMFORBES.COM](http://WWW.MACADAMFORBES.COM) | 503.227.2500

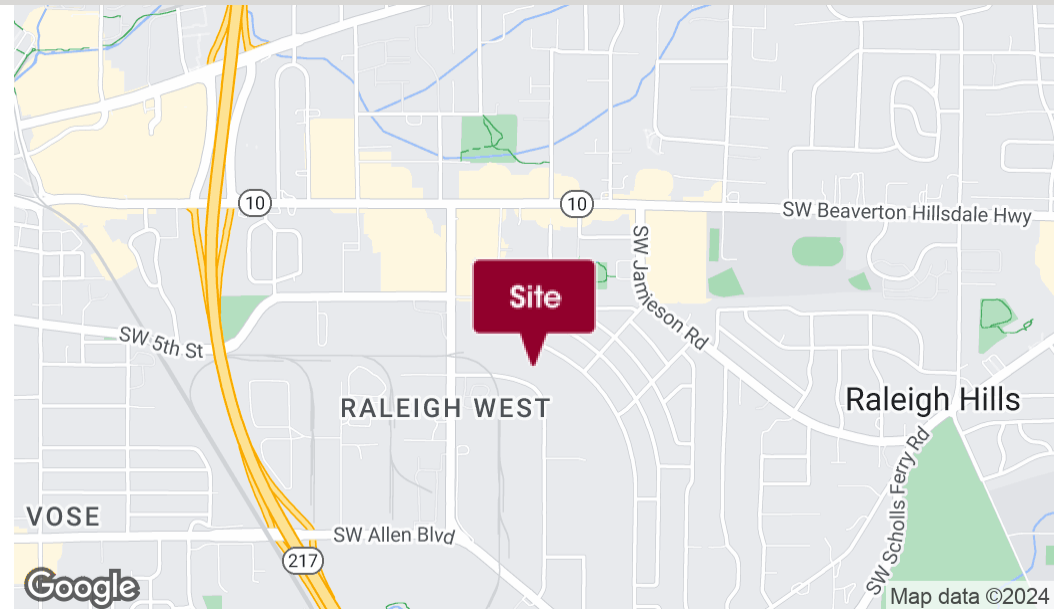
All of the information contained herein was obtained either from the owner or other parties we consider reliable. We have no reason to doubt its accuracy, however we do not guarantee it.

**FOR LEASE**



# FOR LEASE

9953 SW Arctic Drive, Beaverton, OR 97005



## PROPERTY DESCRIPTION

Concrete tilt flex space with 3,030 square feet of finished office with two restrooms, kitchen, reception area, three private offices, and bullpen. Owner has the ability to demise up to approximately 1,200 square feet of warehouse space with grade door.

## PROPERTY HIGHLIGHTS

- 3,030 SF office
- Partially Furnished
- Up to 1,200 SF warehouse available
- 12' grade-level door
- 16' clear height

## LOCATION DESCRIPTION

This property is located on Arctic Drive in the highly desirable Beaverton Industrial/Flex submarket. The property offers convenient proximity to retail shops, commercial services, restaurants, and area amenities and is easily accessible to Highway 217 & Beaverton-Hillsdale Highway.

## OFFERING SUMMARY

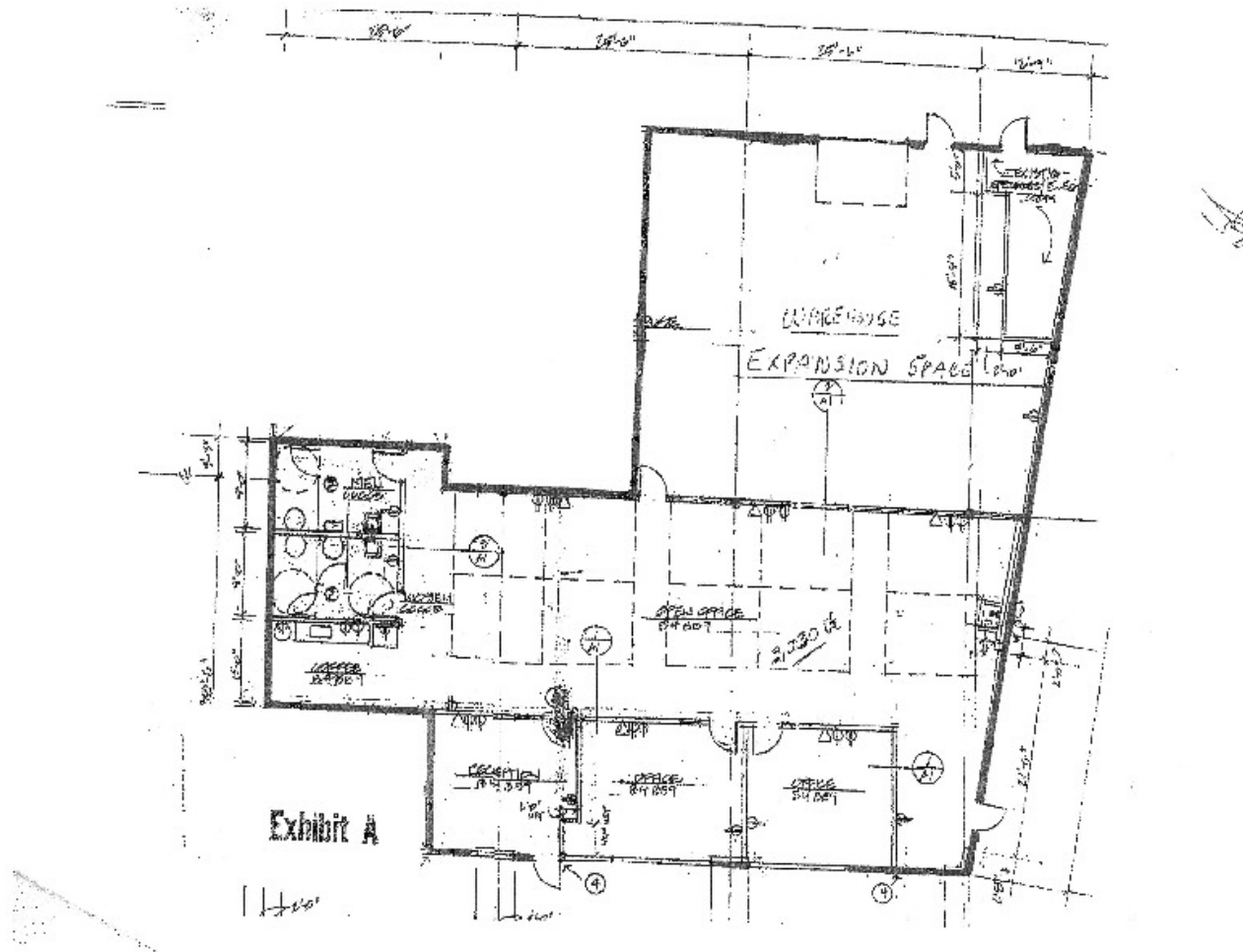
Lease Rate:	Negotiable
Available SF:	Fully Leased
Building Size:	11,200 SF



**Skip Rotticci, CCIM**  
503.972.7284  
skip@macadamforbes.com  
Licensed in OR

# FOR LEASE

9953 SW Arctic Drive, Beaverton, OR 97005



**Skip Rotticci, CCIM**  
503.972.7284  
skip@macadamforbes.com  
Licensed in OR

All of the information contained herein was obtained either from the owner or other parties we consider reliable. We have no reason to doubt its accuracy, however we do not guarantee it.

MACADAMFORBES.COM | 503.227.2500