

1,200 - 12,600 SF  
RETAIL



FOR SALE/LEASE



## Inglewood Retail Park

5950 & 5960 S State St, Ann Arbor, Michigan 48108

### Property Highlights

- Brand New State of the Art Construction, All Utilities & Services are in Place, Ready to Begin Interior Improvements.
- Individual Tenant Spaces will be Delivered by Owner in a White Box Condition. Buildings are Currently in a Grey Box Condition, making it Easy to Design the Perfect Space for your Individual Business Needs.
- Located Directly Across the Street from Avis Farms, A Well Established High- Tech Research Park with Strong Occupancy and Dense Employment Base.
- This Multi Building Development is Located on S State St Directly In Front of Inglewood Subdivision, Containing 106 Single Family Homes Along with 86 Condominium Units. Inglewood Phase II will have 220 Additional Units.
- Textile Road was Recently Improved and Has a Direct Route From Michigan Ave (M-12) to S. State Street
- Major Retailers within the Immediate Trade Area are: Briarwood Mall, Cosco, and Wal Mart
- Site is Easily Accessible to I-94. US-23. Michigan Ave & M-14.

### OFFERING SUMMARY

Retail Lease Rate:	\$22.00 SF/yr (NNN)
Available SF:	1,200 - 12,600 SF
Sale Price:	Contact Listing Agent(s)
Building Size:	12,600 SF

DEMOGRAPHICS	1 MILE	3 MILES	5 MILES
Total Households	530	12,414	47,566
Total Population	1,490	29,944	113,234
Average HH Income	\$169,694	\$109,437	\$103,820

**NAI Farbman**

Commercial Real Estate Services, Worldwide.

www.naifarbman.com

**Ron Goldstone**

Executive Vice President | 248.351.4371  
goldstone@farbman.com

**Brandon Ben-Ezra**

Leasing and Sales Associate | 947.517.6226  
ben-ezra@farbman.com

NO WARRANTY, EXPRESS OR IMPLIED, IS MADE AS TO THE ACCURACY OF THE INFORMATION CONTAINED HEREIN. THIS INFORMATION IS SUBMITTED SUBJECT TO ERRORS, OMISSIONS, CHANGE OF PRICE, RENTAL OR OTHER CONDITIONS, WITHDRAWAL WITHOUT NOTICE, AND IS SUBJECT TO ANY SPECIAL LISTING CONDITIONS IMPOSED BY OUR PRINCIPALS. COOPERATING BROKERS, BUYERS, TENANTS AND OTHER PARTIES WHO RECEIVE THIS DOCUMENT SHOULD NOT RELY ON IT, BUT SHOULD USE IT AS A STARTING POINT OF ANALYSIS, AND SHOULD INDEPENDENTLY CONFIRM THE ACCURACY OF THE INFORMATION CONTAINED HEREIN THROUGH A DUE DILIGENCE REVIEW OF THE BOOKS, RECORDS, FILES AND DOCUMENTS THAT CONSTITUTE RELIABLE SOURCES OF THE INFORMATION DESCRIBED HEREIN. LOGOS ARE FOR IDENTIFICATION PURPOSES ONLY AND MAY BE TRADEMARKS OF THEIR RESPECTIVE COMPANIES. NAI Farbman, INC. CA BRE LIC. #01990696.



1,200 - 12,600 SF  
RETAIL



FOR SALE/LEASE



**NAI Farbman**

Commercial Real Estate Services, Worldwide.

[www.naifarbman.com](http://www.naifarbman.com)

**Ron Goldstone**

Executive Vice President | 248.351.4371  
[goldstone@farbman.com](mailto:goldstone@farbman.com)

NO WARRANTY, EXPRESS OR IMPLIED, IS MADE AS TO THE ACCURACY OF THE INFORMATION CONTAINED HEREIN. THIS INFORMATION IS SUBMITTED SUBJECT TO ERRORS, OMISSIONS, CHANGE OF PRICE, RENTAL OR OTHER CONDITIONS, WITHDRAWAL WITHOUT NOTICE, AND IS SUBJECT TO ANY SPECIAL LISTING CONDITIONS IMPOSED BY OUR PRINCIPALS. COOPERATING BROKERS, BUYERS, TENANTS AND OTHER PARTIES WHO RECEIVE THIS DOCUMENT SHOULD NOT RELY ON IT, BUT SHOULD USE IT AS A STARTING POINT OF ANALYSIS, AND SHOULD INDEPENDENTLY CONFIRM THE ACCURACY OF THE INFORMATION CONTAINED HEREIN THROUGH A DUE DILIGENCE REVIEW OF THE BOOKS, RECORDS, FILES AND DOCUMENTS THAT CONSTITUTE RELIABLE SOURCES OF THE INFORMATION DESCRIBED HEREIN. LOGOS ARE FOR IDENTIFICATION PURPOSES ONLY AND MAY BE TRADEMARKS OF THEIR RESPECTIVE COMPANIES. NAI Farbman, INC. CA BRE LIC. #01990696.

**Brandon Ben-Ezra**

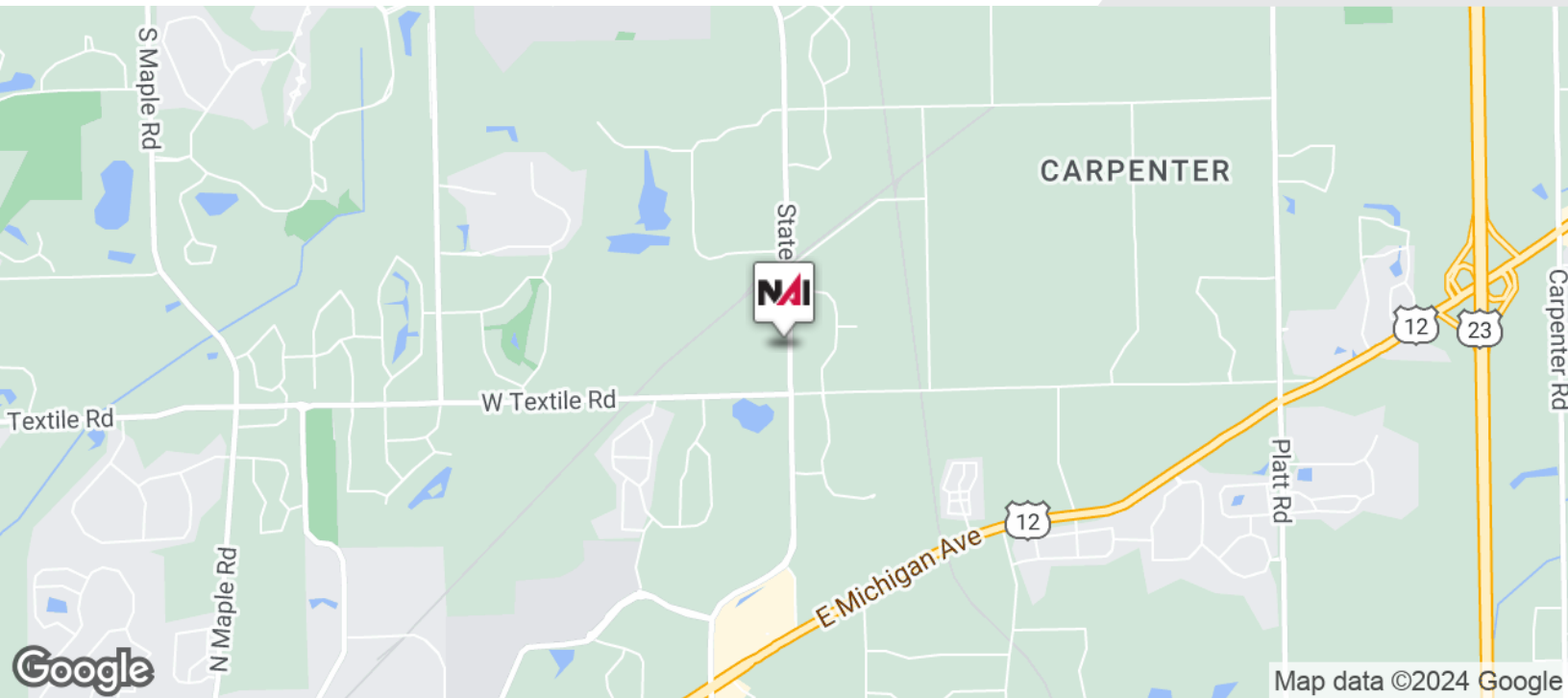
Leasing and Sales Associate | 947.517.6226  
[ben-ezra@farbman.com](mailto:ben-ezra@farbman.com)



1,200 - 12,600 SF  
RETAIL



FOR SALE/LEASE



**NAI Farbman**

Commercial Real Estate Services, Worldwide.  
[www.naifarbman.com](http://www.naifarbman.com)

**Ron Goldstone**  
Executive Vice President | 248.351.4371  
[goldstone@farbman.com](mailto:goldstone@farbman.com)

**Brandon Ben-Ezra**  
Leasing and Sales Associate | 947.517.6226  
[ben-ezra@farbman.com](mailto:ben-ezra@farbman.com)

NO WARRANTY, EXPRESS OR IMPLIED, IS MADE AS TO THE ACCURACY OF THE INFORMATION CONTAINED HEREIN. THIS INFORMATION IS SUBMITTED SUBJECT TO ERRORS, OMISSIONS, CHANGE OF PRICE, RENTAL OR OTHER CONDITIONS, WITHDRAWAL WITHOUT NOTICE, AND IS SUBJECT TO ANY SPECIAL LISTING CONDITIONS IMPOSED BY OUR PRINCIPALS. COOPERATING BROKERS, BUYERS, TENANTS AND OTHER PARTIES WHO RECEIVE THIS DOCUMENT SHOULD NOT RELY ON IT, BUT SHOULD USE IT AS A STARTING POINT OF ANALYSIS, AND SHOULD INDEPENDENTLY CONFIRM THE ACCURACY OF THE INFORMATION CONTAINED HEREIN THROUGH A DUE DILIGENCE REVIEW OF THE BOOKS, RECORDS, FILES AND DOCUMENTS THAT CONSTITUTE RELIABLE SOURCES OF THE INFORMATION DESCRIBED HEREIN. LOGOS ARE FOR IDENTIFICATION PURPOSES ONLY AND MAY BE TRADEMARKS OF THEIR RESPECTIVE COMPANIES. NAI Farbman, INC. CA BRE LIC. #01990696.



1,200 - 12,600 SF  
RETAIL



FOR SALE/LEASE



**NAI Farbman**

Commercial Real Estate Services, Worldwide.

www.naifarbman.com

**Ron Goldstone**

Executive Vice President | 248.351.4371  
goldstone@farbman.com

**Brandon Ben-Ezra**

Leasing and Sales Associate | 947.517.6226  
ben-ezra@farbman.com

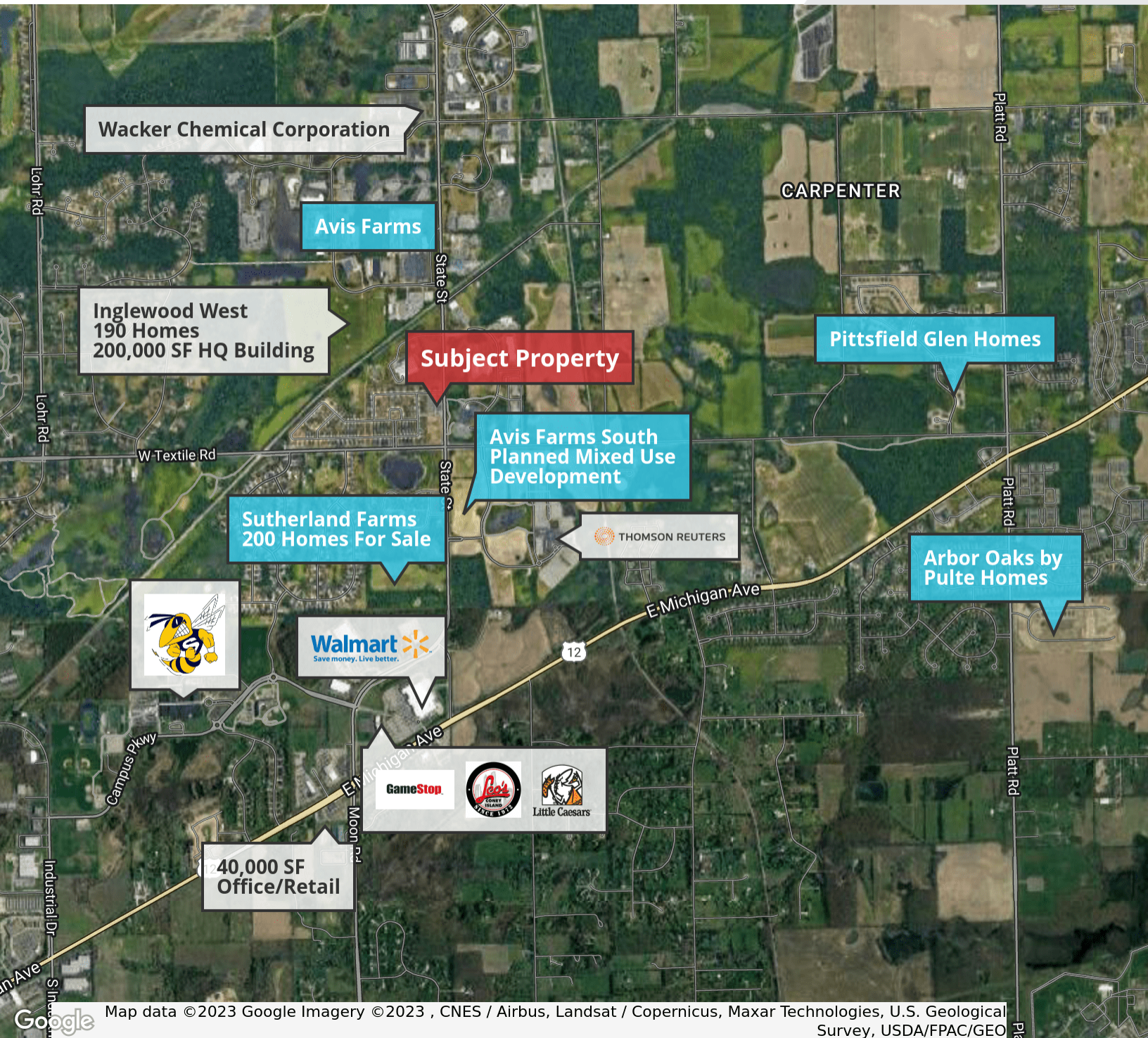
NO WARRANTY, EXPRESS OR IMPLIED, IS MADE AS TO THE ACCURACY OF THE INFORMATION CONTAINED HEREIN. THIS INFORMATION IS SUBMITTED SUBJECT TO ERRORS, OMISSIONS, CHANGE OF PRICE, RENTAL OR OTHER CONDITIONS, WITHDRAWAL WITHOUT NOTICE, AND IS SUBJECT TO ANY SPECIAL LISTING CONDITIONS IMPOSED BY OUR PRINCIPALS. COOPERATING BROKERS, BUYERS, TENANTS AND OTHER PARTIES WHO RECEIVE THIS DOCUMENT SHOULD NOT RELY ON IT, BUT SHOULD USE IT AS A STARTING POINT OF ANALYSIS, AND SHOULD INDEPENDENTLY CONFIRM THE ACCURACY OF THE INFORMATION CONTAINED HEREIN THROUGH A DUE DILIGENCE REVIEW OF THE BOOKS, RECORDS, FILES AND DOCUMENTS THAT CONSTITUTE RELIABLE SOURCES OF THE INFORMATION DESCRIBED HEREIN. LOGOS ARE FOR IDENTIFICATION PURPOSES ONLY AND MAY BE TRADEMARKS OF THEIR RESPECTIVE COMPANIES. NAI Farbman, INC. CA BRE LIC. #01990696.



1,200 - 12,600 SF  
RETAIL



FOR SALE/LEASE



**NAI Farbman**

Commercial Real Estate Services, Worldwide.  
www.naifarbman.com

**Ron Goldstone**  
Executive Vice President | 248.351.4371  
goldstone@farbman.com

**Brandon Ben-Ezra**  
Leasing and Sales Associate | 947.517.6226  
ben-ezra@farbman.com

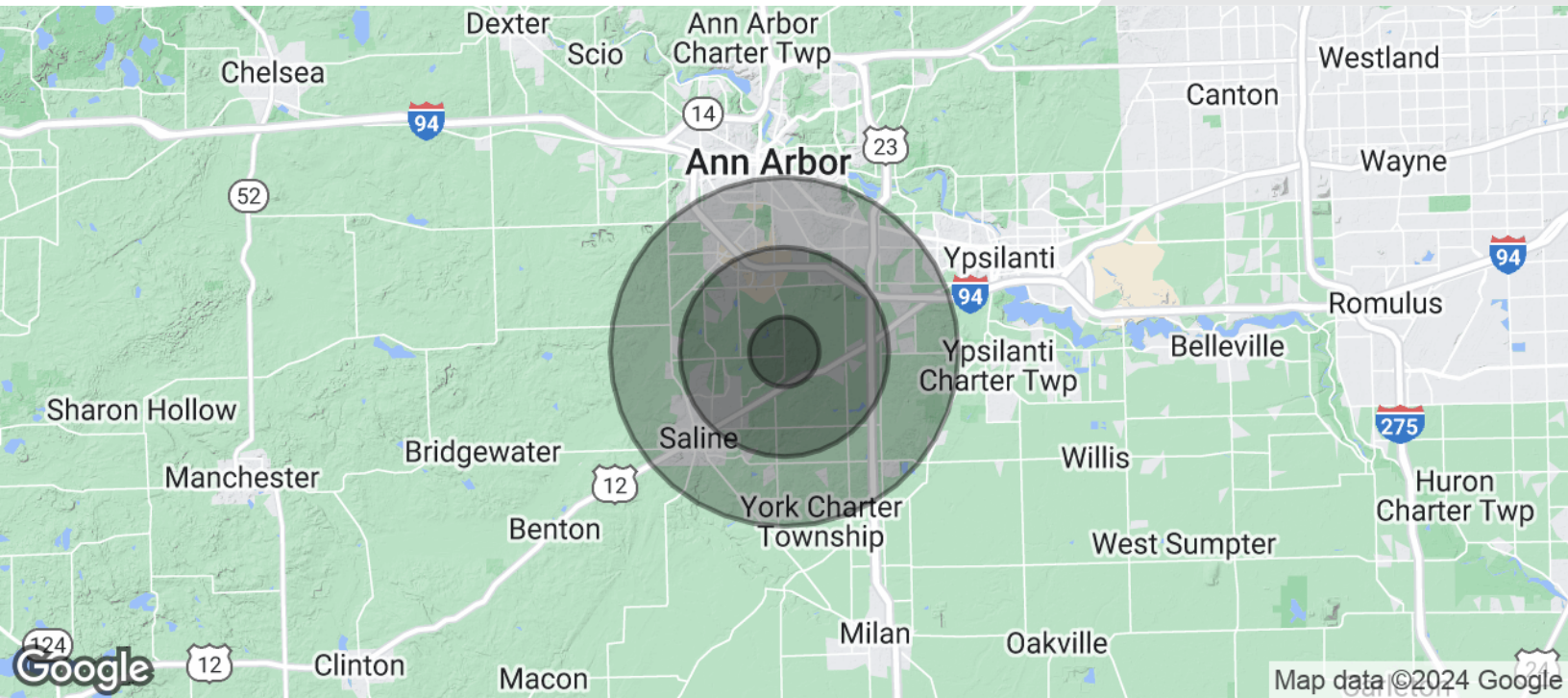
NO WARRANTY, EXPRESS OR IMPLIED, IS MADE AS TO THE ACCURACY OF THE INFORMATION CONTAINED HEREIN. THIS INFORMATION IS SUBMITTED SUBJECT TO ERRORS, OMISSIONS, CHANGE OF PRICE, RENTAL OR OTHER CONDITIONS, WITHDRAWAL WITHOUT NOTICE, AND IS SUBJECT TO ANY SPECIAL LISTING CONDITIONS IMPOSED BY OUR PRINCIPALS. COOPERATING BROKERS, BUYERS, TENANTS AND OTHER PARTIES WHO RECEIVE THIS DOCUMENT SHOULD NOT RELY ON IT, BUT SHOULD USE IT AS A STARTING POINT OF ANALYSIS, AND SHOULD INDEPENDENTLY CONFIRM THE ACCURACY OF THE INFORMATION CONTAINED HEREIN THROUGH A DUE DILIGENCE REVIEW OF THE BOOKS, RECORDS, FILES AND DOCUMENTS THAT CONSTITUTE RELIABLE SOURCES OF THE INFORMATION DESCRIBED HEREIN. LOGOS ARE FOR IDENTIFICATION PURPOSES ONLY AND MAY BE TRADEMARKS OF THEIR RESPECTIVE COMPANIES. NAI Farbman, INC. CA BRE LIC. #01990696.



1,200 - 12,600 SF  
RETAIL



FOR SALE/LEASE



POPULATION	1 MILE	3 MILES	5 MILES
Total Population	1,490	29,944	113,234
Average Age	38.5	40.0	38.0
Average Age (Male)	36.3	37.2	36.4
Average Age (Female)	42.4	42.1	38.9
HOUSEHOLDS & INCOME	1 MILE	3 MILES	5 MILES
Total Households	530	12,414	47,566
# of Persons per HH	2.8	2.4	2.4
Average HH Income	\$169,694	\$109,437	\$103,820
Average House Value	\$384,293	\$270,206	\$278,401

2020 American Community Survey (ACS)



Commercial Real Estate Services, Worldwide.

www.naifarbman.com

**Ron Goldstone**  
Executive Vice President | 248.351.4371  
goldstone@farbman.com

**Brandon Ben-Ezra**  
Leasing and Sales Associate | 947.517.6226  
ben-ezra@farbman.com

NO WARRANTY, EXPRESS OR IMPLIED, IS MADE AS TO THE ACCURACY OF THE INFORMATION CONTAINED HEREIN. THIS INFORMATION IS SUBMITTED SUBJECT TO ERRORS, OMISSIONS, CHANGE OF PRICE, RENTAL OR OTHER CONDITIONS, WITHDRAWAL WITHOUT NOTICE, AND IS SUBJECT TO ANY SPECIAL LISTING CONDITIONS IMPOSED BY OUR PRINCIPALS. COOPERATING BROKERS, BUYERS, TENANTS AND OTHER PARTIES WHO RECEIVE THIS DOCUMENT SHOULD NOT RELY ON IT, BUT SHOULD USE IT AS A STARTING POINT OF ANALYSIS, AND SHOULD INDEPENDENTLY CONFIRM THE ACCURACY OF THE INFORMATION CONTAINED HEREIN THROUGH A DUE DILIGENCE REVIEW OF THE BOOKS, RECORDS, FILES AND DOCUMENTS THAT CONSTITUTE RELIABLE SOURCES OF THE INFORMATION DESCRIBED HEREIN. LOGOS ARE FOR IDENTIFICATION PURPOSES ONLY AND MAY BE TRADEMARKS OF THEIR RESPECTIVE COMPANIES. NAI Farbman, INC. CA BRE LIC. #01990696.



1,200 - 12,600 SF  
RETAIL



FOR SALE/LEASE



**NAI Farbman**

Commercial Real Estate Services, Worldwide.

www.naifarbman.com

**Ron Goldstone**  
Executive Vice President | 248.351.4371  
goldstone@farbman.com

**Brandon Ben-Ezra**  
Leasing and Sales Associate | 947.517.6226  
ben-ezra@farbman.com

NO WARRANTY, EXPRESS OR IMPLIED, IS MADE AS TO THE ACCURACY OF THE INFORMATION CONTAINED HEREIN. THIS INFORMATION IS SUBMITTED SUBJECT TO ERRORS, OMISSIONS, CHANGE OF PRICE, RENTAL OR OTHER CONDITIONS, WITHDRAWAL WITHOUT NOTICE, AND IS SUBJECT TO ANY SPECIAL LISTING CONDITIONS IMPOSED BY OUR PRINCIPALS, COOPERATING BROKERS, BUYERS, TENANTS AND OTHER PARTIES WHO RECEIVE THIS DOCUMENT SHOULD NOT RELY ON IT, BUT SHOULD USE IT AS A STARTING POINT OF ANALYSIS, AND SHOULD INDEPENDENTLY CONFIRM THE ACCURACY OF THE INFORMATION CONTAINED HEREIN THROUGH A DUE DILIGENCE REVIEW OF THE BOOKS, RECORDS, FILES AND DOCUMENTS THAT CONSTITUTE RELIABLE SOURCES OF THE INFORMATION DESCRIBED HEREIN. LOGOS ARE FOR IDENTIFICATION PURPOSES ONLY AND MAY BE TRADEMARKS OF THEIR RESPECTIVE COMPANIES. NAI Farbman, INC. CA BRE LIC. #01990696.