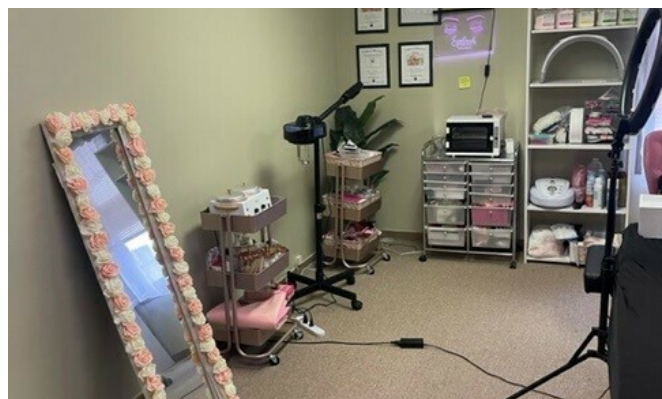


# TIMBER RIDGE PROFESSIONAL OFFICE CENTER SMALL SUITES STARTING AT \$650/MONTH



## FOR LEASE



## 33900 Eight Mile Rd

Farmington, Michigan 48335

### Property Highlights

- 10,466 SF Office Building
- Security System, 24-Hour Access, Shared Conference Room
- Quick Access to I-275
- B-1 Zoning
- 44 Surface Parking
- Amenities include Atrium, Courtyard, Natural Light

### OFFERING SUMMARY

Lease Rate:	Contact Agent(s)
Available SF:	379 - 929 SF
Building Size:	10,466 SF

### SPACES

SPACES	SPACE SIZE
Suite 141	510 SF
Suite 161	929 SF
Suite 171	758 SF
Suite A	379 SF
Suite B	382 SF



Commercial Real Estate Services, Worldwide.

[www.naifarbman.com](http://www.naifarbman.com)

#### Wendy Acho

Leasing and Sales Associate | 248.563.0739  
[acho@farbman.com](mailto:acho@farbman.com)

#### Gavin Mills

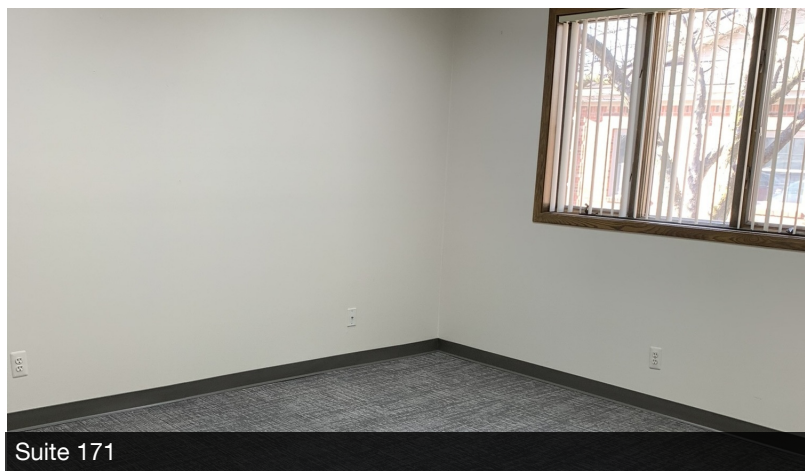
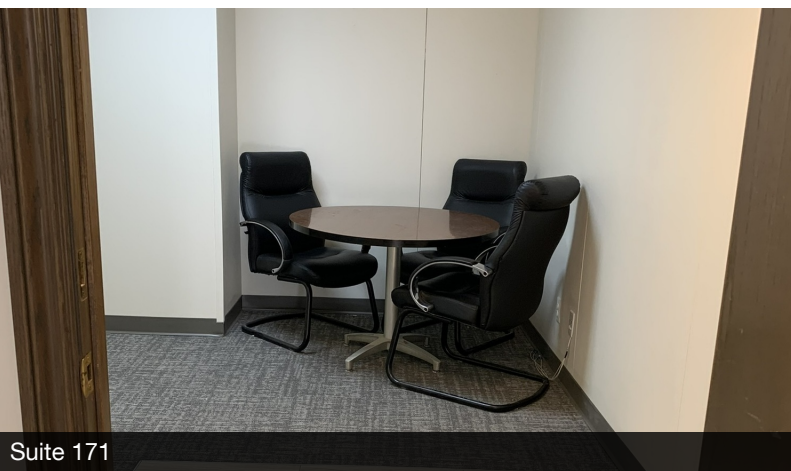
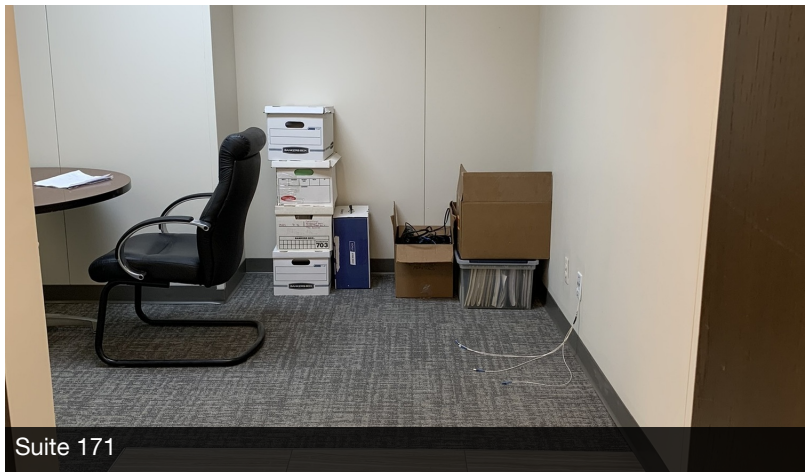
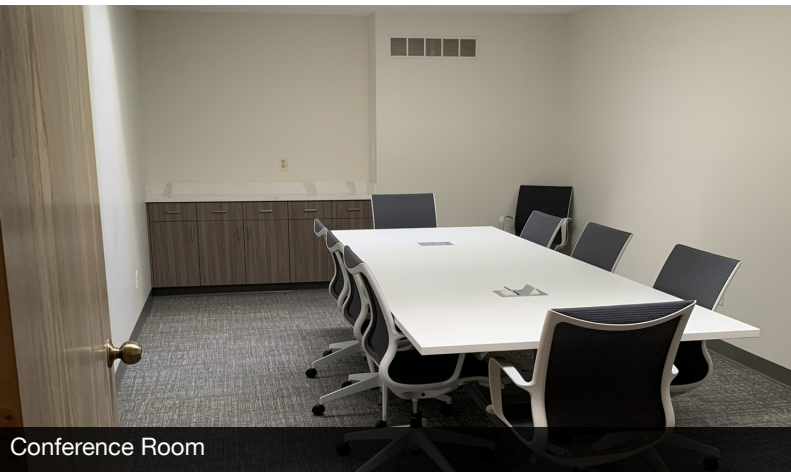
Leasing and Sales Associate | 908.304.4534  
[mills@farbman.com](mailto:mills@farbman.com)

NO WARRANTY, EXPRESS OR IMPLIED, IS MADE AS TO THE ACCURACY OF THE INFORMATION CONTAINED HEREIN. THIS INFORMATION IS SUBMITTED SUBJECT TO ERRORS, OMISSIONS, CHANGE OF PRICE, RENTAL OR OTHER CONDITIONS, WITHDRAWAL WITHOUT NOTICE, AND IS SUBJECT TO ANY SPECIAL LISTING CONDITIONS IMPOSED BY OUR PRINCIPALS, COOPERATING BROKERS, BUYERS, TENANTS AND OTHER PARTIES WHO RECEIVE THIS DOCUMENT SHOULD NOT RELY ON IT, BUT SHOULD USE IT AS A STARTING POINT OF ANALYSIS, AND SHOULD INDEPENDENTLY CONFIRM THE ACCURACY OF THE INFORMATION CONTAINED HEREIN THROUGH A DUE DILIGENCE REVIEW OF THE BOOKS, RECORDS, FILES AND DOCUMENTS THAT CONSTITUTE RELIABLE SOURCES OF THE INFORMATION DESCRIBED HEREIN. LOGOS ARE FOR IDENTIFICATION PURPOSES ONLY AND MAY BE TRADEMARKS OF THEIR RESPECTIVE COMPANIES. NAI Farbman, INC. CA BRE LIC. #01990696.

# TIMBER RIDGE PROFESSIONAL OFFICE CENTER SMALL SUITES STARTING AT \$650/MONTH



## FOR LEASE





# TIMBER RIDGE PROFESSIONAL OFFICE CENTER SMALL SUITES STARTING AT \$650/MONTH



## FOR LEASE

