

3310 W BIG BEAVER SHEFFIELD OFFICE PARK



FOR LEASE

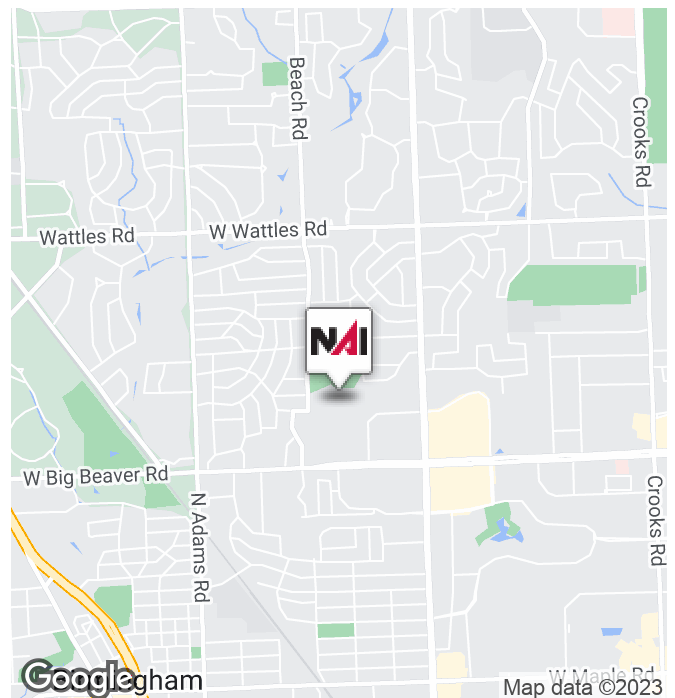


Class A Office

Troy, Michigan 48084

Property Highlights

- Class A Office Complex
- New Lobby and Common Areas
- Located on Big Beaver in the Heart of Troy
- Manhattan Deli/Starbucks
- Building Conference Center
- Fitness Center
- Bike Rental
- Outdoor Green Space
- On-Site Management
- After-Hours Security
- 24/7 Access
- Abundant Parking
- Easy Access to I-75, Woodward Ave and Telegraph Road
- Seconds from Somerset Mall and Downtown Birmingham



NAI Farbman

Commercial Real Estate Services, Worldwide.

www.naifarbman.com

Lesley Gutman

Senior Vice President | 248.860.6800

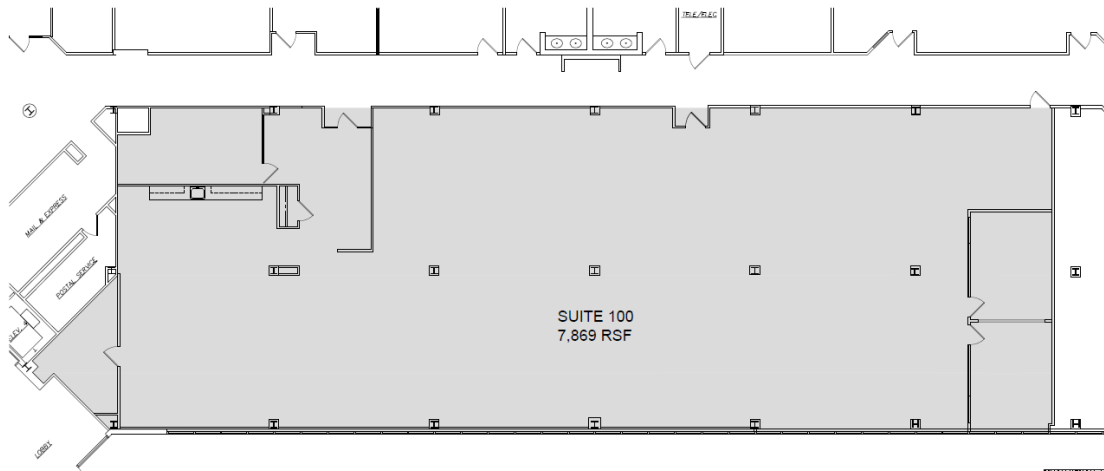
lgutman@farbman.com

NO WARRANTY, EXPRESS OR IMPLIED, IS MADE AS TO THE ACCURACY OF THE INFORMATION CONTAINED HEREIN. THIS INFORMATION IS SUBMITTED SUBJECT TO ERRORS, OMISSIONS, CHANGE OF PRICE, RENTAL OR OTHER CONDITIONS, WITHDRAWAL WITHOUT NOTICE, AND IS SUBJECT TO ANY SPECIAL LISTING CONDITIONS IMPOSED BY OUR PRINCIPALS. COOPERATING BROKERS, BUYERS, TENANTS AND OTHER PARTIES WHO RECEIVE THIS DOCUMENT SHOULD NOT RELY ON IT, BUT SHOULD USE IT AS A STARTING POINT OF ANALYSIS, AND SHOULD INDEPENDENTLY CONFIRM THE ACCURACY OF THE INFORMATION CONTAINED HEREIN THROUGH A DUE DILIGENCE REVIEW OF THE BOOKS, RECORDS, FILES AND DOCUMENTS THAT CONSTITUTE RELIABLE SOURCES OF THE INFORMATION DESCRIBED HEREIN. LOGOS ARE FOR IDENTIFICATION PURPOSES ONLY AND MAY BE TRADEMARKS OF THEIR RESPECTIVE COMPANIES. NAI Farbman, INC. CA BRE LIC. #01990696.

3310 W BIG BEAVER SHEFFIELD OFFICE PARK



FOR LEASE



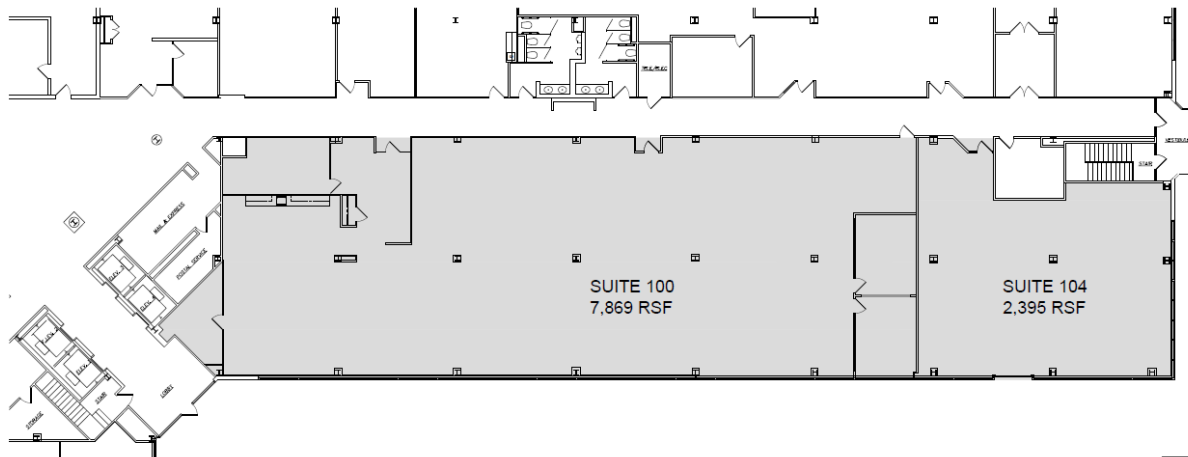
SHEFFIELD OFFICE PARK
3310 W. BIG BEAVER RD., SUITE 100
2-21-23 SCALE: 3/32"=1'-0"

PREPARED BY METRO CAD GROUP



FOR LEASING
INFORMATION CALL
LESLEY GUTMAN
(248) 353-0500

NAI Farbman
COMMERCIAL REAL ESTATE SERVICES, WORLDWIDE



SHEFFIELD OFFICE PARK
3310 W. BIG BEAVER RD., SUITE 100 & 104
2-21-23 SCALE: 3/32"=1'-0"

PREPARED BY METRO CAD GROUP



FOR LEASING
INFORMATION CALL
LESLEY GUTMAN
(248) 353-0500

NAI Farbman
COMMERCIAL REAL ESTATE SERVICES, WORLDWIDE

NAI Farbman

Commercial Real Estate Services, Worldwide.

www.naifarbman.com

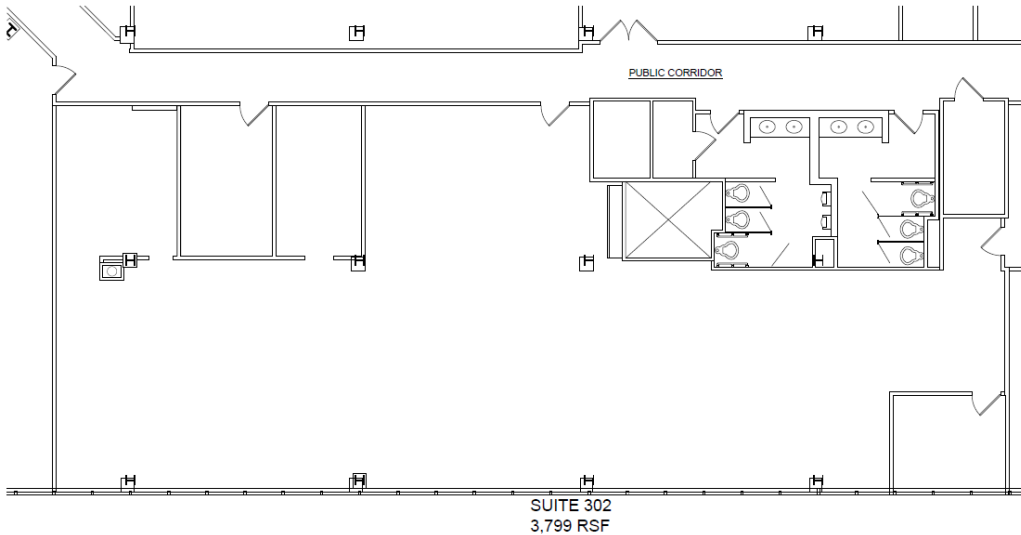
Lesley Gutman
Senior Vice President | 248.860.6800
lgutman@farbman.com

NO WARRANTY, EXPRESS OR IMPLIED, IS MADE AS TO THE ACCURACY OF THE INFORMATION CONTAINED HEREIN. THIS INFORMATION IS SUBMITTED SUBJECT TO ERRORS, OMISSIONS, CHANGE OF PRICE, RENTAL OR OTHER CONDITIONS, WITHDRAWAL WITHOUT NOTICE, AND IS SUBJECT TO ANY SPECIAL LISTING CONDITIONS IMPOSED BY OUR PRINCIPALS. COOPERATING BROKERS, BUYERS, TENANTS AND OTHER PARTIES WHO RECEIVE THIS DOCUMENT SHOULD NOT RELY ON IT, BUT SHOULD USE IT AS A STARTING POINT OF ANALYSIS, AND SHOULD INDEPENDENTLY CONFIRM THE ACCURACY OF THE INFORMATION CONTAINED HEREIN THROUGH A DUE DILIGENCE REVIEW OF THE BOOKS, RECORDS, FILES AND DOCUMENTS THAT CONSTITUTE RELIABLE SOURCES OF THE INFORMATION DESCRIBED HEREIN. LOGOS ARE FOR IDENTIFICATION PURPOSES ONLY AND MAY BE TRADEMARKS OF THEIR RESPECTIVE COMPANIES. NAI Farbman, INC. CA BRE LIC. #01990696.

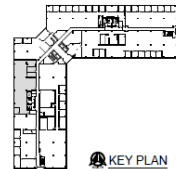
3310 W BIG BEAVER SHEFFIELD OFFICE PARK



FOR LEASE



SHEFFIELD OFFICE PARK
3310 W. BIG BEAVER RD., SUITE 302
03-29-23 SCALE: 1/8"=1'-0"

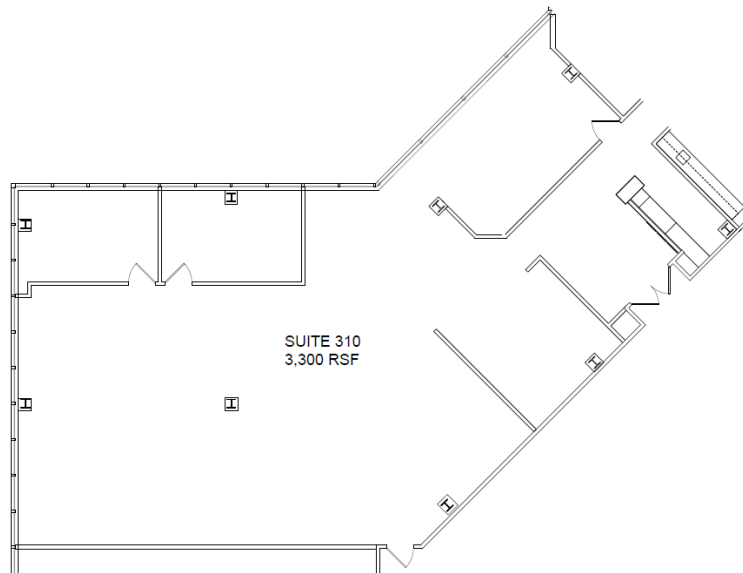


KEY PLAN

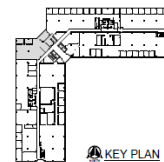
FOR LEASING
INFORMATION CALL
LESLIE GUTMAN
(248) 353-0500



PREPARED BY METRO CAD GROUP



SHEFFIELD OFFICE PARK
3310 W. BIG BEAVER RD., SUITE 310
03-29-23 SCALE: 1/8"=1'-0"



KEY PLAN

FOR LEASING
INFORMATION CALL
LESLIE GUTMAN
(248) 353-0500



PREPARED BY METRO CAD GROUP



Commercial Real Estate Services, Worldwide.
www.naifarberman.com

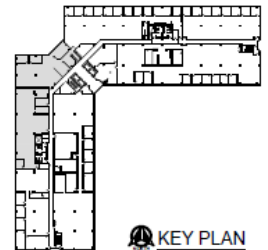
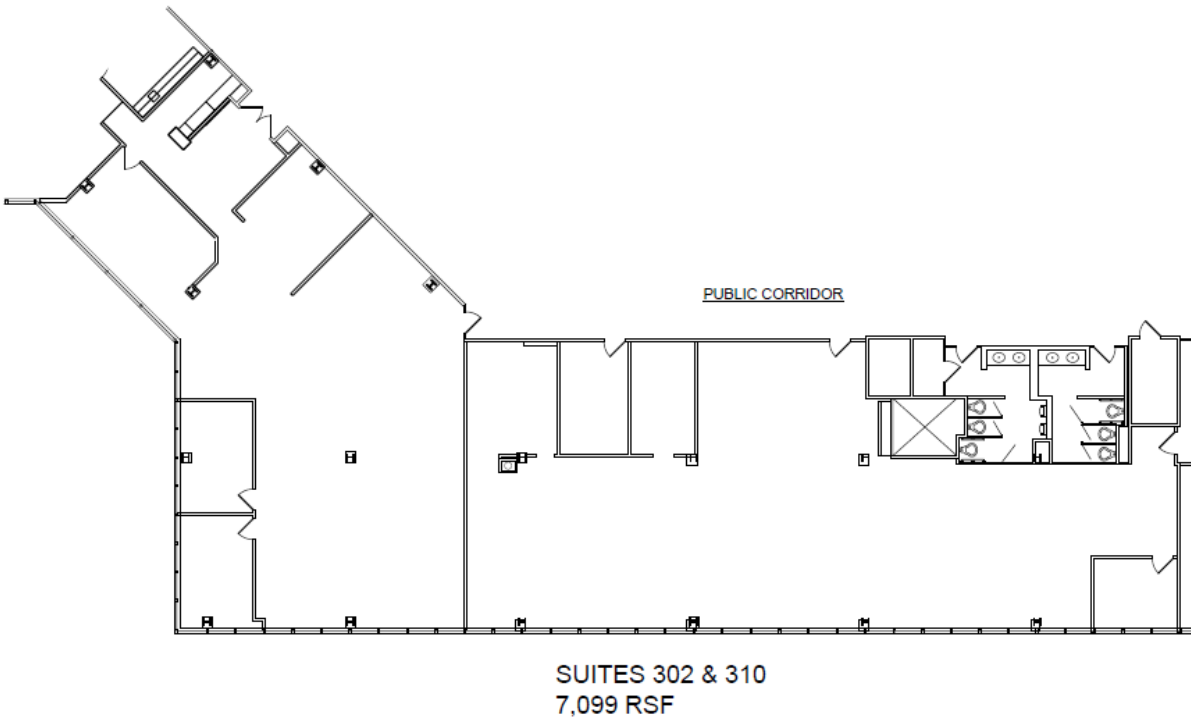
Lesley Gutman
Senior Vice President | 248.860.6800
lgutman@farberman.com

NO WARRANTY, EXPRESS OR IMPLIED, IS MADE AS TO THE ACCURACY OF THE INFORMATION CONTAINED HEREIN. THIS INFORMATION IS SUBMITTED SUBJECT TO ERRORS, OMISSIONS, CHANGE OF PRICE, RENTAL OR OTHER CONDITIONS, WITHDRAWAL WITHOUT NOTICE, AND IS SUBJECT TO ANY SPECIAL LISTING CONDITIONS IMPOSED BY OUR PRINCIPALS. COOPERATING BROKERS, BUYERS, TENANTS AND OTHER PARTIES WHO RECEIVE THIS DOCUMENT SHOULD NOT RELY ON IT, BUT SHOULD USE IT AS A STARTING POINT OF ANALYSIS, AND SHOULD INDEPENDENTLY CONFIRM THE ACCURACY OF THE INFORMATION CONTAINED HEREIN THROUGH A DUE DILIGENCE REVIEW OF THE BOOKS, RECORDS, FILES AND DOCUMENTS THAT CONSTITUTE RELIABLE SOURCES OF THE INFORMATION DESCRIBED HEREIN. LOGOS ARE FOR IDENTIFICATION PURPOSES ONLY AND MAY BE TRADEMARKS OF THEIR RESPECTIVE COMPANIES. NAI Farberman, INC. CA BRE LIC. #01990696.

3310 W BIG BEAVER SHEFFIELD OFFICE PARK



FOR LEASE



SHEFFIELD OFFICE PARK
3310 W. BIG BEAVER RD., SUITES 302 & 310

NORTH

03-29-23

SCALE: 1/16"=1'-0"

FOR LEASING
INFORMATION CALL
LESLEY GUTMAN
(248) 353-0500



Commercial Real Estate Services, Worldwide.

www.naifarberman.com

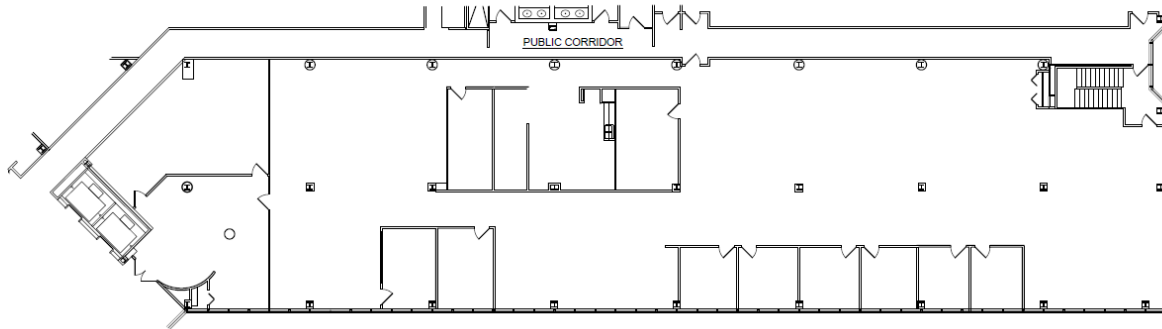
Lesley Gutman
Senior Vice President | 248.860.6800
lgutman@farberman.com

NO WARRANTY, EXPRESS OR IMPLIED, IS MADE AS TO THE ACCURACY OF THE INFORMATION CONTAINED HEREIN. THIS INFORMATION IS SUBMITTED SUBJECT TO ERRORS, OMISSIONS, CHANGE OF PRICE, RENTAL OR OTHER CONDITIONS, WITHDRAWAL WITHOUT NOTICE, AND IS SUBJECT TO ANY SPECIAL LISTING CONDITIONS IMPOSED BY OUR PRINCIPALS. COOPERATING BROKERS, BUYERS, TENANTS AND OTHER PARTIES WHO RECEIVE THIS DOCUMENT SHOULD NOT RELY ON IT, BUT SHOULD USE IT AS A STARTING POINT OF ANALYSIS, AND SHOULD INDEPENDENTLY CONFIRM THE ACCURACY OF THE INFORMATION CONTAINED HEREIN THROUGH A DUE DILIGENCE REVIEW OF THE BOOKS, RECORDS, FILES AND DOCUMENTS THAT CONSTITUTE RELIABLE SOURCES OF THE INFORMATION DESCRIBED HEREIN. LOGOS ARE FOR IDENTIFICATION PURPOSES ONLY AND MAY BE TRADEMARKS OF THEIR RESPECTIVE COMPANIES. NAI Farberman, INC. CA BRE LIC. #01990696.

3310 W BIG BEAVER SHEFFIELD OFFICE PARK



FOR LEASE

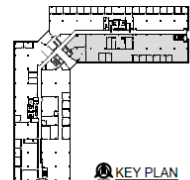


SUITE 300
11,038 RSF



SHEFFIELD OFFICE PARK
3310 W. BIG BEAVER RD., SUITE 300
12-2-22 SCALE: 1/16"=1'-0"

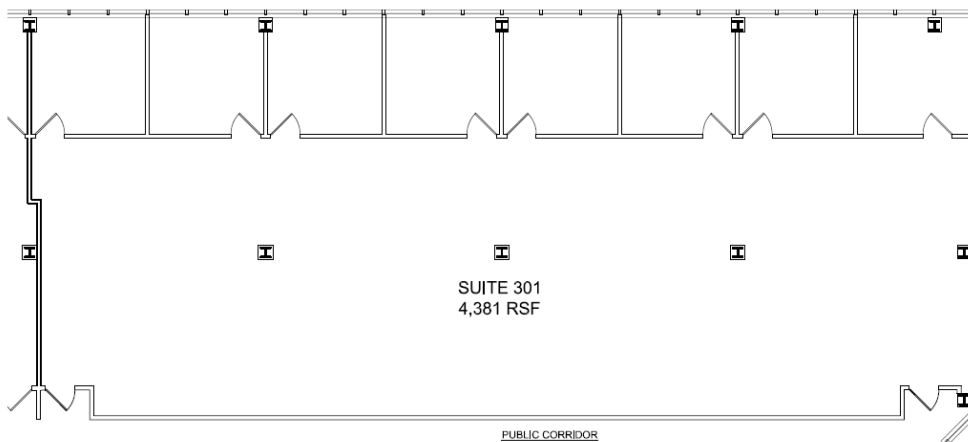
PREPARED BY METRO CAD GROUP



KEY PLAN

FOR LEASING
INFORMATION CALL
LESLEY GUTMAN
(248) 353-0500

NAI Farbman
COMMERCIAL REAL ESTATE SERVICES, WORLDWIDE



SUITE 301
4,381 RSF



SHEFFIELD OFFICE PARK
3310 W. BIG BEAVER RD., SUITE 301
3-29-23 SCALE: 1/8"=1'-0"

PREPARED BY METRO CAD GROUP



KEY PLAN

FOR LEASING
INFORMATION CALL
LESLEY GUTMAN
(248) 353-0500

NAI Farbman
COMMERCIAL REAL ESTATE SERVICES, WORLDWIDE

NAI Farbman

Commercial Real Estate Services, Worldwide.

www.naifarbman.com

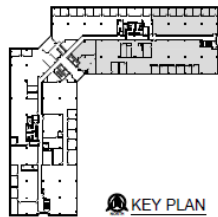
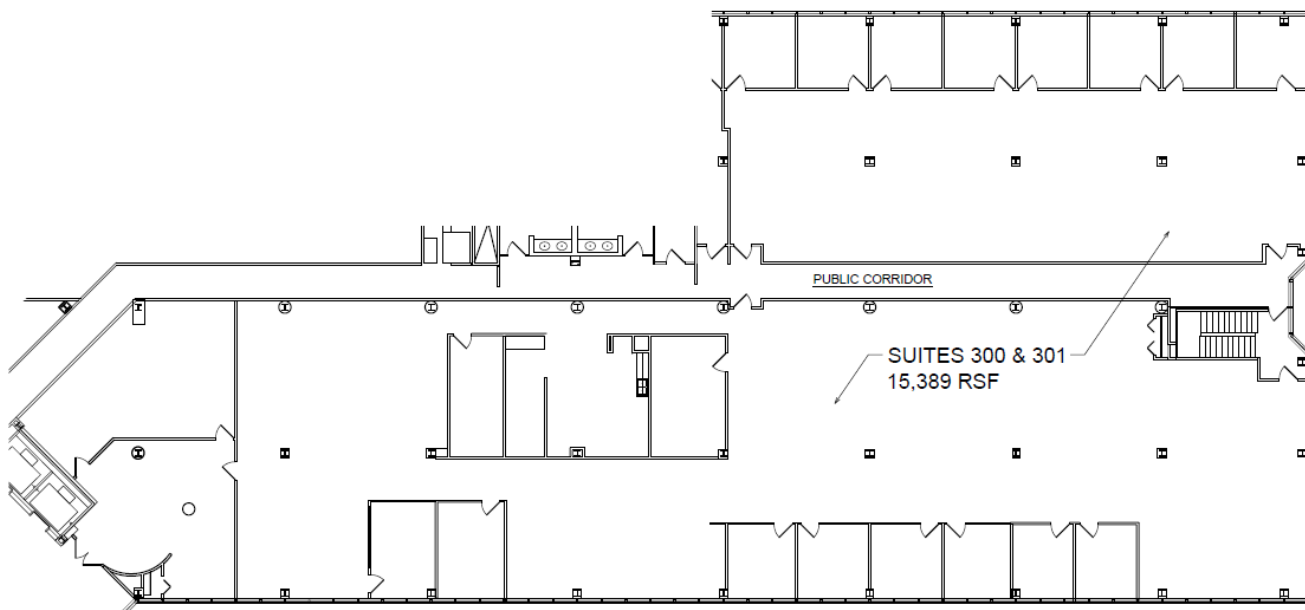
Lesley Gutman
Senior Vice President | 248.860.6800
lgutman@farbman.com

NO WARRANTY, EXPRESS OR IMPLIED, IS MADE AS TO THE ACCURACY OF THE INFORMATION CONTAINED HEREIN. THIS INFORMATION IS SUBMITTED SUBJECT TO ERRORS, OMISSIONS, CHANGE OF PRICE, RENTAL OR OTHER CONDITIONS, WITHDRAWAL WITHOUT NOTICE, AND IS SUBJECT TO ANY SPECIAL LISTING CONDITIONS IMPOSED BY OUR PRINCIPALS. COOPERATING BROKERS, BUYERS, TENANTS AND OTHER PARTIES WHO RECEIVE THIS DOCUMENT SHOULD NOT RELY ON IT, BUT SHOULD USE IT AS A STARTING POINT OF ANALYSIS, AND SHOULD INDEPENDENTLY CONFIRM THE ACCURACY OF THE INFORMATION CONTAINED HEREIN THROUGH A DUE DILIGENCE REVIEW OF THE BOOKS, RECORDS, FILES AND DOCUMENTS THAT CONSTITUTE RELIABLE SOURCES OF THE INFORMATION DESCRIBED HEREIN. LOGOS ARE FOR IDENTIFICATION PURPOSES ONLY AND MAY BE TRADEMARKS OF THEIR RESPECTIVE COMPANIES. NAI Farbman, INC. CA BRE LIC. #01990696.

3310 W BIG BEAVER SHEFFIELD OFFICE PARK



FOR LEASE



SHEFFIELD OFFICE PARK
3310 W. BIG BEAVER RD., SUITES 300 & 301
3-29-23 SCALE: 1/16"=1'-0"

FOR LEASING
INFORMATION CALL
LESLEY GUTMAN
(248) 353-0500

NAI Farbman
COMMERCIAL REAL ESTATE SERVICES, WORLDWIDE

PREPARED BY METRO CAD GROUP

NAI Farbman

Commercial Real Estate Services, Worldwide.

www.naifarbman.com

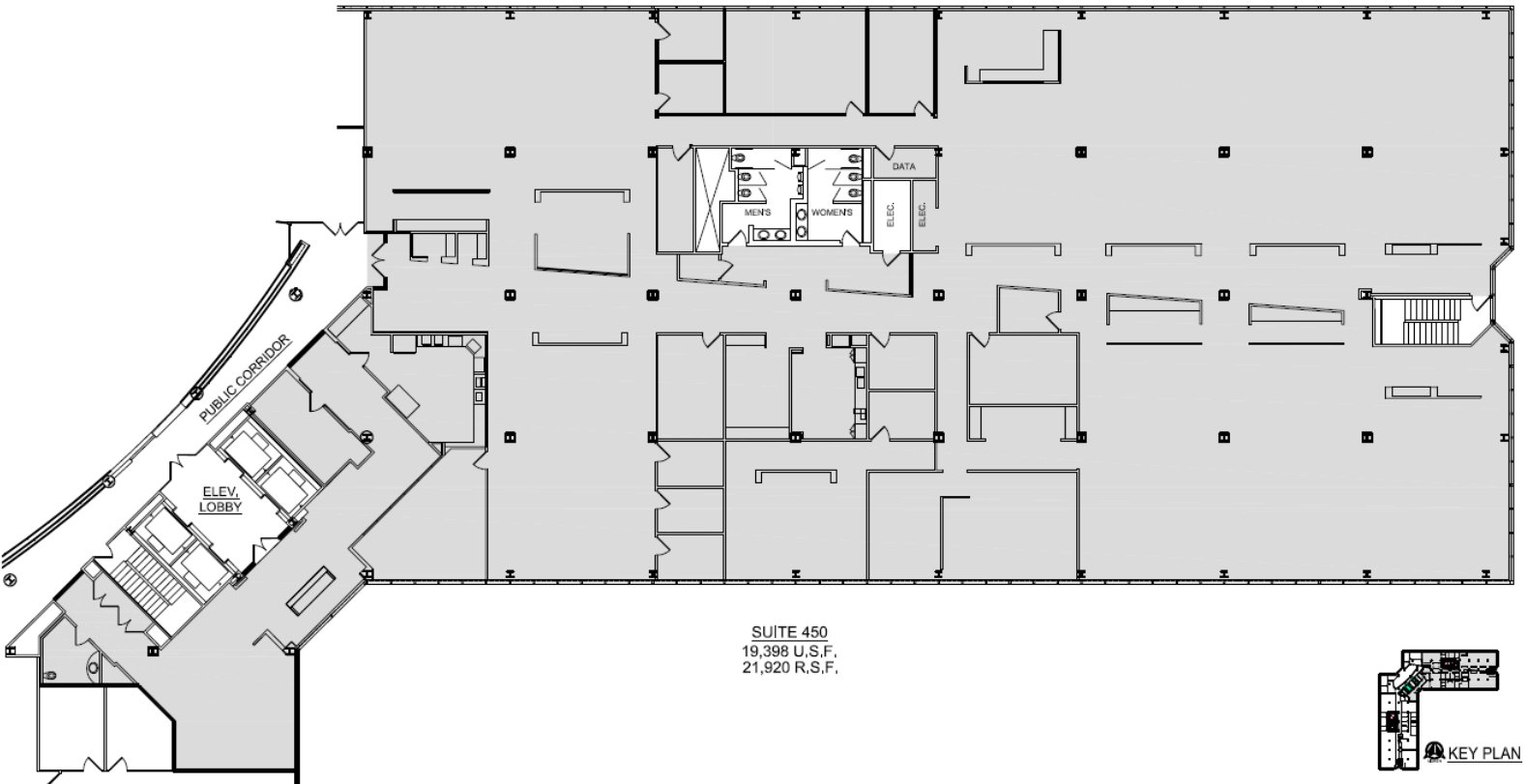
Lesley Gutman
Senior Vice President | 248.860.6800
lgutman@farbman.com

NO WARRANTY, EXPRESS OR IMPLIED, IS MADE AS TO THE ACCURACY OF THE INFORMATION CONTAINED HEREIN. THIS INFORMATION IS SUBMITTED SUBJECT TO ERRORS, OMISSIONS, CHANGE OF PRICE, RENTAL OR OTHER CONDITIONS, WITHDRAWAL WITHOUT NOTICE, AND IS SUBJECT TO ANY SPECIAL LISTING CONDITIONS IMPOSED BY OUR PRINCIPALS. COOPERATING BROKERS, BUYERS, TENANTS AND OTHER PARTIES WHO RECEIVE THIS DOCUMENT SHOULD NOT RELY ON IT, BUT SHOULD USE IT AS A STARTING POINT OF ANALYSIS, AND SHOULD INDEPENDENTLY CONFIRM THE ACCURACY OF THE INFORMATION CONTAINED HEREIN THROUGH A DUE DILIGENCE REVIEW OF THE BOOKS, RECORDS, FILES AND DOCUMENTS THAT CONSTITUTE RELIABLE SOURCES OF THE INFORMATION DESCRIBED HEREIN. LOGOS ARE FOR IDENTIFICATION PURPOSES ONLY AND MAY BE TRADEMARKS OF THEIR RESPECTIVE COMPANIES. NAI Farbman, INC. CA BRE LIC. #01990696.

3310 W BIG BEAVER SHEFFIELD OFFICE PARK



FOR LEASE



SUITE 450
19,398 U.S.F.
21,920 R.S.F.



FOR LEASING
INFORMATION CALL
LESLEY GUTMAN
(248) 353-0500

PREPARED BY METRO CAD GROUP



SHEFFIELD OFFICE PARK
3310 W. BIG BEAVER RD. - SUITE 450
6-2-21 SCALE 1/16" = 1'-0"

NAI Farberman
COMMERCIAL REAL ESTATE SERVICES, WORLDWIDE

NAI Farberman

Commercial Real Estate Services, Worldwide.

www.naifarberman.com

Lesley Gutman
Senior Vice President | 248.860.6800
lgutman@farberman.com

NO WARRANTY, EXPRESS OR IMPLIED, IS MADE AS TO THE ACCURACY OF THE INFORMATION CONTAINED HEREIN. THIS INFORMATION IS SUBMITTED SUBJECT TO ERRORS, OMISSIONS, CHANGE OF PRICE, RENTAL OR OTHER CONDITIONS, WITHDRAWAL WITHOUT NOTICE, AND IS SUBJECT TO ANY SPECIAL LISTING CONDITIONS IMPOSED BY OUR PRINCIPALS. COOPERATING BROKERS, BUYERS, TENANTS AND OTHER PARTIES WHO RECEIVE THIS DOCUMENT SHOULD NOT RELY ON IT, BUT SHOULD USE IT AS A STARTING POINT OF ANALYSIS, AND SHOULD INDEPENDENTLY CONFIRM THE ACCURACY OF THE INFORMATION CONTAINED HEREIN THROUGH A DUE DILIGENCE REVIEW OF THE BOOKS, RECORDS, FILES AND DOCUMENTS THAT CONSTITUTE RELIABLE SOURCES OF THE INFORMATION DESCRIBED HEREIN. LOGOS ARE FOR IDENTIFICATION PURPOSES ONLY AND MAY BE TRADEMARKS OF THEIR RESPECTIVE COMPANIES. NAI Farberman, INC. CA BRE LIC. #01990696.