

FOR LEASE MEDICAL

2921 & 2925 & 2931 PALO VERDE AVENUE | LONG BEACH, CALIFORNIA

PROPERTY HIGHLIGHTS

- Well Maintained Medical Building
- Long Beach Airport Location
- Professionally Managed
- Easy Access to 405 & 605 Freeways
- Tenant Improvements Available
- Free Surface Parking
- Ground Floor Units Available
- Signage Available

PROPERTY OVERVIEW

High visibility Medical office building in Prime Long Beach location.

EXCLUSIVELY LISTED BY:

John Bosko

Executive Vice President
949.468.2323 Direct
johnbosko@naicapital.com
CA DRE #00969975

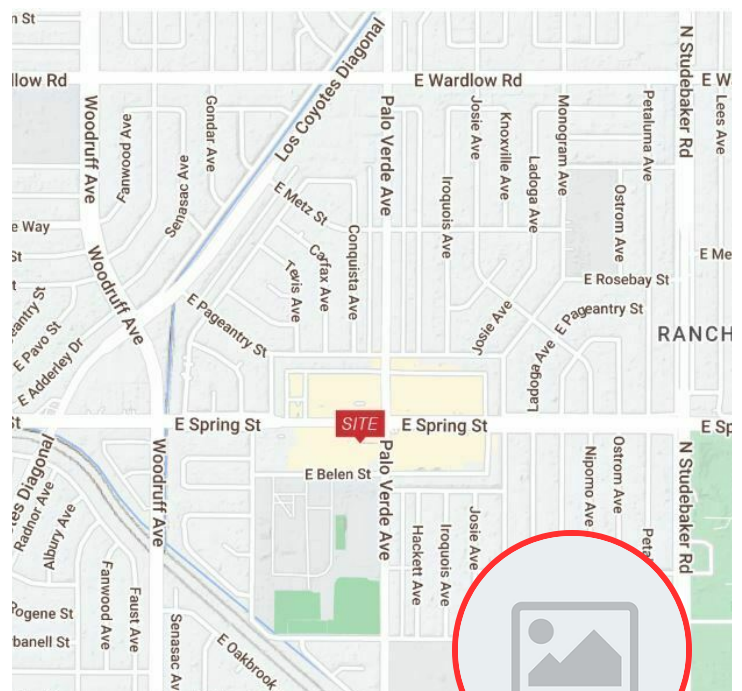
NAICapital
COMMERCIAL REAL ESTATE SERVICES, WORLDWIDE

SPACES

LEASE RATE

SPACE SIZE

Suite 100 - 2921 Palo Verde Avenue	\$2.75 SF/month	8,893 SF
Suite 104 - 2931 Palo Verde Avenue	\$2.75 SF/month	3,292 SF



www.naicapital.com

PROPERTY PHOTOS



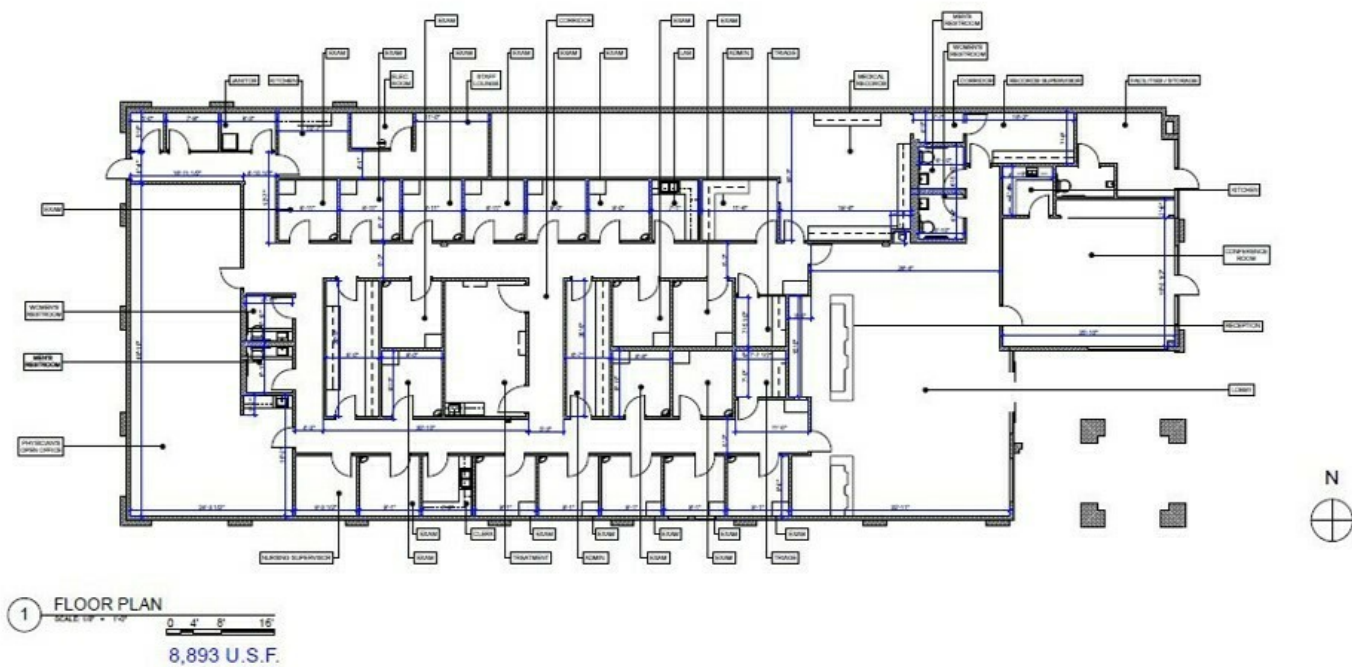
John Bosko

Executive Vice President
949.468.2323 Direct
johnbosko@naicapital.com

CA DRE #00969975

No warranty, express or implied, is made as to the accuracy of the information contained herein. This information is submitted subject to errors, omissions, change of price, rental or other conditions withdrawal without notice, and is subject to any special listing conditions imposed by our principals. Cooperating brokers, buyers, tenants and other parties who receive this document should not rely on it, but should use it as a starting point of analysis, and should independently confirm the accuracy of the information contained herein through a due diligence review of the books, records, files and documents that constitute reliable sources of the information described herein. Logos are for identification purposes only and may be trademarks of their respective companies. NAI Capital Commercial, Inc. CAL DRE Lic. #02130474

2921 FLOOR PLAN



John Bosko

Executive Vice President
949.468.2323 Direct
johnbosko@naicapital.com

CA DRE #00969975

No warranty, express or implied, is made as to the accuracy of the information contained herein. This information is submitted subject to errors, omissions, change of price, rental or other conditions, withdrawal without notice, and is subject to any special listing conditions imposed by our principals. Cooperating brokers, buyers, tenants and other parties who receive this document should not rely on it, but should use it as a starting point of analysis, and should independently confirm the accuracy of the information contained herein through a due diligence review of the books, records, files and documents that constitute reliable sources of the information described herein. Logos are for identification purposes only and may be trademarks of their respective companies. NAI Capital Commercial, Inc. CAL DRE Lic. #02130474

2931 FLOOR PLAN



LASERTECH® is a registered US trademark of Lasertech® Floorplans Ltd.
Copyright 1998 Lasertech® Floorplans Ltd., All Rights Reserved

John Bosko

Executive Vice President
949.468.2323 Direct
johnbosko@naicapital.com

CA DRE #00969975

No warranty, express or implied, is made as to the accuracy of the information contained herein. This information is submitted subject to errors, omissions, change of price, rental or other conditions withdrawal without notice, and is subject to any special listing conditions imposed by our principals. Cooperating brokers, buyers, tenants and other parties who receive this document should not rely on it, but should use it as a starting point of analysis, and should independently confirm the accuracy of the information contained herein through a due diligence review of the books, records, files and documents that constitute reliable sources of the information described herein. Logos are for identification purposes only and may be trademarks of their respective companies. NAI Capital Commercial, Inc. CAL DRE Lic. #02130474

NAI Capital | 1920 Main Street #100 | Irvine, CA 92614