

# BIRCH RUN TOWNSHIP - ADULT-USE PROVISIONING CENTER

12454 DIXIE HIGHWAY | BIRCH RUN, MI 48415



[CLICK HERE FOR FINANCING](#)

## FOR SALE

**C3 CRE, LLC** | 36800 Woodward Avenue | Suite 301 | Bloomfield Hills, MI 48304 | 248.220.1110 | [c3cre.com](http://c3cre.com)

**C3CRE**  
CONNECT • COLLABORATE • CARE



# BIRCH RUN TOWNSHIP - ADULT-USE PROVISIONING CENTER

12454 DIXIE HIGHWAY | BIRCH RUN, MI 48415

## PROPERTY HIGHLIGHTS

- Municipal Approved Adult-Use Provisioning Center available for sale – license and real estate included in the sale.
- Freestanding building with 39 parking spots available.
- Prime location on Dixie Highway offering maximum exposure.
- Sits on a heavily traveled road with a daily traffic count of 65,000+ vehicles per day, offering excellent brand exposure and plenty of daytime traffic.
- Located just outside of Birch Run Premium Outlets, one of the top tourist attractions in Michigan.
- Conveniently located off the 2nd busiest I-75 Freeway Exit between Michigan and Florida.
- Surrounded by major national tenants, ensuring constant foot traffic and business opportunities within a mile of the site.
- Prime location on Dixie Highway offering maximum exposure, and 1 of 4 approved locations in the municipality.

DEMOGRAPHICS	1 MILE	5 MILES	10 MILES
Total Households	267	6,957	29,631
Total Population	579	15,772	65,453
Average HH Income	\$64,352	\$72,627	\$66,098

## BUILDING SIZE

6,000 SF

## LAND SIZE

1.4 Acres

## ASKING PRICE

\$1,495,000 (Seller Financing Available)

## AREA TENANTS





# BIRCH RUN TOWNSHIP - ADULT-USE PROVISIONING CENTER

12454 DIXIE HIGHWAY | BIRCH RUN, MI 48415





# BIRCH RUN TOWNSHIP - ADULT-USE PROVISIONING CENTER

12454 DIXIE HIGHWAY | BIRCH RUN, MI 48415

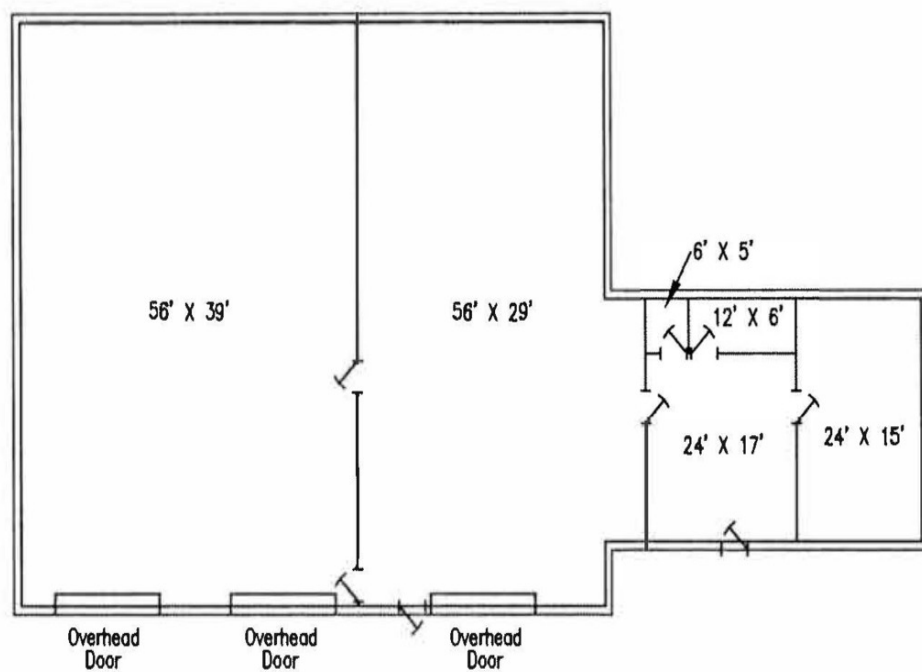




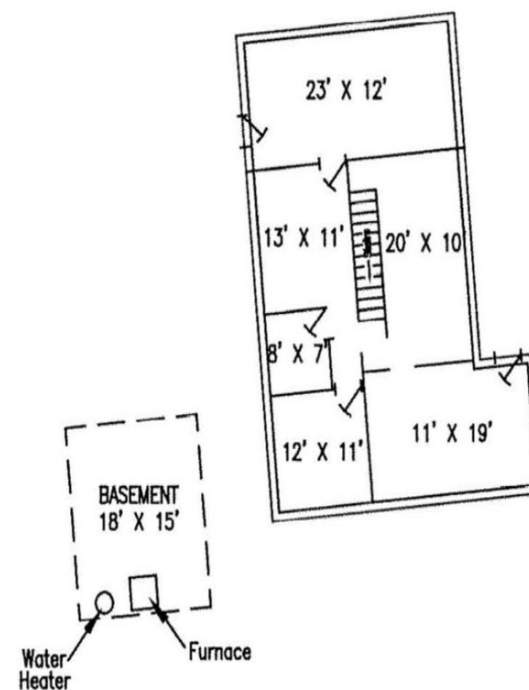
# BIRCH RUN TOWNSHIP - ADULT-USE PROVISIONING CENTER

12454 DIXIE HIGHWAY | BIRCH RUN, MI 48415

3,808 SQ. FT.



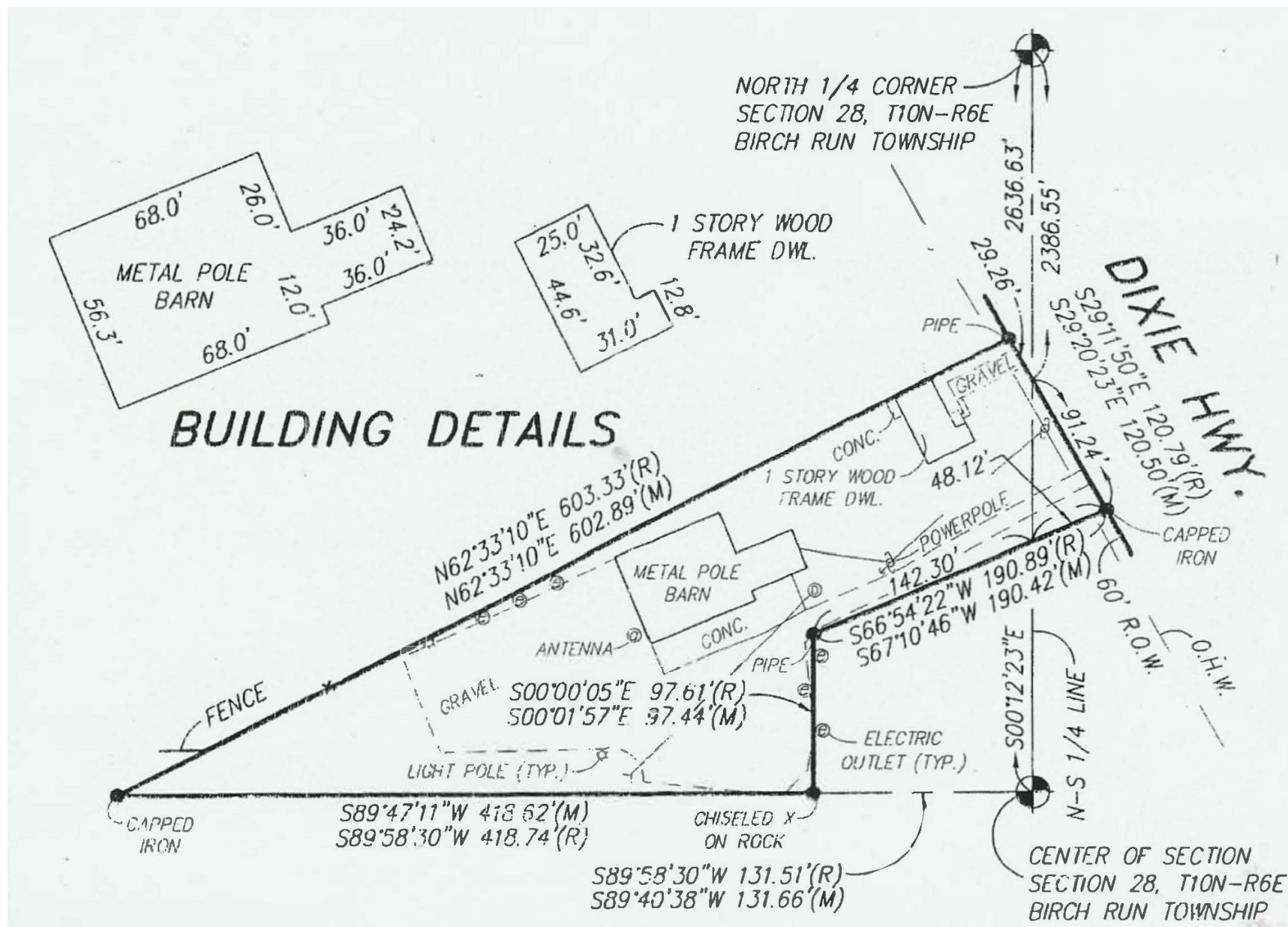
864 SQ. FT.





# BIRCH RUN TOWNSHIP - ADULT-USE PROVISIONING CENTER

12454 DIXIE HIGHWAY | BIRCH RUN, MI 48415





# BIRCH RUN TOWNSHIP - ADULT-USE PROVISIONING CENTER

12454 DIXIE HIGHWAY | BIRCH RUN, MI 48415





# BIRCH RUN TOWNSHIP - ADULT-USE PROVISIONING CENTER

12454 DIXIE HIGHWAY | BIRCH RUN, MI 48415





## CORBIN YALDOO

Founder/President  
248.220.1110 x01  
corbin@c3cre.com



## SAMUEL SHAMMO

Sales Associate  
248.220.1110 x03  
samuel@c3cre.com

---

### SERVICES

Buyer and Seller Representation  
Land Brokerage

Cannabis Acquisitions and Dispositions  
Portfolio and Surplus Property Sales

Investment Sales  
Site Selection and Location Strategy



# BIRCH RUN TOWNSHIP - ADULT-USE PROVISIONING CENTER

12454 DIXIE HIGHWAY | BIRCH RUN, MI 48415

## General:

C3 CRE, LLC is a licensed real estate brokerage, and our employees and contractors are not a substitute for qualified legal, tax or accounting advice. We do not provide such advice. We recommend obtaining the advice of qualified legal counsel and other professionals. Any assistance we may provide in reviewing legal documents is for guidance as a courtesy only. Our agents have no authority to contractually bind any client.

All property information is subject to the possibility of errors, omissions, change of price or other terms or conditions, prior sale, lease or financing, and withdrawal without notice. Delays, omissions and inaccuracies may arise due to a number of factors, including changes in laws.

We obtain information from sources we believe are reliable, but we provide no guaranty or warranty concerning its accuracy. Any projections, estimates, future plans, and forward-looking statements are based on assumptions, subject to uncertainty, and may vary from actual results. All information should be independently verified.

## Affiliations:

We may have relationships with companies we recommend or with whom we conduct business, including lenders, real estate brokers, loan brokers, insurance agents and others. We never require use of any company as a condition of our services. You should review each provider's fees, rates, terms of service and other relevant information.

## Cannabis Industry Regulation:

Our services to those in the cannabis industry are limited by state laws relating to medical and adult use cannabis operations. All cannabis-related business is currently illegal under U.S. federal law. Nothing contained on our website or other marketing materials nor any of our services is intended to assist in any violation of law. Our cannabis-related marketing materials are intended for use in jurisdictions in which cannabis is legal. Both Michigan law and municipal ordinances have licensing and permitting requirements and processes for cannabis-related businesses. You should consult an attorney or other knowledgeable professional on such matters.

## Real Estate Agency Relationships:

*Seller's Agent* - A seller's agent, under a listing agreement with the seller, acts solely on behalf of the seller. A seller can authorize a seller's agent to work with subagents, buyer's agents and/or transaction coordinators. A subagent is one who has agreed to work with the listing agent, and who, like the listing agent, acts solely on behalf of the seller. Seller's agents and subagents will disclose to the seller known information about the buyer which may be used to the benefit of the seller. Individual services may be waived by the seller through execution of a limited service agreement.

*Buyer's Agent* - A buyer's agent, under a buyer's agency agreement with the buyer, acts solely on behalf of the buyer. Buyer's agents and subagents will disclose to the buyer known information about the seller which may be used to benefit the buyer. Individual services may be waived by the buyer through execution of a limited service agreement.

*Dual Agents* - A real estate licensee can be the agent of both the seller and the buyer in a transaction, but only with the knowledge and informed consent, in writing, of both the seller and the buyer. In such a dual agency situation, the agent will not be able to disclose all known information to either the seller or the buyer. The obligations of a dual agent are subject to any specific provisions set forth in any agreement between the dual agent, the seller, and the buyer.

