



# 1035-1045 E Green St.

Pasadena, California 91101

## Property Highlights

- Historical office building once occupied by Albert Einstein (Suite 201)
- Great Green Street Location
- Minutes from 210, 134 & 110 Freeways
- Local Destinations: Pasadena Convention Center, South Lake District, Playhouse District, Pasadena City College, CalTech
- Parking \$85 per space, per month



For more information:

**Sheri McCanless**

626 204 1508 • smccanless@naicapital.com • CA CalDRE #01306519

Space	Lease Rate	Size (SF)
-------	------------	-----------

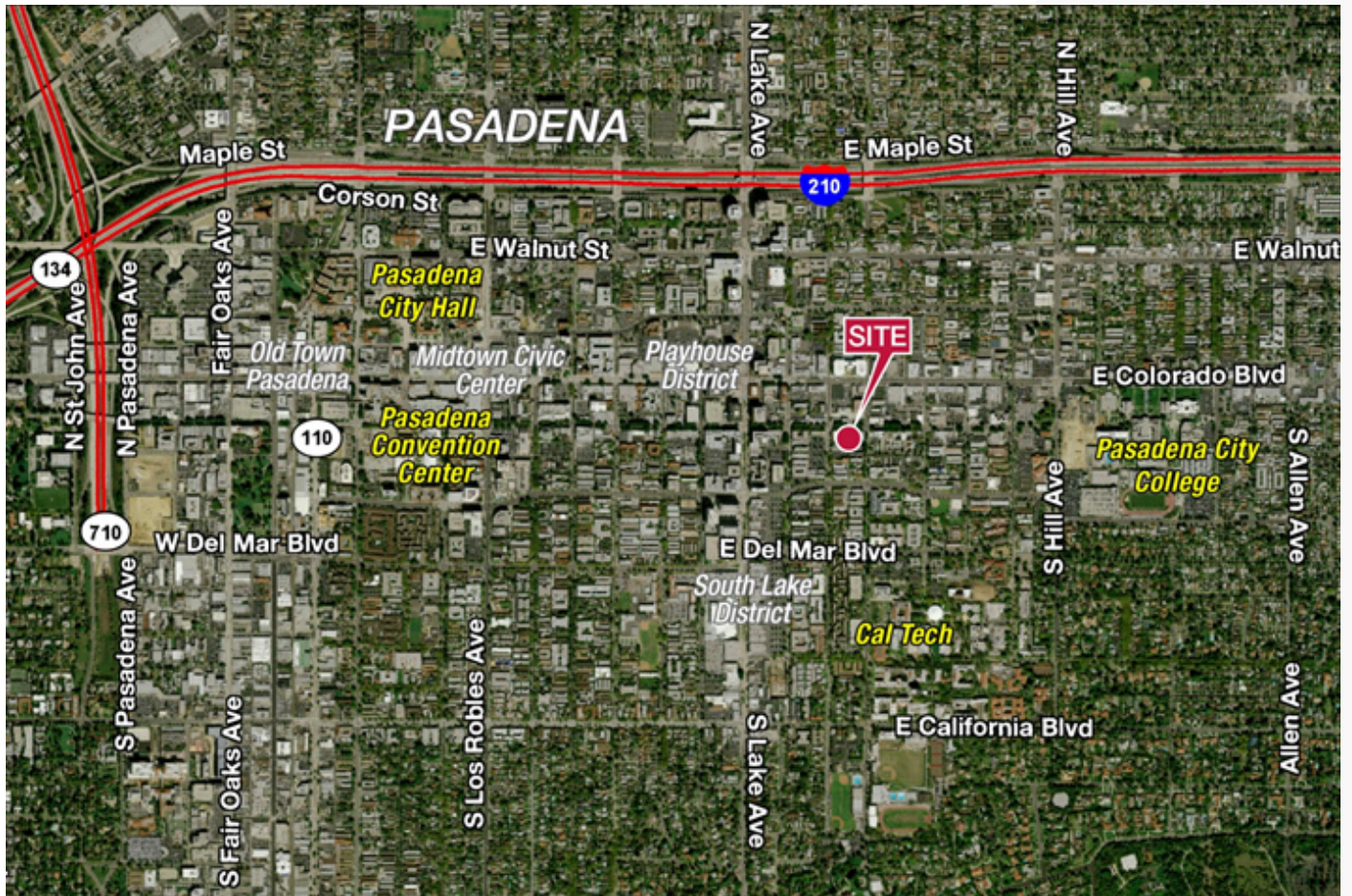
NO WARRANTY, EXPRESS OR IMPLIED, IS MADE AS TO THE ACCURACY OF THE INFORMATION CONTAINED HEREIN. THIS INFORMATION IS SUBMITTED SUBJECT TO ERRORS, OMISSIONS, CHANGE OF PRICE, RENTAL OR OTHER CONDITIONS, WITHDRAWAL WITHOUT NOTICE, AND IS SUBJECT TO ANY SPECIAL LISTING CONDITIONS IMPOSED BY OUR PRINCIPALS. COOPERATING BROKERS, BUYERS, TENANTS AND OTHER PARTIES WHO RECEIVE THIS DOCUMENT SHOULD NOT RELY ON IT, BUT SHOULD USE IT AS A STARTING POINT OF ANALYSIS, AND SHOULD INDEPENDENTLY CONFIRM THE ACCURACY OF THE INFORMATION CONTAINED HEREIN THROUGH A DUE DILIGENCE REVIEW OF THE BOOKS, RECORDS, FILES AND DOCUMENTS THAT CONSTITUTE RELIABLE SOURCES OF THE INFORMATION DESCRIBED HEREIN. LOGOS ARE FOR IDENTIFICATION PURPOSES ONLY AND MAY BE TRADEMARKS OF THEIR RESPECTIVE COMPANIES. NAI CAPITAL, INC. CAL DRE LIC. #02130474

NAI Capital  
225 S. Lake Avenue, Suite M270  
Pasadena, CA 91101  
626 564 4800  
[www.naicapital.com](http://www.naicapital.com)



For Lease

# The Einstein Building



**Sheri McCanless**

626.204.1508

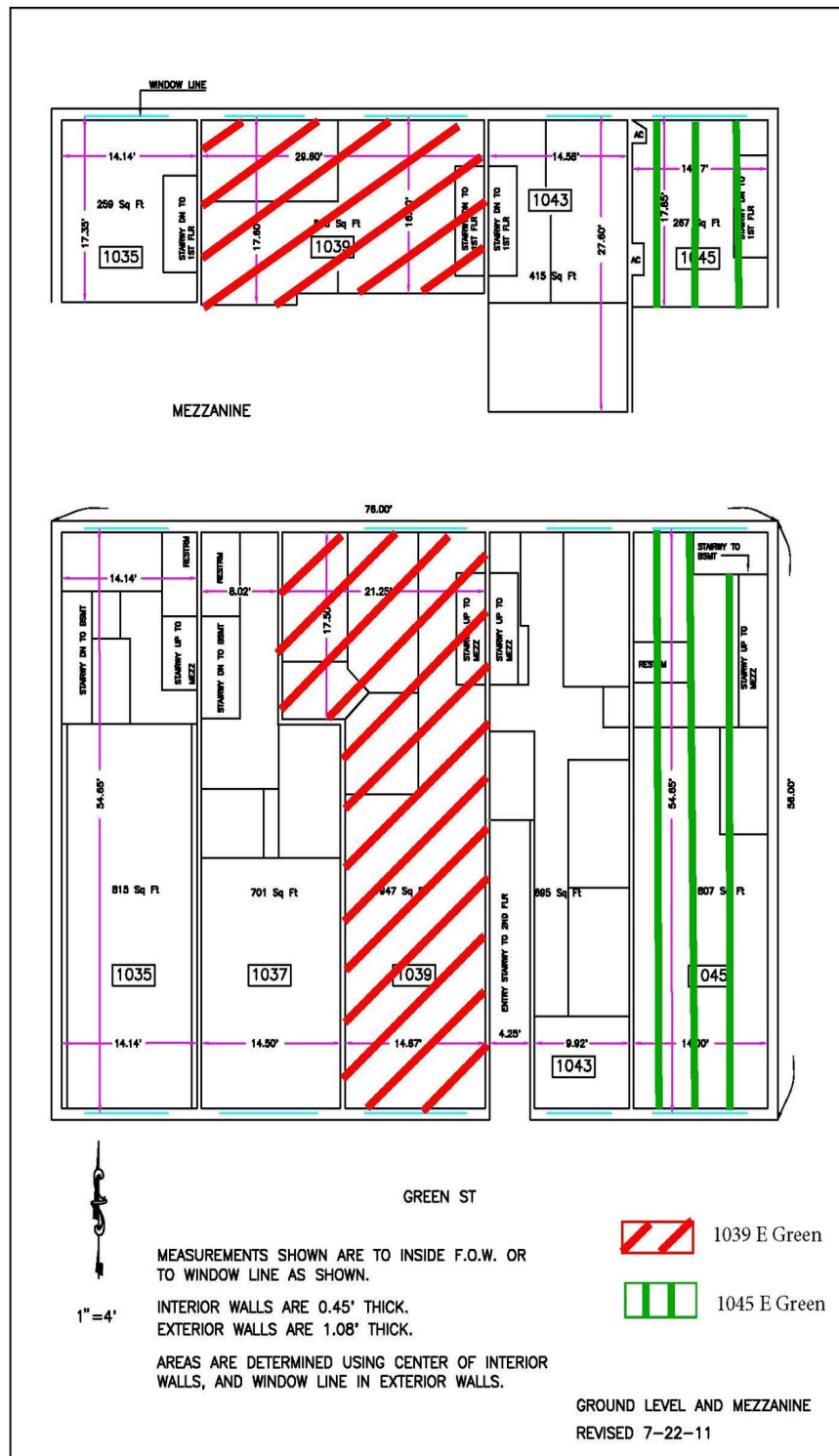
smccanless@naicapital.com

CalDRE #01306519

**NAI**Capital  
COMMERCIAL REAL ESTATE SERVICES, WORLDWIDE

For Lease

# The Einstein Building



Sheri McCanless

626.204.1508

smccanless@naicapital.com

CalDRE #01306519

For Lease

# The Einstein Building

1041 East Green Street



**Sheri McCanless**

626.204.1508

smccanless@naicapital.com

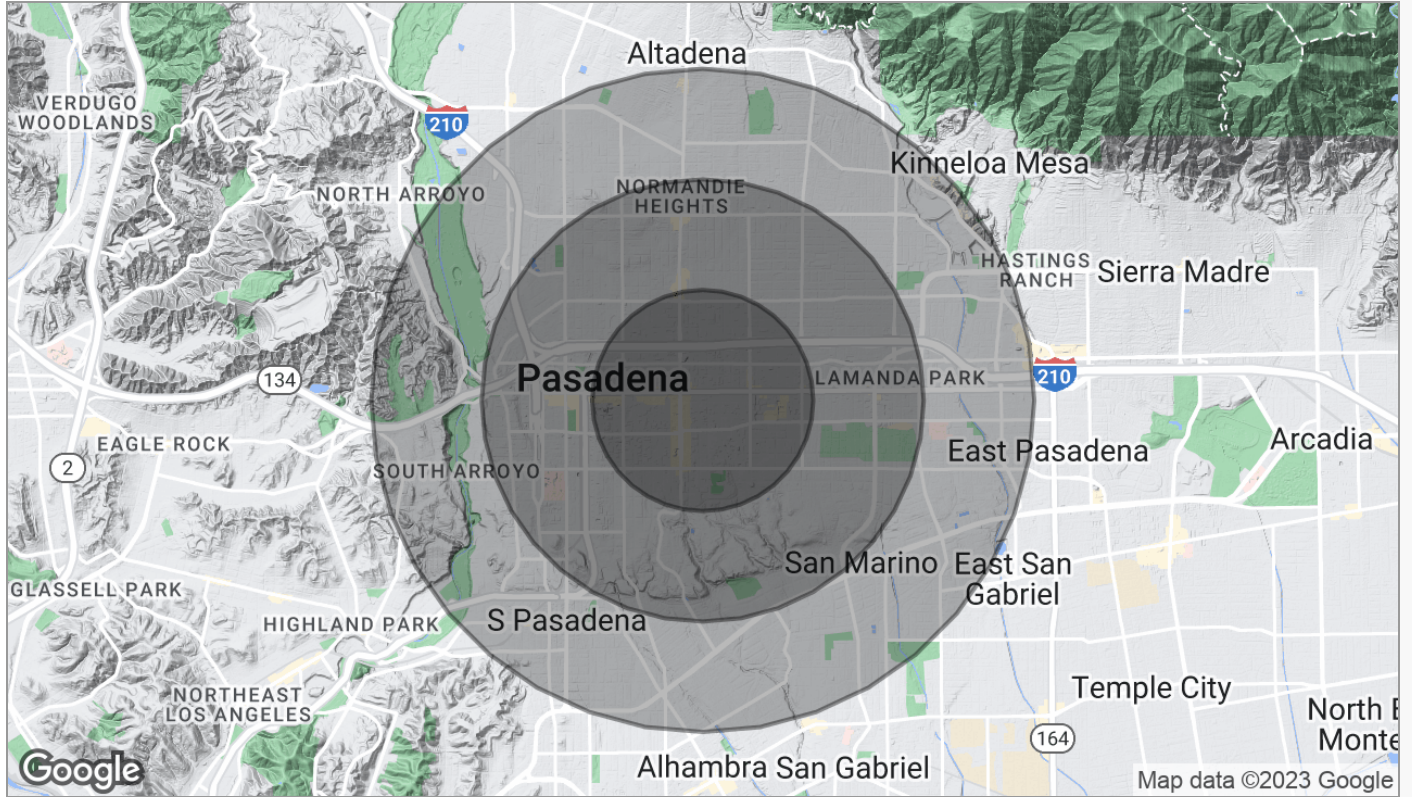
CalDRE #01306519

**NAI**Capital  
COMMERCIAL REAL ESTATE SERVICES, WORLDWIDE



For Lease

# The Einstein Building



Population	1 Mile	2 Miles	3 Miles
TOTAL POPULATION	35,298	104,236	198,836
MEDIAN AGE	33.8	36.2	38.1
MEDIAN AGE (MALE)	32.8	35.6	37.3
MEDIAN AGE (FEMALE)	34.3	36.8	39.1
Households & Income	1 Mile	2 Miles	3 Miles
TOTAL HOUSEHOLDS	16,040	42,597	76,989
# OF PERSONS PER HH	2.2	2.4	2.6
AVERAGE HH INCOME	\$77,672	\$91,590	\$101,590
AVERAGE HOUSE VALUE	\$576,326	\$697,897	\$719,231
Race	1 Mile	2 Miles	3 Miles
% WHITE	63.1%	61.7%	60.8%
% BLACK	6.4%	8.6%	8.5%
% ASIAN	20.3%	16.2%	17.5%
% HAWAIIAN	0.6%	0.2%	0.2%
% INDIAN	0.4%	0.4%	0.4%
% OTHER	5.9%	9.7%	9.5%
Ethnicity	1 Mile	2 Miles	3 Miles
% HISPANIC	26.8%	32.1%	30.3%

\* Demographic data derived from 2020 ACS - US Census

**Sheri McCanless**

626.204.1508

smccanless@naicapital.com

CalDRE #01306519

**NAI**Capital  
COMMERCIAL REAL ESTATE SERVICES, WORLDWIDE