



CBCSUNCOAST.COM

FOR LEASE

6331 CAROLINA BEACH RD, UNIT 5

Wilmington, NC 28412

AVAILABLE SPACE*
9,000 SF

LEASE RATE
\$14.00 Annual/SF

CONTACT INFO

Mason Watkins
704 661 4077
mason.watkins@cbcsuncoast.com

COLDWELL BANKER COMMERCIAL
SUN COAST PARTNERS
1430 Commonwealth Drive, Suite 102
Wilmington, NC 28403
910.350.1200



COLDWELL
BANKER
COMMERCIAL
SUN COAST PARTNERS



6331 CAROLINA BEACH RD, UNIT 5
Wilmington, NC 28412

LEASE



PROPERTY OVERVIEW

9,000 +/- SF of front row retail space available for lease. Located on Carolina Beach Rd., this retail unit is comprised of a large showroom, storage area, 3 private offices, and 2 restrooms. Currently occupied by Habitat for Humanity, the space will be available 8-1-23. Zoned B-2 by New Hanover County, this property can support a wide variety of uses.

Contact agent to set up a showing.

DO NOT DISTURB CURRENT TENANT.

OFFERING SUMMARY

Available SF:	9,000 SF*
Lease Rate:	\$14.00 Annual/SF
Lease Type:	Modified Gross
Zoning:	B-2

CBCSUNCOAST.COM

Mason Watkins
704 661 4077
mason.watkins@cbcsuncoast.com



6331 CAROLINA BEACH RD, UNIT 5
Wilmington, NC 28412

LEASE



CBCSUNCOAST.COM

Mason Watkins
704 661 4077
mason.watkins@cbcsuncoast.com

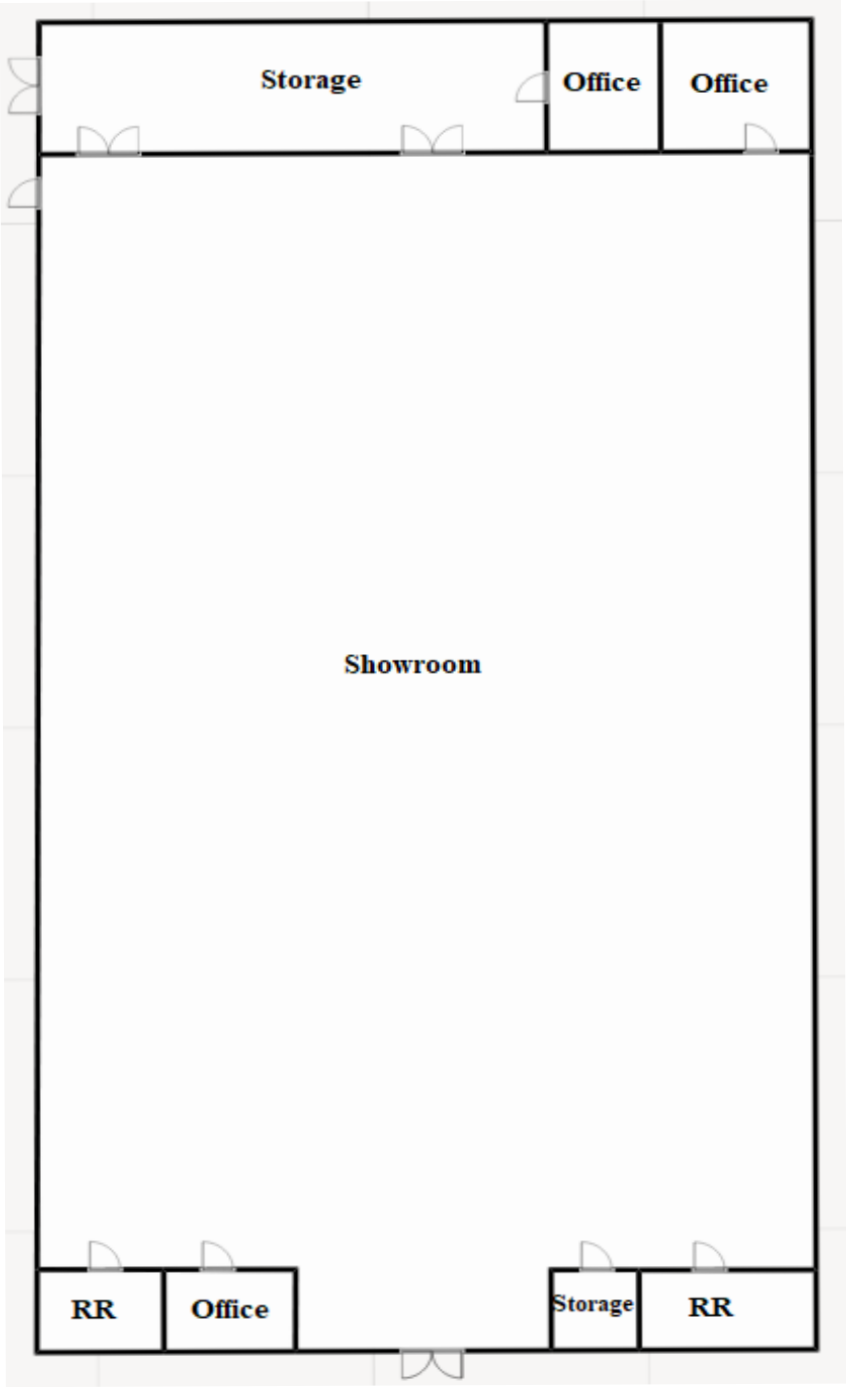


6331 CAROLINA BEACH RD, UNIT 5

Wilmington, NC 28412

FLOORPLAN - NOT TO SCALE

LEASE





6331 CAROLINA BEACH RD, UNIT 5
Wilmington, NC 28412

LEASE



CBCSUNCOAST.COM

Mason Watkins
704 661 4077
mason.watkins@cbcsuncoast.com



6331 CAROLINA BEACH RD, UNIT 5
Wilmington, NC 28412

LEASE

COMMERCIAL BROKER

Mason Watkins
704 661 4077
mason.watkins@cbcsuncoast.com
NC #305575



SUN COAST PARTNERS

©2023 Coldwell Banker. All Rights Reserved. Coldwell Banker and the Coldwell Banker Commercial logos are trademarks of Coldwell Banker Real Estate LLC. The Coldwell Banker® System is comprised of company owned offices which are owned by a subsidiary of Realogy Brokerage Group LLC and franchised offices which are independently owned and operated. The Coldwell Banker System fully supports the principles of the Equal Opportunity Act.

*The land acreage and/or building square footage was obtained from the County's Geographical Information System or other electronic resources. For exact square footage and/or acreage, we recommend that prior to purchase, a prospective Buyer/Tenant obtain a boundary survey or have the building measured professionally.