

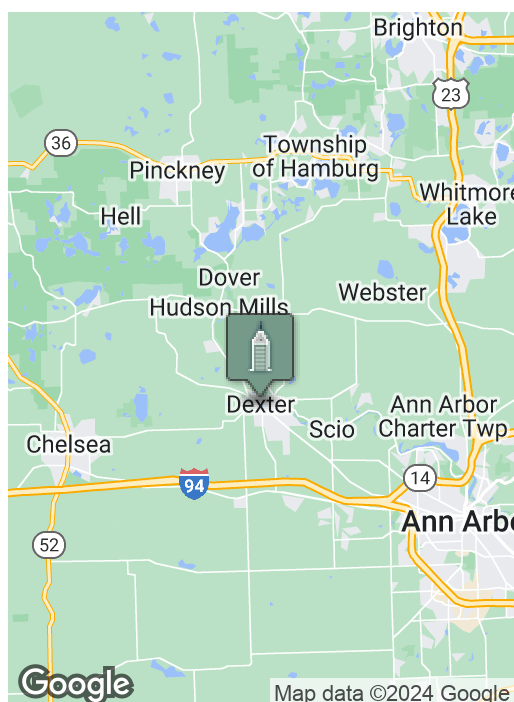
Medical | Dental Office

3060 BAKER, DEXTER, MI 48130



Swisher
COMMERCIAL

FOR LEASE



SUMMARY

Available SF:	3,337 SF
Ground Level:	2,137 SF \$24.00/SF Plus Utilities
Lower Level:	1,200 SF \$10.00/SF Plus Utilities
Zoning:	VC, VILLAGE COMMERCIAL

PROPERTY OVERVIEW

Stand alone turnkey dental or medical building with private onsite parking. Located on Baker Road with easy access to I-94 and M-14.

Ground level (2,137 SF) features beautiful waiting and reception areas, five exam rooms with sinks, lab and sanitizing rooms, x-ray space, private offices and multiple ADA restrooms on the main level. Partially finished lower level (1,200 SF) has additional kitchen and restroom with ample storage.

***Building
relationships.***

208 East Washington Street Ann Arbor, MI 48104

734.663.0501

Jeff Evans

734.926.0222

JEFFEVANS@SWISHERCOMMERCIAL.COM

SWISHERCOMMERCIAL.COM

Medical | Dental Office for Lease

3060 BAKER, DEXTER, MI 48130



***Building
relationships.***

208 East Washington Street Ann Arbor, MI 48104

734.663.0501

Jeff Evans

734.926.0222

JEFFEVANS@SWISHERCOMMERCIAL.COM

SWISHERCOMMERCIAL.COM

Medical | Dental Office for Lease

3060 BAKER, DEXTER, MI 48130



***Building
relationships.***

208 East Washington Street Ann Arbor, MI 48104

734.663.0501

Jeff Evans

734.926.0222

JEFFEVANS@SWISHERCOMMERCIAL.COM

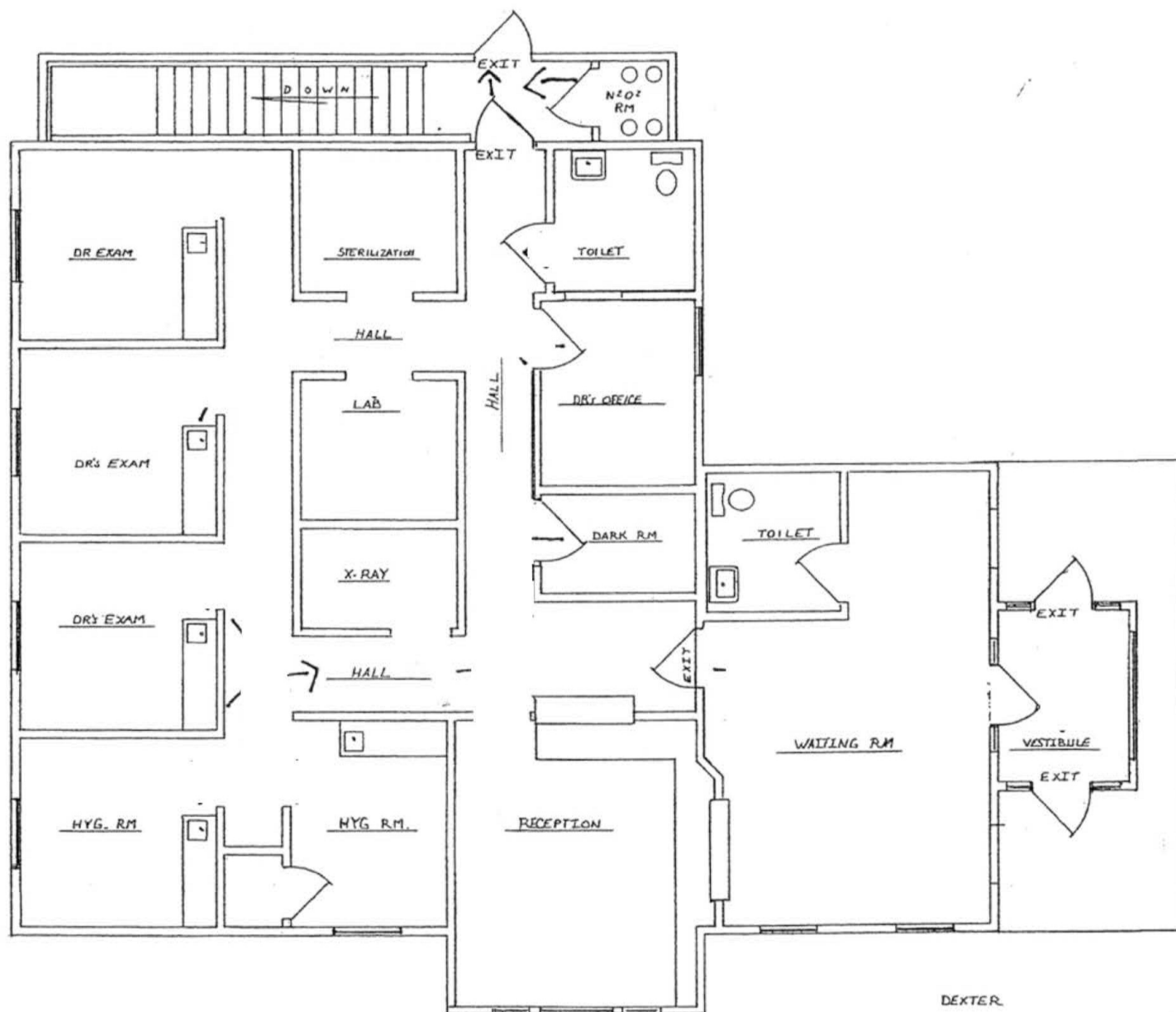
SWISHERCOMMERCIAL.COM

Medical | Dental Office for Lease

3060 BAKER, DEXTER, MI 48130



Swisher
COMMERCIAL



***Building
relationships.***

208 East Washington Street Ann Arbor, MI 48104

734.663.0501

Jeff Evans

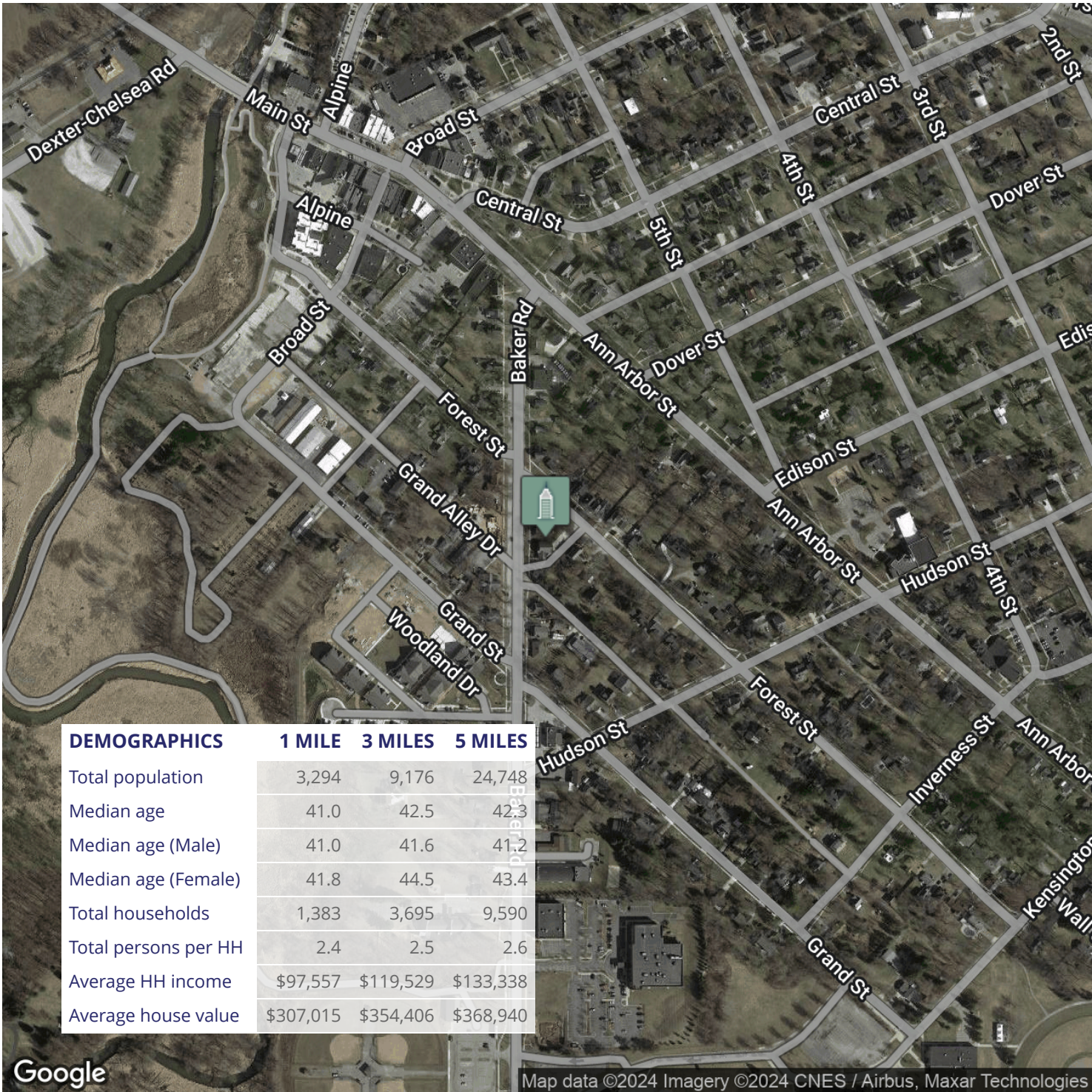
734.926.0222

JEFFEVANS@SWISHERCOMMERCIAL.COM

SWISHERCOMMERCIAL.COM

Medical | Dental Office for Lease

3060 BAKER, DEXTER, MI 48130



**Building
relationships.**

208 East Washington Street Ann Arbor, MI 48104

734.663.0501

Jeff Evans

734.926.0222

JEFFEVANS@SWISHERCOMMERCIAL.COM

SWISHERCOMMERCIAL.COM