

DUNLAWTON CENTRE | OFFICE CONDO FOR SALE



PROPERTY DESCRIPTION

1,950 SF Office Condo For Sale in Dunlawton Center.  
Features 6 offices, 3 restrooms, conference room,  
reception, lobby, and breakroom.  
Great for Medical and Professional Use.  
Monument Sign.  
Located just east of Interstate 95.  
Near Super Target, Lowe’s Home Improvement, BJ’s  
Wholesale Club, and LA Fitness.  
The space is turnkey ready for immediate occupancy.  
Condo Fees \$1,472.99 per quarter.

LOCATION DESCRIPTION

Located on Dunlawton Avenue east of Interstate 95.

LOCATION ADDRESS

1730 Dunlawton Avenue, Suite 3  
Port Orange, FL 32127

JOHN W. TROST, CCIM

Principal | Senior Advisor  
O: 386.301.4581 | C: 386.295.5723  
john.trost@svn.com

OFFERING SUMMARY

SALE PRICE:	\$489,500
AVAILABLE SF:	1,950 SF
YEAR BUILT:	2003
PARCEL NO:	6317-33-01-0030
TRAFFIC COUNT:	52,000 AADT
ZONING:	PO, Professional Office

DEMOGRAPHICS	1 MILE	3 MILES	5 MILES
TOTAL HOUSEHOLDS	3,383	27,660	54,818
TOTAL POPULATION	7,668	58,408	105,388
AVERAGE HH INCOME	\$69,311	\$60,116	\$57,290



## ADDITIONAL PHOTOS



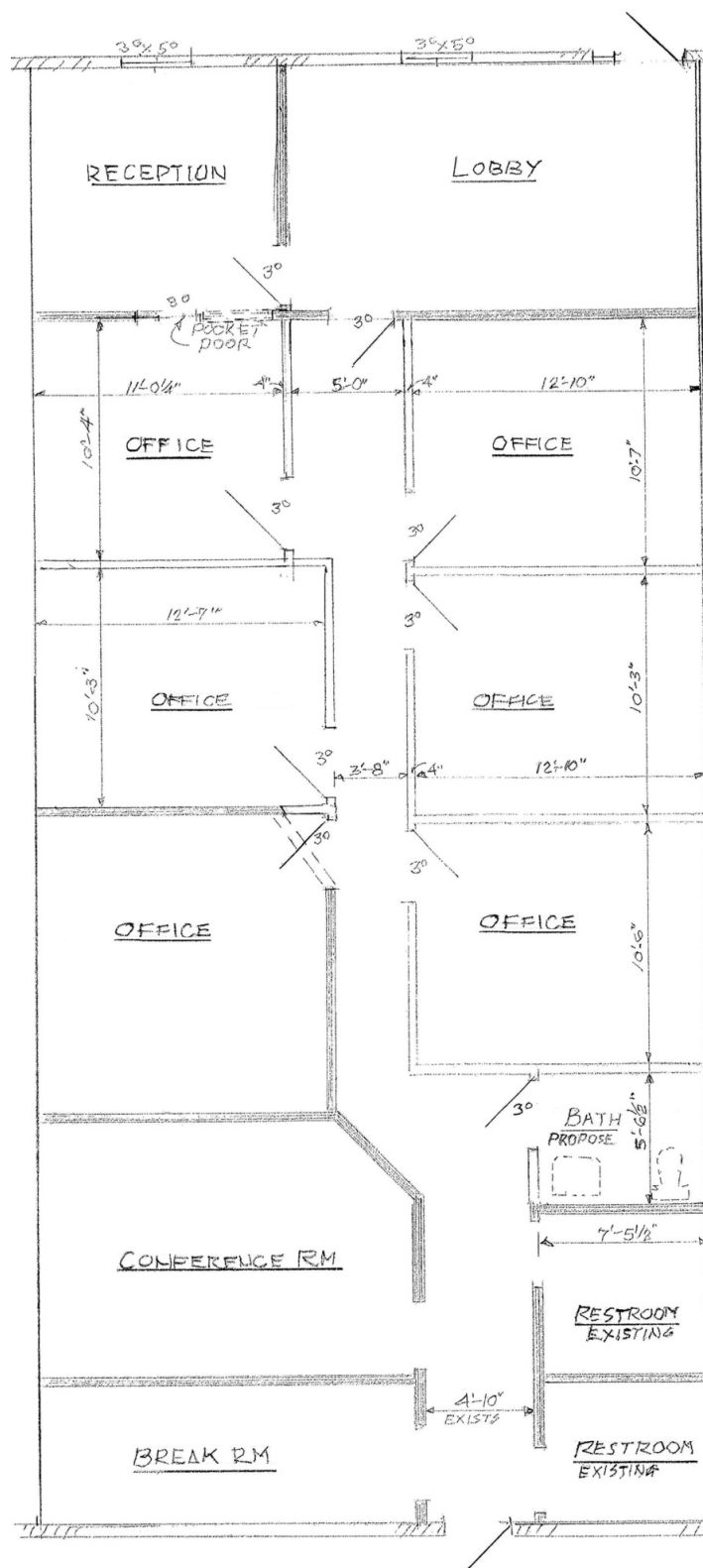
**JOHN W. TROST, CCIM**  
Principal | Senior Advisor  
O: 386.301.4581 | C: 386.295.5723  
[john.trost@svn.com](mailto:john.trost@svn.com)

**DUNLAWTON CENTER | OFFICE CONDO FOR SALE** | 1730 Dunlawton Avenue, Suite 3 Port Orange, FL 32127

We obtained the information above from sources we believe to be reliable. However, we have not verified its accuracy and make no guarantee, warranty or representation about it. It is submitted subject to the possibility of errors, omissions, change of price, rental or other conditions, prior sale, lease or financing, or withdrawal without notice. We include projections, opinions, assumptions or estimates for example only, and they may not represent current or future performance of the property. You and your tax and legal advisors should conduct your own investigation of the property and transaction. All SVN offices are independently owned and operated.



# FLOOR PLAN



**JOHN W. TROST, CCIM**

Principal | Senior Advisor

O: 386.301.4581 | C: 386.295.5723

john.trost@svn.com

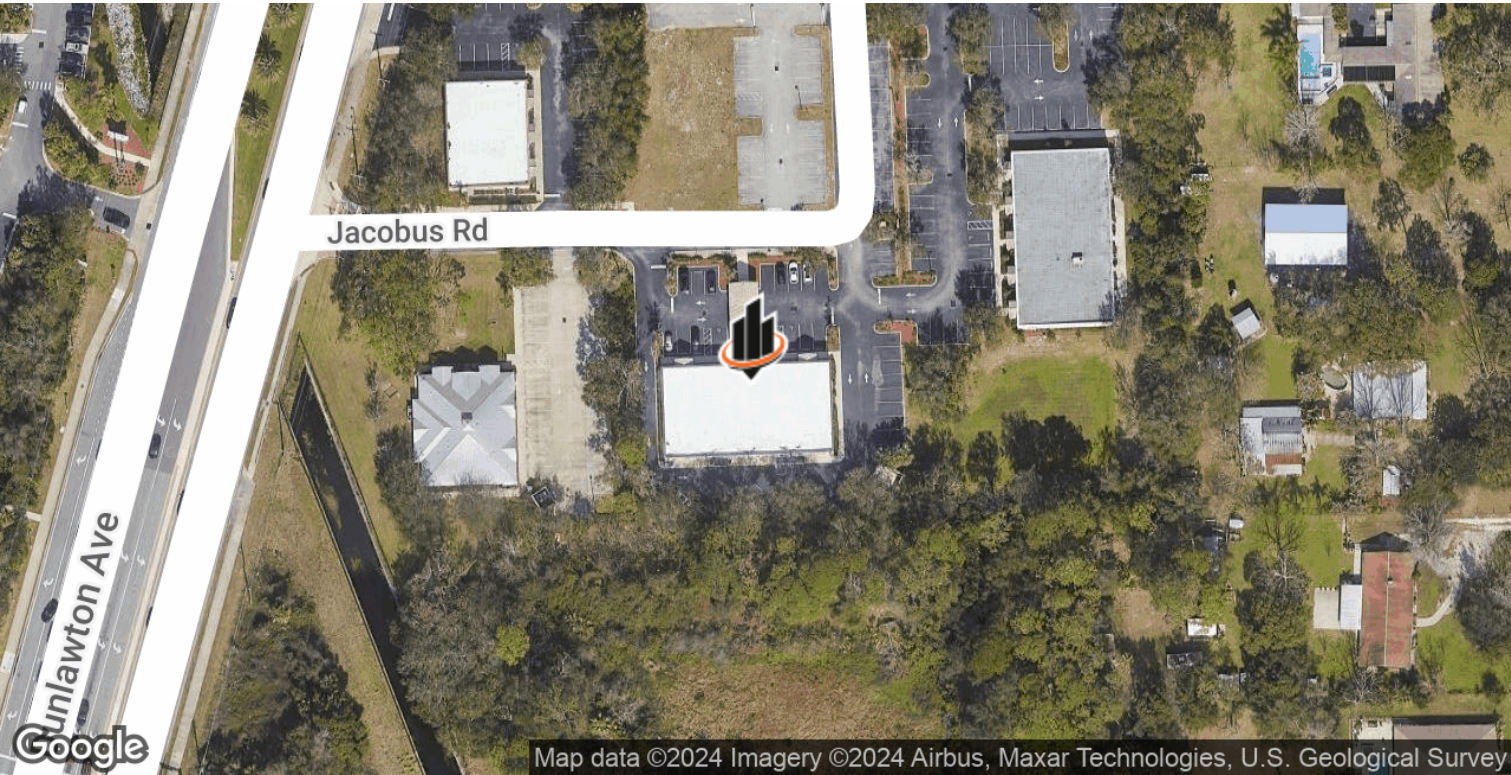
**DUNLAWTON CENTER | OFFICE CONDO FOR SALE** | 1730 Dunlawton Avenue, Suite 3 Port Orange, FL 32127

We obtained the information above from sources we believe to be reliable. However, we have not verified its accuracy and make no guarantee, warranty or representation about it. It is submitted subject to the possibility of errors, omissions, change of price, rental or other conditions, prior sale, lease or financing, or withdrawal without notice. We include projections, opinions, assumptions or estimates for example only, and they may not represent current or future performance of the property. You and your tax and legal advisors should conduct your own investigation of the property and transaction. All SVN offices are independently owned and operated.





LOCATION MAPS



**JOHN W. TROST, CCIM**  
Principal | Senior Advisor  
O: 386.301.4581 | C: 386.295.5723  
john.trost@svn.com

**DUNLAWTON CENTER | OFFICE CONDO FOR SALE** | 1730 Dunlawton Avenue, Suite 3 Port Orange, FL 32127

We obtained the information above from sources we believe to be reliable. However, we have not verified its accuracy and make no guarantee, warranty or representation about it. It is submitted subject to the possibility of errors, omissions, change of price, rental or other conditions, prior sale, lease or financing, or withdrawal without notice. We include projections, opinions, assumptions or estimates for example only, and they may not represent current or future performance of the property. You and your tax and legal advisors should conduct your own investigation of the property and transaction. All SVN offices are independently owned and operated.

