



Office Building For Lease

1,000 - 18,500 SF available



920 Davis Road

Elgin, IL 60123

Kevin J. O'Donnell
Managing Broker
630.444.0444
kevin@odcre.com

Meredith L. Klug
Broker
630.444.0444
meredith@odcre.com

920 Davis Road

Elgin, IL 60123

Office Property For Lease



OFFERING SUMMARY

Available SF: 1,000 - 18,500 SF

Lease Rate: \$14.00 SF/yr (Gross)

Building Size: 92,500 SF

PROPERTY HIGHLIGHTS

- Located just off I-90 four-way interchange at Route 31
- Signage on building facing I-90 available
- Premium professional setting
- Spaces available immediately in move-in condition
- Abundant parking
- Nearby amenities include dining and shopping
- Can accommodate a full-floor user
- LOW GROSS RATE

DEMOGRAPHICS

	1 Mile	5 Miles	10 Miles
Total Households:	2,226	62,252	159,177
Total Population:	5,698	185,008	472,447
Average HH Income:	\$66,408	\$73,091	\$92,012

for more information contact:

Kevin J. O'Donnell
Managing Broker
t: 630.444.0444
e: kevin@odcre.com

Meredith L. Klug
Broker
t: 630.444.0444
e: meredith@odcre.com

920 Davis Road

Elgin, IL 60123

Office Property For Lease



for more information contact:

Kevin J. O'Donnell

Managing Broker

t: 630.444.0444

e: kevin@odcre.com

Meredith L. Klug

Broker

t: 630.444.0444

e: meredith@odcre.com

ADDITIONAL
PHOTOS

920 Davis Road

Elgin, IL 60123

Office Property For Lease



for more information contact:

Kevin J. O'Donnell

Managing Broker

t: 630.444.0444

e: kevin@odcre.com

Meredith L. Klug

Broker

t: 630.444.0444

e: meredith@odcre.com

P • 4

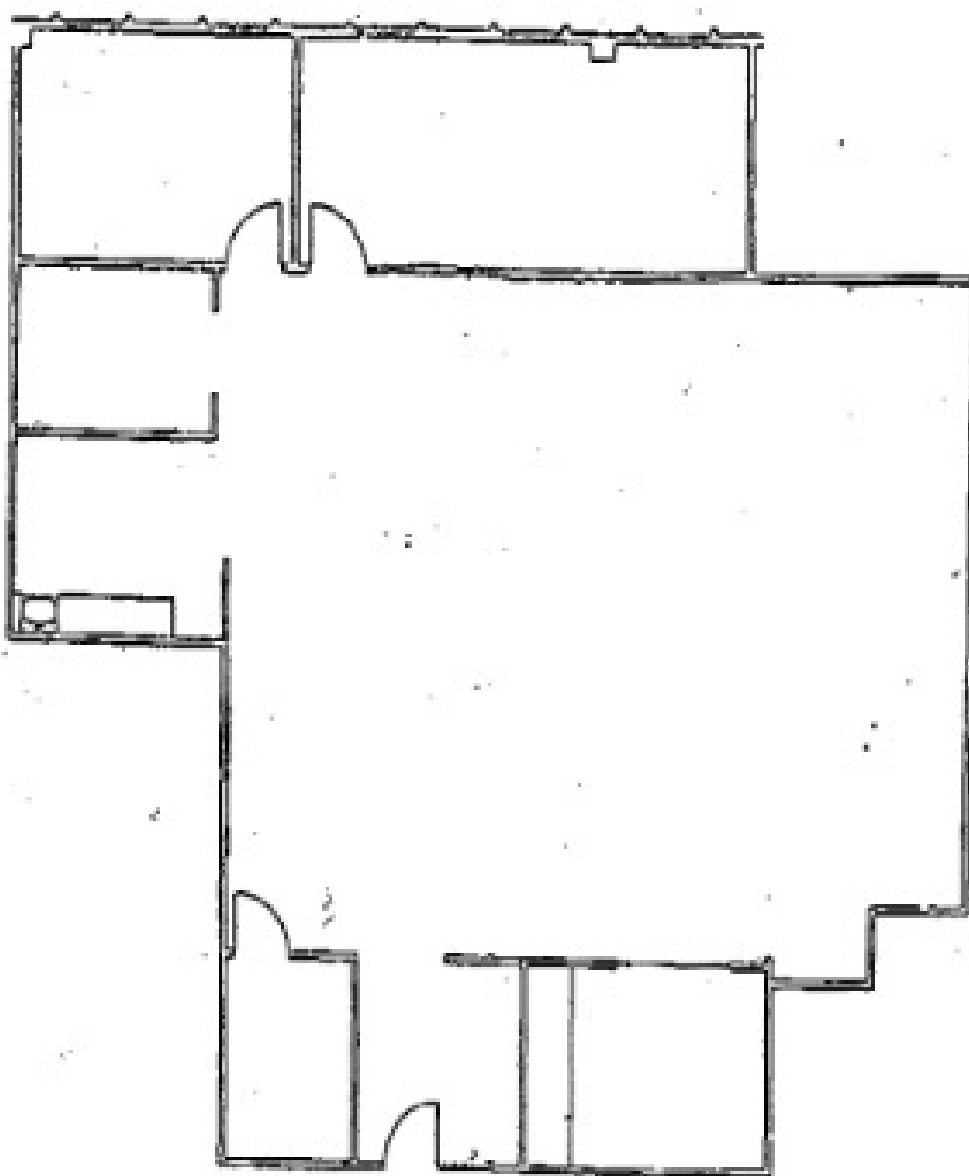
920 Davis Road

Elgin, IL 60123

Office Property For Lease

Suite 107

2,792 SF



for more information contact:

Kevin J. O'Donnell

Managing Broker

t: 630.444.0444

e: kevin@odcre.com

Meredith L. Klug

Broker

t: 630.444.0444

e: meredith@odcre.com

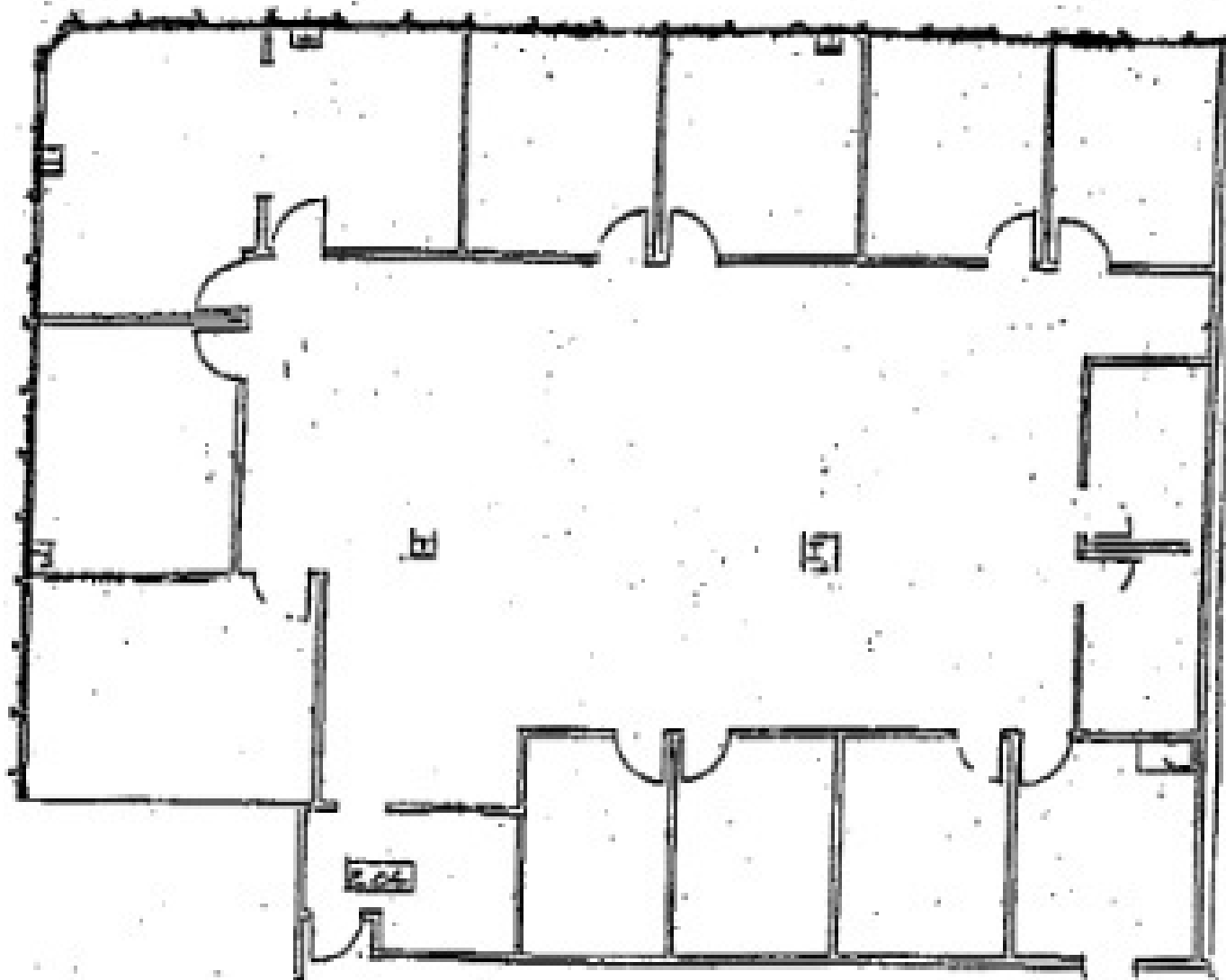
920 Davis Road

Elgin, IL 60123

Office Property For Lease

Suite 204

4,704 SF



for more information contact:

Kevin J. O'Donnell

Managing Broker

t: 630.444.0444

e: kevin@odcre.com

Meredith L. Klug

Broker

t: 630.444.0444

e: meredith@odcre.com

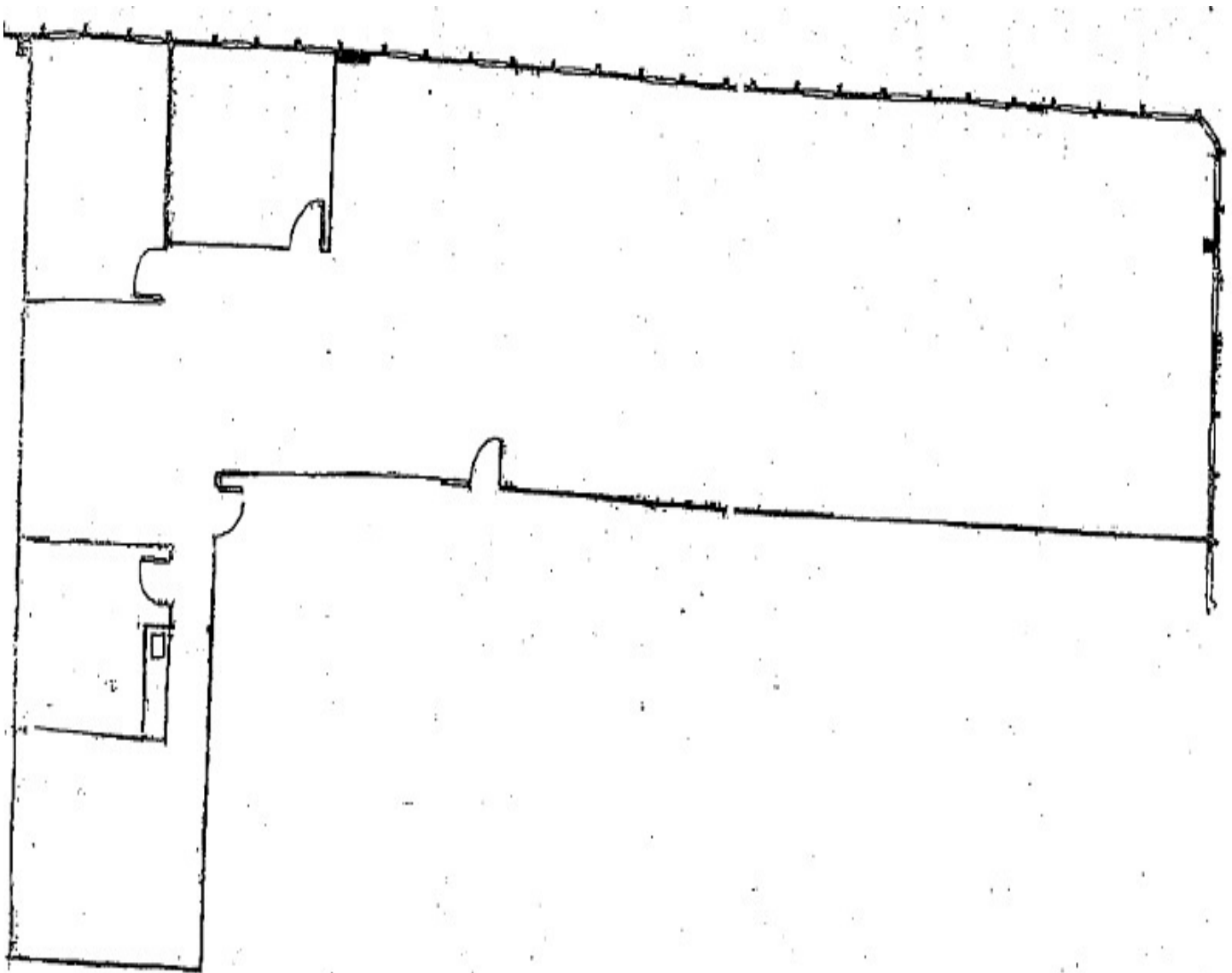
920 Davis Road

Elgin, IL 60123

Office Property For Lease

Suite 307

3,861 SF



for more information contact:

Kevin J. O'Donnell
Managing Broker
t: 630.444.0444
e: kevin@odcre.com

Meredith L. Klug
Broker
t: 630.444.0444
e: meredith@odcre.com

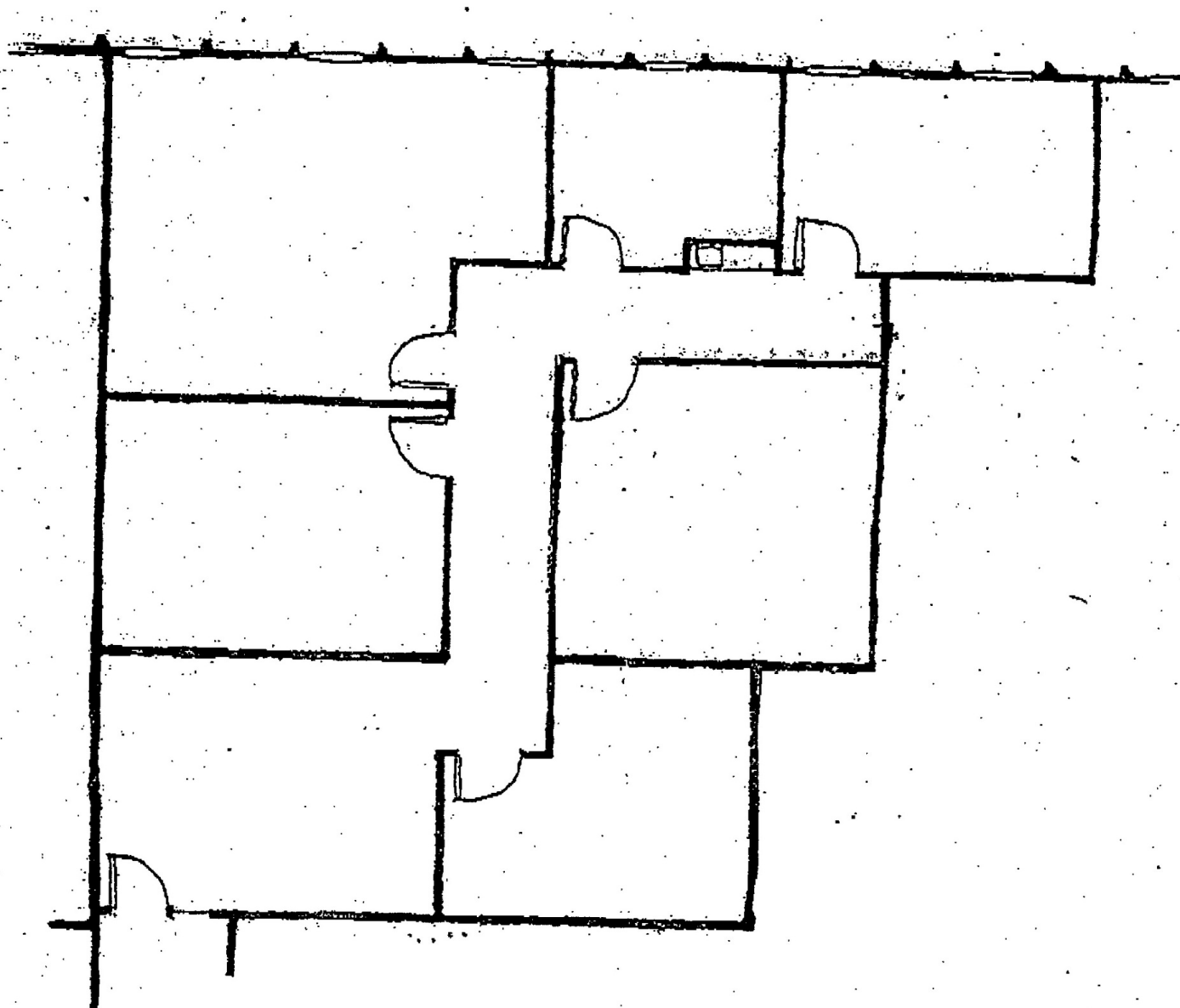
920 Davis Road

Elgin, IL 60123

Office Property For Lease

Suite 310

1,986 SF



for more information contact:

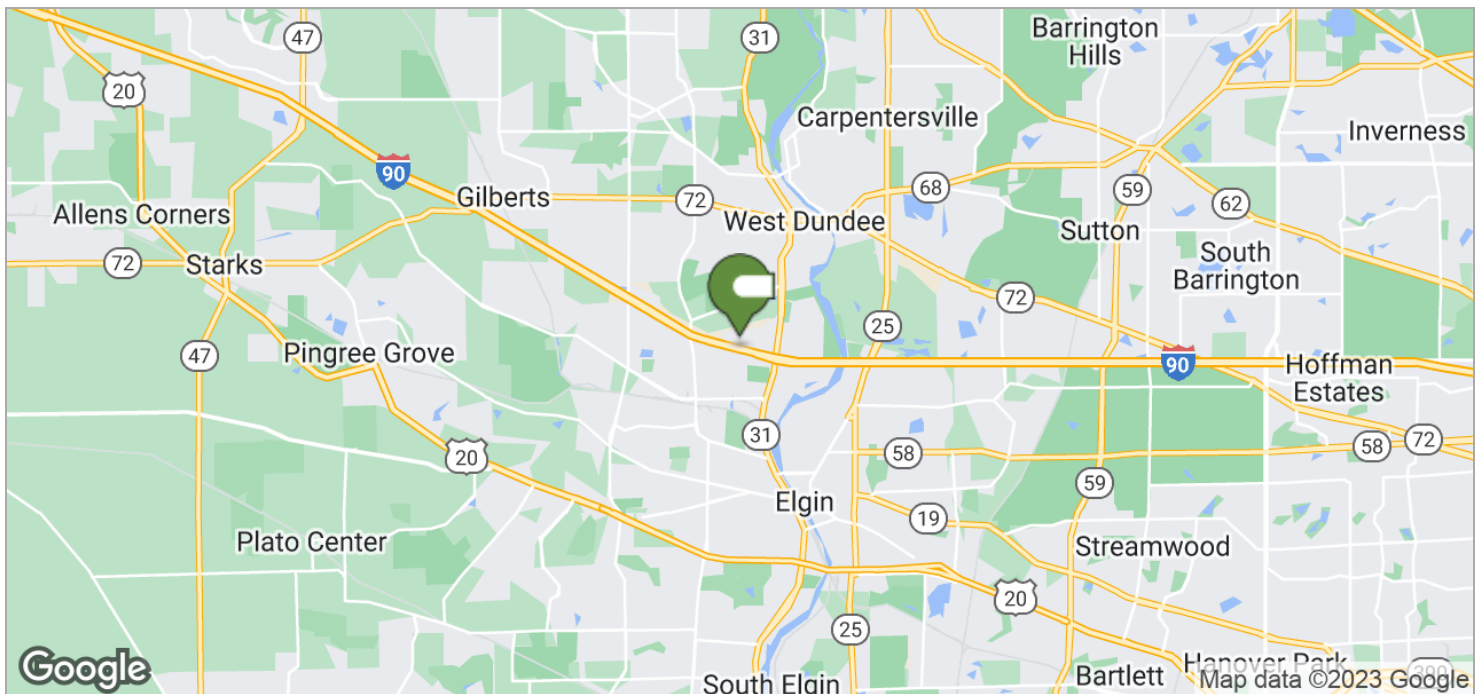
Kevin J. O'Donnell
Managing Broker
t: 630.444.0444
e: kevin@odcre.com

Meredith L. Klug
Broker
t: 630.444.0444
e: meredith@odcre.com

920 Davis Road

Elgin, IL 60123

Office Property For Lease



for more information contact:

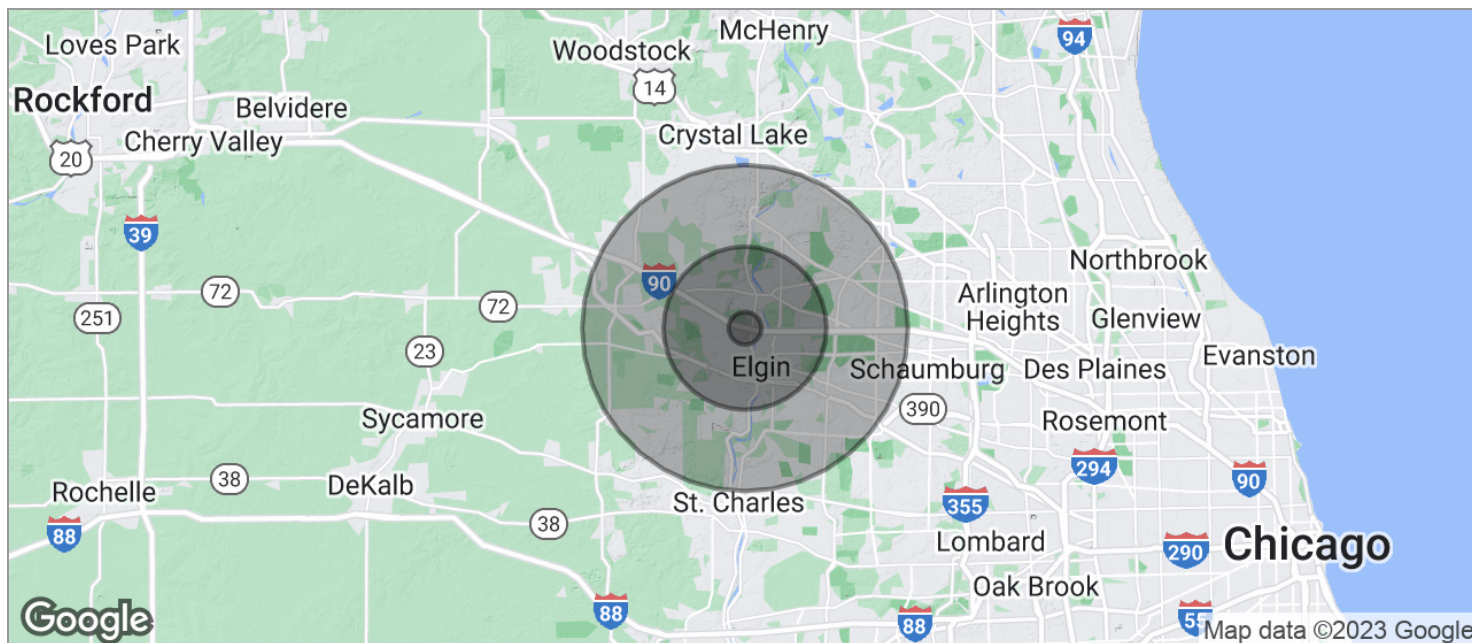
Kevin J. O'Donnell
Managing Broker
t: 630.444.0444
e: kevin@odcre.com

Meredith L. Klug
Broker
t: 630.444.0444
e: meredith@odcre.com

920 Davis Road

Elgin, IL 60123

Office Property For Lease



POPULATION

	1 MILE	5 MILES	10 MILES
TOTAL POPULATION	5,698	185,008	472,447
MEDIAN AGE	36.4	33.1	34.9
MEDIAN AGE (MALE)	34.3	32.1	34.2
MEDIAN AGE (FEMALE)	38.2	34.4	35.7

HOUSEHOLDS & INCOME

	1 MILE	5 MILES	10 MILES
TOTAL HOUSEHOLDS	2,226	62,252	159,177
# OF PERSONS PER HH	2.6	3.0	3.0
AVERAGE HH INCOME	\$66,408	\$73,091	\$92,012
AVERAGE HOUSE VALUE	\$359,385	\$253,276	\$313,212

* Demographic data derived from 2020 ACS - US Census

for more information contact:

Kevin J. O'Donnell

Managing Broker

t: 630.444.0444

e: kevin@odcre.com

Meredith L. Klug

Broker

t: 630.444.0444

e: meredith@odcre.com