

# Office Spaces in Washington County

14125 SW FARMINGTON ROAD | BEAVERTON, OR 97005



14125



Seth Platsman  
503.416.0091  
seth@macadamforbes.com  
Licensed in OR

2 Centerpointe Drive, Suite 500 | Lake Oswego, OR 97035 | [WWW.MACADAMFORBES.COM](http://WWW.MACADAMFORBES.COM) | 503.227.2500

All of the information contained herein was obtained either from the owner or other parties we consider reliable. We have no reason to doubt its accuracy, however we do not guarantee it.

## FOR LEASE

**MACADAM  
FORBES**  
COMMERCIAL REAL ESTATE SERVICES



# FOR LEASE

14125 SW Farmington Road, Beaverton, OR 97005



## PROPERTY DESCRIPTION

14125 SW Farmington Road is a 7,500-square-foot multi-tenant office building in the highly desirable Beaverton submarket. The property is on a 31,454 square foot lot. There are two suites available well suited for a wide array of office uses.

## PROPERTY HIGHLIGHTS

- Abundant off-street parking
- Frontage along SW Farmington Road
- Flexible space configurations

## OFFERING SUMMARY

Lease Rate:	Negotiable
Available SF:	Fully Leased
Lot Size:	31,454 SF
Building Size:	7,500 SF

## SPACES

## SPACE SIZE



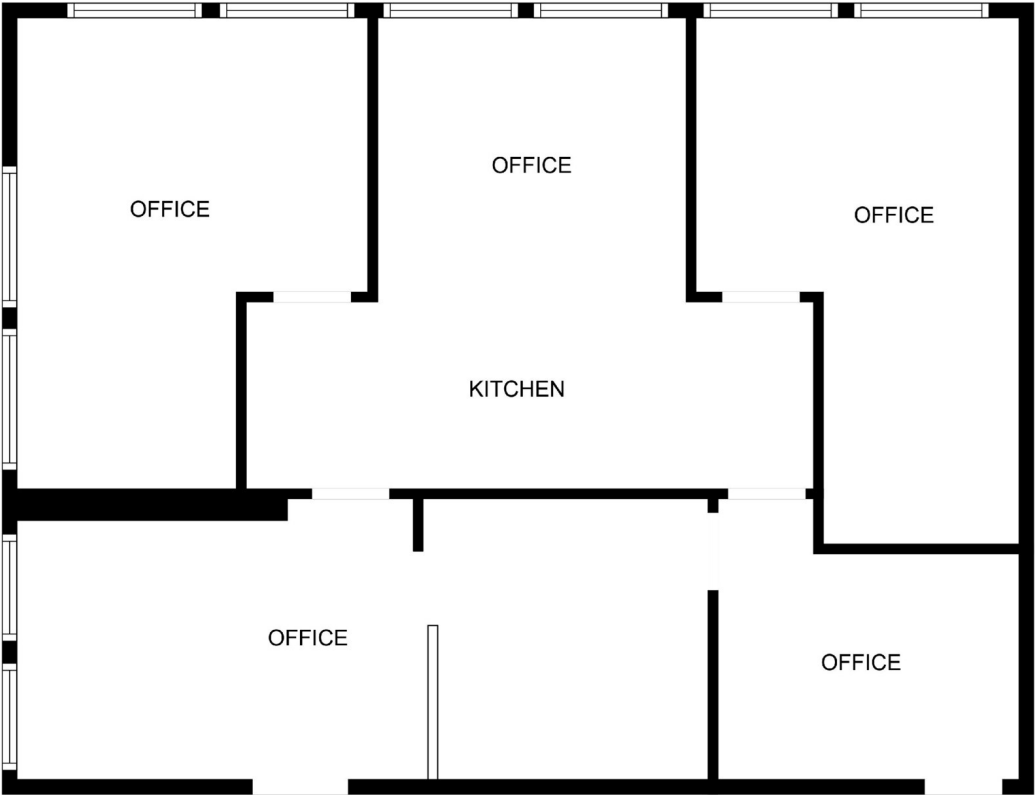
**Seth Platsman**  
503.416.0091  
seth@macadamforbes.com  
Licensed in OR

All of the information contained herein was obtained either from the owner or other parties we consider reliable. We have no reason to doubt its accuracy, however we do not guarantee it.

MACADAMFORBES.COM | 503.227.2500

FOR LEASE

14125 SW Farmington Road, Beaverton, OR 97005



Suite B Floor Plan

AVAILABLE SPACES

SUITE	SIZE (SF)	LEASE TYPE	LEASE RATE
-------	-----------	------------	------------



**Seth Platsman**  
503.416.0091  
seth@macadamforbes.com  
Licensed in OR

All of the information contained herein was obtained either from the owner or other parties we consider reliable. We have no reason to doubt its accuracy, however we do not guarantee it.



# FOR LEASE

14125 SW Farmington Road, Beaverton, OR 97005



## DEMOGRAPHICS

	1 MILE	2 MILES	3 MILES
Total population	16,501	64,143	141,762
Median age	33.6	35.0	35.3
Total households	6,782	26,251	56,913
Total persons per HH	2.4	2.4	2.5
Average HH income	\$52,787	\$64,157	\$71,070
Average house value	\$299,425	\$299,420	\$325,344

## LOCATION OVERVIEW

The subject property is in Washington County, subject to friendly business tax policies. It has close proximity to major arterials such as Highway 217 and Highway 26.



**Seth Platsman**

503.416.0091

seth@macadamforbes.com

Licensed in OR

All of the information contained herein was obtained either from the owner or other parties we consider reliable. We have no reason to doubt its accuracy, however we do not guarantee it.

MACADAMFORBES.COM | 503.227.2500