



For Sale  
**Retail Property**  
 4,416 SF | \$475,000

## Hwy 321 Retail

11827 Highway 321 S  
 Lenoir City, TN 37772

### Property Highlights

- Total of 4,416 SF structures
- Over 21,000 vehicles per day
- Highly visible Hwy 321 S location
- Wealthy Lenoir City demographic
- Great opportunity for retail storefront
- Upstairs area with ground level access
- C-1 Neighborhood Commercial Zoning
- New HVAC units, windows and doors
- Placement and condition of septic is unknown
- Loudon County - Outside city limits of Lenoir City
- 2022 property taxes - \$1,200.98

For more information

**Sam Tate, CCIM**

O: 865 777 3035 | C: 865 806 6517  
 state@koellamoore.com

**Ryan McElveen, MBA**

O: 865 531 6400 | C: 865 567 0232  
 rmcelveen@koellamoore.com

### OFFERING SUMMARY

<b>Sale Price</b>	\$475,000
<b>Lot Size</b>	0.8 Acres
<b>Zoning</b>	C-1 Commercial

### DEMOGRAPHICS

Stats	Population	Avg. HH Income
<b>3 Miles</b>	9,637	\$83,078
<b>5 Miles</b>	31,059	\$91,150
<b>10 Miles</b>	116,154	\$105,397
<b>Knox Metro</b>	1,172,792	\$77,766

For Sale

# Retail Property

4,416 SF | \$475,000



For Sale

# Retail Property

4,416 SF | \$475,000



For Sale

# Retail Property

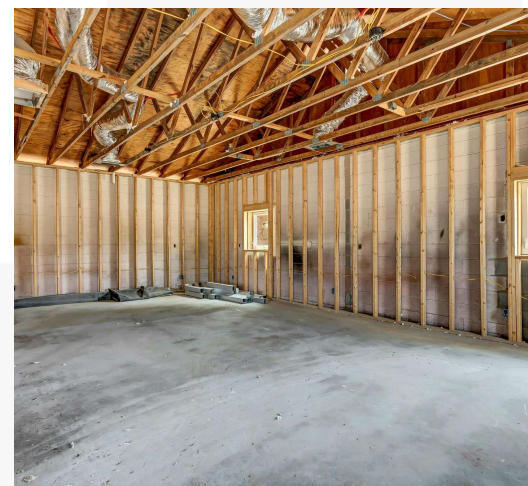
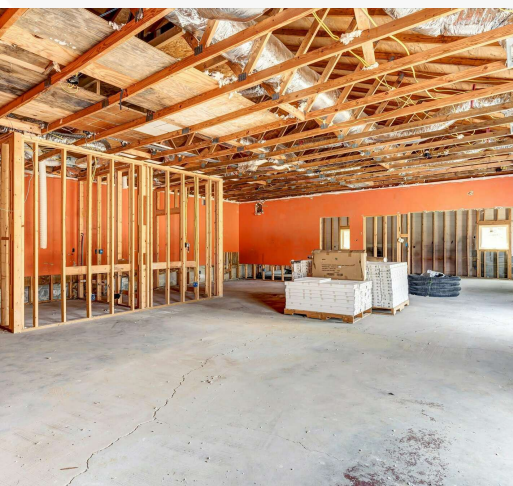
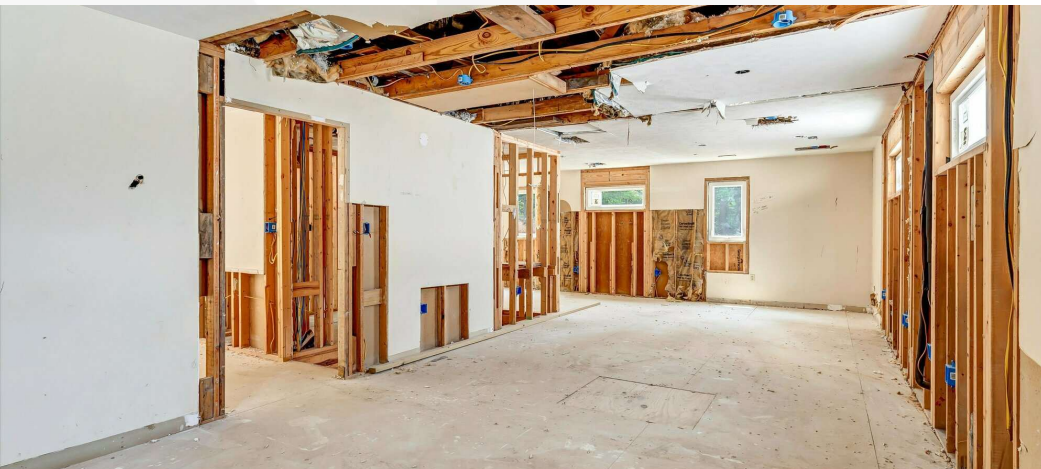
4,416 SF | \$475,000



For Sale

# Interior Photos

4,416 SF | \$475,000



For Sale

## Retail Property

4,416 SF | \$475,000

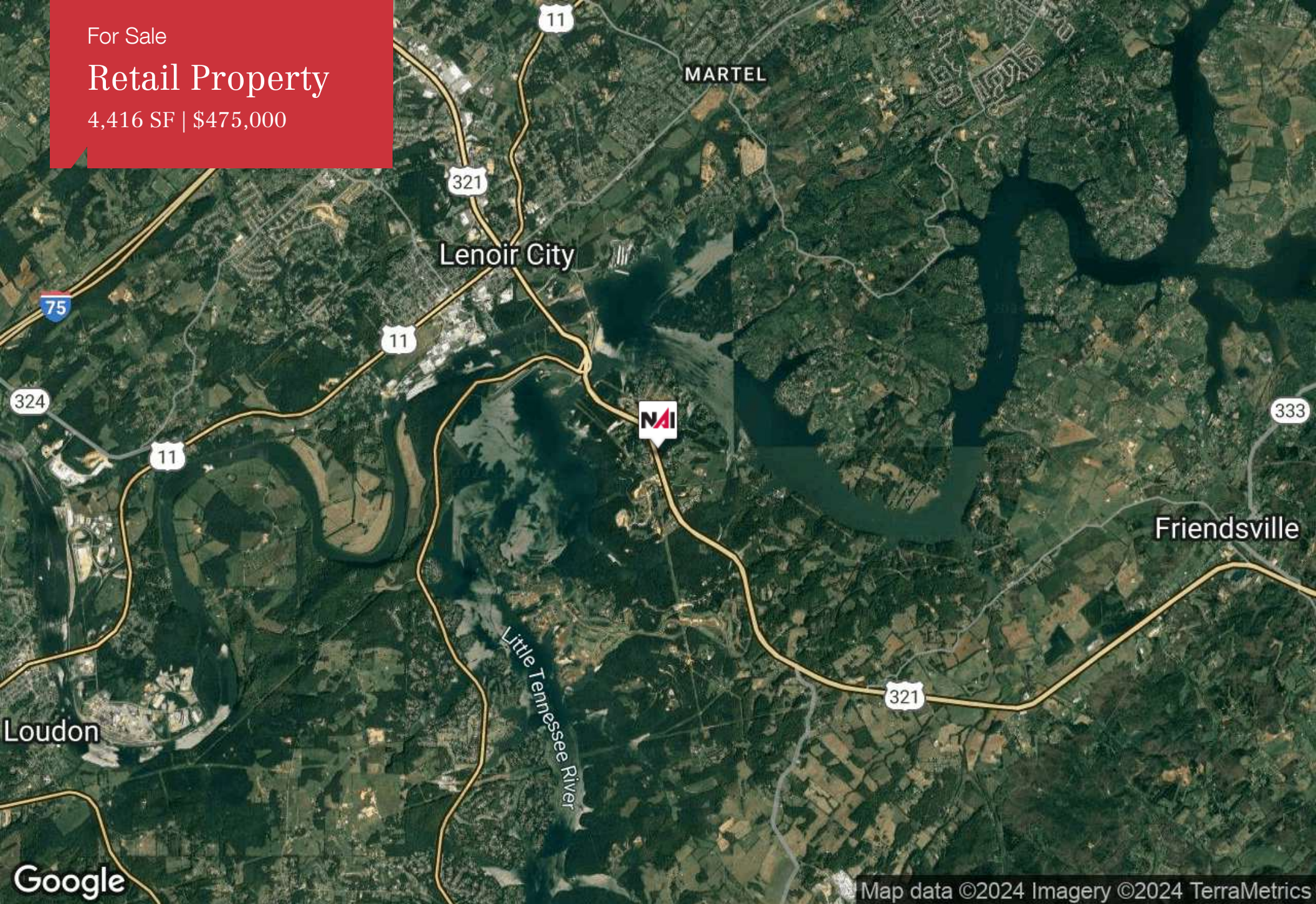


Located 3.5 miles south of E Broadway, Lenoir City

For Sale

# Retail Property

4,416 SF | \$475,000



Map data ©2024 Imagery ©2024 TerraMetrics

For Sale

## Retail Property

4,416 SF | \$475,000



### **SAM TATE, CCIM**

Senior Advisor

state@koellamoore.com

Direct: 865.777.3035 | Cell: 865.806.6517

TN #207699

### **PROFESSIONAL BACKGROUND**

Sam Tate serves as a Senior Advisor at NAI Koella | RM Moore having started his real estate career in 1980 and specializes in the sale and leasing of commercial properties. Sam is also a member of East TN CCIM.

Selected clientele includes: U.S. Department of Energy, Boeing Realty Corporation, First Tennessee Bank, Tennova, Charter Communications, Clayton Homes, The Bosch Group, Sanford, Hiwassee College, Friehtliner Corporation, Oak Ridge Associated Universities, Walgreen Company, Pitney Bowes, U.S. Postal Service, BASF, Georgia-Pacific, Nova Information Systems, SunTrust Bank, Key Safety Systems, Kindred Healthcare, Lucent Technologies, Interstate Brands Corporation, Jones Brothers, Cumberland Materials, International Paper, Mastec North America, Advance Auto, Food Lion, Robertshaw Industries, Universal Tire, The Venator Group, Air Products, Eckerd, Girl Scouts of the Southern Appalachians, Aisin World Corporation of America, Cumberland Materials, Aaron Rents, Michigan Bulb Company, and Magneco/Metrel.

### **EDUCATION**

B.S.B.A., Real Estate & Urban Development, University of Tennessee, Knoxville, 1981

CCIM Institute, Certified Commercial Investment Member

**NAI Koella | RM Moore**  
255 N Peters Road, Suite 101  
Knoxville, TN 37923  
865.531.6400

For Sale

# Retail Property

4,416 SF | \$475,000



## RYAN MCELVEEN, MBA

Advisor

rmcelveen@koellamoore.com

Direct: 865.531.6400 | Cell: 865.567.0232

### PROFESSIONAL BACKGROUND

Ryan McElveen serves as an Advisor at NAI Koella | RM Moore. With 14 years as a real estate broker, McElveen has an extensive background in sales, leasing, and creative financing of commercial properties, while predominantly focused on larger scale marketing of property.

Ryan began his career in 2008 as a licensed sole proprietor broker in California after finishing his baccalaureate at California State University, Northridge, with degrees in Real Estate and Finance. In 2010, after incorporating his brokerage and obtaining a Master's in Business Administration from Pepperdine University, Ryan had a team of 15 to 20 salespersons actively engaging clients and was focused primarily on acting as principal in seller-financed real estate transactions in California, Arizona, and Washington.

By 2015, Ryan had expanded his brokerage into Nevada and Washington and was actively pursuing transactions in each state until he joined MGR Real Estate in 2018 as a Broker Associate to better focus his talents and partner with regional commercial real estate brokers in California. In 2020, Ryan moved to Tennessee to focus on becoming a part of Celebrate Recovery at Faith Promise and to be closer to his father and family in Kingston. He later became affiliated with NAI Koella | RM Moore the following year. Previously Licensed Real Estate Broker in Nevada, Washington, and actively licensed in California (DRE #01850467).

### EDUCATION

M.B.A., Pepperdine University, 2010

B.S.B.A, Real Estate & Finance, California State University, Northridge, 2008

**NAI Koella | RM Moore**  
255 N Peters Road, Suite 101  
Knoxville, TN 37923  
865.531.6400