

# UNIT FOR LEASE

4723-4765 Capital Circle NW Tallahassee, FL 32303

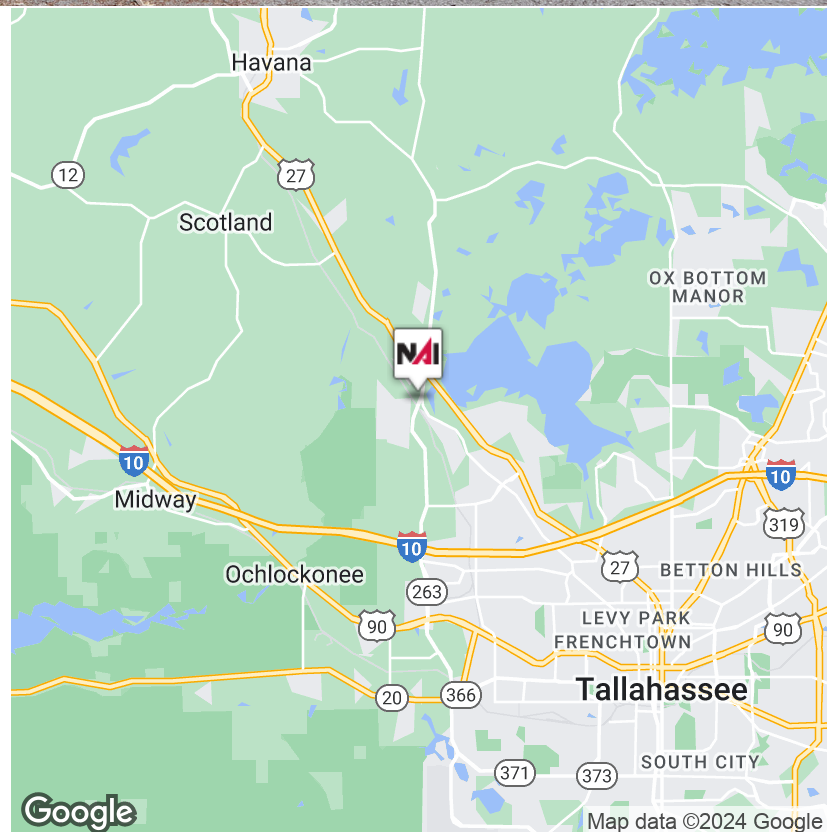
# NAI TALCOR



## Industrial | 12,500 SF

- High Eave Heights- up to 32 Feet
- Heavy Power available
- Plenty of Truck parking available for lease
- Rear Unit of 4755 features 12,500 sf of Open free span warehouse space with up to 32 ft of clearance
- Grade level loading with ability to drive Semis through the three 14 ft roll up doors

**Lease Rate: \$7.50 SF/Yr**



**Alan Richardson**  
+1 850 545 2273  
alan@talcor.com

No Warranty Or Representation, Express Or Implied, Is Made As To The Accuracy Of The Information Contained Herein, And The Same Is Submitted Subject To Errors, Omissions, Change Of Price, Rental Or Other Conditions, Prior Sale, Lease Or Financing, Or Withdrawal Without Notice, And Of Any Special Listing Conditions Imposed By Our Principals No Warranties Or Representations Are Made As To The Condition Of The Property Or Any Hazards Contained Therein Are Any To Be Implied.



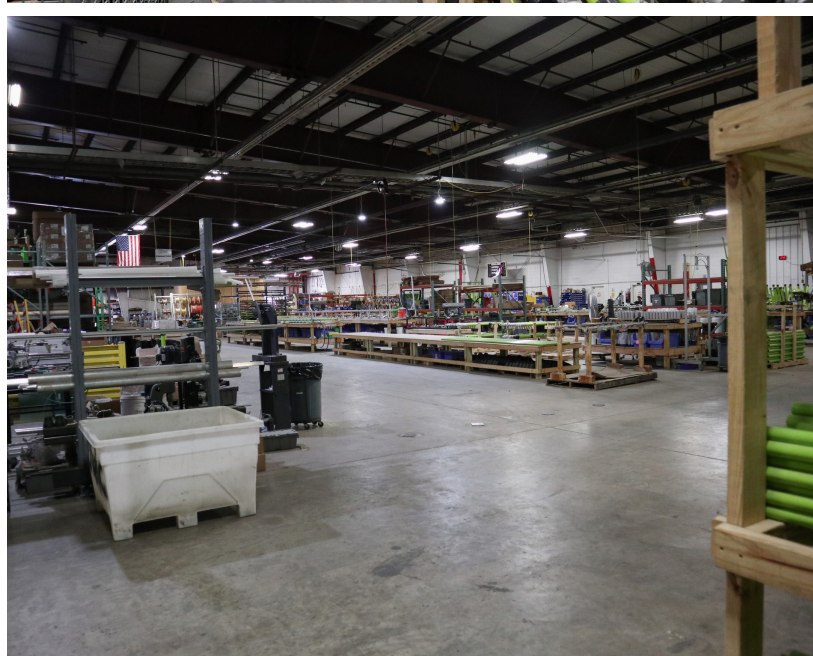
**NAI TALCOR**

1018 Thomasville Road, Suite 200A  
talcor.com



# FOR LEASE

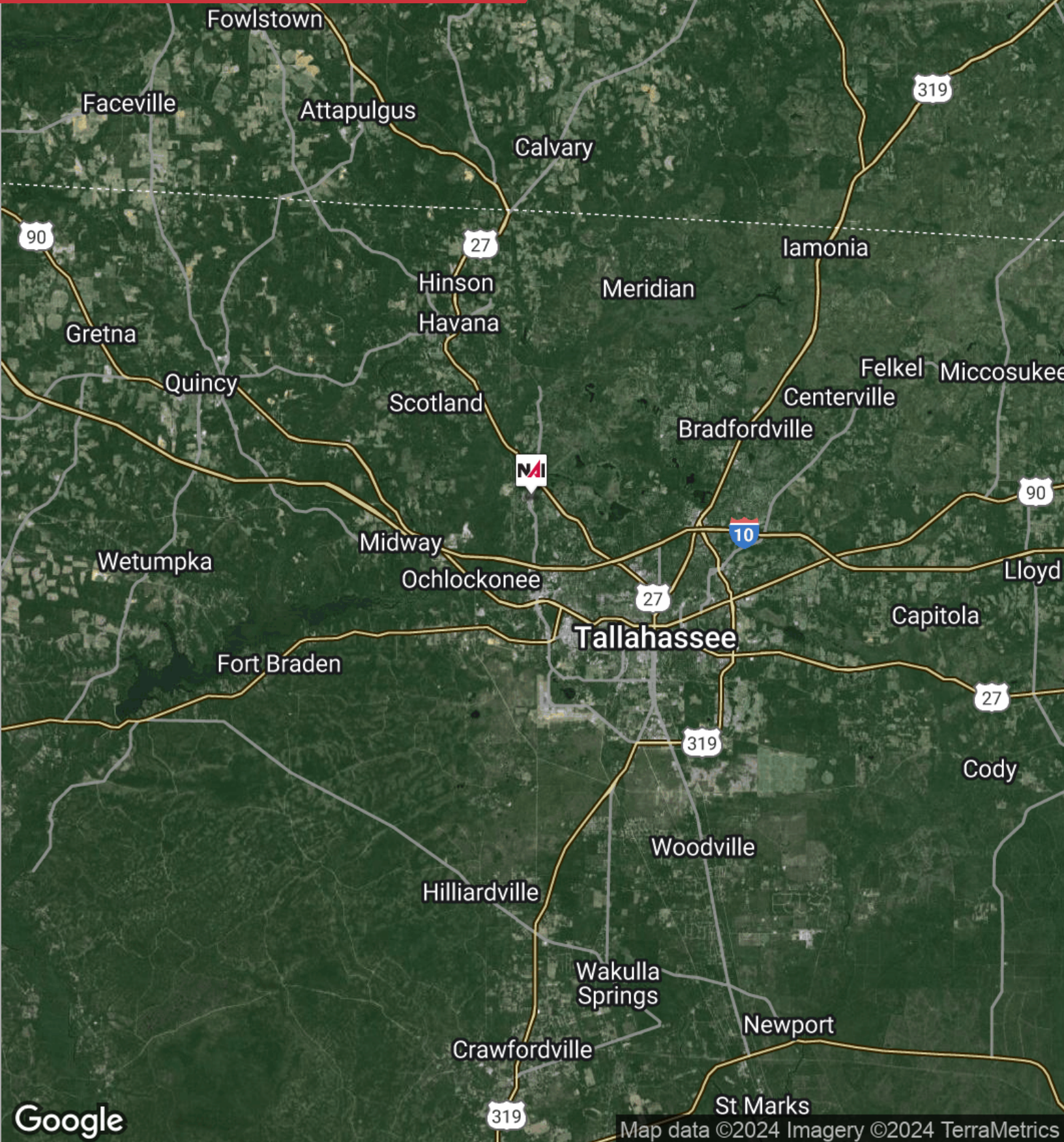
4723-4765 Capital Circle NW Tallahassee, FL 32303





# FOR LEASE

4723-4765 Capital Circle NW Tallahassee, FL 32303



✉ **Alan Richardson**  
+1 850 545 2273  
alan@talcor.com

No Warranty Or Representation, Express Or Implied, Is Made As To The Accuracy Of The Information Contained Herein, And The Same Is Submitted Subject To Errors, Omissions, Change Of Price, Rental Or Other Conditions, Prior Sale, Lease Or Financing, Or Withdrawal Without Notice, And Of Any Special Listing Conditions Imposed By Our Principals No Warranties Or Representations Are Made As To The Condition Of The Property Or Any Hazards Contained Therein Are Any To Be Implied.

Map data ©2024 Imagery ©2024 TerraMetrics

**NAITALCOR**