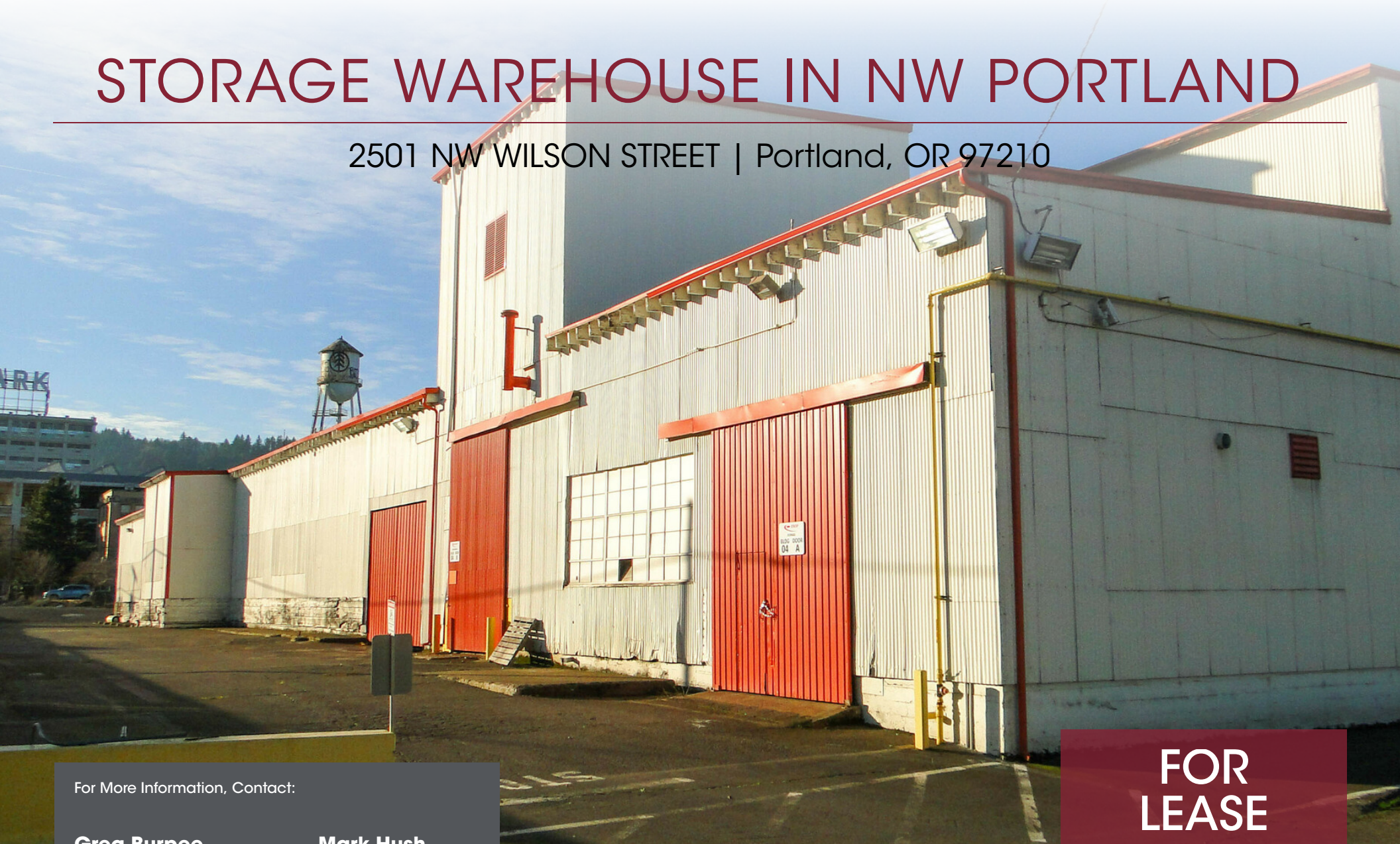


STORAGE WAREHOUSE IN NW PORTLAND

2501 NW WILSON STREET | Portland, OR 97210



For More Information, Contact:

Greg Burpee

503.972.7282

burpee@macadamforbes.com

Licensed in OR

Mark Hush

503.972.5517

Mark.Hush@nrmk.com

Licensed in OR & WA

2 Centerpointe Drive, Suite 500 | Lake Oswego, OR 97035

MACADAMFORBES.COM | 503.227.2500

All of the information contained herein was obtained either from the owner or other parties we consider reliable. We have no reason to doubt its accuracy, however we do not guarantee it.

NEWMARK

**FOR
LEASE**

**MACADAM
FORBES**
COMMERCIAL REAL ESTATE SERVICES

FOR LEASE

2501 NW Wilson Street, Portland, OR 97210



OFFERING SUMMARY

Available SF:	15,068 SF
Building SF:	30,550 SF
Lease Rate:	\$0.50 per month
Lease Type:	MG
Available:	June 2023

PROPERTY OVERVIEW

Located in the burgeoning NW Portland, this property is close to restaurants, retail shopping, breweries, and more. A clean warehouse with multiple-grade doors makes an ideal NW Portland storage solution for tenants requiring little office space. It is conveniently situated close to I-405 and Highway 30 with freeway visibility and is serviced by public transit including TriMet buses.



Greg Burpee
503.972.7282
burpee@macadamforbes.com
Licensed in OR

Mark Hush
503.972.5517
mark.hush@nmrk.com
Licensed in OR & WA

NEWMARK

All of the information contained herein was obtained either from the owner or other parties we consider reliable. We have no reason to doubt its accuracy, however we do not guarantee it.

MACADAMFORBES.COM | 503.227.2500

PROPERTY HIGHLIGHTS

- Flexible lease term
- Conveniently situated close to I-405 and Highway 30 with freeway visibility
- Serviced by public transit including TriMet buses
- Walk Score: 96
- Bike Score: 97

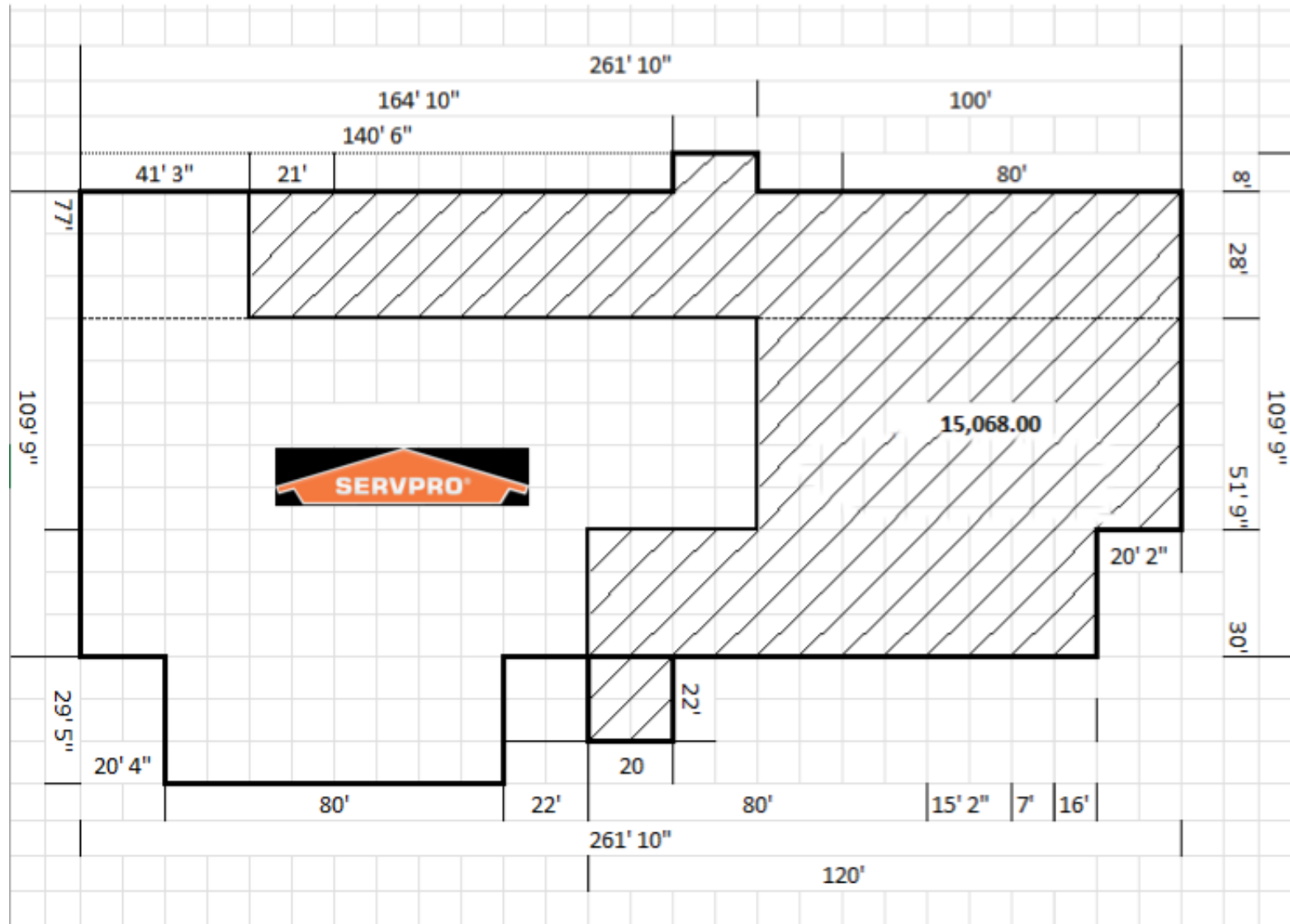
PROPERTY DETAILS

Lot Size:	1 acre
Zoning:	IH, Heavy Industrial
Loading:	Multiple grade doors
Clear Height:	12-20'
Construction:	Wood frame



FOR LEASE

2501 NW Wilson Street, Portland, OR 97210



Greg Burpee

503.972.7282

burpee@macadamforbes.com

Licensed in OR

Mark Hush

503.972.5517

mark.hush@nmrk.com

Licensed in OR & WA

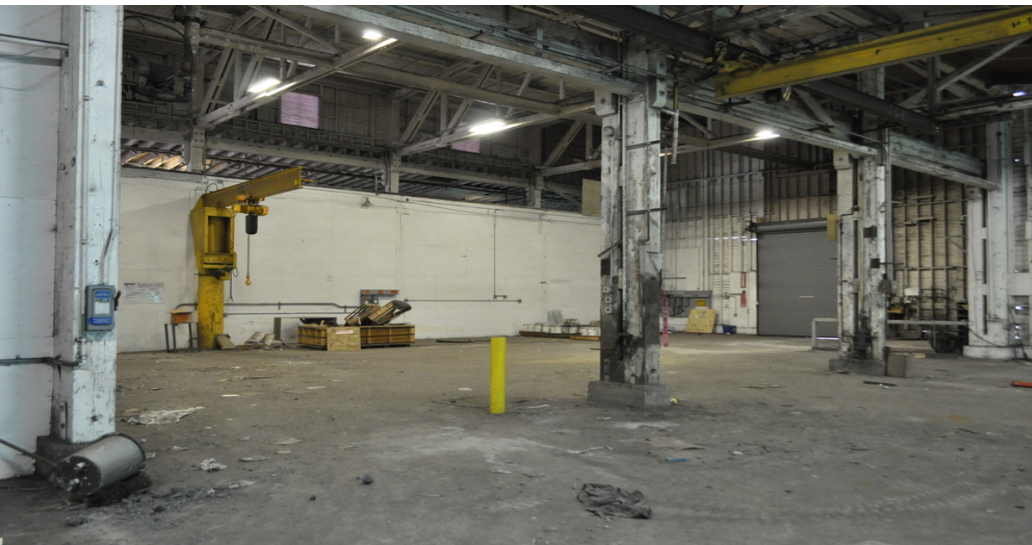
NEWMARK

All of the information contained herein was obtained either from the owner or other parties we consider reliable. We have no reason to doubt its accuracy, however we do not guarantee it.

MACADAMFORBES.COM | 503.227.2500

2501 NW Wilson Street, Portland, OR 97210

FOR LEASE



Greg Burpee

503.972.7282

burpee@macadamforbes.com

Licensed in OR

Mark Hush

503.972.5517

mark.hush@nmrk.com

Licensed in OR & WA

NEWMARK

All of the information contained herein was obtained either from the owner or other parties we consider reliable. We have no reason to doubt its accuracy, however we do not guarantee it.

MACADAMFORBES.COM | 503.227.2500

FOR LEASE

2501 NW Wilson Street, Portland, OR 97210



LOCATION OVERVIEW

This property is conveniently situated close to I-405 and Highway 30 and is serviced by public transit including TriMet buses.

Map data ©2023 Imagery ©2023 , CNES / Airbus, Maxar Technologies, Metro, Portland Oregon, Public Laboratory, State of Oregon, U.S. Geological Survey, USDA/FPAC/GEO



Greg Burpee

503.972.7282

burpee@macadamforbes.com

Licensed in OR

Mark Hush

503.972.5517

mark.hush@nmrk.com

Licensed in OR & WA

NEWMARK

All of the information contained herein was obtained either from the owner or other parties we consider reliable. We have no reason to doubt its accuracy, however we do not guarantee it.

MACADAMFORBES.COM | 503.227.2500