

# 3,191-17,522 SF GENERAL MEDICAL SPACE



## FOR LEASE



## 19900 Haggerty Road

Livonia, Michigan 48152

### Property Highlights

- 3,191-17,522 SF of Build-to-Suit, General Medical Space
- Covered Drop Offs
- Excellent Freeway Access
- Main Rd Signage
- Great Payer Mix
- Numerous Retail Amenities in the Surrounding Market
- Join Fresenius, U of M Radiology and Specialty Care Clinic

### OFFERING SUMMARY

Lease Rate:	Contact Listing Agent(s)
Available SF:	3,191-17,522 SF
Building Size:	46,734 SF

DEMOGRAPHICS	1 MILE	3 MILES	5 MILES
Total Households	2,532	29,847	75,881
Total Population	5,646	72,113	184,235
Average HH Income	\$90,285	\$94,567	\$94,557

[VIEW SPEC SUITE](#)



Commercial Real Estate Services, Worldwide.  
[www.naifarbman.com](http://www.naifarbman.com)

**John Harwood**  
Vice President | 734.755.0488  
[harwood@farbman.com](mailto:harwood@farbman.com)

**Jeff Cavazos**  
Senior Vice President | 248.613.6457  
[jcavazos@farbman.com](mailto:jcavazos@farbman.com)

**Kristi Lawton**  
Vice President | 248.351.4358  
[lawton@farbman.com](mailto:lawton@farbman.com)



PHYSICIANS REALTY TRUST

NO WARRANTY, EXPRESS OR IMPLIED, IS MADE AS TO THE ACCURACY OF THE INFORMATION CONTAINED HEREIN. THIS INFORMATION IS SUBMITTED SUBJECT TO ERRORS, OMISSIONS, CHANGE OF PRICE, RENTAL OR OTHER CONDITIONS, WITHDRAWAL WITHOUT NOTICE, AND IS SUBJECT TO ANY SPECIAL LISTING CONDITIONS IMPOSED BY OUR PRINCIPALS, COOPERATING BROKERS, BUYERS, TENANTS AND OTHER PARTIES WHO RECEIVE THIS DOCUMENT SHOULD NOT RELY ON IT, BUT SHOULD USE IT AS A STARTING POINT OF ANALYSIS, AND SHOULD INDEPENDENTLY CONFIRM THE ACCURACY OF THE INFORMATION CONTAINED HEREIN THROUGH A DUE DILIGENCE REVIEW OF THE BOOKS, RECORDS, FILES AND DOCUMENTS THAT CONSTITUTE RELIABLE SOURCES OF THE INFORMATION DESCRIBED HEREIN. LOGOS ARE FOR IDENTIFICATION PURPOSES ONLY AND MAY BE TRADEMARKS OF THEIR RESPECTIVE COMPANIES. NAI Farbman, INC. CA BRE LIC. #01990696.



# 3,191-17,522 SF GENERAL MEDICAL SPACE



## FOR LEASE



**NAI Farbman**

Commercial Real Estate Services, Worldwide.  
[www.naifarbman.com](http://www.naifarbman.com)

**John Harwood**  
Vice President | 734.755.0488  
[harwood@farbman.com](mailto:harwood@farbman.com)

**Jeff Cavazos**  
Senior Vice President | 248.613.6457  
[jcavazos@farbman.com](mailto:jcavazos@farbman.com)

**Kristi Lawton**  
Vice President | 248.798.9828  
[lawton@farbman.com](mailto:lawton@farbman.com)

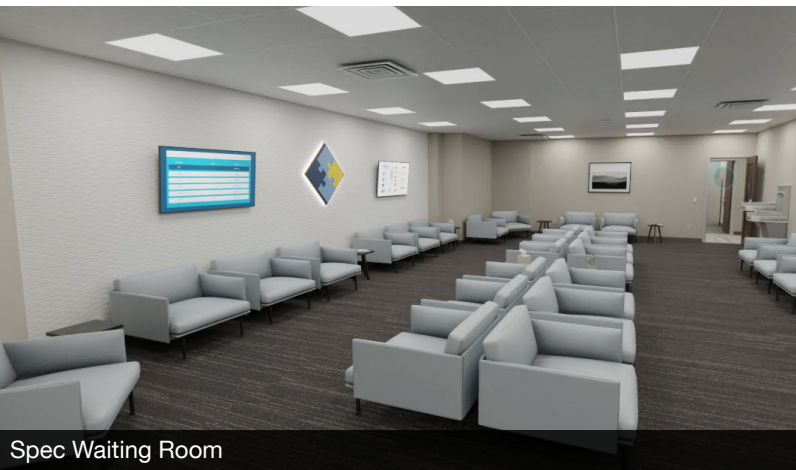
NO WARRANTY, EXPRESS OR IMPLIED, IS MADE AS TO THE ACCURACY OF THE INFORMATION CONTAINED HEREIN. THIS INFORMATION IS SUBMITTED SUBJECT TO ERRORS, OMISSIONS, CHANGE OF PRICE, RENTAL OR OTHER CONDITIONS, WITHDRAWAL WITHOUT NOTICE, AND IS SUBJECT TO ANY SPECIAL LISTING CONDITIONS IMPOSED BY OUR PRINCIPALS. COOPERATING BROKERS, BUYERS, TENANTS AND OTHER PARTIES WHO RECEIVE THIS DOCUMENT SHOULD NOT RELY ON IT, BUT SHOULD USE IT AS A STARTING POINT OF ANALYSIS, AND SHOULD INDEPENDENTLY CONFIRM THE ACCURACY OF THE INFORMATION CONTAINED HEREIN THROUGH A DUE DILIGENCE REVIEW OF THE BOOKS, RECORDS, FILES AND DOCUMENTS THAT CONSTITUTE RELIABLE SOURCES OF THE INFORMATION DESCRIBED HEREIN. LOGOS ARE FOR IDENTIFICATION PURPOSES ONLY AND MAY BE TRADEMARKS OF THEIR RESPECTIVE COMPANIES. NAI Farbman, INC. CA BRE LIC. #01990696.



# 3,191-17,522 SF GENERAL MEDICAL SPACE



## FOR LEASE



Spec Waiting Room



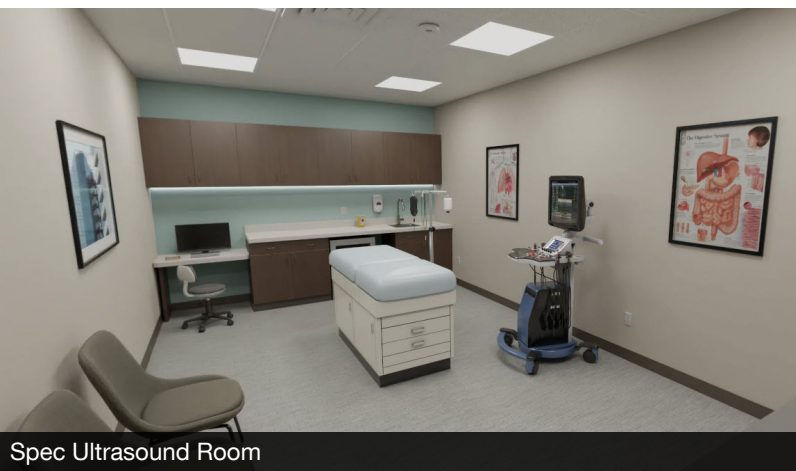
Spec Laboratory Space



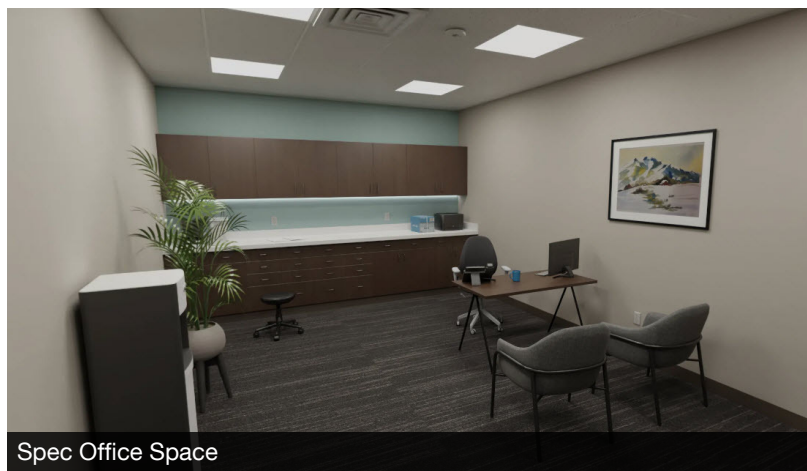
Spec Nurses Station



Spec Exam Room



Spec Ultrasound Room



Spec Office Space

**NAI Farbman**

Commercial Real Estate Services, Worldwide.  
www.naifarbman.com

**John Harwood**  
Vice President | 734.755.0488  
harwood@farbman.com

**Jeff Cavazos**  
Senior Vice President | 248.613.6457  
jcavazos@farbman.com

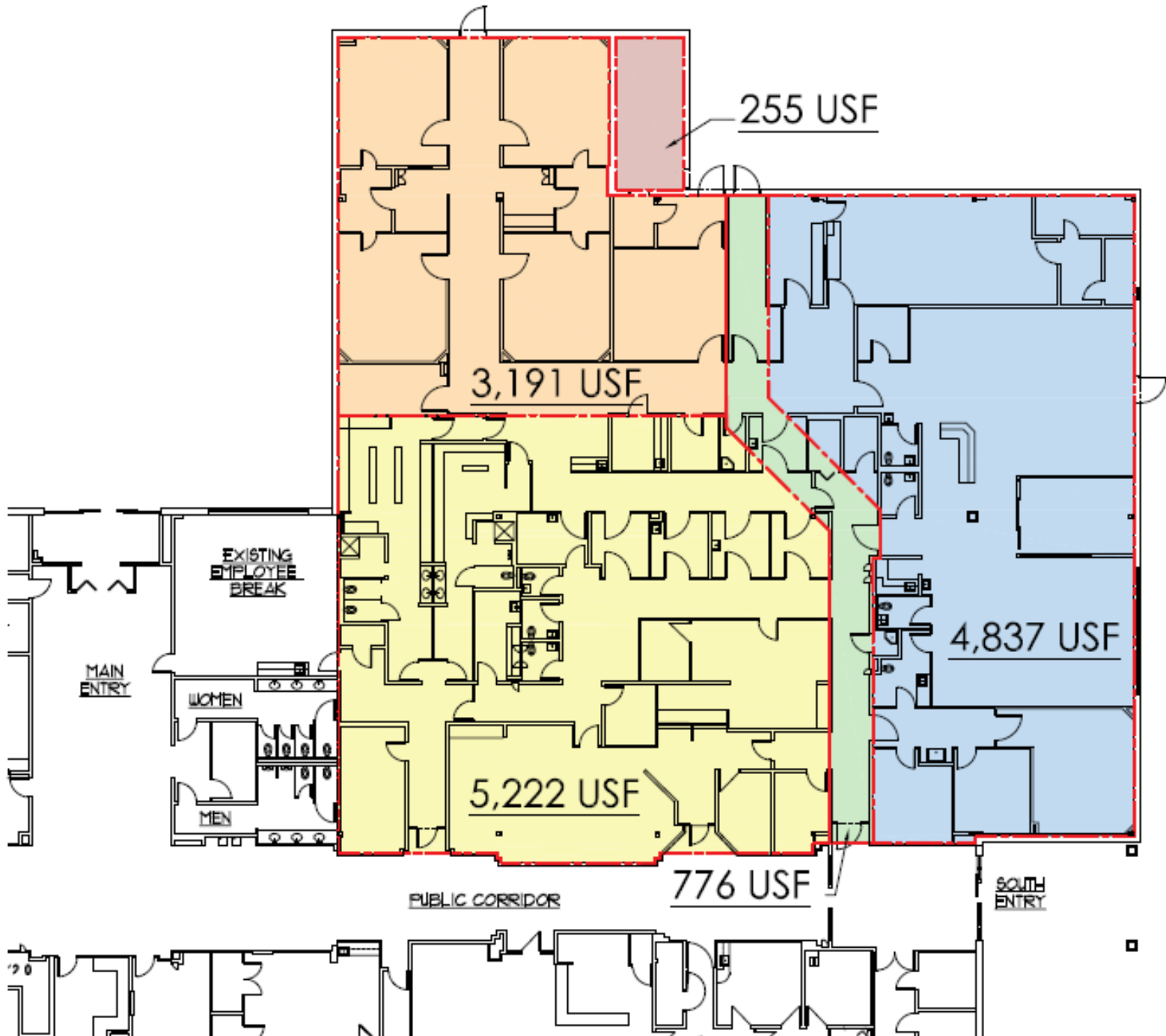
**Kristi Lawton**  
Vice President | 248.798.9828  
lawton@farbman.com

NO WARRANTY, EXPRESS OR IMPLIED, IS MADE AS TO THE ACCURACY OF THE INFORMATION CONTAINED HEREIN. THIS INFORMATION IS SUBMITTED SUBJECT TO ERRORS, OMISSIONS, CHANGE OF PRICE, RENTAL OR OTHER CONDITIONS, WITHDRAWAL WITHOUT NOTICE, AND IS SUBJECT TO ANY SPECIAL LISTING CONDITIONS IMPOSED BY OUR PRINCIPALS. COOPERATING BROKERS, BUYERS, TENANTS AND OTHER PARTIES WHO RECEIVE THIS DOCUMENT SHOULD NOT RELY ON IT, BUT SHOULD USE IT AS A STARTING POINT OF ANALYSIS, AND SHOULD INDEPENDENTLY CONFIRM THE ACCURACY OF THE INFORMATION CONTAINED HEREIN THROUGH A DUE DILIGENCE REVIEW OF THE BOOKS, RECORDS, FILES AND DOCUMENTS THAT CONSTITUTE RELIABLE SOURCES OF THE INFORMATION DESCRIBED HEREIN. LOGOS ARE FOR IDENTIFICATION PURPOSES ONLY AND MAY BE TRADEMARKS OF THEIR RESPECTIVE COMPANIES. NAI Farbman, INC. CA BRE LIC. #01990696.

# 3,191-17,522 SF GENERAL MEDICAL SPACE



## FOR LEASE



Commercial Real Estate Services, Worldwide.

[www.naifarbman.com](http://www.naifarbman.com)

**John Harwood**

Vice President | 734.755.0488  
[harwood@farbman.com](mailto:harwood@farbman.com)

**Jeff Cavazos**

Senior Vice President | 248.613.6457  
[jcavazos@farbman.com](mailto:jcavazos@farbman.com)

**Kristi Lawton**

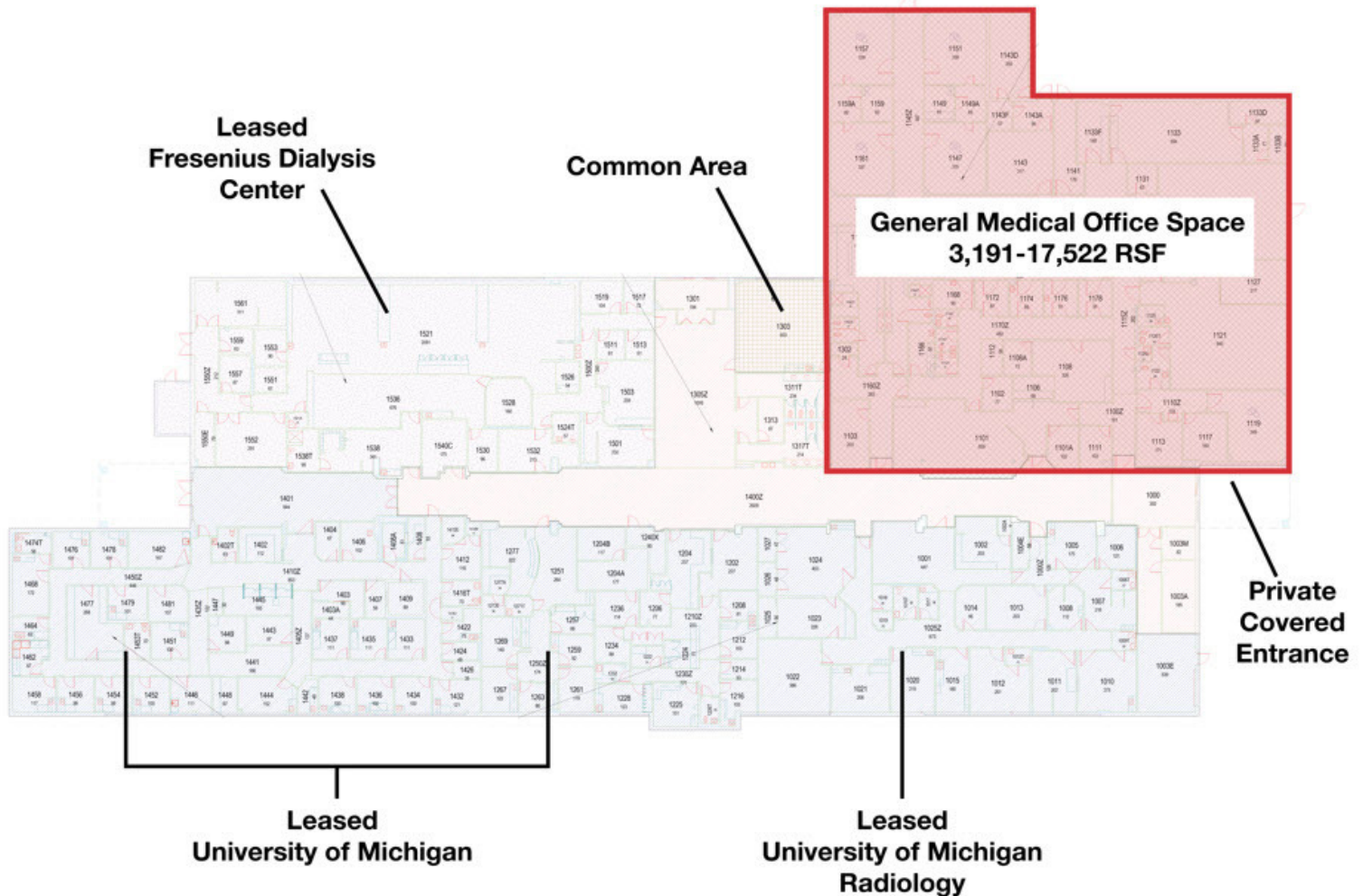
Vice President | 248.798.9828  
[lawton@farbman.com](mailto:lawton@farbman.com)

NO WARRANTY, EXPRESS OR IMPLIED, IS MADE AS TO THE ACCURACY OF THE INFORMATION CONTAINED HEREIN. THIS INFORMATION IS SUBMITTED SUBJECT TO ERRORS, OMISSIONS, CHANGE OF PRICE, RENTAL OR OTHER CONDITIONS, WITHDRAWAL WITHOUT NOTICE, AND IS SUBJECT TO ANY SPECIAL LISTING CONDITIONS IMPOSED BY OUR PRINCIPALS. COOPERATING BROKERS, BUYERS, TENANTS AND OTHER PARTIES WHO RECEIVE THIS DOCUMENT SHOULD NOT RELY ON IT, BUT SHOULD USE IT AS A STARTING POINT OF ANALYSIS, AND SHOULD INDEPENDENTLY CONFIRM THE ACCURACY OF THE INFORMATION CONTAINED HEREIN THROUGH A DUE DILIGENCE REVIEW OF THE BOOKS, RECORDS, FILES AND DOCUMENTS THAT CONSTITUTE RELIABLE SOURCES OF THE INFORMATION DESCRIBED HEREIN. LOGOS ARE FOR IDENTIFICATION PURPOSES ONLY AND MAY BE TRADEMARKS OF THEIR RESPECTIVE COMPANIES. NAI Farbman, INC. CA BRE LIC. #01990696.

# 3,191-17,522 SF GENERAL MEDICAL SPACE



## FOR LEASE

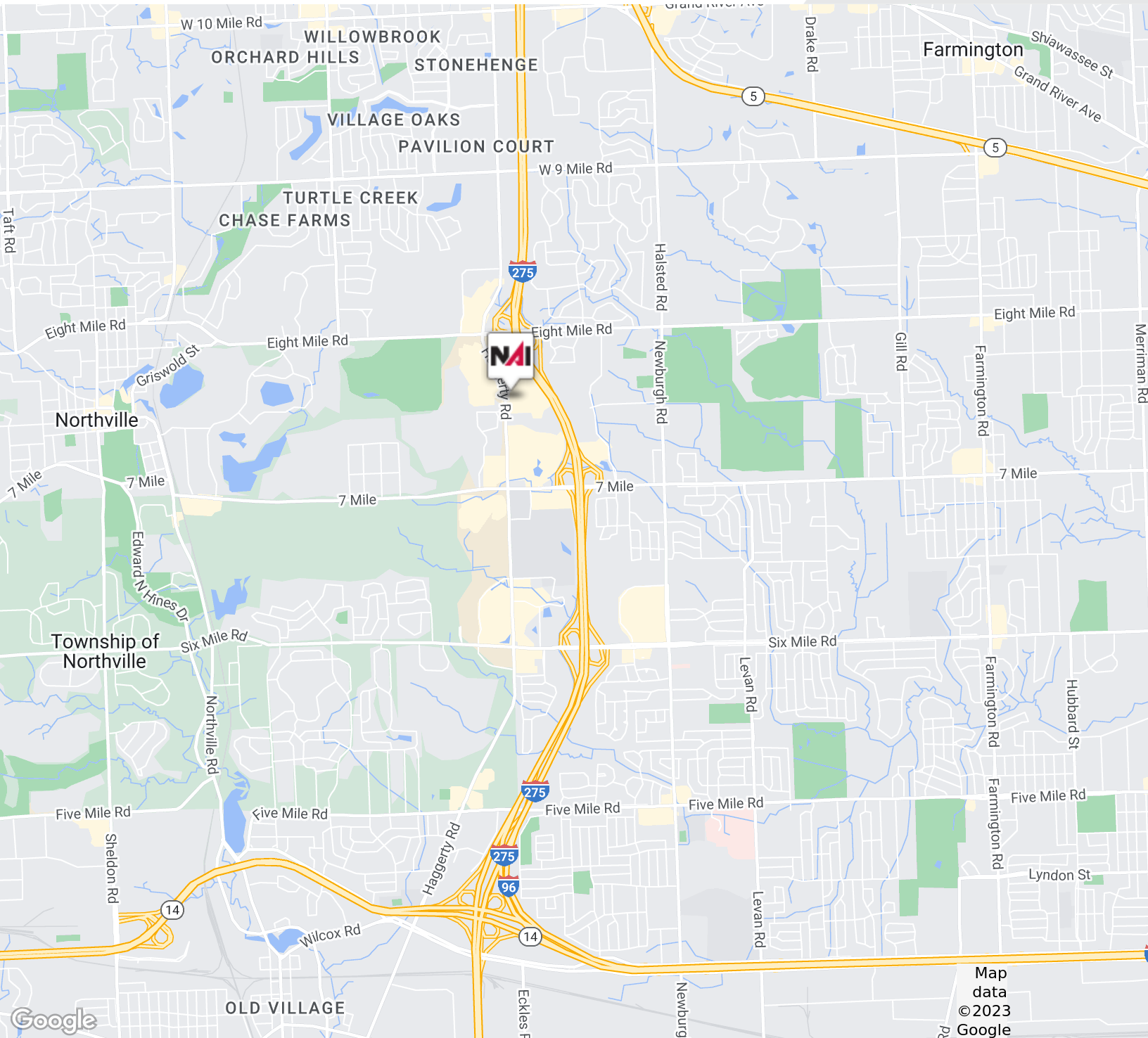




# 3,191-17,522 SF GENERAL MEDICAL SPACE



## FOR LEASE



Commercial Real Estate Services, Worldwide.

[www.naifarberman.com](http://www.naifarberman.com)

**John Harwood**  
Vice President | 734.755.0488  
[harwood@farberman.com](mailto:harwood@farberman.com)

**Jeff Cavazos**  
Senior Vice President | 248.613.6457  
[jcavazos@farberman.com](mailto:jcavazos@farberman.com)

**Kristi Lawton**  
Vice President | 248.798.9828  
[lawton@farberman.com](mailto:lawton@farberman.com)

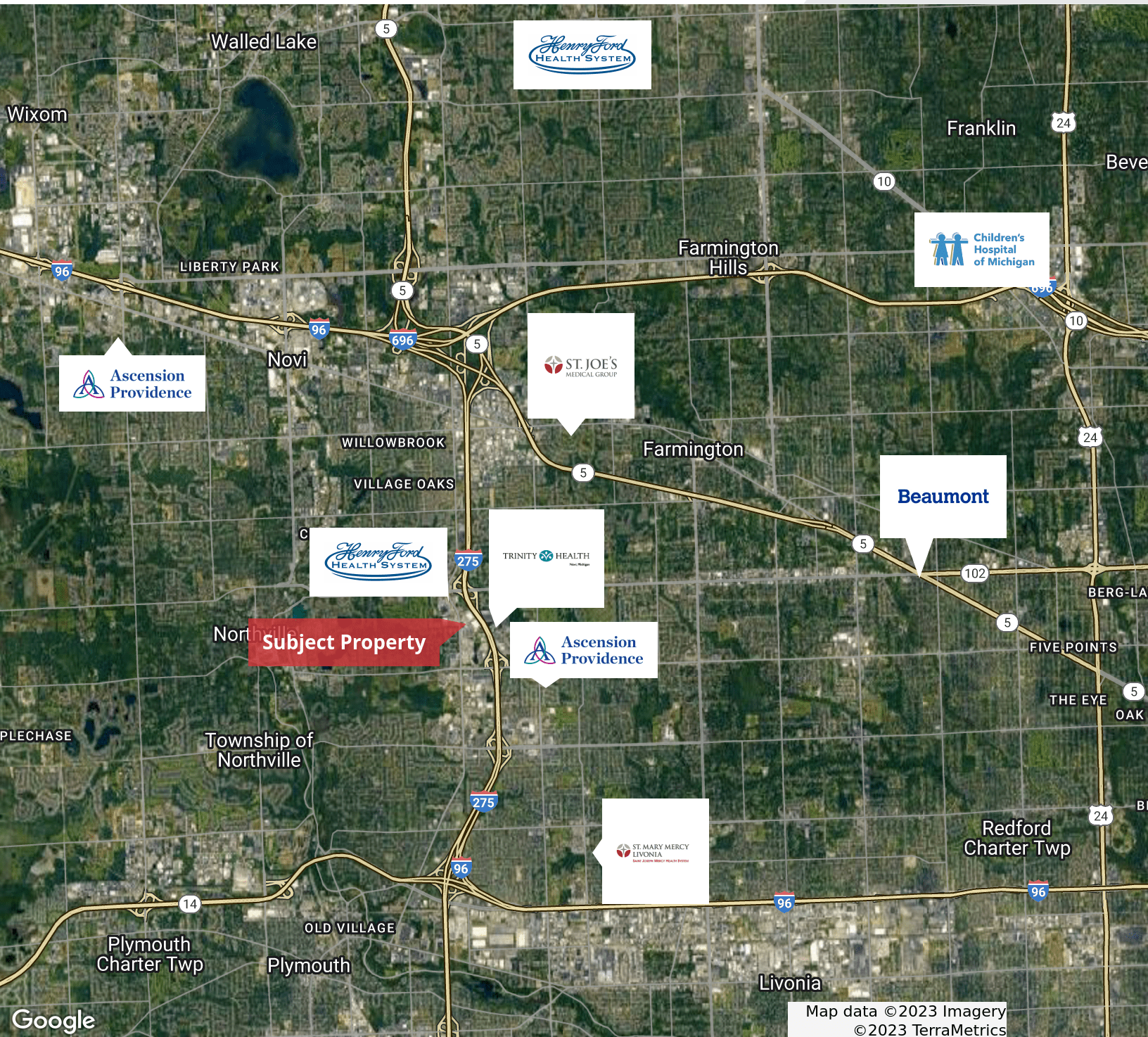
NO WARRANTY, EXPRESS OR IMPLIED, IS MADE AS TO THE ACCURACY OF THE INFORMATION CONTAINED HEREIN. THIS INFORMATION IS SUBMITTED SUBJECT TO ERRORS, OMISSIONS, CHANGE OF PRICE, RENTAL OR OTHER CONDITIONS, WITHDRAWAL WITHOUT NOTICE, AND IS SUBJECT TO ANY SPECIAL LISTING CONDITIONS IMPOSED BY OUR PRINCIPALS. COOPERATING BROKERS, BUYERS, TENANTS AND OTHER PARTIES WHO RECEIVE THIS DOCUMENT SHOULD NOT RELY ON IT, BUT SHOULD USE IT AS A STARTING POINT OF ANALYSIS, AND SHOULD INDEPENDENTLY CONFIRM THE ACCURACY OF THE INFORMATION CONTAINED HEREIN THROUGH A DUE DILIGENCE REVIEW OF THE BOOKS, RECORDS, FILES AND DOCUMENTS THAT CONSTITUTE RELIABLE SOURCES OF THE INFORMATION DESCRIBED HEREIN. LOGOS ARE FOR IDENTIFICATION PURPOSES ONLY AND MAY BE TRADEMARKS OF THEIR RESPECTIVE COMPANIES. NAI Farberman, INC. CA BRE LIC. #01990696.



# 3,191-17,522 SF GENERAL MEDICAL SPACE



## FOR LEASE



Map data ©2023 Imagery  
©2023 TerraMetrics



Commercial Real Estate Services, Worldwide.

[www.naifarberman.com](http://www.naifarberman.com)

**John Harwood**  
Vice President | 734.755.0488  
[harwood@farberman.com](mailto:harwood@farberman.com)

**Jeff Cavazos**  
Senior Vice President | 248.613.6457  
[jcavazos@farberman.com](mailto:jcavazos@farberman.com)

**Kristi Lawton**  
Vice President | 248.798.9828  
[lawton@farberman.com](mailto:lawton@farberman.com)

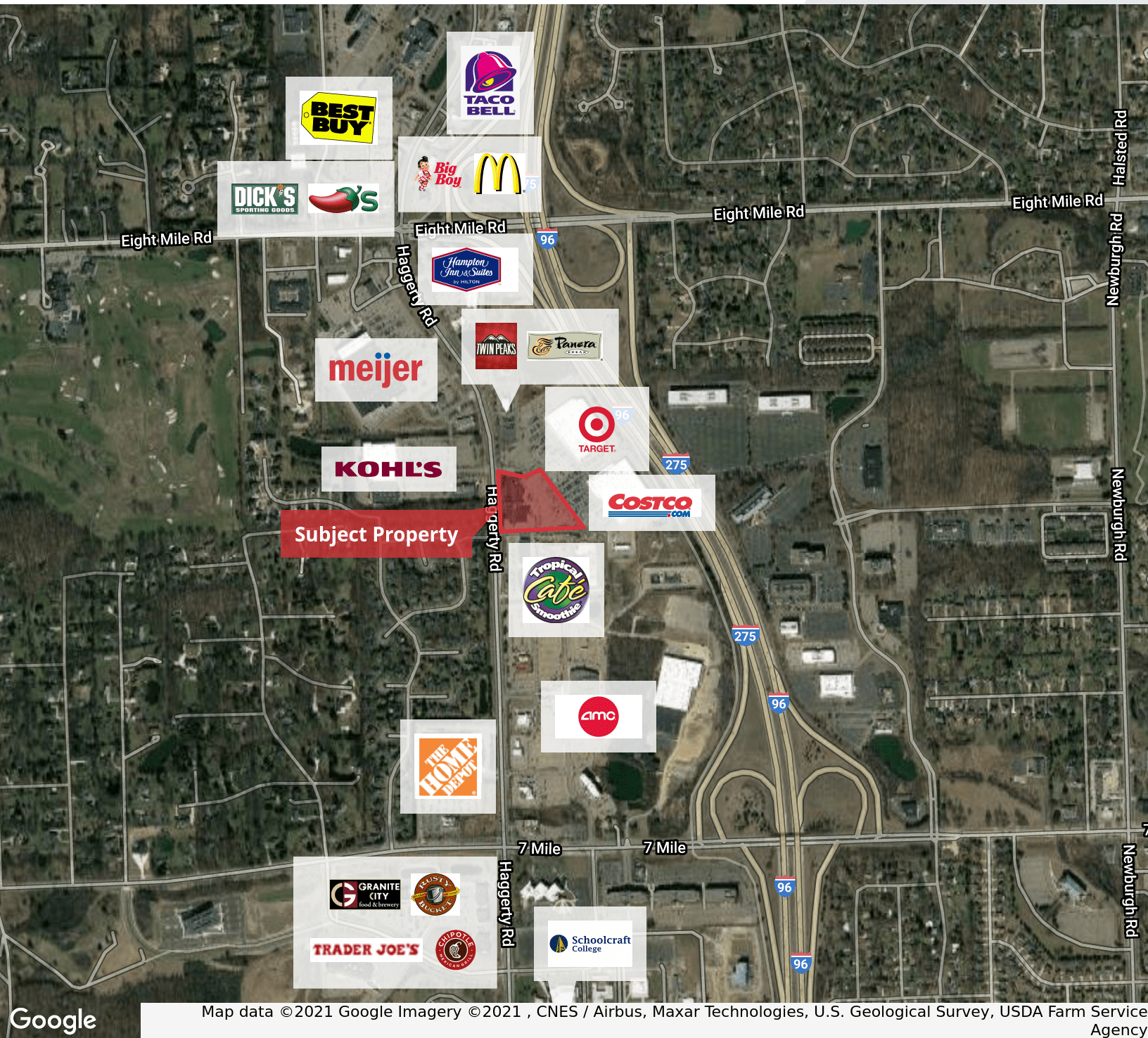
NO WARRANTY, EXPRESS OR IMPLIED, IS MADE AS TO THE ACCURACY OF THE INFORMATION CONTAINED HEREIN. THIS INFORMATION IS SUBMITTED SUBJECT TO ERRORS, OMISSIONS, CHANGE OF PRICE, RENTAL OR OTHER CONDITIONS, WITHDRAWAL WITHOUT NOTICE, AND IS SUBJECT TO ANY SPECIAL LISTING CONDITIONS IMPOSED BY OUR PRINCIPALS. COOPERATING BROKERS, BUYERS, TENANTS AND OTHER PARTIES WHO RECEIVE THIS DOCUMENT SHOULD NOT RELY ON IT, BUT SHOULD USE IT AS A STARTING POINT OF ANALYSIS, AND SHOULD INDEPENDENTLY CONFIRM THE ACCURACY OF THE INFORMATION CONTAINED HEREIN THROUGH A DUE DILIGENCE REVIEW OF THE BOOKS, RECORDS, FILES AND DOCUMENTS THAT CONSTITUTE RELIABLE SOURCES OF THE INFORMATION DESCRIBED HEREIN. LOGOS ARE FOR IDENTIFICATION PURPOSES ONLY AND MAY BE TRADEMARKS OF THEIR RESPECTIVE COMPANIES. NAI Farberman, INC. CA BRE LIC. #01990696.



# 3,191-17,522 SF GENERAL MEDICAL SPACE



## FOR LEASE



Map data ©2021 Google Imagery ©2021, CNES / Airbus, Maxar Technologies, U.S. Geological Survey, USDA Farm Service Agency

**NAI Farbman**

Commercial Real Estate Services, Worldwide.

[www.naifarbman.com](http://www.naifarbman.com)

**John Harwood**  
Vice President | 734.755.0488  
[harwood@farbman.com](mailto:harwood@farbman.com)

**Jeff Cavazos**  
Senior Vice President | 248.613.6457  
[jcavazos@farbman.com](mailto:jcavazos@farbman.com)

**Kristi Lawton**  
Vice President | 248.351.4358  
[lawton@farbman.com](mailto:lawton@farbman.com)



PHYSICIANS REALTY TRUST

NO WARRANTY, EXPRESS OR IMPLIED, IS MADE AS TO THE ACCURACY OF THE INFORMATION CONTAINED HEREIN. THIS INFORMATION IS SUBMITTED SUBJECT TO ERRORS, OMISSIONS, CHANGE OF PRICE, RENTAL OR OTHER CONDITIONS, WITHDRAWAL WITHOUT NOTICE, AND IS SUBJECT TO ANY SPECIAL LISTING CONDITIONS IMPOSED BY OUR PRINCIPALS. COOPERATING BROKERS, BUYERS, TENANTS AND OTHER PARTIES WHO RECEIVE THIS DOCUMENT SHOULD NOT RELY ON IT, BUT SHOULD USE IT AS A STARTING POINT OF ANALYSIS, AND SHOULD INDEPENDENTLY CONFIRM THE ACCURACY OF THE INFORMATION CONTAINED HEREIN THROUGH A DUE DILIGENCE REVIEW OF THE BOOKS, RECORDS, FILES AND DOCUMENTS THAT CONSTITUTE RELIABLE SOURCES OF THE INFORMATION DESCRIBED HEREIN. LOGOS ARE FOR IDENTIFICATION PURPOSES ONLY AND MAY BE TRADEMARKS OF THEIR RESPECTIVE COMPANIES. NAI CAPITAL, INC. CA BRE LIC. #01990696.