

# FOR LEASE

Commerce Center Boulevard & Market Court Fairborn, OH 45324



Map data ©2023 Imagery ©2023 , CNES / Airbus, Maxar Technologies, State of Ohio / OSIP, U.S. Geological Survey, USDA/FPAC/GEO

## NAI Bergman

### Land | 1.543 Acres

- Corner Lot
- Close to I-675
- Dense Retail Surrounding Site

Demographics	1 Mile	2 Miles	3 Miles
Total Population:	3,579	16,518	34,376
Average HH Income:	\$84,557	\$74,672	\$71,214

No Warranty Or Representation, Express Or Implied, Is Made As To The Accuracy Of The Information Contained Herein, And The Same Is Submitted Subject To Errors, Omissions, Change Of Price, Rental Or Other Conditions, Prior Sale, Lease Or Financing, Or Withdrawal Without Notice, And Of Any Special Listing Conditions Imposed By Our Principals No Warranties Or Representations Are Made As To The Condition Of The Property Or Any Hazards Contained Therein Are Any To Be Implied.



Map data ©2024 Google

✉ **Robert Zavakos**  
+1 937 603 3300  
rzavakos@bergman-group.com



# FOR LEASE

Commerce Center Boulevard & Market Court Fairborn, OH 45324



No Warranty Or Representation, Express Or Implied, Is Made As To The Accuracy Of The Information Contained Herein, And The Same Is Submitted Subject To Errors, Omissions, Change Of Price, Rental Or Other Conditions, Prior Sale, Lease Or Financing, Or Withdrawal Without Notice, And Of Any Special Listing Conditions Imposed By Our Principals No Warranties Or Representations Are Made As To The Condition Of The Property Or Any Hazards Contained Therein Are Any To Be Implied.



**Robert Zavakos**

+1 937 603 3300

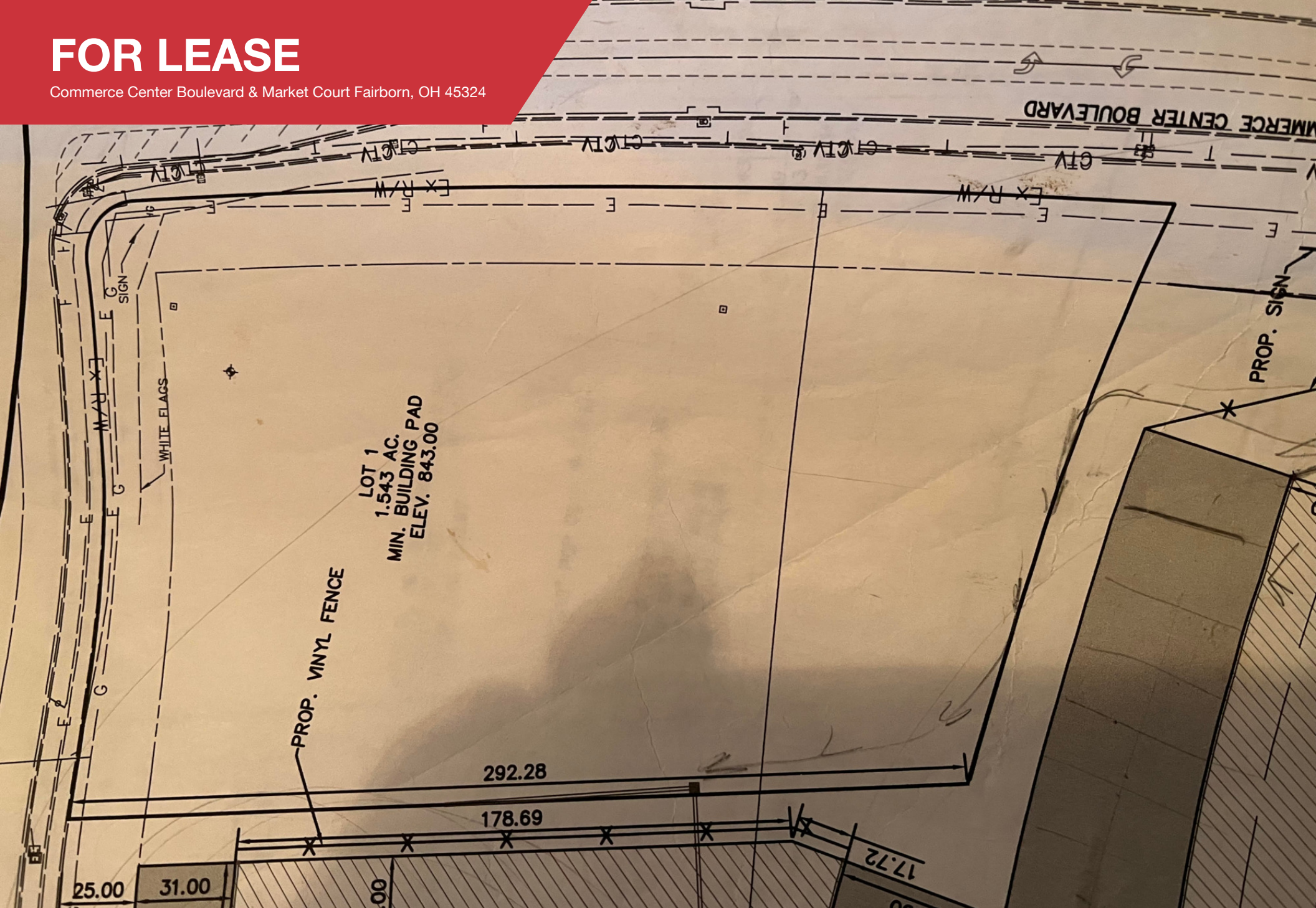
[rlzavakos@bergman-group.com](mailto:rlzavakos@bergman-group.com)

**NABergman**



# FOR LEASE

Commerce Center Boulevard & Market Court Fairborn, OH 45324



No Warranty Or Representation, Express Or Implied, Is Made As To The Accuracy Of The Information Contained Herein, And The Same Is Submitted Subject To Errors, Omissions, Change Of Price, Rental Or Other Conditions, Prior Sale, Lease Or Financing, Or Withdrawal Without Notice, And Of Any Special Listing Conditions Imposed By Our Principals No Warranties Or Representations Are Made As To The Condition Of The Property Or Any Hazards Contained Therein Are Any To Be Implied.



**Robert Zavakos**

+1 937 603 3300

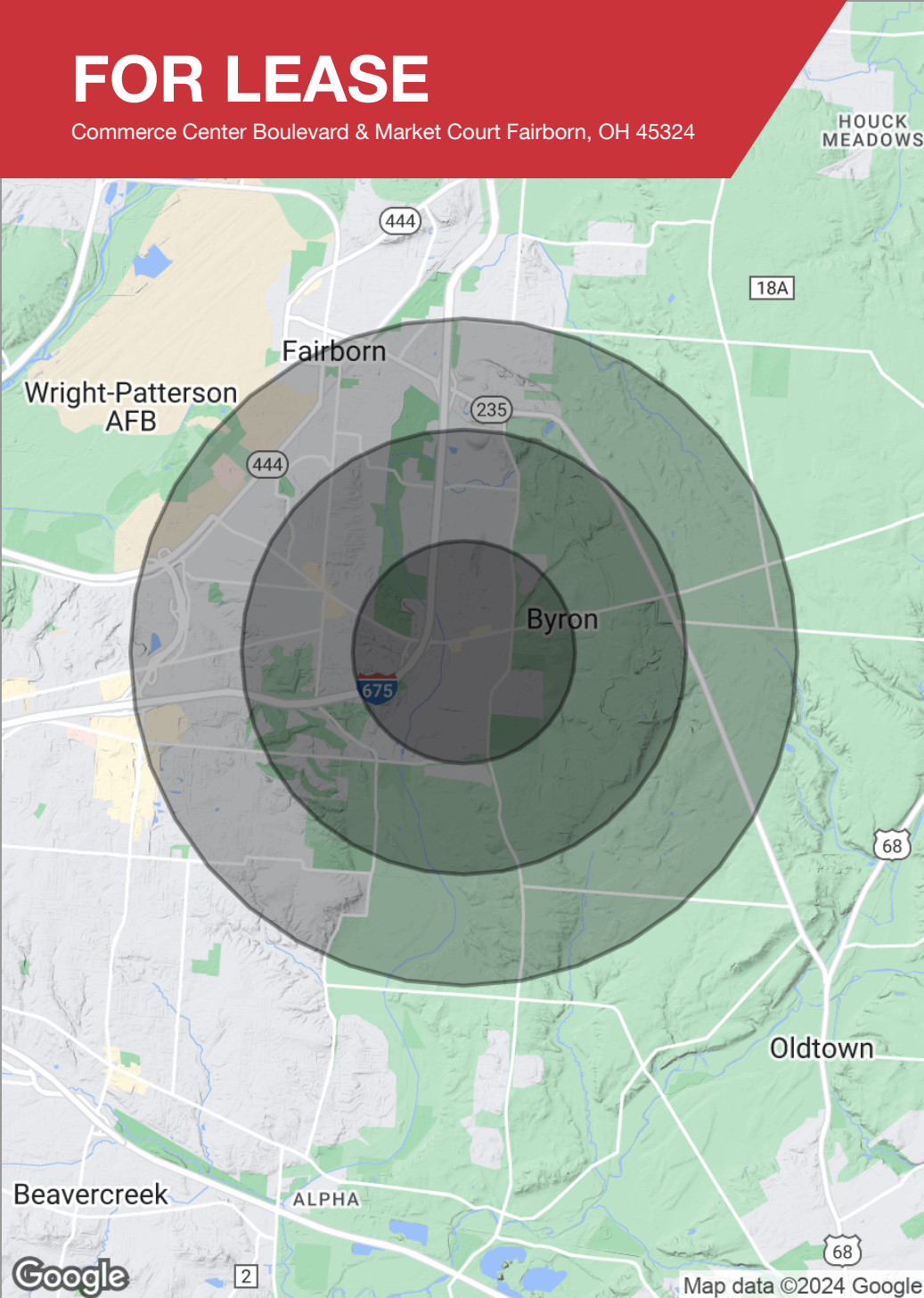
rlzavakos@bergman-group.com

**NABergman**



# FOR LEASE

Commerce Center Boulevard & Market Court Fairborn, OH 45324



## POPULATION

	1 MILE	2 MILES	3 MILES
Total population	3,579	16,518	34,376
Median age	39.1	38.5	37.1
Median age (male)	37.9	36.6	35.8
Median age (Female)	38.8	38.9	37.4

## HOUSEHOLDS & INCOME

	1 MILE	2 MILES	3 MILES
Total households	1,789	7,707	15,809
# of persons per HH	2.0	2.1	2.2
Average HH income	\$84,557	\$74,672	\$71,214
Average house value	\$171,200	\$153,308	\$140,125

*\* Demographic data derived from 2020 ACS - US Census*

No Warranty Or Representation, Express Or Implied, Is Made As To The Accuracy Of The Information Contained Herein, And The Same Is Submitted Subject To Errors, Omissions, Change Of Price, Rental Or Other Conditions, Prior Sale, Lease Or Financing, Or Withdrawal Without Notice, And Of Any Special Listing Conditions Imposed By Our Principals No Warranties Or Representations Are Made As To The Condition Of The Property Or Any Hazards Contained Therein Are Any To Be Implied.



**Robert Zavakos**

+1 937 603 3300

rlzavakos@bergman-group.com

**NABergman**