



Becraft Lane

Billings, Montana 59105

Property Highlights

- New retail opportunities
- .68 - 11.48 Acres lots available
- \$3.50 - \$5.50/SF
- Adjacent multifamily development planned

Property Description

New mixed use development in Lockwood. 4 retail pad sites, one retail anchor site and a multifamily development.

OFFERING SUMMARY

Sale Price:	\$3.50 - \$5.50/SF
Lot Size:	28.91 Acres

DEMOGRAPHICS	1 MILE	3 MILES	5 MILES
Total Households	890	5,008	14,275
Total Population	2,288	12,318	32,793
Average HH Income	\$78,809	\$70,529	\$70,363





OF LOTS 5 | TOTAL LOT SIZE 0.684 - 11.482 ACRES | TOTAL LOT PRICE N/A | BEST USE RETAIL PAD

STATUS	LOT #	SUB-TYPE	SIZE	PRICE	ZONING
Available	5	Retail	11.482 Acres	N/A	Pending
Available	4	Retail-Pad	0.684 Acres	N/A	Pending
Available	3	Retail-Pad	1.041 Acres	N/A	Pending
Available	2	Retail-Pad	1.048 Acres	N/A	Pending
Available	1	Retail-Pad	0.842 Acres	N/A	Pending

Matt Robertson, SIOR
 Broker/Principal | 406.294.6308
 mrobertson@naibusinessproperties.com

Haley Vannatta, CCIM
 Broker | 406.294.6317
 hvannatta@naibusinessproperties.com | MT #62446





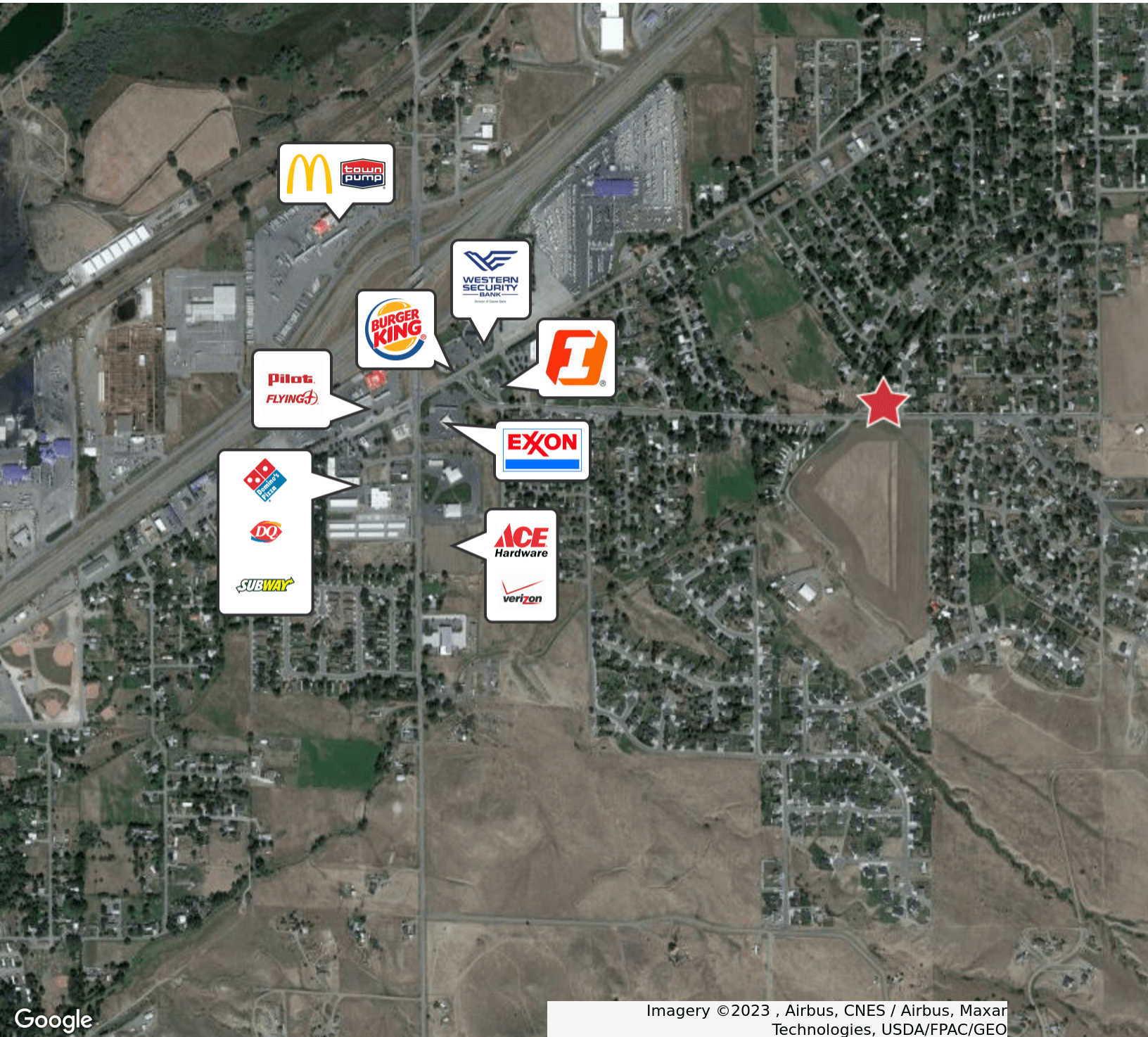
FOR SALE



LAND



28.91 AC



Google

Imagery ©2023 , Airbus, CNES / Airbus, Maxar Technologies, USDA/FPAC/GEO

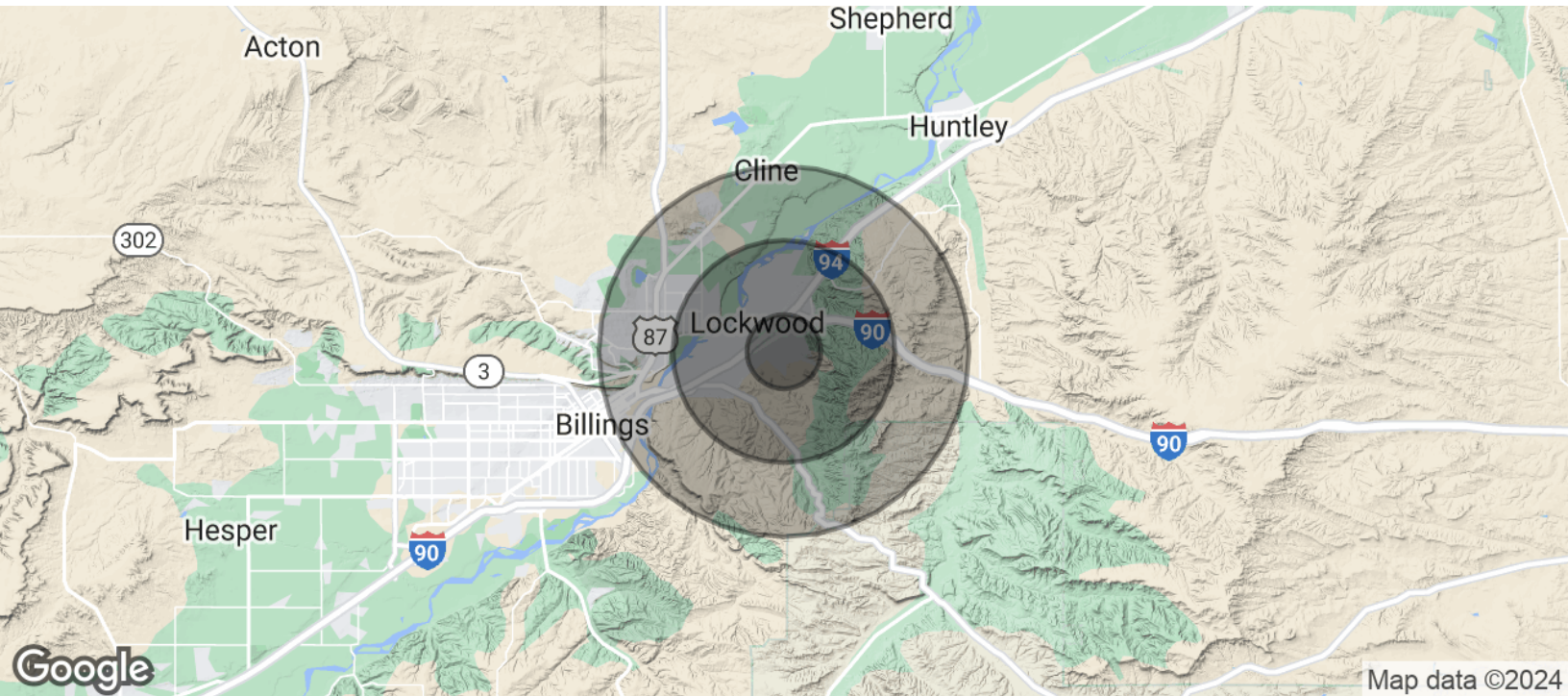


<https://www.naibusinessproperties.com>

Matt Robertson, SIOR
Broker/Principal | 406.294.6308
mrobertson@naibusinessproperties.com

Haley Vannatta, CCIM
Broker | 406.294.6317
hvannatta@naibusinessproperties.com | MT #62446

NO WARRANTY OR REPRESENTATION, EXPRESS OR IMPLIED, IS MADE AS TO THE ACCURACY OF THE INFORMATION CONTAINED HEREIN, AND THE SAME IS SUBMITTED SUBJECT TO ERRORS, OMISSIONS, CHANGE OF PRICE, RENTAL OR OTHER CONDITIONS, PRIOR SALE, LEASE OR FINANCING, OR WITHDRAWAL WITHOUT NOTICE, AND OF ANY SPECIAL LISTING CONDITIONS IMPOSED BY OUR PRINCIPALS NO WARRANTIES OR REPRESENTATIONS ARE MADE AS TO THE CONDITION OF THE PROPERTY OR ANY HAZARDS CONTAINED THEREIN ARE ANY TO BE IMPLIED.



POPULATION	1 MILE	3 MILES	5 MILES
Total Population	2,288	12,318	32,793
Average Age	38.4	36.2	36.8
Average Age (Male)	39.3	37.5	37.8
Average Age (Female)	36.7	35.4	36.5
HOUSEHOLDS & INCOME	1 MILE	3 MILES	5 MILES
Total Households	890	5,008	14,275
# of Persons per HH	2.6	2.5	2.3
Average HH Income	\$78,809	\$70,529	\$70,363
Average House Value	\$228,958	\$213,419	\$217,173

* Demographic data derived from 2020 ACS - US Census

